

# Single Row Terminal Blocks

## Kulka® 599/799 GP Series

300 Volts AC/DC (Class B)

599 Series only

150 Volts AC/DC (Class C)

599 and 799 Series

### Specifications:

- Base, Phenolic, 150°C (UL RTI)
- Open Back Design (Insulator Strip Required for Voltage Rating - see page 112)
- JJ (GDI-30F) Material Available
- Screws, #5-40 Binder Head, Phil-Slot, Brass
- Terminals, Plated Brass
- 1-30 Poles
- 3/8" Centers
- Wire Range With Wire Binding Screw #16 - #22 AWG – 15 Amps
- 799 Series (Riveted KT's) - shown at right, see page 104 for KT's
- UL Recognized File No. XCFR2.E47811
- CSA Certified File No. LR19766
- CE
- RoHS Compliant



599 GP 06 PSB



799 Series

### Hardware Options:

(Hardware options may affect ratings - consult Customer Service)

CATALOG #	PRODUCT DESCRIPTION	PAGE REFERENCE
KT28	Full Quick Connect (0° Flat)	See page 104
KT29	Full Quick Connect (45° Bend)	See page 104
KT30	Full Quick Connect (90° Bend)	See page 104
KT34	Half Quick Connect (0° Flat)	See page 104
KT35	Half Quick Connect (45° Bend)	See page 104
KT36	Half Quick Connect (90° Bend)	See page 104
3/4 ST	Half Solder	See page 106
Z	Lug over the Side (.312)	Consult C/S
J 600	Line to Line Jumper	See page 107
600 RJ(S)	Multiple Position Jumper	See page 107
2002	Stud	See page 109
2004	Feed Thru Solder	See page 109
2020	Solder Pin	See page 109
2021	Solder Pin (Slotted Screw)	See page 109

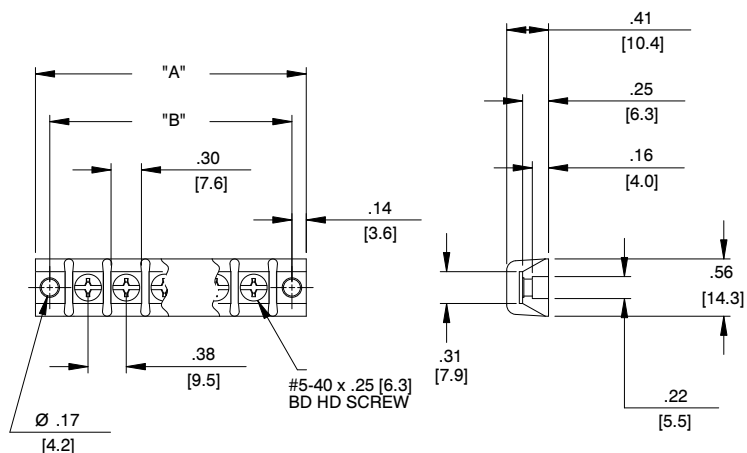
Quick Connects: .020" x .187"

See pages 104-115 for terminal block accessories

Kulka® Catalog #	# of poles	Dimensions	
		A	B
599 GP 01 PSB	1	1.03	0.75
599 GP 02 PSB	2	1.41	1.12
599 GP 03 PSB	3	1.78	1.50
599 GP 04 PSB	4	2.16	1.88
599 GP 05 PSB	5	2.53	2.25
599 GP 06 PSB	6	2.91	2.63
599 GP 07 PSB	7	3.28	3.00
599 GP 08 PSB	8	3.66	3.38
599 GP 09 PSB	9	4.03	3.75
599 GP 10 PSB	10	4.41	4.13
599 GP 11 PSB	11	4.78	4.50
599 GP 12 PSB	12	5.16	4.88
599 GP 13 PSB	13	5.53	5.25
599 GP 14 PSB	14	5.91	5.63
599 GP 15 PSB	15	6.28	6.00
599 GP 16 PSB	16	6.66	6.38
599 GP 17 PSB	17	7.03	6.75
599 GP 18 PSB	18	7.41	7.13
599 GP 19 PSB	19	7.78	7.50
599 GP 20 PSB	20	8.16	7.88
599 GP 21 PSB	21	8.53	8.25
599 GP 22 PSB	22	8.91	8.63
599 GP 23 PSB	23	9.28	9.00
599 GP 24 PSB	24	9.66	9.38
599 GP 25 PSB	25	10.03	9.75
599 GP 26 PSB	26	10.41	10.13
599 GP 27 PSB	27	10.78	10.50
599 GP 28 PSB	28	11.16	10.88
599 GP 29 PSB	29	11.53	11.25
599 GP 30 PSB	30	11.91	11.63

mm = dim X 25.4

For electronic drawings or 2D/3D CAD data, submit request at [www.marathonsp.com/drawings.html](http://www.marathonsp.com/drawings.html)



## X-ON Electronics

Largest Supplier of Electrical and Electronic Components

*Click to view similar products for [marathon manufacturer](#):*

Other Similar products are found below :

[104](#) [599-GP-2004-10](#) [600-2004-3-SP](#) [600-GP-20](#) [600TS-10](#) [601-GP-2102-02](#) [601-GP-3/4ST-12](#) [601-GPYSY-03](#) [601-JJ-06](#) [602-GPYSY-22](#)  
[603-2302-04](#) [603-JJ-04](#) [603-JJ-07](#) [604-JJ-06](#) [605-GP-03SLB](#) [605-JJ-02](#) [651-XPR-13](#) [670-3/4ST-9](#) [670A-GP-3000-18](#) [670A-GP-3000-25](#)  
[670A-GP-3000-27](#) [670A-GP-3/4ST-10](#) [670-GP-19](#) [CW205-01C](#) [671-RZ-25](#) [672-GPY-05](#) [672-RZ-24](#) [699-GP-2102-08](#) [699-GP-2120-12](#)  
[6F30A3S](#) [6H38-TSKK-C](#) [6R30A3SP](#) [F600A1B](#) [F600A3B](#) [F60A1B](#) [799-6-KT28](#) [799-7-KT28](#) [FPB33588](#) [8TBJ02](#) [R30A1B](#) [RF400A3B](#)  
[1321970](#) [1322970CH](#) [1320972](#) [1331955](#) [1332270](#) [1332554CH](#) [1333280CH](#) [1333575CH](#) [1353701](#)