

5HM11

M

DRAWING NUMBER

28

ISSUE

4

REVISIONS

A PR-9527

J M J
28 OCT 80

B CO59465

J A P
4 FEB 87

C CO71228

DAW
1 NOV 91

REPLACES

RELEASE NO. PR-9527

CHECK

CHECK

28 OCT 80

CES

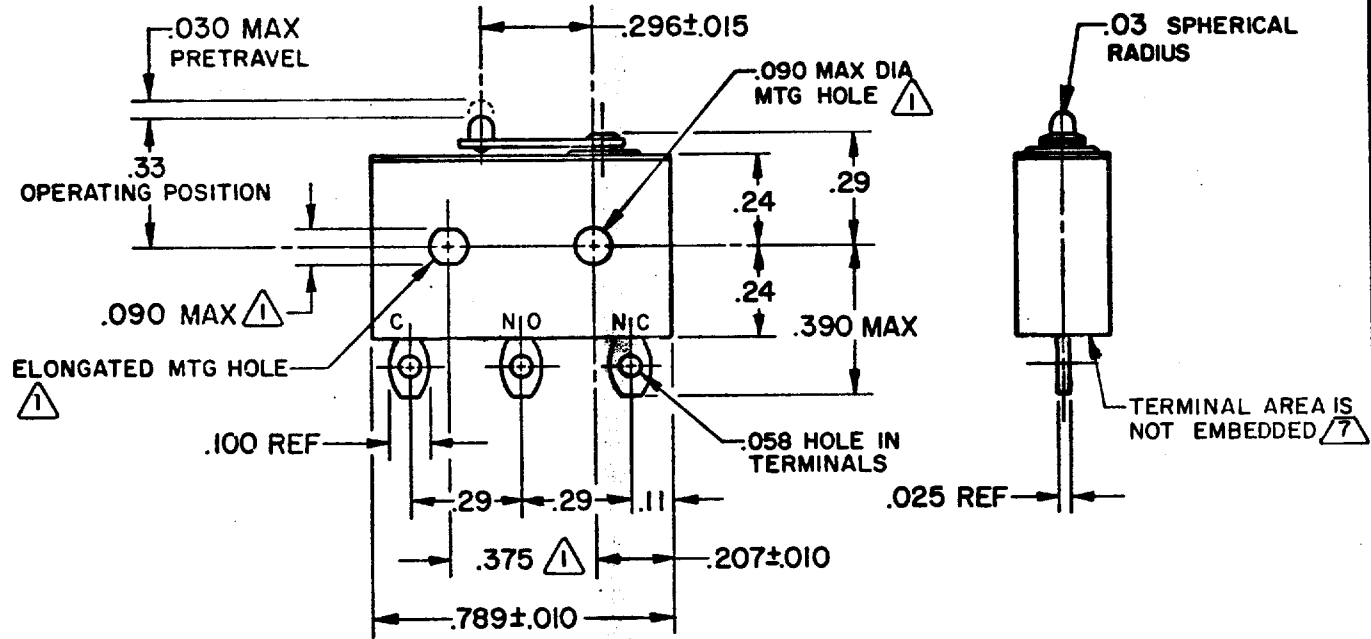
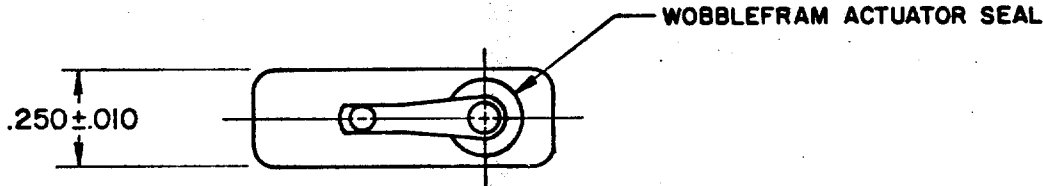
28 OCT 80

CHECK

28 OCT 80

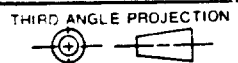
CHECK

JMJ



- NOTE -**
- 1 MOUNTING HOLES WILL ACCEPT PINS OR SCREWS OF .087 MAX DIA ON .375 ± .002 CENTERS
 - 2 - FOR USE IN TEMPERATURE RANGE -300°F TO +327°F
 - 3 - HERMETICALLY SEALED (METAL-TO-METAL, GLASS-TO-METAL)
 - 4 - ALL EXPOSED PARTS ARE OF CORROSION RESISTANT MATERIALS
 - 5 - TERMINALS ARE TINNED FOR SOLDERING
 - 6 - DO NOT APPLY MORE THAN 1 1/2 INCH-LBS OF TORQUE WHEN TIGHTENING MOUNTING SCREWS
 - 7 POTTING OF TERMINAL AREA IS RECOMMENDED

THIS DRAWING COVERS A PROPRIETARY ITEM AND IS THE PROPERTY OF MICRO SWITCH, A DIVISION OF HONEYWELL. THIS DRAWING IS NOT TO BE COPIED OR USED WITHOUT THE APPROVAL OF MICRO SWITCH.



| CHARACTERISTICS | ELECTRICAL DATA | | | SCALE 2 TO 1 | |
|--|-----------------------------|-------------------|-------------------|---|--|
| | CONTACT ARRANGEMENT SPDT | | | DO NOT SCALE PRINT | |
| OPERATING FORCE ----- 7 OZ MAX | LINE VOLTAGE | INDUCTIVE LOAD | RESISTIVE LOAD | TOLERANCES | |
| RELEASE FORCE ----- 1 OZ MIN | | | | APPLY TO DESIGN LIMITS. CONVERSIONS ARE ONLY FOR REFERENCE. UNLESS NOTED TOLERANCES ARE ± | |
| DIFFERENTIAL TRAVEL. --- .006 MAX OVERTRAVEL ----- .003 MIN | 28 VDC | 2 AMP | 4 AMP | DIM. mm | TOL. mm/± |
| | 115 VAC (400 CYCLE) | 2 1/2 AMP | 2 1/2 AMP | DIM. in | TOL. mm/in |
| | | | | NO PLACES X ONE PLACE X,X TWO PLACES X,XX THREE PLACES X,XXX ANGLES | 1/04 0.4/018 0.15/008 X X X,XX X,XXX 0.01/03 0.38/015 0.13/005 |
| | | | | DESIGN UNITS <input type="checkbox"/> METRIC | US CUSTOMARY <input checked="" type="checkbox"/> |
| | | | | WEIGHT .014 LB MAX | |

FD-52848-A

X-ON Electronics

Largest Supplier of Electrical and Electronic Components

Click to view similar products for [Basic / Snap Action Switches](#) category:

Click to view products by [Honeywell](#) manufacturer:

Other Similar products are found below :

[83228001](#) [01.098.1358.1](#) [602EN1-6B](#) [602EN532](#) [602EN535-RB](#) [602HE5-RB1](#) [604HE162](#) [604HE223-6B](#) [624HE17-RB](#) [6HM89](#) [6PA78-JM](#)
[6SE1](#) [6SX1-H58](#) [70500840](#) [MBD5B1](#) [MBH2731](#) [73-316-0012](#) [79211759](#) [79211923](#) [79218589](#) [7AS12](#) [ML-1155](#) [ML-1376](#) [831010C3.0](#)
[831060C3.TL](#) [831090C2.EL](#) [83131904](#) [84212012](#) [8AS239](#) [8HM73-3](#) [903VB1-PG](#) [914CE1-6G](#) [PL-100](#) [11SM1077-H4](#) [11SM1077-H58](#)
[11SM1-TN107](#) [11SM405](#) [11SM703-T](#) [11SM8423-H2](#) [11SX37-T](#) [11SX48-H58](#) [11SX55-H58](#) [11SM2442-T](#) [11SM76-T](#) [11SM77-H58](#)
[11SM77-T](#) [11SM863-T](#) [11SM866](#) [11SX47-H58](#) [A7CN-1M-1-LEFT](#)