

**LINKSYS™**

## User Guide

USB Ethernet Adapter

Model: USB3GIG

# About This Guide

---

---

## Online Resources

Resource	Website
Linksys	<a href="http://www.linksys.com">www.linksys.com</a>
Linksys International	<a href="http://www.linksys.com/international">www.linksys.com/international</a>
Glossary	<a href="http://www.linksys.com/glossary">www.linksys.com/glossary</a>
Network Security	<a href="http://www.linksys.com/security">www.linksys.com/security</a>

## Copyright and Trademarks

Linksys, Belkin and the Linksys Logo are registered trademarks or trademarks of Belkin International, Inc. and/or its affiliates in the U.S. and certain other countries. Copyright ©2014 Belkin International, Inc. All rights reserved. Other brands and product names are trademarks or registered trademarks of their respective holders.

# Table of Contents

---

<b>CHAPTER 1 QUICK START GUIDE. . . . .</b>	<b>1</b>
LEDs. . . . .	1
Ports. . . . .	1
Installing the Adapter. . . . .	1
<b>CHAPTER 2 DRIVER INSTALLATION . . . . .</b>	<b>2</b>
Driver Installation for Windows XP. . . . .	2
Driver Installation for Windows Vista . . . . .	2
Driver Installation for Windows 8 and Windows 8.1 . . . . .	2
Driver Installation for Mac OS X . . . . .	3
<b>Appendix A: Troubleshooting . . . . .</b>	<b>5</b>
<b>Appendix B: Specifications . . . . .</b>	<b>6</b>

# CHAPTER 1 Product Overview

Thank you for choosing the Linksys USB Ethernet Adapter. This adapter lets you easily connect any device with a USB port – such as your computer, game console, or DVR – to a wired network. Small and light, yet rugged enough for travel, the adapter keeps you connected almost everywhere you go.

## LEDs



Location of  
Link/Activity LED

**Link/Activity (Blue)** The Link/Activity LED is solid blue when there is an active link over the Ethernet interface. The LED flashes blue when data is being transferred over the Ethernet interface.

## Ports



**USB** This is a USB 3.0 Type A connector that you connect to an available USB port on your computer or other device. Connecting the adapter to a USB 3.0 port will yield best performance.



**Ethernet** This port connects the adapter to your network's router or switch.

## Installing the Adapter

1. Remove the caps from the adapter to expose the USB and Ethernet ports.
2. Insert the adapter's USB connector into an available USB port on your computer or device.

### NOTE:

For maximum performance, connect the adapter directly to a USB 3.0 port on your computer. If you are connecting to a USB hub, make sure it operates at USB 3.0 speed.

3. Insert one end of an Ethernet network cable into the adapter's RJ-45 port.
4. Insert the other end of the Ethernet network cable into the Ethernet port on your network's router or switch.

# Chapter 2: Driver Installation

After physically connecting the adapter to your computer's USB port or hub, follow these instructions to install the hardware device driver. The installation procedures for the hardware device driver vary depending on your computer's operating system, so make sure to follow the instructions for your operating system. The instructions also may vary slightly depending on your current operating system's configuration. If at any time during the installation you encounter problems, refer to **Appendix A: Troubleshooting, page 5**.

**NOTE:**

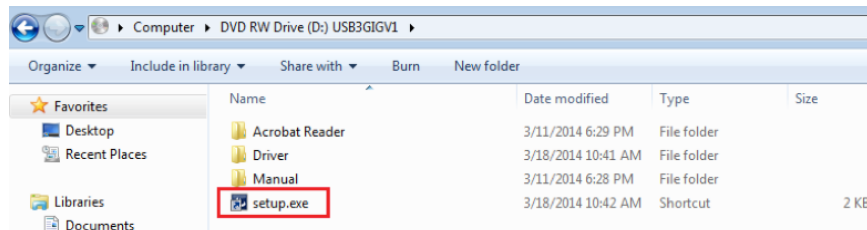
Throughout this user guide, it is assumed that "D" is the letter of your CD-ROM drive.

## Driver Installation for Windows XP/Vista/Win 7/Win 8

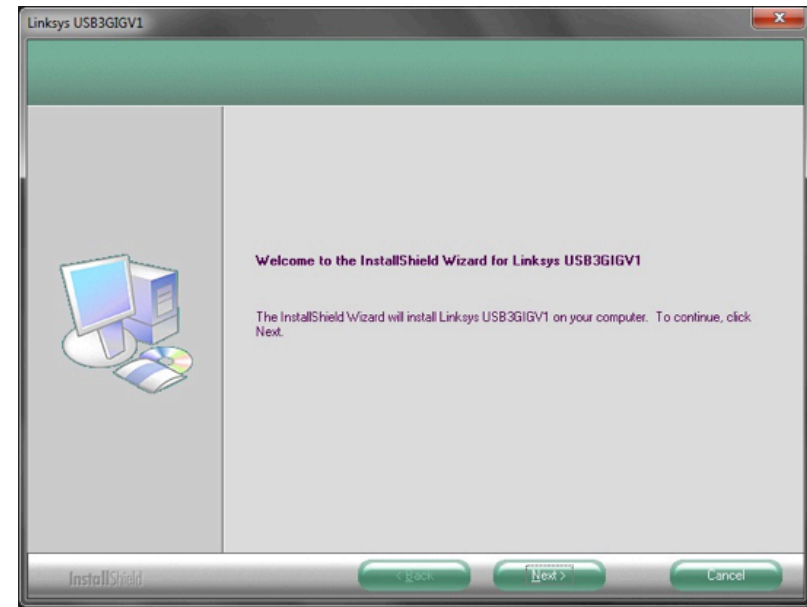
**NOTE:**

Do not click Cancel at any time during the installation process. Doing so will prevent your driver from being properly installed on your computer.

1. If you have not yet done so, start your computer.
2. Insert the Drivers & Documentation CD into your CD-ROM drive
3. Open up the CD's folder and double-click **Setup.exe**.

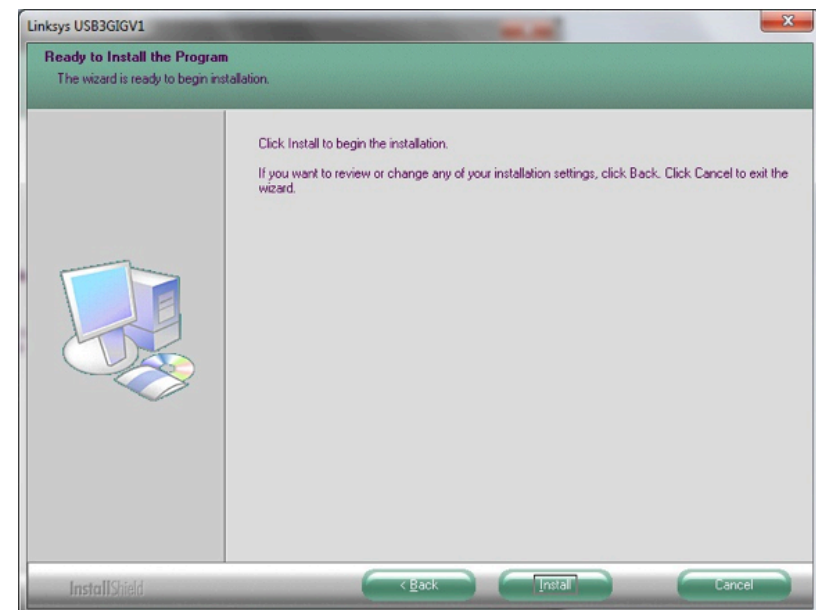


4. Select **Next** to advance to the next screen

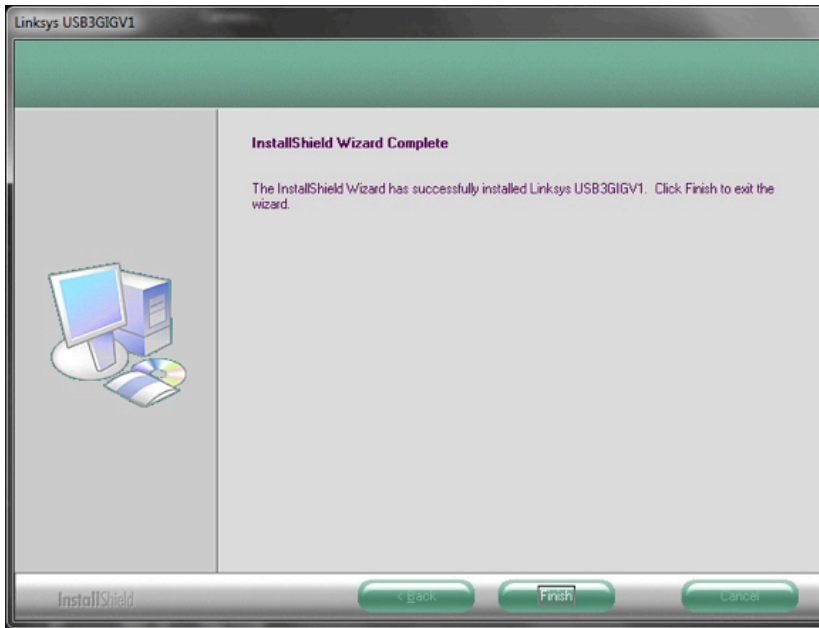


InstallShield Wizard

5. Select **Install**



6. When the driver is finished installing, click **Finish**



**That's it. You're done with installation of the USB Ethernet Adapter.**

**For more information about networking under Microsoft Windows, refer to your Microsoft Windows documentation.**

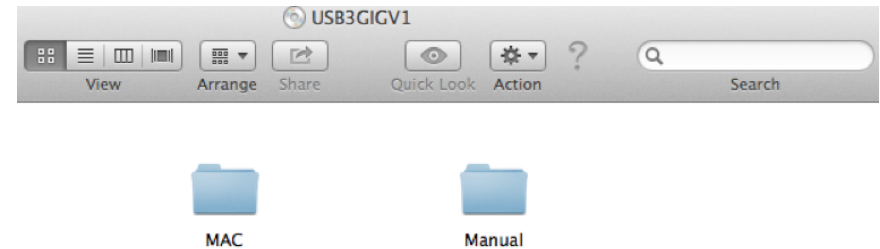
## Driver Installation for Mac OS X

**NOTE:**

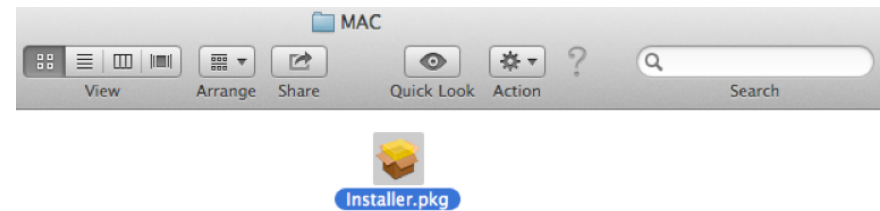
Do not click **Cancel** at any time during the installation process. Doing so will prevent your driver from being properly installed on your computer.

1. If you have not yet done so, start your computer.
2. Insert the Drivers & Documentation CD into your CD-ROM drive

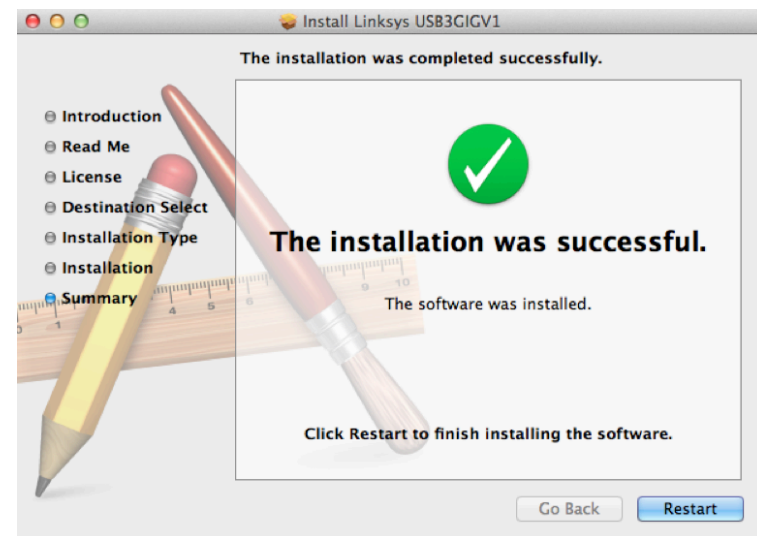
3. Open up the CD's folder followed by the **MAC** folder



4. Open the **Installer** file



5. Follow the steps in the Installer application, when the installation is complete you will be asked to restart your Mac. Click the **Restart** button to finish setup.



**When your Mac restarts you're done with installation of the USB Ethernet Adapter.**

**For more information about networking under OS X, refer to your Mac OS X documentation.**

# Appendix A: Troubleshooting

---

**Your computer does not recognize the adapter.**

Make sure that the adapter is properly inserted into the USB slot.

**The adapter does not work properly.**

Remove the adapter, and reinsert it into the computer's USB slot.



**WEB:** If your questions are not addressed here, refer to the Linksys website, [www.linksys.com](http://www.linksys.com)



# Appendix B: Specifications

**Model**

USB3GIG USB Ethernet Adapter

**Standards**

USB 1.0, USB 1.1, USB 2.0, USB 3.0

IEEE 802.3, IEEE 802.3u

**Ports**

One USB Type-A Male Connector, One RJ-45 Gigabit Port

**Cabling Type**

Cat 5 Ethernet Cable

**LEDs**

Link/Activity

## Environmental

**Dimensions\***

7.96" x 1.00" x 0.69"

(202.3 x 25.35 x 17.65 mm)

**Weight\*\***

0.8 oz (23 g)

**Power**

3.3 V low power consumption

**Certification**

FCC Class B, CE Class B

**Operating Temp.**

32 to 158°F (0 to 70°C)

**Storage Temp.**

32 to 158°F (0 to 70°C)

**Operating Humidity**

10 to 90% Noncondensing

**Storage Humidity**

10 to 90% Noncondensing

\* With cap removed and cable fully extended

\*\* With cap attached

Visit [linksys.com/support](https://linksys.com/support) for award-winning technical support

© 2014 Belkin International, Inc. and/or its affiliates. All rights reserved. BELKIN, LINKSYS and many product names and logos are trademarks of the Belkin group of companies. Third-party trademarks mentioned are the property of their respective owners.

LNKPG-00103 Rev. A01

## **X-ON Electronics**

Largest Supplier of Electrical and Electronic Components

*Click to view similar products for [linksys](#) manufacturer:*

Other Similar products are found below :

[AE6000](#) [LGS105](#) [USB3GIG](#)