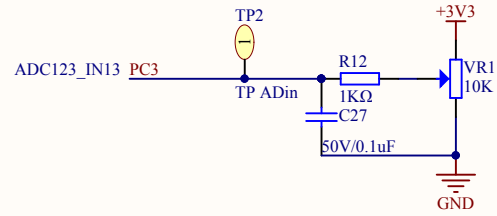
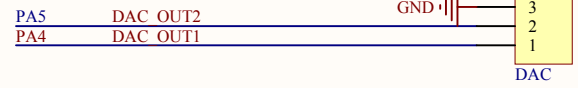


ADC



DAC

PA5 is an AFIO, please refer to SPI Schematic for right config



Company Name: GigaDevice

File Name: AD_DA

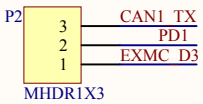
Revision: 1.0

Data: 2013-8-20

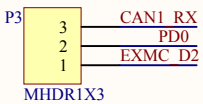
Author: XuFei

CAN

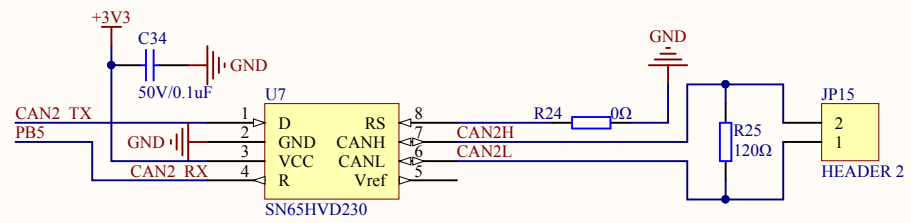
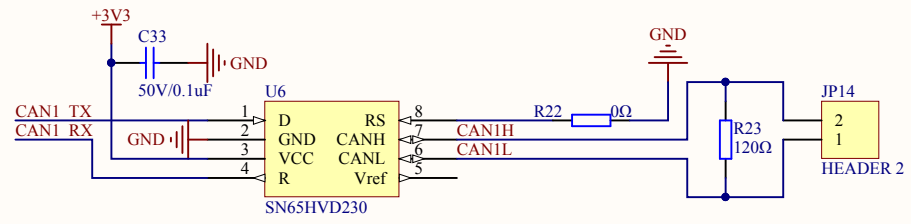
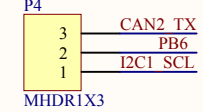
Short P2(1,2) for EXMC function
 Short P2(2,3) for CAN1 function



Short P3(1,2) for EXMC function
 Short P3(2,3) for CAN1 function



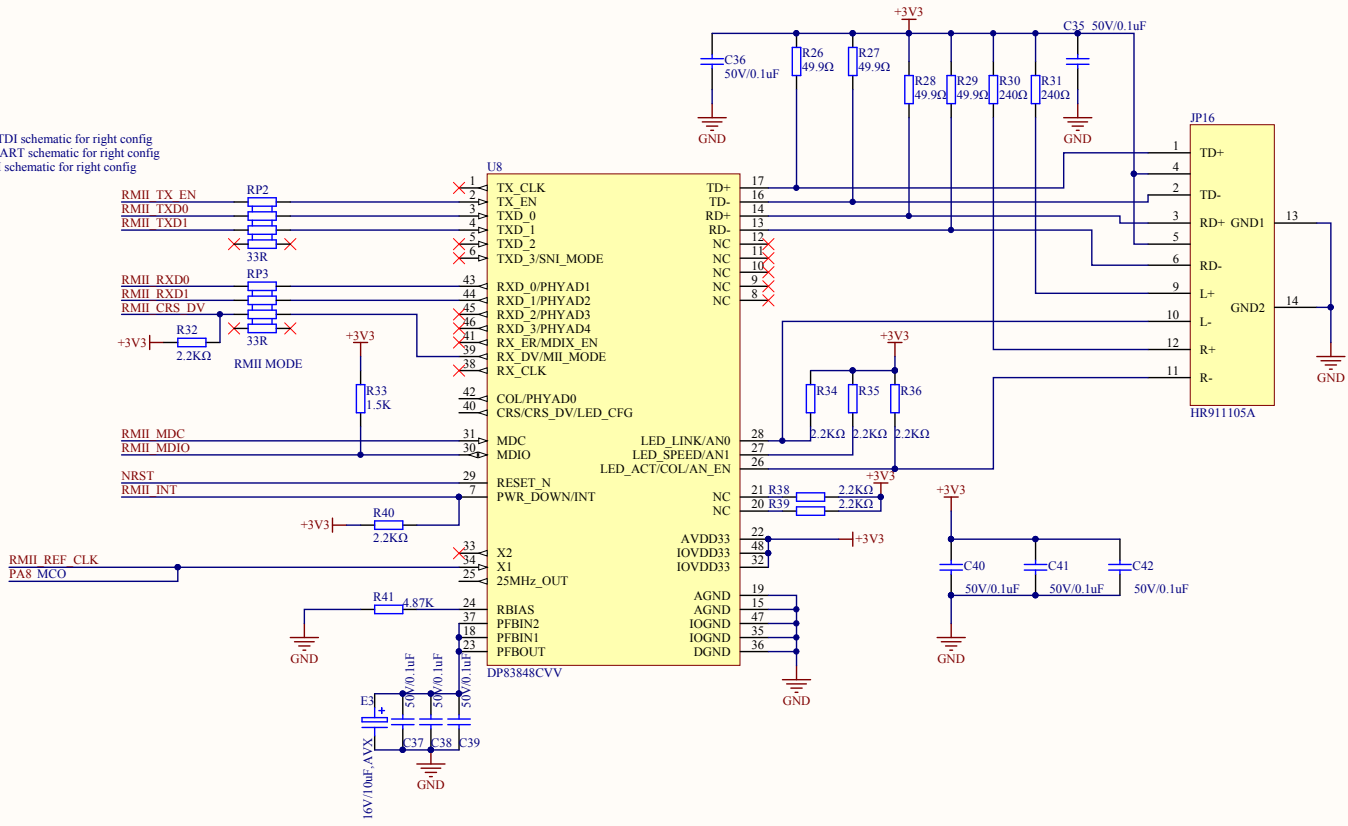
Short P4(1,2) for I2C1 function
 Short P4(2,3) for CAN2 function



Company Name: GigaDevice		
File Name: CAN		
Revision: 1.0	Data: 2013-7-24	Author: XuFei

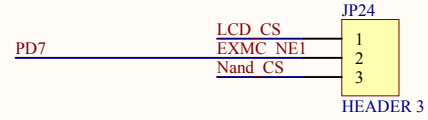
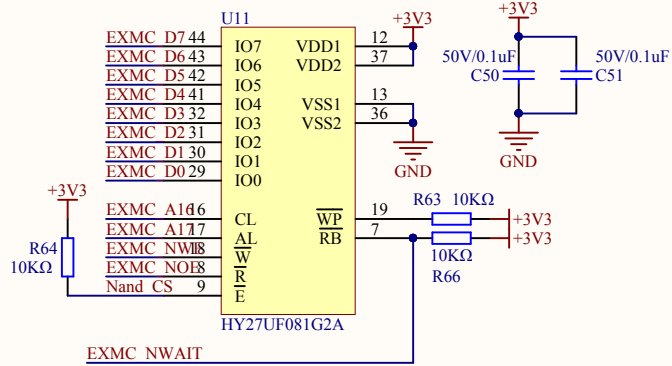
PB11 is an AFIO, refer to LTD1 schematic for right config
 PA2 is an AFIO, refer to USART schematic for right config
 PA7 is an AFIO, refer to SPI schematic for right config

- PB11 RMII TX_EN
- PB12 RMII TXD0
- PB13 RMII TXD1
- PC4 RMII RXD0
- PC5 RMII RXD1
- PA7 RMII CRS_DV
- PC1 RMII MDC
- PA2 RMII MDIO
- PB0 RMII INT
- PA1 RMII REF_CLK



Company Name: GigaDevice		
File Name: Ethernet		
Revision: 1.0	Date: 2013-8-21	Author: Xufei

Nand Flash



PD0,PD1 are AFIOs, please refer to CAN schematic for right config

PD14	EXMC D0
PD15	EXMC D1
PD0	EXMC D2
PD1	EXMC D3
PE7	EXMC D4
PE8	EXMC D5
PE9	EXMC D6
PE10	EXMC D7

PD11	EXMC A16
PD12	EXMC A17
PD4	EXMC NOE
PD5	EXMC NWE
PD6	EXMC NWAIT

Company Name: GigaDevice

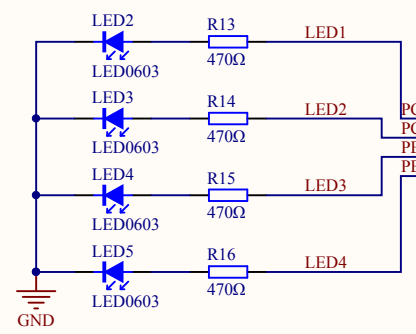
File Name: EXMC

Revision: 1.0

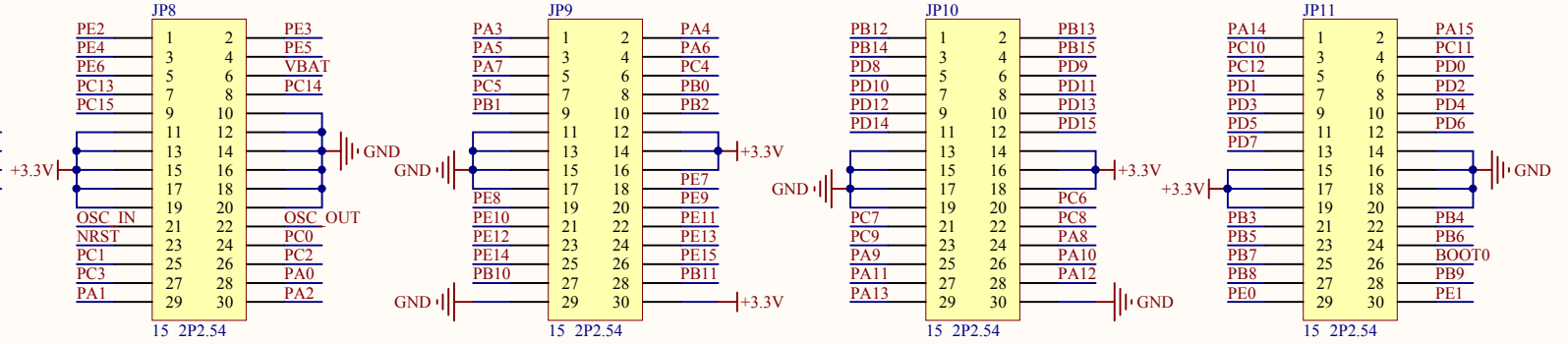
Data: 2013-8-20

Author: XuFei

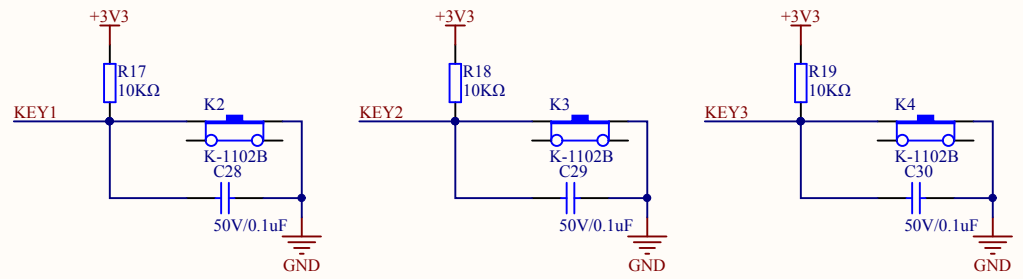
LED



Extension Pin



KEY



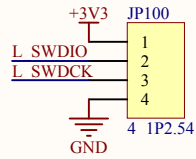
- PA0 KEY1
- PC13 KEY2
- PB14 KEY3

Company Name: GigaDevice

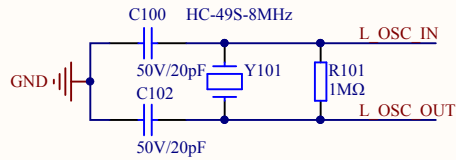
File Name: Extension

Revision: 1.0	Data: 2013-8-20	Author: XuFei
---------------	-----------------	---------------

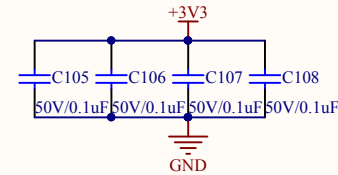
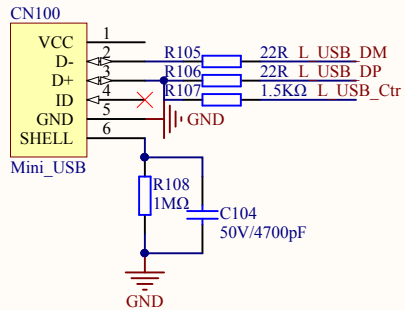
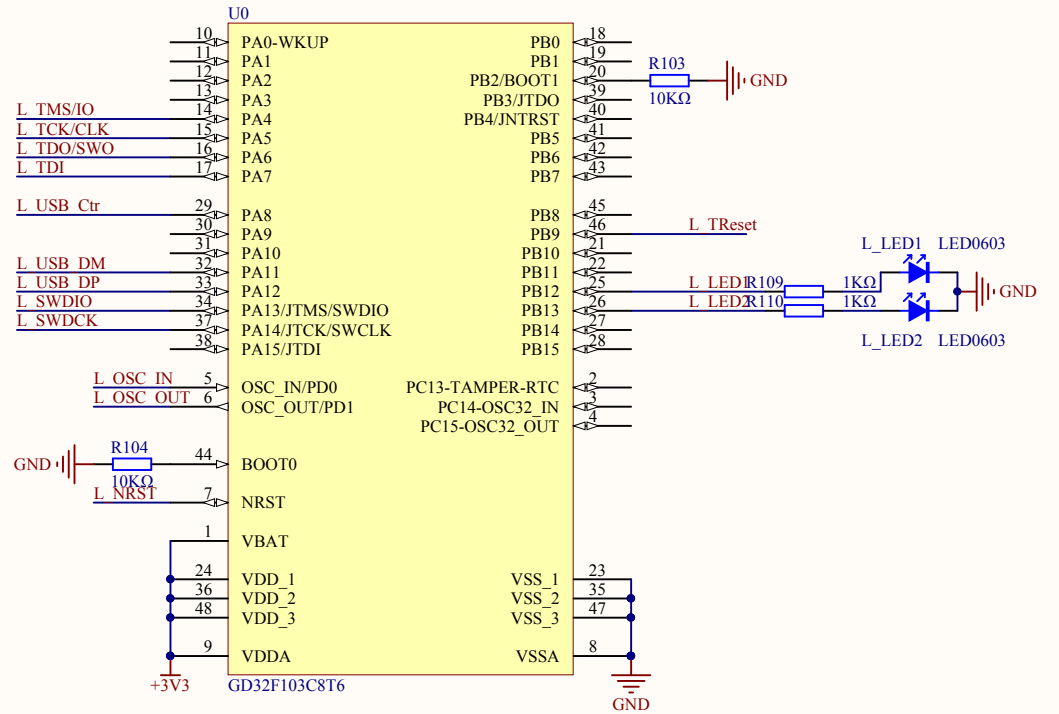
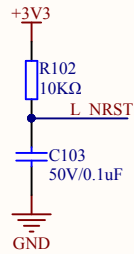
MCU SWD



HSE



Reset



Company Name: GigaDevice

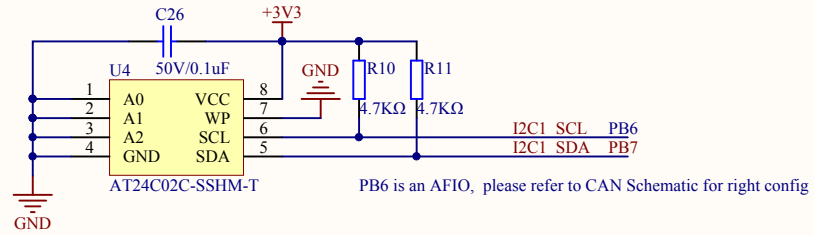
File Name: GDLink

Revision: 1.0

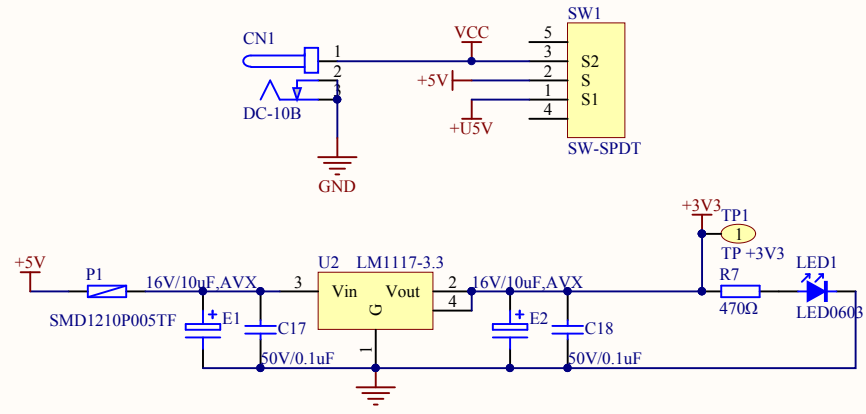
Data: 2015-01-09

Author: XuFei

I2C



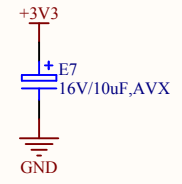
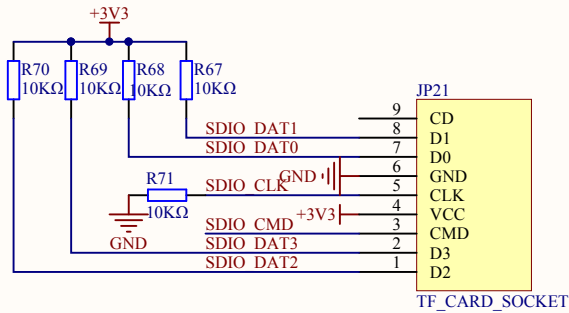
Company Name: GigaDevice		
File Name: I2C_SMBus		
Revision: 1.0	Data: 2013-8-20	Author: XuFei



Company Name: GigaDevice		
File Name: Power		
Revision: 1.0	Data: 2013-8-20	Author: XuFei

SDIO

PD2	SDIO_CMD
PC12	SDIO_CLK
PC8	SDIO_DAT0
PC9	SDIO_DAT1
PC10	SDIO_DAT2
PC11	SDIO_DAT3



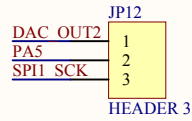
Company Name: GigaDevice		
File Name: SDIO		
Revision: 1.1	Data: 2015-2	Author: Xufei

Standard & Quad SPI Flash

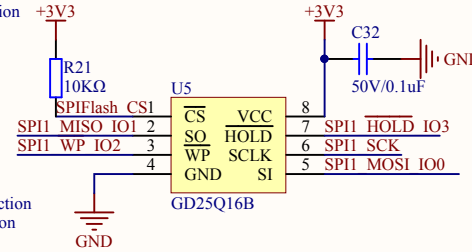
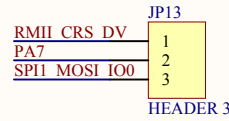
PA6 is AFIO, please refer to LTDC schematic for correct config

PA6 SPI1 MISO IO1
PE3 SPIFlash CS

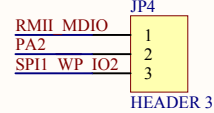
Short JP12(1,2) for DAC function
Short JP12(2,3) for SPI1 function



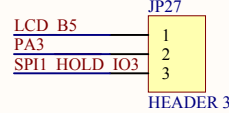
Short JP13(1,2) for Ethernet function
Short JP13(2,3) for SPI1 function



Short JP4(1,2) for Ethernet function
Short JP4(2,3) for SPI1 function



Short JP27(1,2) for LTDC function
Short JP27(2,3) for SPI1 function



Company Name: GigaDevice

File Name: SPI

Revision: 1.0

Data: 2013-8-20

Author: XuFei

PA11,PA12 are AFIOs, please refer to USB_OTG schematic for correct config

PA3 is AFIO, please refer to SPI schematic for correct config

PC6	HSYNC
PA4	VSYNC
PE14	PCLK
PE13	DE
PE15	D15 R7
PB1	D14 R6
PA12	LCD R5 D13 R5
PA11	LCD R4 D12 R4
PB0	D11 R3
PD3	D10 G7
PC7	D09 G6
PB11	LCD G5 D08 G5
PB10	D07 G4
PE11	D06 G3
PA6	LCD G2 D05 G2
PB9	D04 B7
PB8	D03 B6
PA3	LCD B5 D02 B5
PE12	D01 B4
PD10	D00 B3

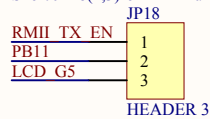
PD7	LCD CS
PE2	LCD RS
PA5	SPI1 SCK LCD SCK
PA7	SPI1 MOSI LCD MOSI
PE4	T CS
PE6	T SCK
PD8	T MOSI
PD9	T MISO
PE5	T IQR

LCD

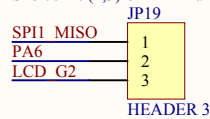
LCD CS	34	33	LCD RS
LCD SCK	32	31	RD
NRST	30	29	D00
D01	28	27	D02
D03	26	25	D04
D05	24	23	D06
D07	22	21	D08
D09	20	19	D10
D11	18	17	D12
D13	16	15	D14
D15	14	13	LCD MOSI
HSYNC	12	11	VSYNC
PCLK	10	9	DE
T CS	8	7	T SCK
T MOSI	6	5	T MISO
T IQR	4	3	BL CTR
	2	1	

17x2_2.54 +3V3

Short JP18(1,2)for Ethernet function
Short JP18(2,3)for TLDI function



Short JP19(1,2)for SPI function
Short JP19(2,3)for TLDI function



Company Name: GigaDevice

File Name: TLDI

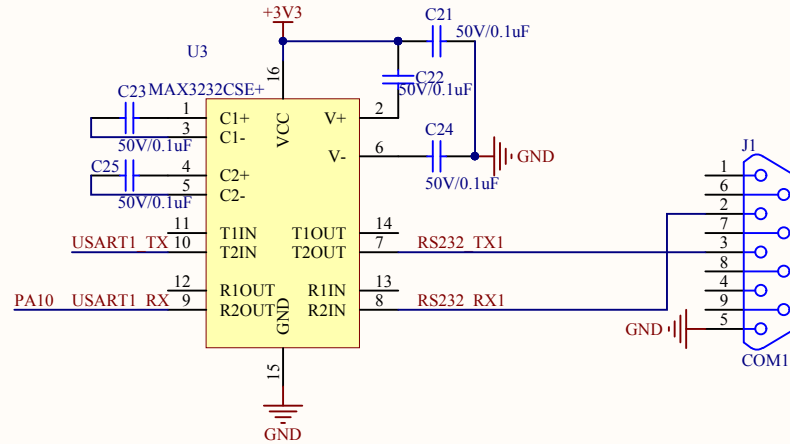
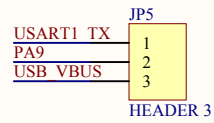
Revision: 1.1

Data: 2015-08

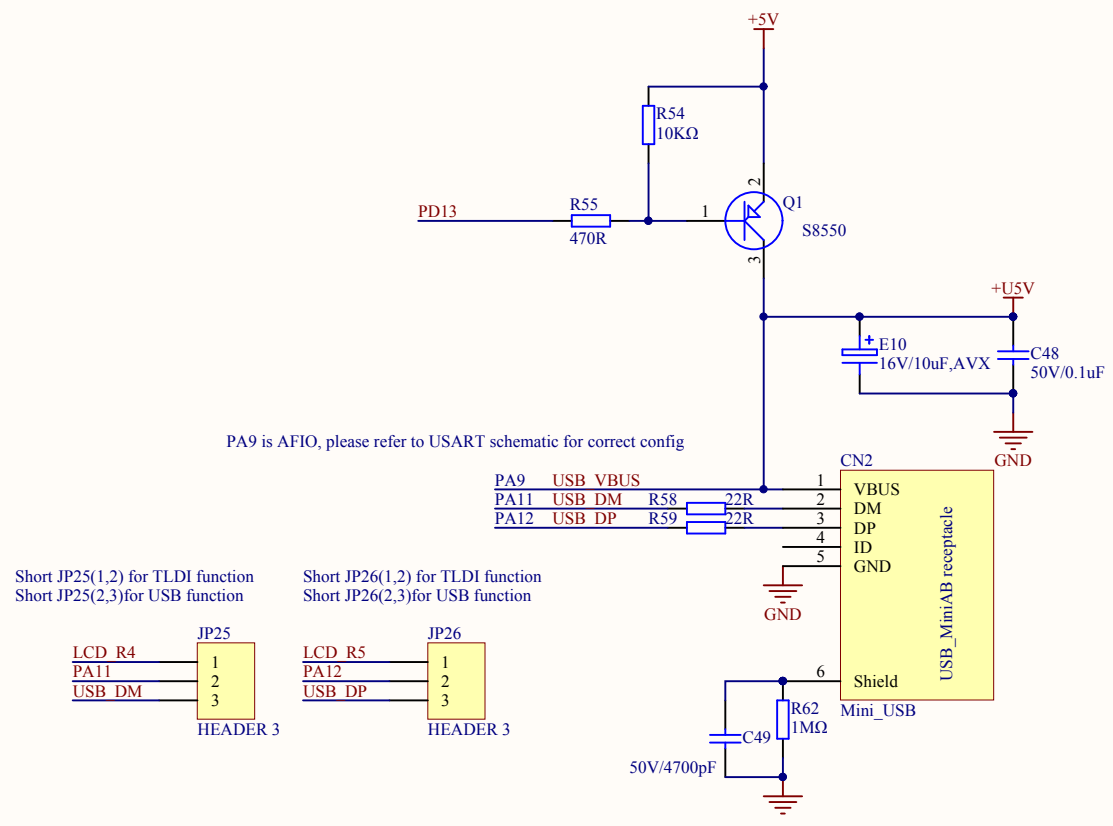
Author: XuFei

USART1

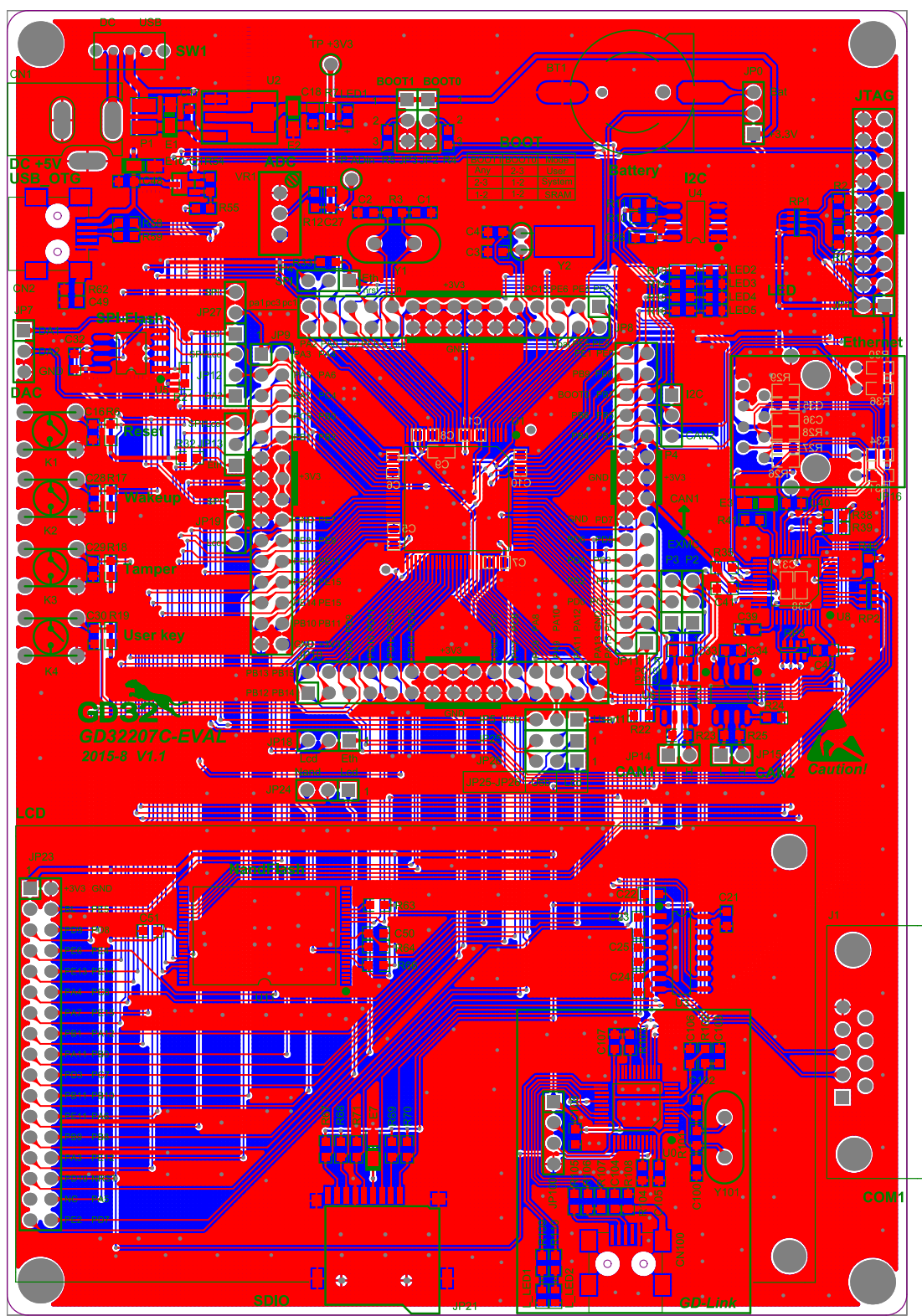
Short JP5(1,2)for USART1 function
 Short JP5(2,3)for USB Device function



Company Name: GigaDevice		
File Name: USART		
Revision: 1.0	Data: 2015-07	Author: XuFei



Company Name: GigaDevice		
File Name: USB_OTG		
Revision: 1.1	Data: 2013.9.10	Author: Xufei



GD32207C-EVAL
2015-8 V1.1

Caution!

GD-Link

X-ON Electronics

Largest Supplier of Electrical and Electronic Components

Click to view similar products for [Development Boards & Kits - Other Processors](#) category:

Click to view products by [Gigadevice](#) manufacturer:

Other Similar products are found below :

[KIT_AURIX_TC233LP_TRB](#) [EVB-MEC1418MECC](#) [SPC56XVTOP-M](#) [ADZS-BF506F-EZLITE](#) [ADZS-SADA2-BRD](#) [20-101-1252](#)
[T1023RDB-PC](#) [20-101-1267](#) [T1042D4RDB-PA](#) [ML610Q174](#) [REFERENCE BOARD](#) [MPC574XG-MB](#) [BSC9132QDS](#) [C29XPCIE-RDB](#)
[KIT_TC1793_SK](#) [CC-ACC-18M433](#) [P1010RDB-PB](#) [P1020RDB-PD](#) [P2020COME-DS-PB](#) [STM8S/32-D/RAIS](#) [T4240RDB-PB](#) [TRK-USB-](#)
[MPC5604B](#) [TWR-56F8200](#) [CY3674](#) [SPC58XXADPT176S](#) [MAX1464EVKIT](#) [TRK-MPC5606B](#) [RTE510Y470TGB00000R](#) [STM8128-](#)
[MCKIT](#) [MAXQ622-KIT#](#) [YRPBRL78G11](#) [SPC58EEMU](#) [QB-R5F10JGC-TB](#) [YQB-R5F11BLE-TB](#) [SPC564A70AVB176](#)
[RTE5117GC0TGB00000R](#) [QB-R5F100LE-TB](#) [YR0K50571MS000BE](#) [YQB-R5F1057A-TB](#) [QB-R5F104PJ-TB](#) [CC-ACC-ETHMX](#)
[LFM34INTPQA](#) [SPC563M64A176S](#) [Y-BLDC-SK-RL78F14](#) [P1021RDB-PC](#) [SPC58XCADPT176S](#) [RTE510MPG0TGB00000R](#)
[YRPBRX71M](#) [LFMAJ04PLT](#) [KITAURIXTC234LPSTRBTOBO1](#) [OV-7604-C7-EVALUATION-BOARD](#)