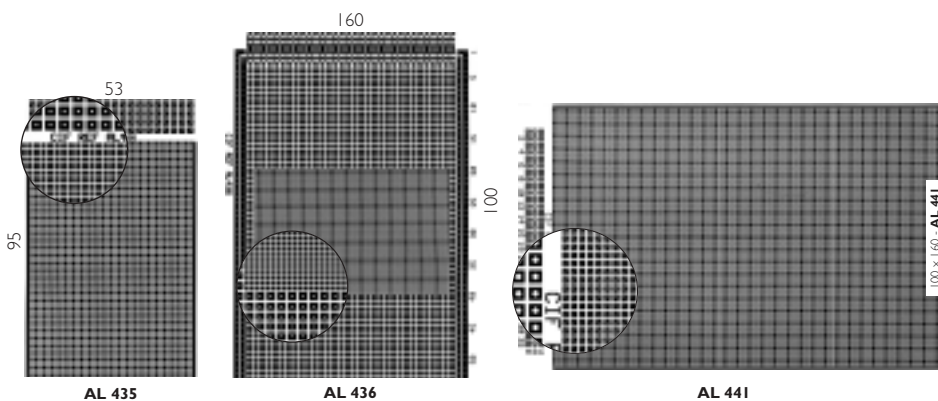


## BOARDS FOR SMT-COMPONENTS

Double-sided epoxy. Plated holes – mixed assembly 2.54 and 1.27 mm.



### Epoxy thickness 0,70 mm.

39 x 59 SMD 1 mm<sup>2</sup> pads drilled at 0.35 mm. 1,27 mm pitch. 6 rows at .54 mm pitch at the edge. Holes fully plated.

Size in mm	Reference
53 x 95	AL 435

### Epoxy thickness 1,5mm.

40 x 60 SMD 1 mm<sup>2</sup> pads drilled at 0.35 mm. 1,27 mm pitch. Padded on both sides at 2,54 mm pitch with 32 mm<sup>2</sup> pads drilled 1,0 mm. DIN 41612 C connector. Holes fully plated.

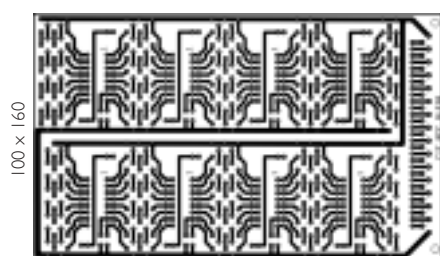
Size in mm	Reference
100 x 160	AL 436

### Epoxy thickness 1,6mm.

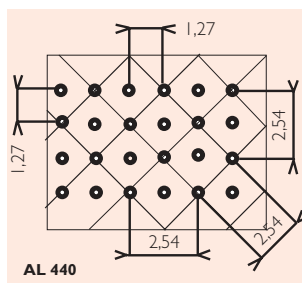
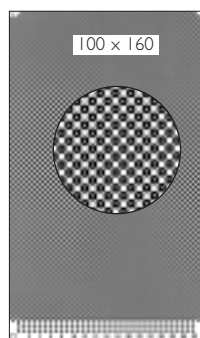
Fully SMD padded with DIN 41612 C connector. Drilled 0,4 mm. Both sides with 8475 plated holes.

Size in mm	Reference
100 x 160	AL 441

## DOUBLE SIDED FULLY PLATED



AL 438



AL 440

### Double sided

100 x 160 mm plated hole to take 8 pre-wired 16 pin DIL boxes. 31 contact connector. Drilling Ø 0,8 mm.

Size in mm	Reference
100 x 160	AL 438

### Double sided.

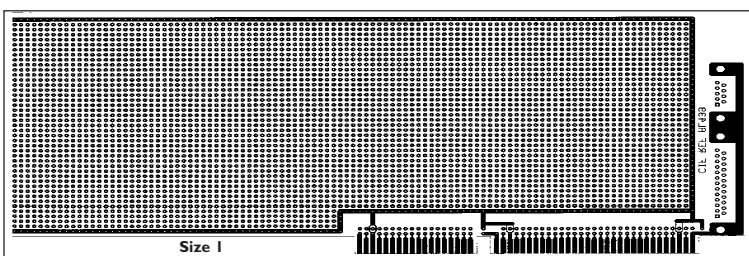
100 x 160 mm plated hole. High density for fitting PLCC, QFP, PGA, etc. adapters. Epoxy 16/10th Drilling Ø 0,8 mm, Pad Ø 1,4 mm. Resist varnish, 3 x 32 connector.

Size in mm	Reference
100 x 160	AL 440

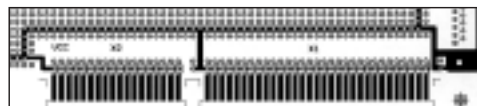
### Extension card PC-AT

Size 332 x 123mm (memory, communication, acquisition, etc.) 31 connector + 18 gold-plated + Sub-D's 9 pin + sub-D's 25 pin.

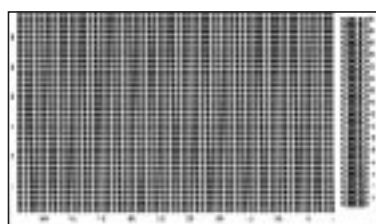
Size in mm	Reference
332 x 123	AL 439



Size 1



Size 2



Size 1



Size 2

### High Frequency – Shielding

Double sided epoxy thickness 15/10th. Non-plated holes. 1 sided tinned square 2 mm<sup>2</sup> pads, drilled 1 mm with DIN 41612 connector. The other side fully copper clad for shielding. Holes profiled to prevent short circuits

Size in mm	Reference
100 x 160	AL 201

## EPROM ERASER



BD12



BD8

### • Models for 12 or 24 memories.

Ready for use unit mounted in a housing with a timer. To erase either 12 or 24 memories simultaneously. Consisting of tube mounting, aluminium case, PVC flanges. **Lifetime of eraser tube 6000 hrs (about 198 000 memories).**

Dimensions (LxWxH)	248 x 170 x 88 mm
Net weight	2,1 kg
Electrical supply	230 V, 50 Hz, 6 W

**Model**  
Model for 12 EPROM's  
Model for 24 EPROM's

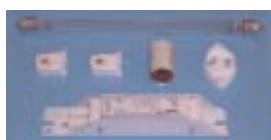
**Reference**  
BD 12  
BD 8

## MEMORY ERASER KIT



BD 1

Within 20 minutes the EPROM can be erased by placing the window towards a special tube. The eprom eraser kit includes : 1x special 6 W tube 22 cm, 1x starter, 1x ballast, 2 x mini sockets for tube.



Model	Reference
Eprom eraser (Kit)	BD 1
Single case for kit BD1	BD 2
Spare parts :	
Special eraser tube 18 µW/cm <sup>2</sup>	DCPD 9
Sockets for tube	DCPD 10
Ballast for EPROM Tube	DCPD 11

## **X-ON Electronics**

Largest Supplier of Electrical and Electronic Components

*Click to view similar products for [cif manufacturer](#):*

Other Similar products are found below :

[AJB58](#) [V900130](#) [AL441](#) [DU68.10](#) [AAC20](#) [AD20](#) [V900131](#) [V900132](#) [AN10](#) [DU64.10](#) [V900121](#) [ABC16](#) [AAC16](#) [DU80](#) [DU67](#) [AEB16](#)  
[AB15](#) [AR224](#) [DW101010](#) [AEB20](#) [AGP20](#) [AJP20](#) [AA20](#) [DU77](#) [DU71](#) [AJP58](#) [AGP30](#) [AA15](#) [ABB16](#) [DU66](#) [AGB30](#) [DU65.10](#) [ADB16](#)  
[AR234](#) [AL435](#) [DU69](#) [AAT10](#) [DU85](#) [ADB20](#) [AR45](#) [AE20](#) [AAB16](#) [AB16](#) [AD16](#) [AJB22](#) [AJP22](#) [AGB10](#) [AR412](#) [AR21](#) [AJP16](#)