

Dimensions

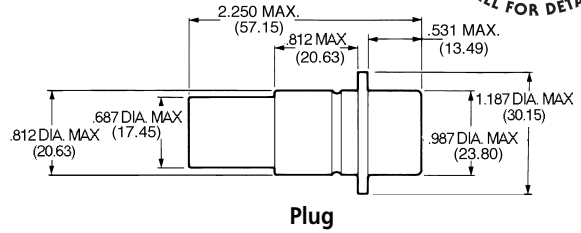


Power Sure-Seal®

Plug



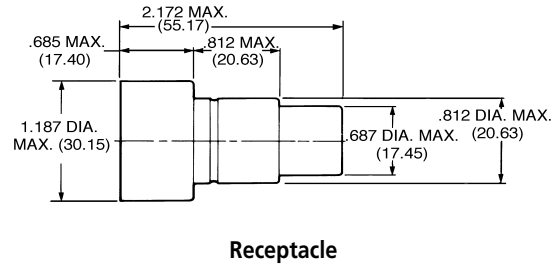
Body Identifier	Part Number	AWG Size
SS-1P-4	120-1905-000	#4 or #6
SS-1P-8	120-1906-000	#8 or #10



Receptacle



Body Identifier	Part Number	AWG Size
SS-1R-4	120-1903-000	#4 or #6
SS-1R-8	120-1904-000	#8 or #10

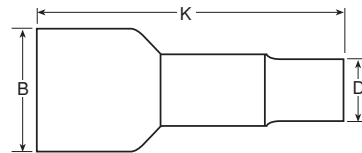


Accessories

Boot



Fits over the rear of the connector and seals the jacket of a multi-conductor cable. Also provides additional strain relief and abrasion resistance.



NEW! Call for new overmolded options and 120-2G heat shrink boot options!

Body Identifier	Part Number	B Dia. Max.	Cable O.D.	K Ref.	D Dia. Max.
SS-2 Boot	317-1398-000	.650 (16.51)	.208-.228 (5.28-5.79)	2.050 (52.07)	.380 (9.65)
SS-3 Boot+	317-1397-000	.610 (15.50)	.220-.240 (5.59-6.10)	2.050 (52.07)	.380 (9.65)
SS-4 Boot+	317-1399-000	.750 (19.05)	.345-.380 (8.76-9.65)	2.050 (52.07)	.500 (12.70)
SS-5-7 Boot	317-8657-000	1.063 (27.00)	.283-.331 (7.20-8.40)	2.441 (62.00)	.492 (12.50)
SS-8-10 Boot	317-8657-002	1.220 (31.00)	.394-.488 (10.00-12.40)	2.480 (63.00)	.732 (18.60)

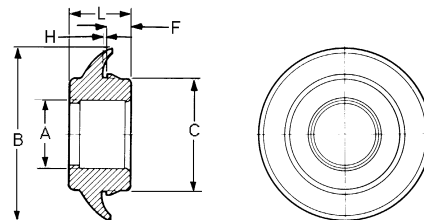
Note: In addition to boot, remember to use 225-0093-000 Wire Hole Fillers to fill any unused contact cavities.
+ May be used to cover industry standard BNC crimp style plugs. Call for more info.

➡ See page 4 for matching plugs and receptacles chart.

Mounting Ring



A Mounting Ring snaps into an appropriate sized hole in a panel or bracket and allows a non-flanged plug or receptacle to be panel mounted.



Part Number	A Dia. Max.	B Dia. Max.	C Dia. Max.	F Max.	H Ref.	L Max.	Hole Diameter	Panel Thickness
351-1640-000	.410 (10.41)	1.275 (32.39)	.790 (20.07)	.230 (5.84)	.055 (1.40)	.690 (17.53)	.781	.060 (1.52)
351-1641-000	.470 (12.06)	1.275 (32.39)	.790 (20.07)	.230 (5.84)	.055 (1.40)	.690 (17.53)	(19.84)	
351-1633-000	.755 (19.05)	2.200 (56.64)	1.445 (36.70)	.330 (8.38)	.065 (1.65)	.830 (21.08)	1.50	
351-1634-000	.875 (22.23)	2.200 (56.64)	1.445 (36.70)	.330 (8.38)	.065 (1.65)	.830 (21.08)	(38.12)	

➡ See page 4 for matching plugs and receptacles chart.

X-ON Electronics

Largest Supplier of Electrical and Electronic Components

Click to view similar products for [sure seal manufacturer](#):

Other Similar products are found below :

[120-1874-000](#) [BAND1](#) [BAND2](#) [BAND4](#) [BAND3](#) [120-1869-000](#) [120-8551-102](#) [120-1870-000](#) [120-8552-102](#) [120-1809-000](#) [317-8657-000](#)
[120-1806-000](#) [317-1398-000](#) [120-1808-000](#) [317-1397-000](#) [120-1805-000](#) [031-8703-100](#) [120-1807-000](#) [120-1804-000](#) [330-8672-100](#) [225-0093-000](#) [030-2196-001](#)