

Resources

▲ For the System CD and Linux image files of this package, please download from the link below:
<http://cd-rfc.terasic.com>

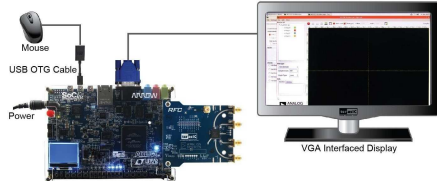


<http://cd-rfc.terasic.com>

Power On Test

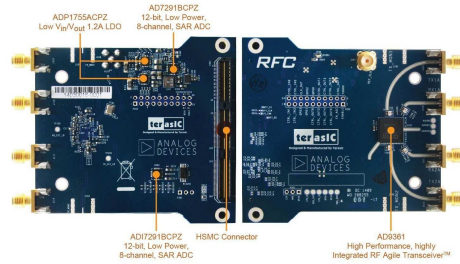
SoCKit is required for RFC board testing.

- 1 Mount the RFC board to HSMC connector on SoCKit and fasten the screws.
- 2 Make sure MSEL[4:0]=0000 on SoCKit.
- 3 Insert the MicroSD card that comes with the RFC kit into SoCKit.
- 4 Connect a VGA monitor to the VGA connector on SoCKit.
- 5 Connect the USB OTG cable that comes with the RFC kit into the USB OTG port on SoCKit.
- 6 Connect a USB mouse to the OTG cable.
- 7 Plug in 12V DC power to SoCKit.
- 8 Power on SoCKit, and it will take about 4 minutes to boot the Linux system.
- 9 After the system boot is completed, ADI IIO Oscilloscope software will appear on the Linux Desktop.
- 10 Use the mouse to navigate/operate the software.



ARRadio

Quick Start Guide >>>



What's in the Box?



If you encounter any problem, please contact us below

Email: support@terasic.com Tel: +886-3-575-0880

X-ON Electronics

Largest Supplier of Electrical and Electronic Components

Click to view similar products for [Adhesive Tapes](#) category:

Click to view products by [Terasic Technologies](#) manufacturer:

Other Similar products are found below :

[PF24.0W](#) [4718](#) [4516-1/4x36](#) [56-YELLOW-34"X72YD](#) [00-021200-13972-7](#) [021200-64630](#) [60 TAPE \(1"\)](#) [62-GRAY-12"X36YD](#) [62-GRAY-1"X36YD](#) [69-1"X36YD](#) [764-1"x36yd-Red](#) [764-1"x36yd-White](#) [PG ASSY](#) [926-1/4X18YD](#) [967454-1](#) [1194-14"X36YD](#) [1181 19MM X 16,5 METERS](#) [1182-7.7X10](#) [1245-34"X18YD](#) [1267](#) [130C-1X15FT](#) [130-1x10FT](#) [1345-3/8x18yrd](#) [1380-2"X8"](#) [E39-RS1-CA](#) [1900-48mm](#) [22-1/2X36YD](#) [2229-P-2-1/2x3-3/4](#) [88-SUPER-34X44FT](#) [890103N001](#) [2670](#) [SJ3527N-Black-1.5"x50yd](#) [EVK-TA-TM047NBH01](#) [AD-UCUSB-DCAUD-SPL](#) [20-1"X60YDS](#) [2020-18mmx55m](#) [H150](#) [3900-Blue](#) [3939-24mmx55m](#) [396-1"x36yd](#) [4016-34"x36yd](#) [4462W-12"x72yd](#) [44-TAN-14"X90YD](#) [4504-34x18](#) [471-Trans-1"x36yd-Bulk](#) [5414 34X36](#) [C-22](#) [35-Gray-1/2](#) [371-Tan-48mmx50m](#) [4008-12"X36YD](#)