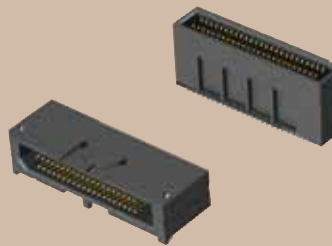




TEMS-125-02-03.0-H-D

TEM-145-02-07.0-H-D-WT



TEM-120-02-DH1-S-D-A



TEM-110-02-DH1-S-D-A

(0,80 mm) .0315"

TEM, TEMS, TEM-DH SERIES

MICRO TIGER EYE™ HEADER

TEM, TEM-DH Mates with:
SEM, SEML

TEMS Mates with:
SEMS

SPECIFICATIONS

For complete specifications and recommended PCB layouts see www.samtec.com?TEM or www.samtec.com?TEMS

Insulator Material:
Black Liquid Crystal Polymer
Terminal Material:
Phosphor Bronze
Plating:
Au or Sn over 50µ" (1,27 µm) Ni
Operating Temp Range:
-55°C to +125°C
Current Rating:
2.6 A per pin
(1 pin powered per row)
RoHS Compliant:
Yes

Processing:
Lead-Free Solderable:
Yes
SMT Lead Coplanarity:
(0,10 mm) .004" max

RECOGNITIONS

For complete scope of recognitions see www.samtec.com/quality



FILE NO. E111594

TYPE STRIP	1	NO. PINS PER ROW	02	STACK HEIGHT	PLATING OPTION	D	OPTION	OTHER OPTION
TEM = Tiger Eye™ Strip		05, 10, 15, 20, 25 30, 35, 40, 45, 50 (TEM only) (Standard sizes)		-03.0 = 6 mm Stack Height -04.0 = 7 mm Stack Height -07.0 = 10 mm Stack Height	-FG = Gold Flash -G = 10µ" (0,25 µm) Gold on contact, Gold Flash on tail -H = 30µ" (0,76 µm) Gold on contact, Gold Flash on tail		Leave blank for TEMS -A = Alignment Pin (Not available with -LC or -WT) -LC = Locking Clip (Not available with -A or -WT) (Manual placement required) -WT = Weld Tab (Not available with -A or -LC)	-K = (5,50 mm) .217" DIA Polyimide film Pick & Place Pad (Required for TEMS) -TR = Tape & Reel (Required for TEMS)

STACK HEIGHT	A	MATED HEIGHT* (WHEN MATED WITH SEM/SEMS)
-03.0	(5,610) .2209	6 mm
-04.0	(6,610) .2602	7 mm
-07.0	(9,610) .3783	10 mm

*Processing conditions will affect mated height.

28+
Gbps

E.L.P.
EXTENDED LIFE PRODUCT
10 year Mixed Flowing Gas with 30µ" Gold
Call Samtec for maximum mated cycles

OTHER SOLUTIONS

- (1,27 mm) .050" board-to-board and cable-to-board Tiger Eye™ systems available.
- Board Stacking: See SFM, TFM Series
- Cable Assemblies: See SFSD, TFSD Series Contact Samtec.

ALSO AVAILABLE (MOQ Required)

- Other sizes
 - Other platings
- Contact Samtec.

Note: Some sizes, styles and options are non-standard, non-returnable.

TEM	1	NO. OF POSITIONS	02	DH1	PLATING OPTION	D	OPTION
		10, 15, 20, 25, 30, 35, 40, 45, 50 (Standard sizes)			-F = Gold Flash on contact, Matte Tin on tail -L = 10µ" (0,25 µm) Gold on contact, Matte Tin on tail -S = 30µ" (0,76 µm) Gold on contact, Matte Tin on tail		-A = Alignment Pin

Due to technical progress, all designs, specifications and components are subject to change without notice.

WWW.SAMTEC.COM

X-ON Electronics

Largest Supplier of Electrical and Electronic Components

Click to view similar products for [FFC & FPC Connectors](#) category:

Click to view products by [Samtec](#) manufacturer:

Other Similar products are found below :

[HFW11R-1STE1H1LF](#) [FH29B-100S-0.2SHW\(99\)](#) [FA5S008HP1](#) [FH29B-120S-0.2SHW\(99\)](#) [FH29B-80S-0.2SHW\(99\)](#) [FHS-16](#) [FPH-2022G](#)
[52610-1075](#) [52610-1275](#) [52610-1934](#) [XF3M\(1\)-1415-1B-R100](#) [501864-3091-TR225](#) [0525594033](#) [086210010340800](#) [086222026001800](#)
[52271-2869-CUT-TAPE](#) [62674-201121DLF](#) [62684-36210E9ALF](#) [52610-1675](#) [52746-1671-TR250](#) [10051922-2810EHLF](#) [6-520415-9](#)
[BD021-09A-A1-0350-0200-0550-LD](#) [SFV6R-1STE9HLF](#) [XF3M-2915-1B-R100](#) [1658549-1](#) [62674-221121ALF](#) [46214008010800](#)
[046298003000883](#) [151660622](#) [842-816-2630-035](#) [AYF530665TA](#) [AYF351525](#) [046296011930846+](#) [AYF352325A](#) [046254020000800+](#)
[FH19C-13S-0.5SH\(99\)](#) [FH39J-51S-0.3SHW\(99\)](#) [AYF355125A](#) [AYF530365TA](#) [FH29B-44S-0.2SHW\(99\)](#) [SFW5R-2STAE9LF](#) [AYF351125A](#)
[AYF350725A](#) [62684-502100AHLF](#) [FH39-61S-0.3SHW\(99\)](#) [AYF414035A](#) [10064555-172520HLF](#) [AYF212335A](#) [504754-2500](#)