

Nipples

Malleable Iron

TAPER THREADS TO BS 21 (ISO 7) · BSI KITEMARK APPROVED · INDIVIDUALLY TESTED · BLACK OR GALVANISED



PN25

BS 143 AND ISO 49

144 HEXAGON NIPPLE EQUAL

ISO/BS Code N8

144

HEXAGON NIPPLE

Size (1 & 2)	a	f	Size (1 & 2)	a	f
* 1/4	33	15	1 1/2	63	60
* 3/8	35	18	2	71	72
1/2	44	23	2 1/2	80	77
3/4	49	28	3	89	101
1	56	46	4	102	124
1 1/4	63	55	6	114	172

* Fittings will normally be supplied in mild steel with self colour or galvanised finish and conform to BS 1740 Part 1.



145 HEXAGON NIPPLE REDUCING

ISO/BS Code N8

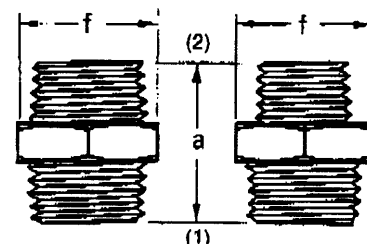
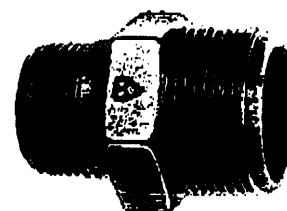
145

HEXAGON NIPPLE REDUCING

Size (1) (2)	a	f	Size (1) (2)	a	f
* 1/4 x 1/8	30	15	1 1/2 x 1	64	50
* 3/8 x 1/4	35	18	1 1/2 x 1 1/4	64	50
** 1/2 x 1/4	41	23	2 x 1	69	61
** 1/2 x 3/8	41	23	2 x 1 1/4	69	61
3/4 x 3/8	48	28	2 x 1 1/2	71	62
3/4 x 1/2	49	28	2 1/2 x 2	77	77
1 x 1/2	56	35	3 x 2	86	90
1 x 3/4	56	35	3 x 2 1/2	85	90
1 1/4 x 1/2	64	44			
1 1/4 x 3/4	64	44			
1 1/4 x 1	64	44			

* Fittings will normally be supplied in mild steel with self colour or galvanised finish.

** Fittings will normally be supplied in malleable iron but may be supplied in mild steel.



EQUAL REDUCING

f = across flats dimension of hexagon

Sockets and Caps

Malleable Iron

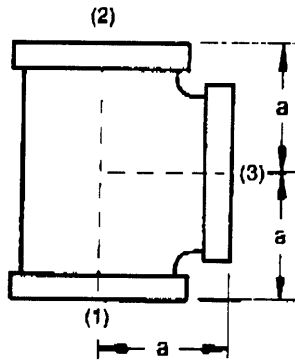
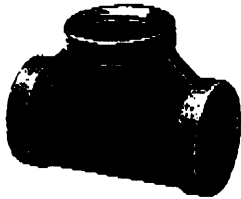




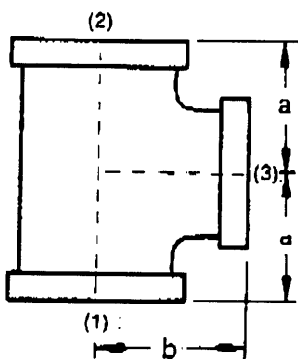
PN25

BS 143 AND ISO 49

161 TEE



EQUAL



REDUCING ON BRANCH

Tees

Malleable Iron

TAPER THREADS TO BS 21 (ISO 7) · BSI KITEMARK APPROVED · INDIVIDUALLY TESTED · BLACK OR GALVANISED

161 TEE EQUAL

ISO/BS Code B1

Size (1,2 & 3)	a	Size (1,2 & 3)	a
1/8	19	1 1/2	50
1/4	21	2	58
3/8	25	2 1/2	69
1/2	28	3	78
3/4	33	4	96
1	38	5	115
1 1/4	45	6	131

161 TEE REDUCING ON BRANCH

ISO/BS Code B1

Size (1 & 2) (3)	a	b	Size (1 & 2) (3)	a	b
3/8 x 1/4	23	23	2 1/2 x 1/2	41	57
1/2 x 1/4	24	24	2 1/2 x 3/4	44	59
1/2 x 3/8	26	26	2 1/2 x 1	47	60
3/4 x 1/4	26	27	2 1/2 x 1 1/4	52	62
3/4 x 3/8	28	28	2 1/2 x 1 1/2	55	63
3/4 x 1/2	30	31	2 1/2 x 2	61	66
1 x 1/4	28	31	3 x 1/2	51	68
1 x 3/8	32	35	3 x 3/4	51	68
1 x 1/2	32	35	3 x 1	51	68
1 x 3/4	35	36	3 x 1 1/4	55	70
1 1/4 x 1/2	34	38	3 x 1 1/2	58	71
1 1/4 x 3/4	36	41	3 x 2	64	73
1 1/4 x 1	40	42	3 x 2 1/2	72	76
1 1/2 x 1/2	36	42	4 x 1	56	81
1 1/2 x 3/4	38	44	4 x 1 1/4	61	83
1 1/2 x 1	42	46	4 x 1 1/2	64	84
1 1/2 x 1 1/4	46	48	4 x 2	70	86
2 x 1/2	38	48	4 x 2 1/2	77	89
2 x 3/4	40	50	4 x 3	84	92
2 x 1	44	52	6 x 3	92	121
2 x 1 1/4	48	54	6 x 4	105	125
2 x 1 1/2	52	55			

cm 15/5

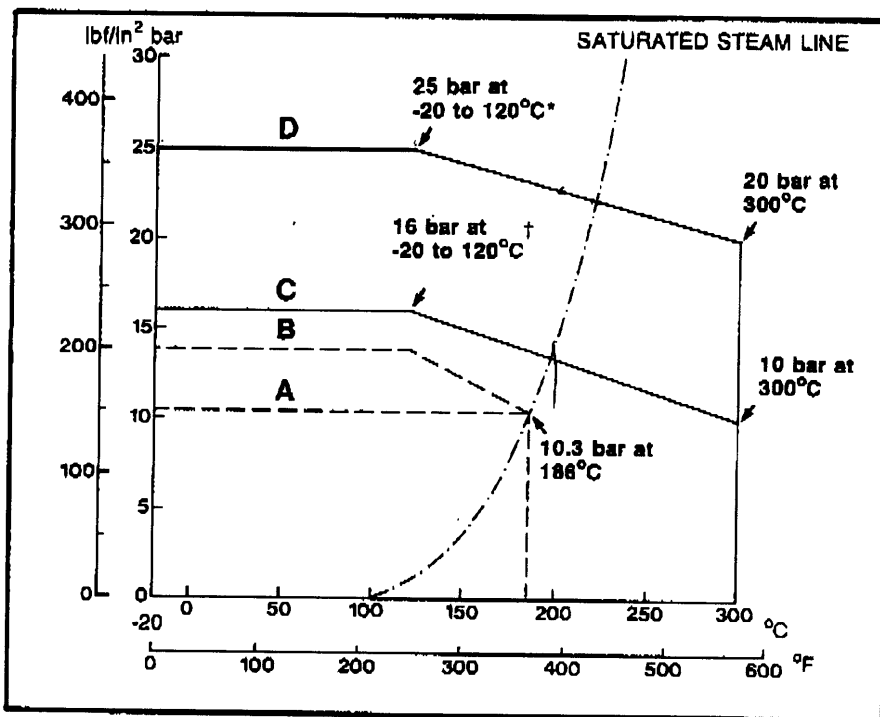
Specification

PRESSURE/TEMPERATURE RATINGS

BS 143 & 1256 : 1986 states that fittings are for general purposes for the transmission of fluids within the pressure and temperature ranges specified. The ratings given are updated from those in the 1968 edition, both for malleable cast iron and bronze fittings.

PRESSURE/TEMPERATURE RATINGS

The graph below shows the new BS ratings and compares them with the ratings in the previous edition. Crane malleable iron and bronze fittings are suitable for use at the new ratings with the exception of certain unions (see note \emptyset below), but such use is dependent on the suitability of the connecting pipe material, the threaded joint and any thread sealants used. Due consideration should also be given to any applicable codes of practice. Pressures stated are maximum non-shock gauge.



* Hot dip zinc coated (galvanised) fittings should not be used below -10°C (14°F).

† Bronze fittings can be used at temperatures below -20°C (-4°F). Refer to Crane for confirmation of suitability.

BS ref.	Material	Fitting type	Steam, air gas and oil service	Water service
BS 143 & 1256 1968	Mall. iron	All pipe fittings (excluding unions)	Graph A	Graph B
	Bronze		Graph A	Graph B
BS 143 & 1256 1986	Mall. iron	All pipe fittings (including unions \emptyset)	Graph D	Graph D
	Bronze		Graph C	Graph C

\emptyset Cat. No. 241 unions are limited to 230°C maximum.
Cat. Nos. 271, 272, 276, 277 and 289 unions are limited to 208°C maximum.

X-ON Electronics

Largest Supplier of Electrical and Electronic Components

Click to view similar products for [crane fluid systems](#) manufacturer:

Other Similar products are found below :

[Crane Fluid Systems](#)