

Magnetic proximity sensors

MQ 10 series, sensing range 60 mm

DC 3-wire, plastic housing

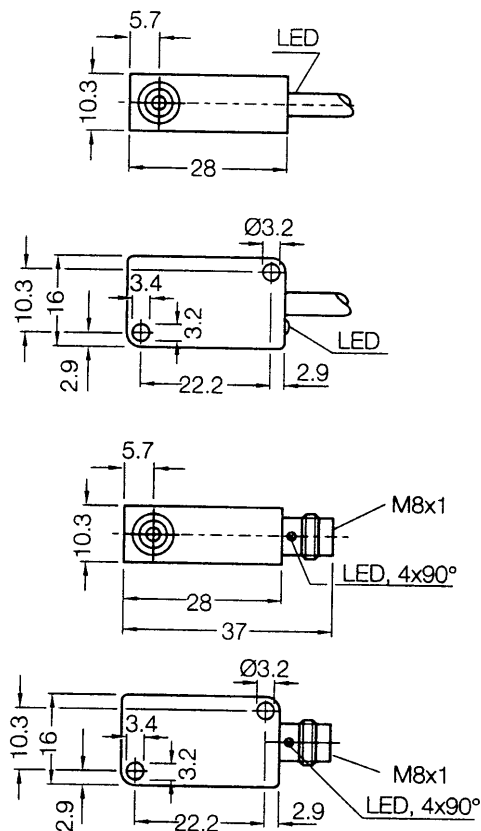
Dimensions in mm



Features



- ▶ Can be installed flush and non-flush in metal
- ▶ Sensing range up to 60 mm
- ▶ PNP or NPN output
- ▶ High switching frequency
- ▶ Short-circuit protection (pulsed)
- ▶ Plastic housing
- ▶ Cable or connector
- ▶ Enclosure rating IP 67
- ▶ LED status indicator

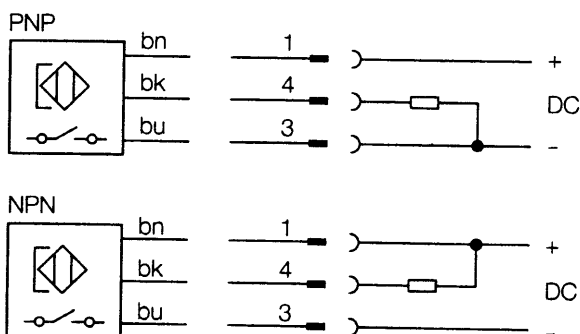


Accessories

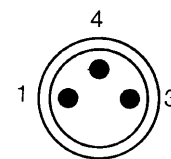
Round connectors

Magnets

Connection diagram



Wire colour	Contact	Assignment
bn brown	1	+ V DC
bk black	4	NO
bu blue	3	- V DC



Electrical and mechanical data

Operating voltage U_b	10 ... 30 V DC	Wire-break protection	yes
Ripple U_{pp}	$\leq 10\%$ of U_b	Short-circuit protection (pulsed)	yes
Voltage drop U_d (at I_a max.)	≤ 1.5 V	Reverse polarity protection	yes
Power consumption (without load)	≤ 10 mA	Power-up pulse suppression	yes
Continuous current I_a	≤ 300 mA	Enclosure rating to EN 60529	IP 67
Time delay before availability t_v	≤ 2 ms	Shock and vibration stress	30 g, 11 ms 10 to 55 Hz, 1 mm
Hysteresis H	1% - 10% of s_r	Ambient temperature T_a	- 25 ... + 75 °C
Repeatability R (U_b and T_a constant)	$\leq 1\%$ of s_r	Housing material	Plastic
Temperature drift	$\pm 10\%$ of s_r	Connection cable	PUR-PVC, 3 x 0.25 mm ²
EMC	to EN 60 947-5-2		

Selection table

Sensing range s_n^* mm	Magnetic alignment	Switching output	Output function	Switching frequency f in Hz	Connection	Type	Order number
60	Axial	PNP		5000	Cable 2 m	MQ10-60APS-KU0	7900278
60	Axial	NPN		5000	Cable 2 m	MQ10-60ANS-KU0	7900279
60	Axial	PNP		5000	Connector M8 x 1 mm	MQ10-60APS-KT0	7900280
60	Axial	NPN		5000	Connector M8 x 1 mm	MQ10-60ANS-KT0	7900281

* Sensing range s_n based on installation in non-magnetizable material using magnet M 4.0

Sensing ranges (Typical values)

Magnet type	Sensing range s_n Any installation version (flush or non-flush) in non-magnetizable material	Sensing range s_n Flush installation in magnetizable material (e.g. iron)
M 1.0	23 mm	12 mm
M 2.0	24 mm	10 mm
M 3.0	36 mm	15 mm
M 4.0	60 mm	20 mm
M 5.0 / 5.1	68 mm	25 mm

X-ON Electronics

Largest Supplier of Electrical and Electronic Components

Click to view similar products for [Proximity Sensors](#) category:

Click to view products by [Sick](#) manufacturer:

Other Similar products are found below :

[01.001.5653.1](#) [70.340.1028.0](#) [70.360.2428.0](#) [70.364.4828.0](#) [70.810.1053.0](#) [72.360.1628.0](#) [73.363.6428.0](#) [9221350022](#) [980659-1](#) [QT-12](#)
[E2EX10D1NN](#) [E2E-X14MD1-G](#) [E2E-X2D1-G](#) [E2EX2ME2N](#) [E2E-X3D1-N](#) [10M](#) [E2E-X4MD1-G](#) [E2FMX1R5D12M](#) [E2K-F10MC1](#) [5M](#)
[EI1204TBOSL-6](#) [EI5515NPAP](#) [BSA-08-25-08](#) [IC08ANC15PO-K](#) [IMM2582C](#) [25.161.3253.0](#) [25.332.0653.1](#) [25.352.0653.0](#) [25.352.0753.0](#)
[25.523.3253.0](#) [9151710023](#) [922FS1.5C-A4P-Z774](#) [SC606ABV0S30](#) [SM952A126100LE](#) [A1220EUA-T](#) [F3S-A162-U](#) [CL18](#) [QT-08L](#)
[34.110.0010.0](#) [TL-C2MF1-M3-E4](#) [IMM32188C](#) [IS2](#) [IS31SE5000-UTLS2-TR](#) [34.110.0021.0](#) [34.110.0022.0](#) [CA150-120VACDC](#)
[VM18VA3000Q](#) [XS508BSCBL2](#) [XS512BLNAM12](#) [XS512BLNBL2](#) [XS512BLPAL5](#) [XS518B1MBU20](#)