

Tina-Pin-RE lenses for Luxeon Rebel LEDs



LUXEON



- Designed & optimized for Luxeon Rebel series of LEDs
- Lens material optical grade PMMA. Allows use of high current and temperature conditions (105°C/220°F)
- Integrated holder with small position pins. See drawing below for more details
- Best available optical efficiency, over 90%, with an extremely good cutoff of light
- Fastening to heat sink with a PU foam adhesive tape of automotive grade (included)
- Compact dimensions 16.1 x 10.1 mm.

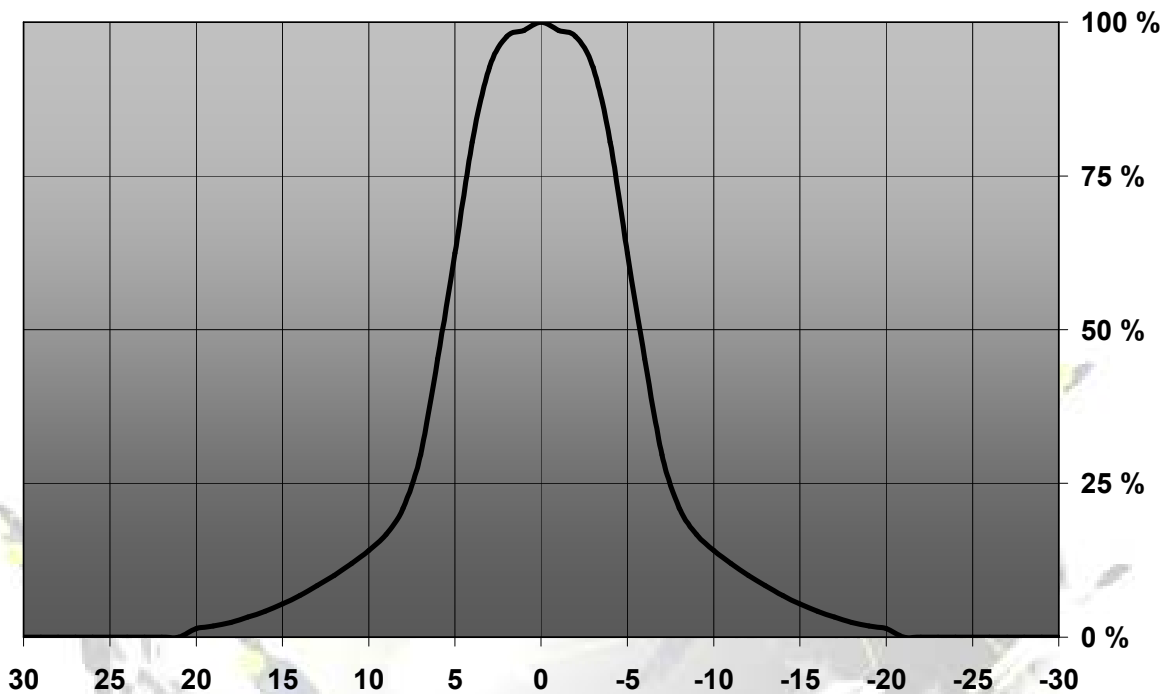
LENS TYPES

NAME	ORDERING CODE	FWHM Angle
Tina-Pin-RE Real Spot	FA11212_Tina-Pin-RE-RS	±6°
Tina-Pin-RE Diffuser	FA11209_Tina-Pin-RE-D	±7.5°
Tina-Pin-RE Medium	FA11210_Tina-Pin-RE-M	±16°
Tina-Pin-RE Oval	FA11203_Tina-Pin-RE-O	±7° x ±18°
Tina-Pin-RE Wide	FA11211_Tina-Pin-RE-W	±22°

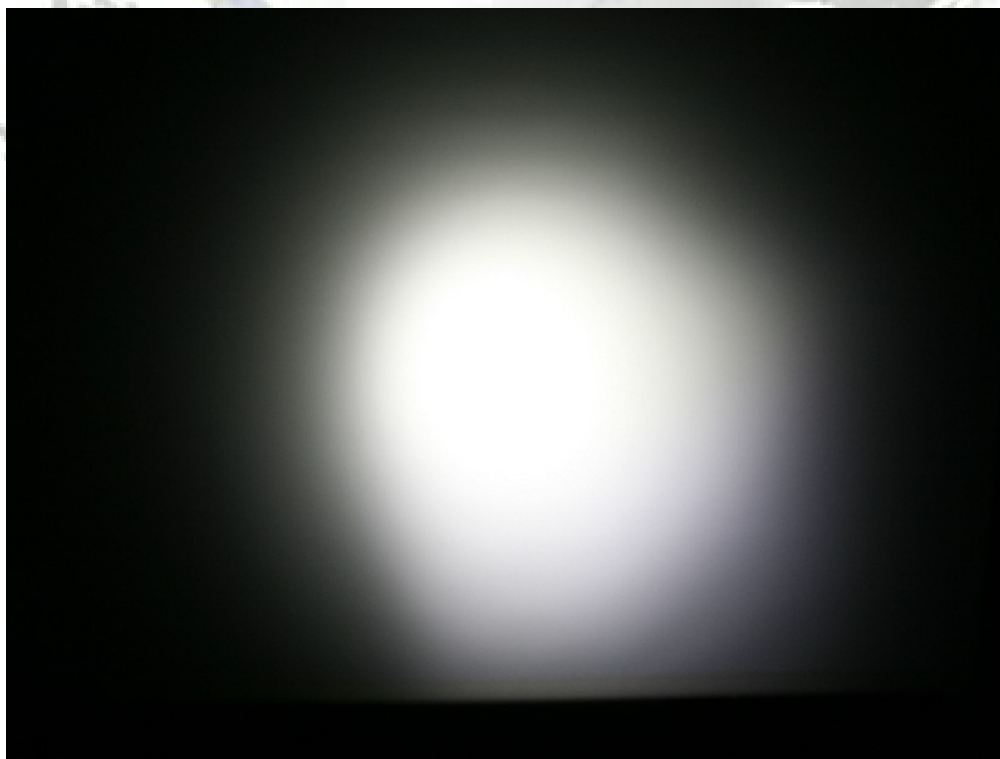
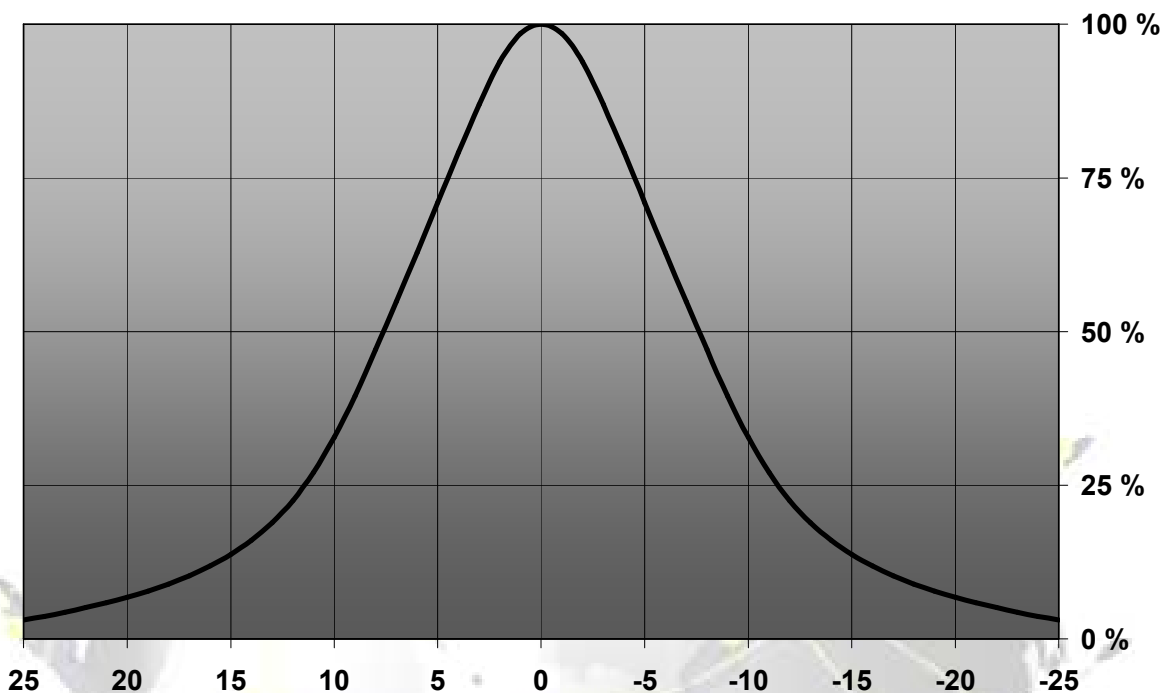
© Ledil Oy – PRELIMINARY - Subject to change without prior notice

MEASUREMENTS

Relative Intensity of FA11212_Tina-RE-RS

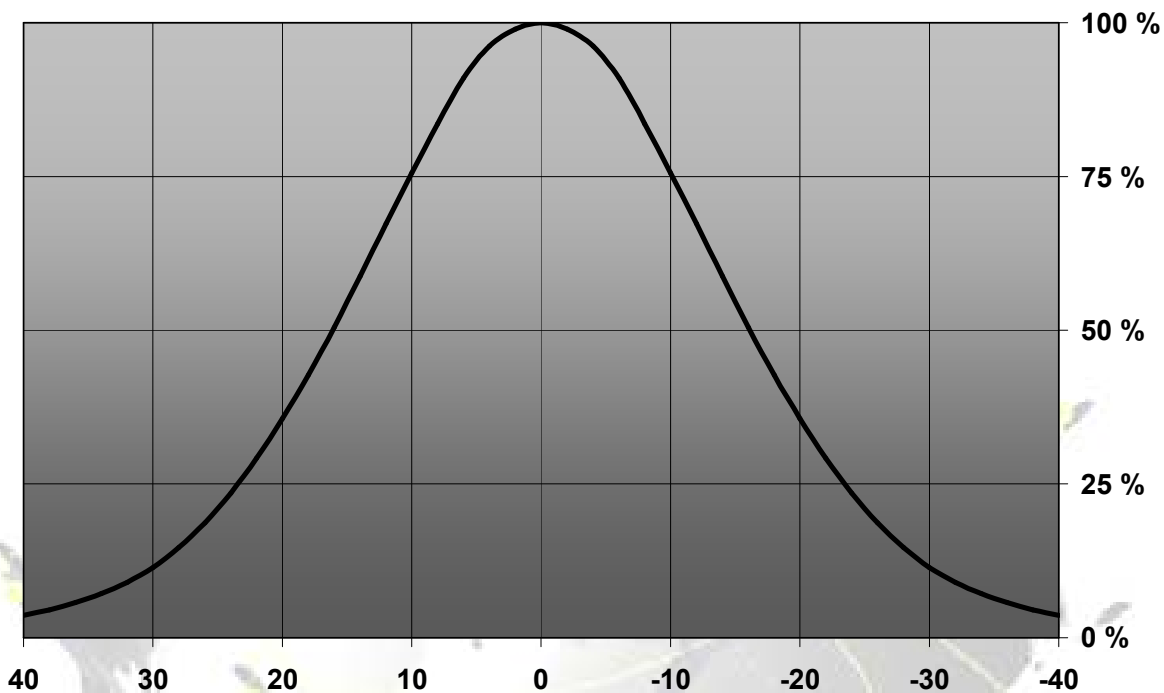


© Ledil Oy – PRELIMINARY - Subject to change without prior notice

Relative Intensity of FA11209_Tina-RE-D

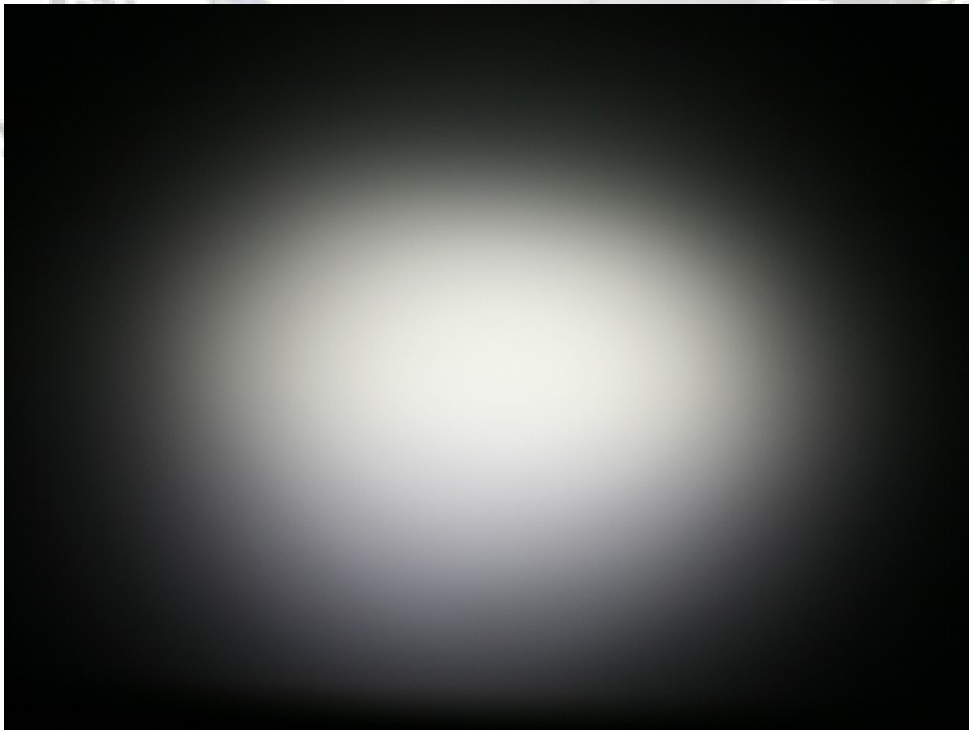
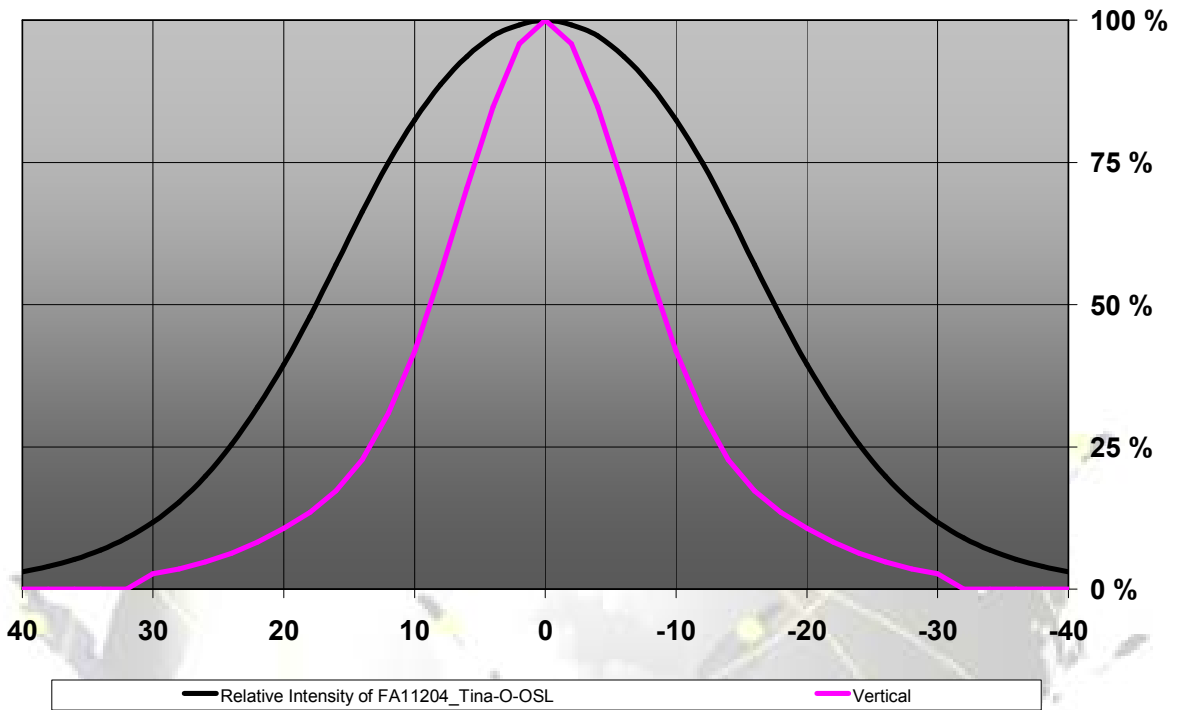
© Ledil Oy – PRELIMINARY - Subject to change without prior notice

Relative Intensity of FA11210_Tina-RE-M



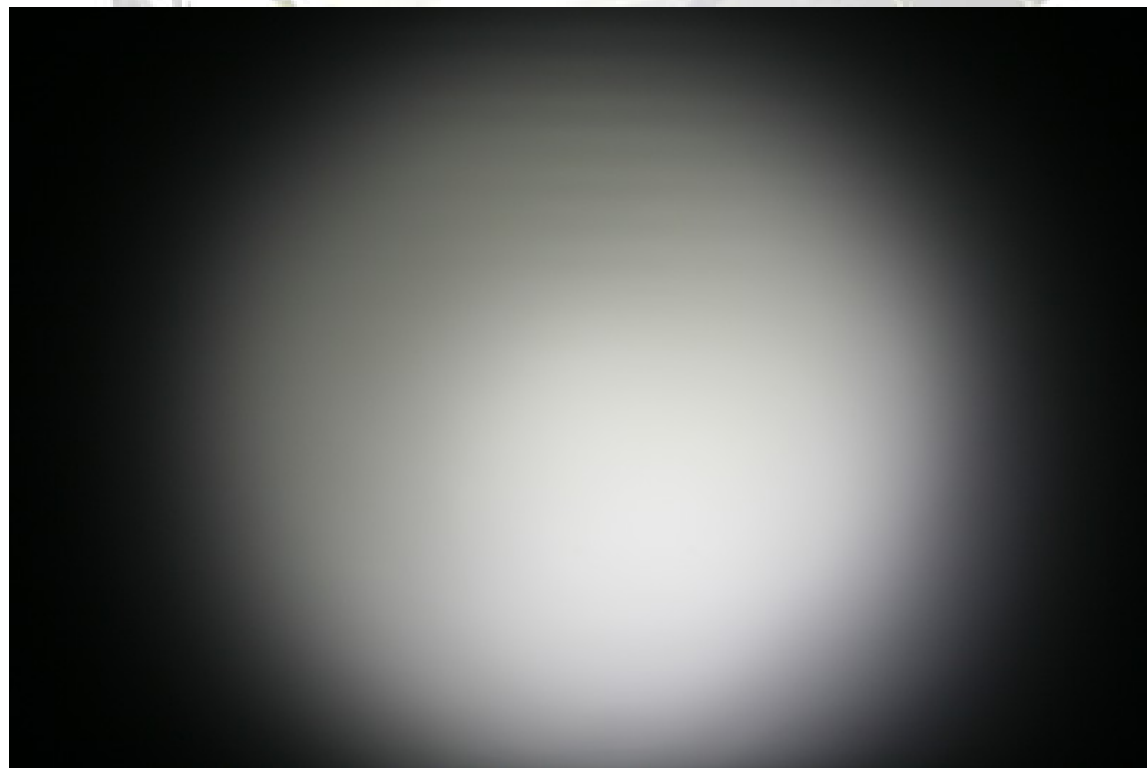
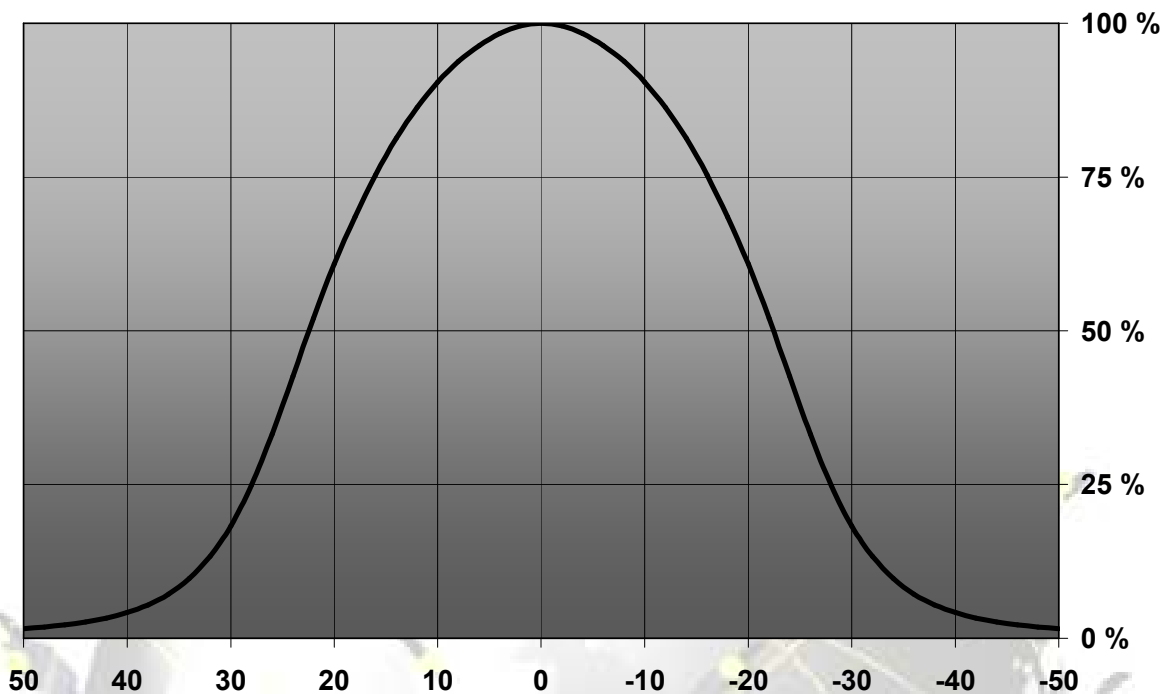
© Ledil Oy – PRELIMINARY - Subject to change without prior notice

Relative Intensity of FA11204_Tina-O-OSL



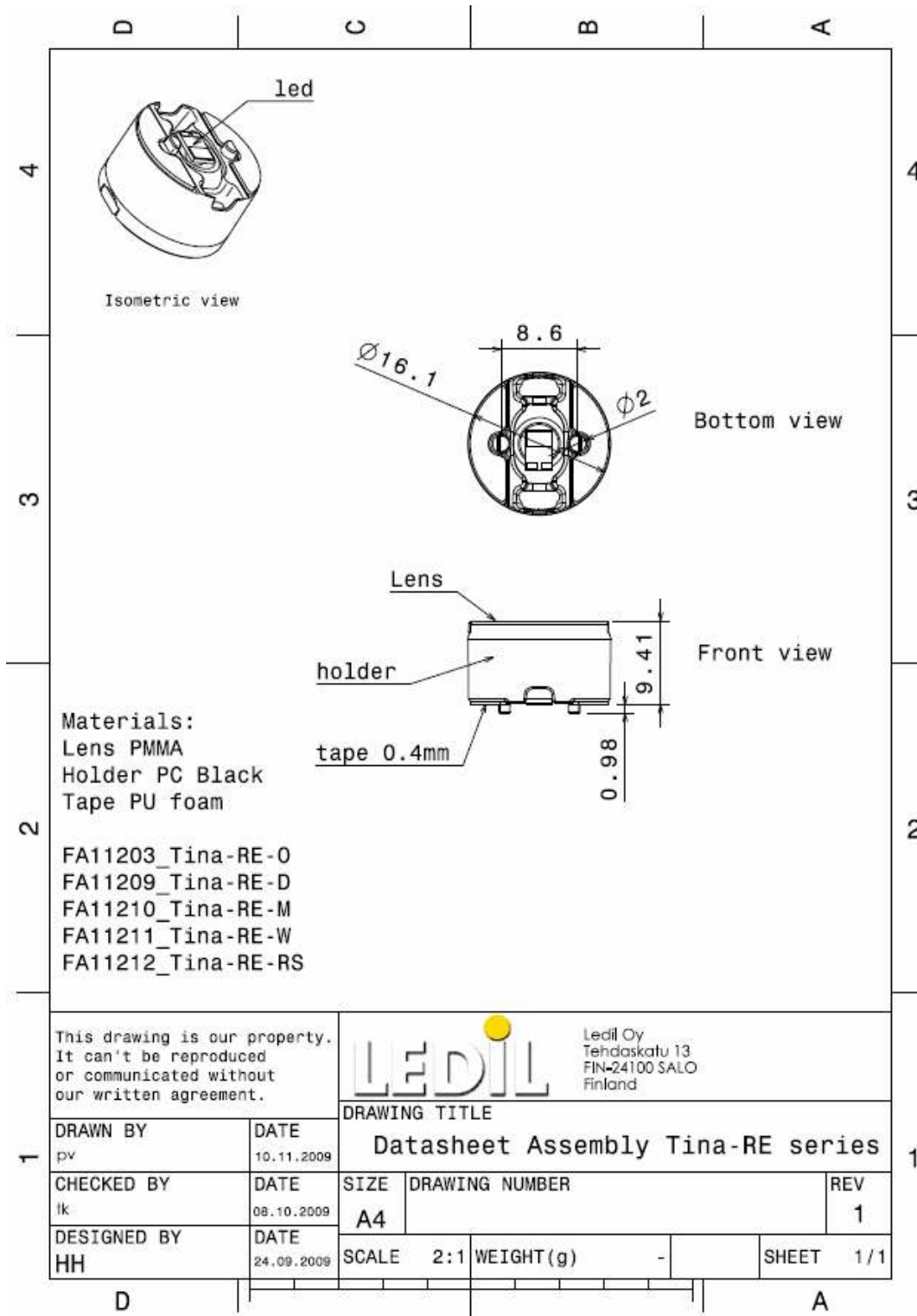
© Ledil Oy – PRELIMINARY - Subject to change without prior notice

Relative Intensity of FA11211_Tina-RE-W



© Ledil Oy – PRELIMINARY - Subject to change without prior notice

DRAWINGS



© Ledil Oy - PRELIMINARY - Subject to change without prior notice

X-ON Electronics

Largest Supplier of Electrical and Electronic Components

Click to view similar products for [LED Lenses](#) category:

Click to view products by [Ledil](#) manufacturer:

Other Similar products are found below :

[131A-303G](#) [131A-304R](#) [139A-403R](#) [139A-403A](#) [160A-604R](#) [160A-604Y](#) [SMB_200_GTP](#) [SMQ_250_ATP](#) [SMS_172_RTP](#) [SQB_400_ATP](#)
[SSN-LX13049L-CD](#) [SSN-LX18754A](#) [SSN-LX18754C](#) [2817](#) [CLR_301_YTP](#) [CMC_313_ATP](#) [3121](#) [3124](#) [3125](#) [39-30-W03](#) [4623](#) [4745](#)
[4747](#) [3111](#) [3114](#) [3115](#) [3121](#) [3122](#) [3124](#) [3125](#) [4327](#) [4743](#) [4745](#) [4752](#) [4757](#) [SSN-LX690L1-C](#) [SQL_360_YTP](#) [SMQ_250_BTP](#) [3114](#) [3113](#)
[CMS444CTP](#) [1125-227-000](#) [4317](#) [4347](#) [4741](#) [4316](#) [4343](#) [4345](#) [4345](#) [4346](#)