



HDMI 1.3 Cables

HDMI cables suitable for distributing high quality digital video and audio.

Featuring gold-plated connectors for improved performance, these cables are HDMI 1.3b compliant.



Models:

Model:	Description
HDMI1MTR	1 metre
HDMI3MTR	3 metres
HDMI5MTR	5 metres
HDMI10MTR	10 metres

Blue LED HDMI 1.4 Cable

High quality and distinct male-to-male cables featuring blue LED-lit connectors and robust, flexible blue nylon braiding.

With gold-plated connectors for high performance, these cables are HDMI 1.4 compliant.



Models:

Model:	Description
STA-L5010B-1M	1 metre
STA-L5010B-3M	3 metres
STA-L5010B-5M	5 metres
STA-L5010B-10M	10 metres

High Performance HDMI 1.4 Cable

High performance HDMI 1.4 compliant cable, featuring gold-plated connectors.



Models:

Model:	Description
STA-5010-1M-BLUE	1 metre
STA-5010-3M-BLUE	3 metres
STA-5010-5M-BLUE	5 metres
STA-5010-10M-BLUE	10 metres
STA-5010-1M-RED	1 metre
STA-5010-3M-RED	3 metres
STA-5010-5M-RED	5 metres
STA-5010-10M-RED	10 metres
STA-5010-1M-GREEN	1 metre
STA-5010-3M-GREEN	3 metres
STA-5010-5M-GREEN	5 metres
STA-5010-10M-GREEN	10 metres



HDMI to Ferrule Cable

Cable assembly one end with HDMI connector on the other end cut off and crimping with ferrules fitted.



Models:

Model:	Description
HDMI-FRL-5M	5 metres
HDMI-FRL-10M	10 metres
HDMI-FRL-15M	15 metres



• Mini HDMI Cables

Features:

- HDMI M/MINI HDMI M cable
- PE Inner Mold, Copper shell, Gold Plated
- Black & Orange 2 color molding, PVC
- Bare copper conductor, CCA braiding
- 3 Shielding, standard wire spec, Version 1.3v, 30AWG OD6.0mm UL20276, 1P+D+A+MY)*4P+1P+5C+AB+Jacket



Models:

Model:	Description
STA-201A-AC	1 metre
STA-201A-AC	3 metres
STA-201A-AC	5 metres

• Mini HDMI - Standard HDMI Cables

Features:

- MINI HDMI M/M cable
- PE Inner Mold, Copper shell, Gold Plated
- Black & Orange 2 color molding, PVC
- Bare copper conductor, CCA braiding
- 3 Shielding, standard wire spec, Version 1.3v, 30AWG OD6.0mm UL20276, 1P+D+A+MY)*4P+1P+5C+AB+Jacket



Models:

Model:	Description
STA-201A-CC	1 metre
STA-201A-CC	3 metres
STA-201A-CC	5 metres

• HDMI Couplers/Adaptors

Models:

Model:	Description
HDMI-RA-COUPLER	90° HDMI-to-HDMI Coupler
HDMI-HDMI F/F	HDMI-to-HDMI Coupler
HDMI-DVI-F/M	HDMI Female to DVI-D Male Adaptor
HDMI-DVI-M/F	HDMI Male to DVI-D Female Adaptor



- **HDMI-DVI 2M:** HDMI to DVI-D 2 metre Cable
- **HDMI-DVI 5M:** HDMI to DVI-D 5 metre Cable

Convenient convertor cables, allowing HDMI sources to be connected to DVI-D equipment and vice-versa.





Clever Little Box



- **STA-DP002 (1M):** Premier DisplayPort Male-to-Male Cables -1 metre
- **STA-DP002 (2M):** Premier DisplayPort Male-to-Male Cables -2 metres
- **STA-DP002 (5M):** Premier DisplayPort Male-to-Male Cables -5 metres

Features:

- DisplayPort M/M cable, overall braid
- PE Inner mold, Copper Shell, Gold plated
- White molding, PVC
- Bare copper conductor, CCA braiding
- 3 shielding with standard wire spec, Version 1.3v, 30AWG OD7,3mm UL20276, 1P+D+A+MY *4P+1P+5C+AB+PVC



www.cie-group.com

CIE-Group Widdowson Close Blenheim Ind Est Bulwell Nottingham NG6 8WB England
T: +44(0)115 9770075 F: +44(0)115 9770081 E: info@cie-group.com W: www.cie-group.com


A better way to buy AV



● **CVT02-04CA0202:** Mini DisplayPort-to-DVI Cable -100mm

Features:

- Compliant with DisplayPort Interoperability specification v1.1a
- Support full DisplayPort link training
- Compliant with DVI 1.1 specification up to 1.65Gbps
- ESD protect: Human Body Mode at 8Kv, Machine Mode at 400v and Charged Device Mode at 2kv
- PC: VGA, SVGA, XGA, SXGA, and UXGA
- HDTV: 480i, 576i, 480p, 576p, 1080i and 1080p
- Standby mode current: 64uA
- Cable Type, Plastic Cover Assembly, Chip on DVI side, Length=100mm, CE/FCC, RoHS
- Length = 100mm



● **CVT02-03CA0202:** Mini DisplayPort-to-HDMI Cable -100mm

Features:

- Compliant with DisplayPort Interoperability specification v1.1a
- Support full DisplayPort link training
- Compliant with HDMI 1.3a specification up to 2.25Gbps
- ESD protect: Human Body Mode at 8kv, Machine Mode at 400v and Charged Device Mode at 2kv
- PC: VGA, SVGA, XGA, SXGA, and UXGA
- HDTV: 480i, 576i, 480p, 576p, 1080i and 1080p
- Standby mode current: 64uA
- Cable Type, Plastic Cover Assembly, Chip on HDMI side, Length=100mm, CE/FCC, RoHS
- Length = 100mm



● **CVT02-05CA0202:** Mini DisplayPort-to-VGA Cable -100mm

Features:

- DisplayPort 1.1a compliant receiver offering 1.62 and 2.7Gbps over 4 lanes
- Support full DisplayPort link training
- Video resolution up 1920 x 1200 x 60Hz
- ESD protect: Human Body Mode at 8Kv, Machine Mode at 400v and Charged Device Mode at 2kv
- PC: VGA, XGA, SVGA, SXGA, UXGA and WUXGA
- Cable Type, Plastic Cover Assembly, Chip on VGA side
- Length = 100mm





• **CVT01-04CA0205:** DisplayPort Male-to-DVI Male Cable - 1.8m

Features:

- Compliant with DisplayPort Interoperability specification V1.1a
- Support full DisplayPort link training
- Compliant with DVI 1.1 specification up to 1.65Gbps
- ESD protect: Human Body Mode at 8kv, Machine Mode at 400v, and Charged Device Mode at 2kv
- PC: VGA, SVGA, XGA, SXGA, and UXGA
- HDTV: 480i, 576i, 480p, 576p, 1080i and 1080p
- Standby mode current: 64uA
- Length = 1.8 metres



• **CVT01-03CA0205:** DisplayPort Male-to-HDMI Male Cable - 1.8m

Features:

- Compliant with DisplayPort Interoperability specification v1.1a
- Support full DisplayPort link training
- Compliant with HDMI 1.3a specification up to 2.25Gbps
- ESD protect: Human Body Mode at 8kv, Machine Mode at 400v and Charged Device Mode at 2kv
- PC: VGA, SVGA, XGA, SXGA, and UXGA
- HDTV: 480i, 576i, 480p, 576p, 1080i and 1080p
- Standby mode current: 64uA
- Length = 1.8 metres





• **CVT01-05AA0201:** DisplayPort-to-VGA Adaptor

Features:

- DisplayPort 1.1a compliant receiver offering 1.62 and 2.7Gbps over 4 lanes
- Support full DisplayPort link training
- Video resolution up 1920 x 1200 x 60Hz
- ESD protect: Human Body Mode at 8kv, Machine Mode at 400v and Charged Device Mode at 2kv
- PC: VGA, XGA, SVGA, SXGA, UXGA and WUXGA
- W/Latch, W/LED, Adapter Type, Plastic Cover Ass'y, RoHS



• **CVT01-04CA0203:** DisplayPort-to-DVI Cable -100mm

Features:

- Compliant with DisplayPort Interoperability specification V1.1a
- Support full DisplayPort link training
- Compliant with DVI 1.1 specification up to 1.65Gbps
- ESD protect: Human Body Mode at 8kv, Machine Mode at 400v, and Charged Device Mode at 2kv
- PC: VGA, SVGA, XGA, SXGA, and UXGA
- HDTV: 480i, 576i, 480p, 576p, 1080i and 1080p
- Standby mode current: 64uA, RoHS
- Length = 100mm



• **CVT01-03CA0203:** DisplayPort-to-HDMI Cable - 100mm

Features:

- Compliant with DisplayPort Interoperability specification V1.1a
- Support full DisplayPort link training
- Compliant with HDMI 1.3a specification up to 2.25Gbps
- ESD protect: Human Body Mode at 8kv, Machine Mode at 400v, and Charged Device Mode at 2kv
- PC: VGA, SVGA, XGA, SXGA, and UXGA
- HDTV: 480i, 576i, 480p, 576p, 1080i and 1080p
- Standby mode current: 64uA, RoHS
- Length = 100mm



• **CVT01-05CA0203:** DisplayPort-to-VGA Cable - 100mm

Features:

- DisplayPort 1.1a compliant receiver offering 1.62 and 2.7Gbps over 4 lanes
- Support full DisplayPort link training
- Video resolution up 1920 X 1200 X 60Hz
- ESD protect: Human Body Mode at 8kv, Machine Mode at 400v, and Charged Device Mode at 2kv
- PC: VGA, XGA, SVGA, SXGA, UXGA and WUXGA, RoHS
- Length = 100mm





Clever Little Box

• Low Profile VGA Cables

These Low Profile VGA cables are unobtrusive and attractively designed. Ideal for use in highly visible areas or in racks where space may be limited.

Male-to-Male Models:

Model:	Description
LPVGA-M/M-1.0M	1 metre
LPVGA-M/M-3.0M	3 metres
LPVGA-M/M-5.0M	5 metres
LPVGA-M/M-10.0M	10 metres
LPVGA-M/M-15.0M	15 metres
LPVGA-M/M-20.0M	20 metres

Male-to-Female Models:

Model:	Description
LPVGA-M/F-1.0M	1 metre
LPVGA-M/F-3.0M	3 metres
LPVGA-M/F-5.0M	5 metres
LPVGA-M/F-10.0M	10 metres
LPVGA-M/F-15.0M	15 metres
LPVGA-M/F-20.0M	20 metres



Low-profile VGA Moulding compared to standard size VGA moulding



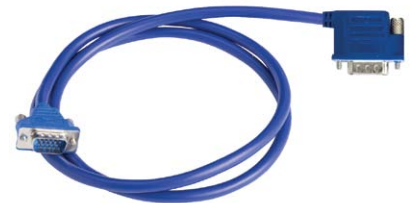
• Right-angle to Low Profile VGA Cables

15 way Male-to-Male VGA cables featuring low profile VGA connector at one end and right-angle VGA at the other.

Models:

Model:	Description
LPVGA-RA-1.0M	1 metre
LPVGA-RA-3.0M	3 metres
LPVGA-RA-5.0M	5 metres
LPVGA-RA-10.0M	10 metres

Right-angle to low-profile VGA Connectors



• Easy-Install VGA Cables

Easy-Install Male VGA-to-Ferrule Free ends.

Ideal for use with our range of AV Wall Faceplates or Solderless VGA modules, these cables allow the VGA cable to be routed through tight spaces/conduit and then quickly terminated at the faceplate without the need to solder, helping to dramatically reduce installation times. The cables consist of 3 coax cores, 5 signal wires plus a screen wire.

Models:

Model:	Description
VGA-FRL-1.0M	1 metre
VGA-FRL-5.0M	5 metres
VGA-FRL-10.0M	10 metres
VGA-FRL-15.0M	15 metres
VGA-FRL-20.0M	20 metres
VGA-FRL-30.0M	30 metres
VGA-FRL-50.0M	50 metres



www.cie-group.com

CIE-Group Widdowson Close Blenheim Ind Est Bulwell Nottingham NG6 8WB England
T: +44(0)115 9770075 F: +44(0)115 9770081 E: info@cie-group.com W: www.cie-group.com


A better way to buy AV



Clever Little Box

• Premier Grade VGA Cables (Fully wired with all 15 pins)

Male-to-Male and Male-to-Female Premier Grade VGA Cables.

Utilising high quality, high performance cable, these premier grade VGA cables are suitable for use in the most demanding of applications. Fully wired with all 15 pins connected.



Models:

Model:	Description
SVGAPREM2.0M/M	2 metres
SVGAPREM10.0M/M	10 metres
SVGAPREM15.0M/M	15 metres
SVGAPREM20.0M/M	20 metres
SVGAPREM30.0M/M	30 metres
SVGAPREM50.0M/M	50 metres
SVGAPREM0.5M/F	0.5 metres
SVGAPREM2.0M/F	2 metres

90° Male-to-Female VGA Adaptor: VGA-M-F90



• Low Smoke, Zero Halogen Premium VGA Cables

Features:

- Cable Assembly Type:VGA
- Connector Type A:VGA Plug
- Connector Type B:VGA Plug

Models:

Model:	Description
LSZH-VGA-1M	Low Smoke, Zero Halogen Premier VGA Cable - 1m male to male
LSZH-VGA-3M	Low Smoke, Zero Halogen Premier VGA Cable - 3m male to male
LSZH-VGA-5M	Low Smoke, Zero Halogen Premier VGA Cable - 5m male to male
LSZH-VGA-10M	Low Smoke, Zero Halogen Premier VGA Cable - 10m male to male
LSZH-VGA-15M	Low Smoke, Zero Halogen Premier VGA Cable - 15m male to male
LSZH-VGA-20M	Low Smoke, Zero Halogen Premier VGA Cable - 20m male to male



www.cie-group.com

CIE-Group Widdowson Close Blenheim Ind Est Bulwell Nottingham NG6 8WB England
T: +44(0)115 9770075 F: +44(0)115 9770081 E: info@cie-group.com W: www.cie-group.com


A better way to buy AV

The following cables enable the DataBay AVE-300 Series VGA Transmitters and Receivers (seen on page 289) to be converted to transmit Component Video or Composite Video.

Component Video Cables:

- **HD15F-YCBCR70:** Component Video Source Cable

Comprising of a high density 15 way female 'D' type connector to 5 x RCA (Phono) plugs. Cable length 0.7m. This cable is used in conjunction with the 'monitor cable' shown below.

The RCA connectors are used to connect to the source player in the following configuration:



Plug Colour	Cable Colour	Player Connection
Red	Red	Component Video: Red Connector
Green	Green	Component Video: Green Connector
Blue	Blue	Component Video: Blue Connector
White	Black	Audio: Left
Red	Black	Audio: Right

The 'D' type connector is then connected to the VGA input port of an AVE-300 Series Transmitter.

- **HD15M-YCBCR180:** Component Video Monitor Cable

Comprising of a high density 15 way female 'D' type connector to 5 x RCA (Phono) plugs. Cable length 1.8m. This cable is used in conjunction with the 'source cable' shown above.

The RCA connectors are used to connect to the monitor in the following configuration:



Plug Colour	Cable Colour	Monitor Connection
Red	Red	Component Video: Red Connector
Green	Green	Component Video: Green Connector
Blue	Blue	Component Video: Blue Connector
White	Black	Audio In: Left
Red	Black	Audio In: Right

The 'D' type connector is then connected to the VGA output port of an AVE-300 Series Receiver.

The 3.5mm plug is connected to the audio output port of the AVE-300 Series Receiver.

Composite Video Cables:

The following cables enable the AVE-300 Series VGA Transmitters and Receivers (seen on page 289) to be converted to transmit Component Video or Composite Video.

- ### HD15F-S3RCA70: Composite Video Source Cable

Comprising of a high density 15 way female 'D' type connector to 3 x RCA (Phono) plugs and an S-Video Mini-Din plug. Cable length 0.7m. This cable is used in conjunction with the 'monitor cable' shown below.

The RCA connectors are used to connect to the source player in the following configuration:

Plug Colour	Cable Colour	Player Connection
Yellow	Black	Composite Video Out
White	Black	Audio Out: Left
Red	Black	Audio Out: Right

Alternatively, the S-Video Mini-Din plug could be used in place of the Yellow RCA plug.

The 'D' type connector is then connected to the VGA input port of an AVE-300 Series Transmitter.



- ### HD15M-S3RCA180: Composite Video Monitor Cable

Comprising of a high density 15 way male 'D' type connector and 3.5mm plug to 3 x RCA (Phono) plugs and an S-Video Mini-Din plug. Cable length 1.8m. This cable is used in conjunction with the 'source cable' shown above.

The RCA connectors are used to connect to the monitor in the following configuration:

Plug Colour	Cable Colour	Function
Yellow	Black	Composite Video In
White	Black	Audio In: Left
Red	Black	Audio In: Right

Note: If the video source is via S-Video then replace the Yellow RCA connector with the S-Video plug.

The 'D' type connector is then connected the VGA output port of an AVE-300 Series Receiver.

The 3.5mm plug is connected to the audio output port of the AVE-300 Series Receiver.





- **DVI-DVI 2M:** 2 metre DVI-to-DVI Cable
- **DVI-DVI 5M:** 5 metre DVI-to-DVI Cable



- **DVI-A to VGA M/M 2M:** 2 metre DVI-to-VGA Cable

Used to interconnect DVI-A and 15-way High Density VGA connectors.
The cable has Male-to-Male orientation and is 2 m in length.



- **DVI to VGA F/M Adaptor:** DVI Female to VGA Male Adaptor
- **DVI to VGA M/F Adaptor:** DVI Male to VGA Female Adaptor





Fibre Optic Cables

A complete range of pre-terminated, multimode Fibre Optic Cables.

Model:	Description:
FB-001-H	LC-LC: 50/125 MMD fibre 0.5m orange
FB-001	LC-LC: 50/125 MMD fibre 1m orange
FB-002	LC-LC: 50/125 MMD fibre 2m orange
FB-003	LC-LC: 50/125 MMD fibre 3m orange
FB-004	LC-LC: 50/125 MMD fibre 5m orange
FB-005	LC-LC: 50/125 MMD fibre 10m orange
FB-031	LC-LC: 50/125 MMD fibre 15m orange



Model:	Description:
FB-006-H	LC-ST: 50/125 MMD fibre 0.5M orange
FB-006	LC-ST: 50/125 MMD fibre 1m orange
FB-007	LC-ST: 50/125 MMD fibre 2m orange
FB-008	LC-ST: 50/125 MMD fibre 3m orange
FB-009	LC-ST: 50/125 MMD Fibre 5m Orange
FB-010	LC-ST: 50/125 MMD Fibre 10m Orange
FB-033	LC-ST: 50/125 MMD Fibre 15m Orange



Model:	Description:
FB-011	LC-SC: 50/125 MMD Fibre 1m Orange
FB-012	LC-SC: 50/125 MMD Fibre 2m Orange
FB-013	LC-SC: 50/125 MMD Fibre 3m Orange
FB-014	LC-SC: 50/125 MMD Fibre 5m Orange
FB-015	LC-SC: 50/125 MMD Fibre 10m Orange
FB-032	LC-SC: 50/125 MMD Fibre 15m Orange



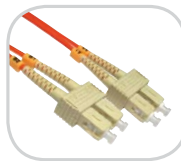
Model:	Description:
FB-016	ST-ST: 50/125 MMD Fibre 1m Orange
FB-017	ST-ST: 50/125 MMD Fibre 2m Orange
FB-018	ST-ST: 50/125 MMD Fibre 3m Orange
FB-019	ST-ST: 50/125 MMD Fibre 5m Orange
FB-020	ST-ST: 50/125 MMD Fibre 10m Orange



Model:	Description:
FB-021	ST-SC: 50/125 MMD Fibre 1m Orange
FB-022	ST-SC: 50/125 MMD Fibre 2m Orange
FB-023	ST-SC: 50/125 MMD Fibre 3m Orange
FB-024	ST-SC: 50/125 MMD Fibre 5m Orange
FB-025	ST-SC: 50/125 MMD Fibre 10m Orange



Model:	Description:
FB-026	SC-SC: 50/125 MMD Fibre 1m Orange
FB-027	SC-SC: 50/125 MMD Fibre 2m Orange
FB-028	SC-SC: 50/125 MMD Fibre 3m Orange
FB-029	SC-SC: 50/125 MMD Fibre 5m Orange
FB-030	SC-SC: 50/125 MMD Fibre 10m Orange



Model:	Description:
OM3-001	LC-LC: 50/125 MMD Fibre 1m Orange
OM3-002	LC-LC: 50/125 MMD Fibre 2m Orange
OM3-003	LC-LC: 50/125 MMD Fibre 3m Orange
OM3-005	LC-LC: 50/125 MMD Fibre 5m Orange



Model:	Description:
OM3-006	LC-ST: 50/125 MMD Fibre 1m Orange
OM3-007	LC-ST: 50/125 MMD Fibre 2m Orange
OM3-008	LC-ST: 50/125 MMD Fibre 3m Orange
OM3-009	LC-ST: 50/125 MMD Fibre 5m Orange



Model:	Description:
OM3-011	LC-SC: 50/125 MMD Fibre 1m Orange
OM3-012	LC-SC: 50/125 MMD Fibre 2m Orange
OM3-013	LC-SC: 50/125 MMD Fibre 3m Orange
OM3-015	LC-SC: 50/125 MMD Fibre 5m Orange



www.cie-group.com



Fibre Optic Cables (contd.)

Model:	Description;
FB-101	ST-ST: 62.5/125 MMD Fibre 1m Grey
FB-102	ST-ST: 62.5/125 MMD Fibre 2m Grey
FB-103	ST-ST: 62.5/125 MMD Fibre 3m Grey
FB-105	ST-ST: 62.5/125 MMD Fibre 5m Grey



Model:	Description;
FB-201	ST-SC: 62.5/125 MMD Fibre 1m Grey
FB-202	ST-SC: 62.5/125 MMD Fibre 2m Grey
FB-203	ST-SC: 62.5/125 MMD Fibre 3m Grey
FB-205	ST-SC: 62.5/125 MMD Fibre 5m Grey
FB-210	ST-SC: 62.5/125 MMD Fibre 10m Grey



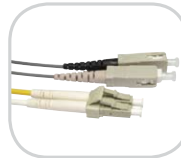
Model:	Description;
FB-301	SC-SC: 62.5/125 MMD Fibre 1m Grey
FB-302	SC-SC: 62.5/125 MMD Fibre 2m Grey
FB-303	SC-SC: 62.5/125 MMD Fibre 3m Grey
FB-305	SC-SC: 62.5/125 MMD Fibre 5m Grey
FB-310	SC-SC: 62.5/125 MMD Fibre 10m Grey



Model:	Description;
FB-400	LC-LC: 62.5/125 MMD Fibre 0.5m Grey
FB-401	LC-LC: 62.5/125 MMD Fibre 1m Grey
FB-402	LC-LC: 62.5/125 MMD Fibre 2m Grey
FB-403	LC-LC: 62.5/125 MMD Fibre 3m Grey
FB-405	LC-LC: 62.5/125 MMD Fibre 5m Grey
FB-410	LC-LC: 62.5/125 MMD Fibre 10m Grey
FB-415	LC-LC: 62.5/125 MMD Fibre 15m Grey
FB-420	LC-LC: 62.5/125 MMD Fibre 20m Grey



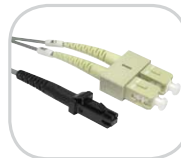
Model:	Description;
FB-500	LC-SC: 62.5/125 MMD Fibre 0.5m Grey
FB-501	LC-SC: 62.5/125 MMD Fibre 1m Grey
FB-502	LC-SC: 62.5/125 MMD Fibre 2m Grey
FB-503	LC-SC: 62.5/125 MMD Fibre 3m Grey
FB-505	LC-SC: 62.5/125 MMD Fibre 5m Grey
FB-510	LC-SC: 62.5/125 MMD Fibre 10m Grey
FB-515	LC-SC: 62.5/125 MMD Fibre 15m Grey



Model:	Description;
FB-600	LC-ST: 62.5/125 MMD Fibre 0.5m Grey
FB-601	LC-ST: 62.5/125 MMD Fibre 1m Grey
FB-602	LC-ST: 62.5/125 MMD Fibre 2m Grey
FB-603	LC-ST: 62.5/125 MMD Fibre 3m Grey
FB-605	LC-ST: 62.5/125 MMD Fibre 5m Grey
FB-610	LC-ST: 62.5/125 MMD Fibre 10m Grey
FB-615	LC-ST: 62.5/125 MMD Fibre 15m Grey



Model:	Description;
FB-701	MJ-SC: 62.5/125 MMD Fibre 1m Grey
FB-702	MJ-SC: 62.5/125 MMD Fibre 2m Grey
FB-703	MJ-SC: 62.5/125 MMD Fibre 3m Grey
FB-705	MJ-SC: 62.5/125 MMD Fibre 5m Grey



Model:	Description;
FB-801	MJ-ST: 62.5/125 MMD Fibre 1m Grey
FB-802	MJ-ST: 62.5/125 MMD Fibre 2m Grey
FB-805	MJ-ST: 62.5/125 MMD Fibre 5m Grey





Clever Little Box

● **Premier Toslink Cables**

Features:

- Toslink Male/Toslink Male
- Gold plated Chromium shell
- OD 7.0Mm/PVC yellow color
- Braided Oversheath

Models:

Model:	Description
STA-F001 1M	Premier Toslink Male-to-Male Cables-1 metre
STA-F001 3M	Premier Toslink Male-to-Male Cables-3metres
STA-F001 5M	Premier Toslink Male-to-Male Cables-5 metres
STA-F001 10M	Premier Toslink Male-to-Male Cables-10 metres



● **STA-TSPL0102: 1-to-2 Toslink Splitter Mutual Function**

Optical digital Splitter, 1 In/2 Out.



● **STA-TSL001: Toslink to 3.5mm Adaptor**

Toslink to 3.5mm jack Adaptor.





Clever Little Box

• Scart Leads

A range of high grade, 21 pin fully-wired scart leads for connection of AV equipment to TVs and display screens:

Models:

Model:	Description
2SSP-01	1.5m 21 pin black Scart cable, M-M, Gold on coax cable
2SSP-03	3m 21 pin black Scart cable, M-M, Gold on coax cable
2SSP-05	5m 21 pin black Scart cable, M-M, Gold on coax cable
2SSP-10	10m 21 pin black Scart cable, M-M, Gold on coax cable
1SS-01	1.5m Scart, M-M, Black nickel cable
1SS-03	3m Scart, M-M, Black nickel cable
1SS-05	5m Scart, M-M, Black nickel cable
1SS-10	10m Scart, M-M, Black nickel cable



2SSP scart lead



1SS scart lead



RCA (Phono) Pre-Made Cables

A range of RCA cables ideal for use in most AV installations and particularly suitable for use with our range of faceplates shown on pages 346 ~ 351.

The range includes plug-to-plug cables in 1, 2 and 3 way versions, as well as plug-to-free end cables, ready to be terminated on the rear of a faceplate.



RCA Plug-to-RCA Plug Cables Models:

Model:	Description	
2XRCA-2XRCA0.75M	2 x RCA to 2 x RCA, Red/White	0.75 metres
2XRCA-2XRCA15M	2 x RCA to 2 x RCA, Red/Black	15 metres
3XRCA-3XRCA1.5M	3 x RCA plugs to 3 x RCA plugs, Gold, Red, Yellow, Black	1.5 metres
3XRCA-3XRCA3.0M	3 x RCA plugs to 3 x RCA plugs, Gold, Red, Yellow, Black	3 metres
3XRCA-3XRCA5.0M	3 x RCA plugs to 3 x RCA plugs, Gold, Red, Yellow, Black	5 metres
3XRCA-3XRCA10M	3 x RCA plugs to 3 x RCA plugs, Gold, Red, Yellow, Black	10 metres
3XRCA-3XRCA15M	3 x RCA plugs to 3 x RCA plugs, Gold, Red, Yellow, Black	15 metres
3XRCA-RYW0.75M	3 x RCA plugs to 3 x RCA plugs, Red, Yellow, White	0.75 metres
3XRCA-RYW1.5M	3 x RCA plugs to 3 x RCA plugs, Red, Yellow, White	1.5 metres
3XRCA-RYW2.0M	3 x RCA plugs to 3 x RCA plugs, Red, Yellow, White	2 metres
3XRCALEAD10MRYW	3 x RCA plugs to 3 x RCA plugs, Red, Yellow, White	10 metres
3XRCALEAD15MRYW	3 x RCA plugs to 3 x RCA plugs, Red, Yellow, White	15 metres

Plug-to-Free End RCA Cables Models:

Model:	Description	
2XRCA-FE10MRDWH	2 x RCA (1 red, 1 white) to Free End	10 metres
2XRCA-FE15MRDWH	2 x RCA (1 red, 1 white) to Free End	15 metres
RCAYELW-FREE10M	1 x RCA (yellow) to Free End	10 metres
RCAYELW-FREE15M	1 x RCA (yellow) to Free End	15 metres

3.5mm Pre-Made Cables

A range of 3.5mm plug cables, ideal for use with most AV installations and particularly suitable with our range of quality faceplates.

Normally used to carry PC/MP3 audio, the range includes plug-to-plug ends, plug-to-ferrule ends and plug-to-free end cables, ready to be terminated on the rear of a faceplate.

Models:

Model:	Description
3.5mm Stereo Plug-to-plug Lead	
3.5STRLEAD0.75M	0.75 metres
3.5STRLEAD3.0M	3 metres
3.5STRLEAD5.0M	5 metres
3.5STRLEAD10M	10 metres
3.5STRLEAD15M	15 metres
3.5mm Stereo Plug-to-bootlace Ferrule Lead	
3.5STRLD-FRL10M	10 metres
3.5STRLD-FRL15M	15 metres



35HR07884X: 3.5mm Stereo to free end Lead

High quality 3.5mm Stereo Plug-to-Free End 2 metre Lead

35HR07235X: 3.5mm Stereo Plug to Plug Lead

High quality 3.5mm Stereo Plug-to-Plug 1.8 metre Lead



• Premier USB 3.0 Cables

Marked USB 3.0, Connector USB 3.0 A Type Male, Gold plated, 15µ contacts, Shell nickel plated, Moulded blue PVC.

Models:

Model:	Description
PREM-USB3.0AM-AM1.0M	1 metre USB Male-to-Male
PREM-USB3.0AM-AM3.0M	3 metres USB Male-to-Male
PREM-USB3.0AM-AM5.0M	5 metres USB Male-to-Male



• Premier USB 3.0 Cables

Marked USB 3.0, Connector USB 3.0 A Type Male + USB 3.0 B Type Female, Solder type, Blue insulation, Gold plated, 15µ contacts, Shell nickel plated, Moulded blue PVC.

Models:

Model:	Description
PREM-USB3.0AM-AF1.0M	1 metre USB Male-to-Female
PREM-USB3.0AM-AF3.0M	3 metres USB Male-to-Female
PREM-USB3.0AM-AF5.0M	5 metres USB Male-to-Female



• Premier USB 3.0 Cables

Marked USB 3.0 A Type Male Blue insulation, Gold plated, 15µ contacts, Shell nickel plated + USB 3.0 B Type Male, solder type, blue insulation Gold plated, 15µ contacts, shell nickel plated, Blue PVC.

Models:

Model:	Description
PREM-USB3.0AF-BF1.0M	1 metre USB Female-to-Female
PREM-USB3.0AF-BF3.0M	3 metres USB Female-to-Female
PREM-USB3.0AF-BF5.0M	5 metres USB Female-to-Female



• Premier USB 3.0 Cables

Marked USB 3.0, Connector USB 3.0 A Type Male + B Type Male, Solder type, Blue insulation, Gold plated, 15µ contacts, Shell nickel plated, Moulded blue PVC.

Models:

Model:	Description
PREM-USB3.0AM-BM1.0M	1 metre USB A Male-to-B Male
PREM-USB3.0AM-BM3.0M	3 metres USB A Male-to-B Male
PREM-USB3.0AM-BM5.0M	5 metres USB A Male-to-B Male





- **USBEXKIT: USB Extender Kit**

Used to simply but effectively extend a USB 1.1 signal beyond the normal 5 metre limit.

Supplied as a transmitter and receiver kit, the two devices are linked via user supplied Cat5e cable up to a maximum of 30 metres.



- **USB-BML-BFMPN3M:**
Interactive Whiteboard USB Cable

USB B panel-mount Male to USB B cable Female, 3 metre cable.





- **STA-USB3A001:** USB 3.0 A Male to A Male Adaptor

Converts a USB A female-ended cable to USB A Male gender.



- **STA-USB3A002:** USB 3.0 A Male to B Male Adaptor

Converts a USB A female-ended cable to USB B Male (or vice versa).



- **STA-USB3A003:** USB 3.0 A Male to A Female Adaptor

USB A cable coupler.



- **STA-USB3A003B:** USB 3.0 A Female to B Male Adaptor

Converts a USB A male-ended cable to USB B male gender.

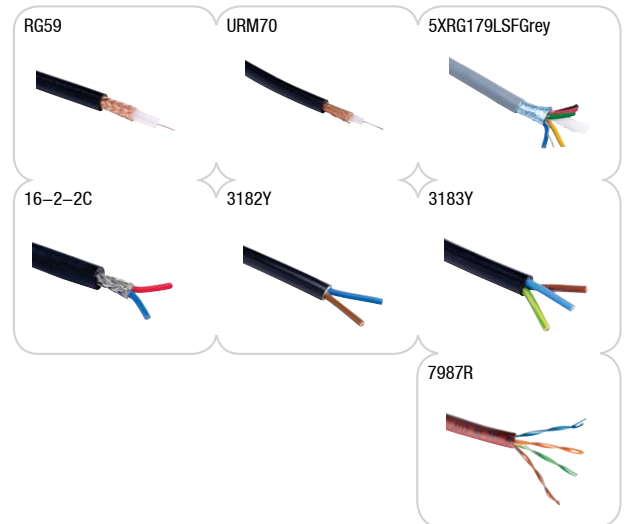


• Installation Cable Reels

We stock a wide range of installation cables ideal for use in professional AV and PA installations, including the high quality WEST PENN WIRE range from the USA, as well as a variety of other cables commonly used in AV installation.

Part Numbers:

Model:	Description	
RG59	RG59/U Co-axial Cable, black sheath	100m reel
URM70	URM 70 75W Co-axial Cable, black sheath	100m reel
5XRG179LSFGrey	5 Core RG179 Co-axial Cable: low smoke fume, Grey sheath	100m reel
16-2-2C	16/0.2mm 2 Core screened to DEF-STAN 61-12, black sheath	100m reel
3182Y	2 Core cable, 0.75mm ² (24/0.2mm) 6A rated, black sheath	100m reel
3183Y	3 Core cable, 0.75mm ² (24/0.2mm) 6A rated, black sheath	100m reel
224-1000*	West Penn Twin Twisted Speaker Cable (approx 0.9mm ²)	305m box
225-1000*	West Penn Twin Twisted Speaker Cable (approx 1.25mm ²)	305m box
226-1000*	West Penn Twin Twisted Speaker Cable (approx 2.0mm ²)	305m box
291-1000*	West Penn Twisted Pair Shielded Microphone Cable (approx 0.5mm ²)	305m box
293-1000*	West Penn Twisted Pair Shielded Microphone Cable (approx 1mm ²)	305m box
357-1000*	West Penn 2 x Twisted Pair Mic Cable (approx 0.35mm ²)	305m box
7987R	Belden Cat-X Low Skew Cable (ideal for use with Databay and CYP product range)	305m box





• SpaceGAIN Cat5e UTP Angled Cables

SpaceGAIN CAT5e UTP Angled Cables with Moulded Boots. CAT5e UTP 90° angled cables perfect for tight places like cabinets.

Features:

- Patch cables with 90° angled connectors
- 24AWG, straight-pinned T568B moulded boots
- Different colours for link identification at a glance
- Choose from down, up, left or right angled versions
- Meets or exceeds CAT5e specifications
- Avoids excessive bends and reduces stress on the cable
- Cables extend straight up, down or sideways
- Tab faces up, down, left or right, depending on the cable

• SpaceGAIN 90° ~ 90° Down:

Part Number	Description	Cable Length	Colour
EVNSL21E-0001-90DD	Cat5e Angled Cable: 90° Down ~ 90° Down	0.3m	Blue
EVNSL21E-0003-90DD	Cat5e Angled Cable: 90° Down ~ 90° Down	0.9m	Blue
EVNSL21E-0006-90DD	Cat5e Angled Cable: 90° Down ~ 90° Down	1.8m	Blue
EVNSL21E-0010-90DD	Cat5e Angled Cable: 90° Down ~ 90° Down	3.0m	Blue
EVNSL21E-0015-90DD	Cat5e Angled Cable: 90° Down ~ 90° Down	4.5m	Blue
EVNSL21ES-0001-90DD	Cat5e Angled Cable: 90° Down ~ 90° Down	0.3m	Blue
EVNSL21ES-0003-90DD	Cat5e Angled Cable: 90° Down ~ 90° Down	0.9m	Blue
EVNSL21ES-0006-90DD	Cat5e Angled Cable: 90° Down ~ 90° Down	1.8m	Blue
EVNSL21ES-0010-90DD	Cat5e Angled Cable: 90° Down ~ 90° Down	3.0m	Blue
EVNSL21ES-0015-90DD	Cat5e Angled Cable: 90° Down ~ 90° Down	4.5m	Blue
EVNSL22ES-0001-90DD	Cat5e Angled Cable: 90° Down ~ 90° Down	0.3m	Green
EVNSL22ES-0003-90DD	Cat5e Angled Cable: 90° Down ~ 90° Down	0.9m	Green
EVNSL22ES-0006-90DD	Cat5e Angled Cable: 90° Down ~ 90° Down	1.8m	Green
EVNSL22ES-0010-90DD	Cat5e Angled Cable: 90° Down ~ 90° Down	3.0m	Green
EVNSL22ES-0015-90DD	Cat5e Angled Cable: 90° Down ~ 90° Down	4.5m	Green
EVNSL23E-0001-90DD	Cat5e Angled Cable: 90° Down ~ 90° Down	0.3m	Red
EVNSL23E-0003-90DD	Cat5e Angled Cable: 90° Down ~ 90° Down	0.9m	Red
EVNSL23E-0006-90DD	Cat5e Angled Cable: 90° Down ~ 90° Down	1.8m	Red
EVNSL23E-0010-90DD	Cat5e Angled Cable: 90° Down ~ 90° Down	3.0m	Red
EVNSL23E-0015-90DD	Cat5e Angled Cable: 90° Down ~ 90° Down	4.5m	Red
EVNSL23ES-0001-90DD	Cat5e Angled Cable: 90° Down ~ 90° Down	0.3m	Red
EVNSL23ES-0003-90DD	Cat5e Angled Cable: 90° Down ~ 90° Down	0.9m	Red
EVNSL23ES-0006-90DD	Cat5e Angled Cable: 90° Down ~ 90° Down	1.8m	Red
EVNSL23ES-0010-90DD	Cat5e Angled Cable: 90° Down ~ 90° Down	3.0m	Red
EVNSL23ES-0015-90DD	Cat5e Angled Cable: 90° Down ~ 90° Down	4.5m	Red
EVNSL24E-0001-90DD	Cat5e Angled Cable: 90° Down ~ 90° Down	0.3m	Yellow
EVNSL24E-0003-90DD	Cat5e Angled Cable: 90° Down ~ 90° Down	0.9m	Yellow
EVNSL24E-0006-90DD	Cat5e Angled Cable: 90° Down ~ 90° Down	1.8m	Yellow
EVNSL24E-0010-90DD	Cat5e Angled Cable: 90° Down ~ 90° Down	3.0m	Yellow
EVNSL24E-0015-90DD	Cat5e Angled Cable: 90° Down ~ 90° Down	4.5m	Yellow
EVNSL24ES-0001-90DD	Cat5e Angled Cable: 90° Down ~ 90° Down	0.3m	Yellow
EVNSL24ES-0003-90DD	Cat5e Angled Cable: 90° Down ~ 90° Down	0.9m	Yellow
EVNSL24ES-0006-90DD	Cat5e Angled Cable: 90° Down ~ 90° Down	1.8m	Yellow
EVNSL24ES-0010-90DD	Cat5e Angled Cable: 90° Down ~ 90° Down	3.0m	Yellow
EVNSL24ES-0015-90DD	Cat5e Angled Cable: 90° Down ~ 90° Down	4.5m	Yellow
EVNSL27E-0001-90DD	Cat5e Angled Cable: 90° Down ~ 90° Down	0.3m	Black
EVNSL27E-0003-90DD	Cat5e Angled Cable: 90° Down ~ 90° Down	0.9m	Black
EVNSL27E-0006-90DD	Cat5e Angled Cable: 90° Down ~ 90° Down	1.8m	Black
EVNSL27E-0010-90DD	Cat5e Angled Cable: 90° Down ~ 90° Down	3.0m	Black
EVNSL27E-0015-90DD	Cat5e Angled Cable: 90° Down ~ 90° Down	4.5m	Black
EVNSL27ES-0001-90DD	Cat5e Angled Cable: 90° Down ~ 90° Down	0.3m	Black
EVNSL27ES-0003-90DD	Cat5e Angled Cable: 90° Down ~ 90° Down	0.9m	Black
EVNSL27ES-0006-90DD	Cat5e Angled Cable: 90° Down ~ 90° Down	1.8m	Black
EVNSL27ES-0010-90DD	Cat5e Angled Cable: 90° Down ~ 90° Down	3.0m	Black
EVNSL27ES-0015-90DD	Cat5e Angled Cable: 90° Down ~ 90° Down	4.5m	Black





Clever Little Box

• **SpaceGAIN 90° ~ 90° Up:**

Part Number	Description	Cable Length	Colour
EVNSL21E-0001-90DU	Cat5e Angled Cable: 90° Down ~ 90° Up	0.3m	Blue
EVNSL21E-0003-90DU	Cat5e Angled Cable: 90° Down ~ 90° Up	0.9m	Blue
EVNSL21E-0006-90DU	Cat5e Angled Cable: 90° Down ~ 90° Up	1.8m	Blue
EVNSL21E-0010-90DU	Cat5e Angled Cable: 90° Down ~ 90° Up	3.0m	Blue
EVNSL21E-0015-90DU	Cat5e Angled Cable: 90° Down ~ 90° Up	4.5m	Blue
EVNSL21ES-0001-90DU	Cat5e Angled Cable: 90° Down ~ 90° Up	0.3m	Blue
EVNSL21ES-0003-90DU	Cat5e Angled Cable: 90° Down ~ 90° Up	0.9m	Blue
EVNSL21ES-0006-90DU	Cat5e Angled Cable: 90° Down ~ 90° Up	1.8m	Blue
EVNSL21ES-0010-90DU	Cat5e Angled Cable: 90° Down ~ 90° Up	3.0m	Blue
EVNSL21ES-0015-90DU	Cat5e Angled Cable: 90° Down ~ 90° Up	4.5m	Blue
EVNSL22ES-0001-90DU	Cat5e Angled Cable: 90° Down ~ 90° Up	0.3m	Green
EVNSL22ES-0003-90DU	Cat5e Angled Cable: 90° Down ~ 90° Up	0.9m	Green
EVNSL22ES-0006-90DU	Cat5e Angled Cable: 90° Down ~ 90° Up	1.8m	Green
EVNSL22ES-0010-90DU	Cat5e Angled Cable: 90° Down ~ 90° Up	3.0m	Green
EVNSL22ES-0015-90DU	Cat5e Angled Cable: 90° Down ~ 90° Up	4.5m	Green
EVNSL23E-0001-90DU	Cat5e Angled Cable: 90° Down ~ 90° Up	0.3m	Red
EVNSL23E-0003-90DU	Cat5e Angled Cable: 90° Down ~ 90° Up	0.9m	Red
EVNSL23E-0006-90DU	Cat5e Angled Cable: 90° Down ~ 90° Up	1.8m	Red
EVNSL23E-0010-90DU	Cat5e Angled Cable: 90° Down ~ 90° Up	3.0m	Red
EVNSL23E-0015-90DU	Cat5e Angled Cable: 90° Down ~ 90° Up	4.5m	Red
EVNSL23ES-0001-90DU	Cat5e Angled Cable: 90° Down ~ 90° Up	0.3m	Red
EVNSL23ES-0003-90DU	Cat5e Angled Cable: 90° Down ~ 90° Up	0.9m	Red
EVNSL23ES-0006-90DU	Cat5e Angled Cable: 90° Down ~ 90° Up	1.8m	Red
EVNSL23ES-0010-90DU	Cat5e Angled Cable: 90° Down ~ 90° Up	3.0m	Red
EVNSL23ES-0015-90DU	Cat5e Angled Cable: 90° Down ~ 90° Up	4.5m	Red
EVNSL24E-0001-90DU	Cat5e Angled Cable: 90° Down ~ 90° Up	0.3m	Yellow
EVNSL24E-0003-90DU	Cat5e Angled Cable: 90° Down ~ 90° Up	0.9m	Yellow
EVNSL24E-0006-90DU	Cat5e Angled Cable: 90° Down ~ 90° Up	1.8m	Yellow
EVNSL24E-0010-90DU	Cat5e Angled Cable: 90° Down ~ 90° Up	3.0m	Yellow
EVNSL24E-0015-90DU	Cat5e Angled Cable: 90° Down ~ 90° Up	4.5m	Yellow
EVNSL24ES-0001-90DU	Cat5e Angled Cable: 90° Down ~ 90° Up	0.3m	Yellow
EVNSL24ES-0003-90DU	Cat5e Angled Cable: 90° Down ~ 90° Up	0.9m	Yellow
EVNSL24ES-0006-90DU	Cat5e Angled Cable: 90° Down ~ 90° Up	1.8m	Yellow
EVNSL24ES-0010-90DU	Cat5e Angled Cable: 90° Down ~ 90° Up	3.0m	Yellow
EVNSL24ES-0015-90DU	Cat5e Angled Cable: 90° Down ~ 90° Up	4.5m	Yellow
EVNSL27E-0001-90DU	Cat5e Angled Cable: 90° Down ~ 90° Up	0.3m	Black
EVNSL27E-0003-90DU	Cat5e Angled Cable: 90° Down ~ 90° Up	0.9m	Black
EVNSL27E-0006-90DU	Cat5e Angled Cable: 90° Down ~ 90° Up	1.8m	Black
EVNSL27E-0010-90DU	Cat5e Angled Cable: 90° Down ~ 90° Up	3.0m	Black
EVNSL27E-0015-90DU	Cat5e Angled Cable: 90° Down ~ 90° Up	4.5m	Black
EVNSL27ES-0001-90DU	Cat5e Angled Cable: 90° Down ~ 90° Up	0.3m	Black
EVNSL27ES-0003-90DU	Cat5e Angled Cable: 90° Down ~ 90° Up	0.9m	Black
EVNSL27ES-0006-90DU	Cat5e Angled Cable: 90° Down ~ 90° Up	1.8m	Black
EVNSL27ES-0010-90DU	Cat5e Angled Cable: 90° Down ~ 90° Up	3.0m	Black
EVNSL27ES-0015-90DU	Cat5e Angled Cable: 90° Down ~ 90° Up	4.5m	Black



• **SpaceGAIN 90° Right ~ 180° Straight:**

Part Number	Description	Cable Length	Colour
EVNSL21E-0003-90RS	Cat5e Angled Cable: 90° Right ~ 180° Straight	0.9m	Blue
EVNSL21E-0006-90RS	Cat5e Angled Cable: 90° Right ~ 180° Straight	1.8m	Blue
EVNSL21E-0010-90RS	Cat5e Angled Cable: 90° Right ~ 180° Straight	3.0m	Blue
EVNSL27E-0003-90RS	Cat5e Angled Cable: 90° Right ~ 180° Straight	0.9m	Black
EVNSL27E-0006-90RS	Cat5e Angled Cable: 90° Right ~ 180° Straight	1.8m	Black
EVNSL27E-0010-90RS	Cat5e Angled Cable: 90° Right ~ 180° Straight	3.0m	Black





Clever Little Box

• **SpaceGAIN 90° Down ~ 180° Straight:**

Part Number	Description	Cable Length	Colour
EVNSL21E-0001-90DS	Cat5e Angled Cable: 90° Down ~ 180° Straight	0.3m	Blue
EVNSL21E-0003-90DS	Cat5e Angled Cable: 90° Down ~ 180° Straight	0.9m	Blue
EVNSL21E-0006-90DS	Cat5e Angled Cable: 90° Down ~ 180° Straight	1.8m	Blue
EVNSL21E-0010-90DS	Cat5e Angled Cable: 90° Down ~ 180° Straight	3.0m	Blue
EVNSL21E-0015-90DS	Cat5e Angled Cable: 90° Down ~ 180° Straight	4.5m	Blue
EVNSL21ES-0001-90DS	Cat5e Angled Cable: 90° Down ~ 180° Straight	0.3m	Blue
EVNSL21ES-0003-90DS	Cat5e Angled Cable: 90° Down ~ 180° Straight	0.9m	Blue
EVNSL21ES-0006-90DS	Cat5e Angled Cable: 90° Down ~ 180° Straight	1.8m	Blue
EVNSL21ES-0010-90DS	Cat5e Angled Cable: 90° Down ~ 180° Straight	3.0m	Blue
EVNSL21ES-0015-90DS	Cat5e Angled Cable: 90° Down ~ 180° Straight	4.5m	Blue
EVNSL22ES-0001-90DS	Cat5e Angled Cable: 90° Down ~ 180° Straight	0.3m	Green
EVNSL22ES-0003-90DS	Cat5e Angled Cable: 90° Down ~ 180° Straight	0.9m	Green
EVNSL22ES-0006-90DS	Cat5e Angled Cable: 90° Down ~ 180° Straight	1.8m	Green
EVNSL22ES-0010-90DS	Cat5e Angled Cable: 90° Down ~ 180° Straight	3.0m	Green
EVNSL22ES-0015-90DS	Cat5e Angled Cable: 90° Down ~ 180° Straight	4.5m	Green
EVNSL23E-0001-90DS	Cat5e Angled Cable: 90° Down ~ 180° Straight	0.3m	Red
EVNSL23E-0003-90DS	Cat5e Angled Cable: 90° Down ~ 180° Straight	0.9m	Red
EVNSL23E-0006-90DS	Cat5e Angled Cable: 90° Down ~ 180° Straight	1.8m	Red
EVNSL23E-0010-90DS	Cat5e Angled Cable: 90° Down ~ 180° Straight	3.0m	Red
EVNSL23E-0015-90DS	Cat5e Angled Cable: 90° Down ~ 180° Straight	4.5m	Red
EVNSL23ES-0001-90DS	Cat5e Angled Cable: 90° Down ~ 180° Straight	0.3m	Red
EVNSL23ES-0003-90DS	Cat5e Angled Cable: 90° Down ~ 180° Straight	0.9m	Red
EVNSL23ES-0006-90DS	Cat5e Angled Cable: 90° Down ~ 180° Straight	1.8m	Red
EVNSL23ES-0010-90DS	Cat5e Angled Cable: 90° Down ~ 180° Straight	3.0m	Red
EVNSL23ES-0015-90DS	Cat5e Angled Cable: 90° Down ~ 180° Straight	4.5m	Red
EVNSL24E-0001-90DS	Cat5e Angled Cable: 90° Down ~ 180° Straight	0.3m	Yellow
EVNSL24E-0003-90DS	Cat5e Angled Cable: 90° Down ~ 180° Straight	0.9m	Yellow
EVNSL24E-0006-90DS	Cat5e Angled Cable: 90° Down ~ 180° Straight	1.8m	Yellow
EVNSL24E-0010-90DS	Cat5e Angled Cable: 90° Down ~ 180° Straight	3.0m	Yellow
EVNSL24E-0015-90DS	Cat5e Angled Cable: 90° Down ~ 180° Straight	4.5m	Yellow
EVNSL24ES-0001-90DS	Cat5e Angled Cable: 90° Down ~ 180° Straight	0.3m	Yellow
EVNSL24ES-0003-90DS	Cat5e Angled Cable: 90° Down ~ 180° Straight	0.9m	Yellow
EVNSL24ES-0006-90DS	Cat5e Angled Cable: 90° Down ~ 180° Straight	1.8m	Yellow
EVNSL24ES-0010-90DS	Cat5e Angled Cable: 90° Down ~ 180° Straight	3.0m	Yellow
EVNSL24ES-0015-90DS	Cat5e Angled Cable: 90° Down ~ 180° Straight	4.5m	Yellow
EVNSL27E-0001-90DS	Cat5e Angled Cable: 90° Down ~ 180° Straight	0.3m	Black
EVNSL27E-0003-90DS	Cat5e Angled Cable: 90° Down ~ 180° Straight	0.9m	Black
EVNSL27E-0006-90DS	Cat5e Angled Cable: 90° Down ~ 180° Straight	1.8m	Black
EVNSL27E-0010-90DS	Cat5e Angled Cable: 90° Down ~ 180° Straight	3.0m	Black
EVNSL27E-0015-90DS	Cat5e Angled Cable: 90° Down ~ 180° Straight	4.5m	Black
EVNSL27ES-0001-90DS	Cat5e Angled Cable: 90° Down ~ 180° Straight	0.3m	Black
EVNSL27ES-0003-90DS	Cat5e Angled Cable: 90° Down ~ 180° Straight	0.9m	Black
EVNSL27ES-0006-90DS	Cat5e Angled Cable: 90° Down ~ 180° Straight	1.8m	Black
EVNSL27ES-0010-90DS	Cat5e Angled Cable: 90° Down ~ 180° Straight	3.0m	Black
EVNSL27ES-0015-90DS	Cat5e Angled Cable: 90° Down ~ 180° Straight	4.5m	Black



• **SpaceGAIN 90° Left ~ 180° Straight:**

Part Number	Description	Cable Length	Colour
EVNSL21E-0003-90LS	Cat5e Angled Cable: 90° Left ~ 180° Straight	0.9m	Blue
EVNSL21E-0006-90LS	Cat5e Angled Cable: 90° Left ~ 180° Straight	1.8m	Blue
EVNSL21E-0010-90LS	Cat5e Angled Cable: 90° Left ~ 180° Straight	3.0m	Blue
EVNSL27E-0003-90LS	Cat5e Angled Cable: 90° Left ~ 180° Straight	0.9m	Black
EVNSL27E-0006-90LS	Cat5e Angled Cable: 90° Left ~ 180° Straight	1.8m	Black
EVNSL27E-0010-90LS	Cat5e Angled Cable: 90° Left ~ 180° Straight	3.0m	Black



www.cie-group.com

CIE-Group Widdowson Close Blenheim Ind Est Bulwell Nottingham NG6 8WB England
T: +44(0)115 9770075 F: +44(0)115 9770081 E: info@cie-group.com W: www.cie-group.com


A better way to buy AV



- **301013:**
Cat5e Type 1 10/100 Cable Economiser

- **301014:**
Cat5e Type 2 10 Base-T Cable Economiser

Cable economisers enable an additional signal to be transmitted down the unused pairs of Cat5e twisted-pair cable. This enables the instant expansion of an existing system without disrupting the network infrastructure.

(Note: Type 1 sold individually but must be used in pairs).



In-Line Adaptors

Models:

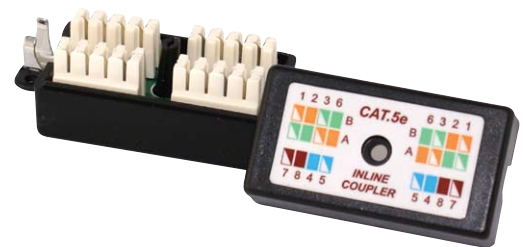
Model:	Description
301001	In-Line RJ45 Straight Wired Cat5e
301002	In-Line RJ45 Roll-Over Cat5e
301003	In-Line RJ45 UTP Cat5e
301004	In-Line RJ45 Half Shielded Cat5e
25247	In-Line RJ45 Fully Shielded Cat5e
301012	In-Line RJ45 UYP Cat5e
1280	In-Line RJ45 Straight Wired Voice



Cat-X Punchdown Couplers

Models:

Model:	Description
301021	Cat5e UTP Punchdown Coupler
301022	Cat5e STP Punchdown Coupler
301023	Cat6 UTP Punchdown Coupler





Clever Little Box

- **1288:** RJ12 T-Piece Adaptor

1 x Male to 2 x Female RJ12 T Piece Adaptor.



- **1289:** RJ45 T-Piece Adaptor

1 x Male to 2 x Female RJ45 T Piece Adaptor.



- **1179:** RJ45 T-Piece Adaptor

1 x Female to 2 x Female RJ45 T Piece Adaptor.



- **1504:** BT Plug ~ RJ45 Socket



- **H51052:** ADSL Microfilter



- **775311:** RJ11 ~ BT Socket (PABX)



www.cie-group.com

CIE-Group Widdowson Close Blenheim Ind Est Bulwell Nottingham NG6 8WB England
T: +44(0)115 9770075 F: +44(0)115 9770081 E: info@cie-group.com W: www.cie-group.com


A better way to buy AV



• Modular RJ Plugs



Models:

Model:	Description	Positions	Cable Type	Max Performance
701004	RJ45 UTP Round Entry	8P/8C	Stranded	Cat5e
25243	RJ45 UTP Round Entry	8P/8C	Solid	Cat5e
1271	RJ45 UTP Flat Entry	8P/8C	Stranded	Cat5e
701004-AMP	RJ45 UTP Round Entry Amp	8P/8C	Stranded/Solid	Cat5e
11869	RJ45 STP Round Entry	8P/8C	Stranded	Cat5e
701017	RJ45 UTP Round Entry 2 Piece Sentinel	8P/8C	Stranded/Solid	Cat6
701021	RJ45 STP Round Entry 2 Piece Sentinel	8P/8C	Stranded/Solid	Cat6/Cat6A
701001	RJ22 Flat Entry	4P/4C	Stranded	Voice
701002	RJ11 Round Entry	6P/4C	Stranded	Voice
701003	RJ12 Round Entry	6P/6C	Stranded	Voice
701005	RJ48 Round Entry	10P/10C	Stranded	E1
31104	BT Crimp 631A	6P/4C	Stranded	Voice

• RJ45 Strain Relief Boots

Models:

Model:	Description
3596-LG	Light Grey / Beige
3596-BL	Blue
3596-GN	Green
3596-BK	Black
3596-YE	Yellow
3596-RD	Red
3596-PK	Pink
3596-OR	Orange
3596-MV	Purple
3596-WH	White
3596-DG	Dark Grey





Clever Little Box

- **CCC600:** UK Wall Plug to IEC Female Mains Lead - 1.9m
- **CCC280:** UK Wall Plug to IEC Female Mains Lead - 5m

UK Wall Plug (5A fused) to IEC Female Mains Leads-available in 1.9m and 5m length options.



- **CCC001:** IEC Male to Female Mains Lead - 2m

IEC Extension Lead-Male to Female (0.75mm²).



- **CCC253:** UK Wall Plug to Cloverleaf Female - 2m

UK Wall Plug (5A fused) to Cloverleaf female Mains Lead (0.75mm).



www.cie-group.com

CIE-Group Widdowson Close Blenheim Ind Est Bulwell Nottingham NG6 8WB England
T: +44(0)115 9770075 F: +44(0)115 9770081 E: info@cie-group.com W: www.cie-group.com


A better way to buy AV



Clever Little Box

- **CABO71:**
C14 Straight IEC Male Rewireable Connector (Black)
- **CABO71W:**
C14 Straight IEC Male Rewireable Connector (White)



- **CABO71A:**
C13 Straight IEC Female Rewireable Connector (Black)
- **CABO71WF:**
C13 Straight IEC Female Rewireable Connector (White)



- **CABO69:**
Right Angle C14 IEC Male Rewireable Connector (Black)
- **CABO69-WM:**
Right Angle C14 IEC Male Rewireable Connector (White)



- **CABO69A:**
Right Angle C13 IEC Female Rewireable Connector (Black)
- **CABO69-W:**
Right Angle C13 IEC Female Rewireable Connector (White)



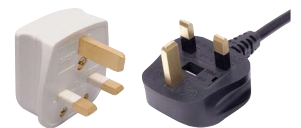
- **CABO65:**
C19 IEC Female Rewireable Connector (Black)
- **CABO65-W:**
C19 IEC Female Rewireable Connector (White)



- **CWA001:**
C20 IEC Male Rewireable Connector (Black)
- **CWA001-W:**
C20 IEC Male Rewireable Connector (White)



- **UK-PLUG:** CUK Plug BS1363 (Black)
- **UK-PLUG-WHT:** CUK Plug BS1363 (White)



www.cie-group.com

CIE-Group Widdowson Close Blenheim Ind Est Bulwell Nottingham NG6 8WB England
T: +44(0)115 9770075 F: +44(0)115 9770081 E: info@cie-group.com W: www.cie-group.com


A better way to buy AV



• PVC Flexible Conduit

Features:

- Flexible PVC thin wall conduit construction with reinforced nylon spiral
- Temperature rating: -10°C ~ +75°C intermittent to 85°C
- IP55 Rated

Models:

Model:	Description
CT1110	20(Ø) mm PVC Flexible Conduit Reel Size: 30 metres
CT1111	25(Ø) mm PVC Flexible Conduit Reel Size: 30 metres
CT1112	20(Ø) mm PVC Flexible Conduit Gland & Locknut
CT1113	25(Ø) mm PVC Flexible Conduit Gland & Locknut



• Galvanised Flexible Conduit

Features:

- Galvanised single clutch steel construction conduit
- Temperature rating: 0°C ~ +300°C
- IP40 Rated

Models:

Model:	Description
CT1114	20(Ø) mm Galvanised Flexible Conduit Reel Size: 30 metres
CT1115	25(Ø) mm Galvanised Flexible Conduit Reel Size: 30 metres
CT1116	20(Ø) mm Galvanised Flexible Conduit Gland & Locknut
CT1117	25(Ø) mm Galvanised Flexible Conduit Gland & Locknut



• Polypropolene Flexible Conduit

Features:

- Construction: Corrugated conduit manufactured from formulated Polypropolene
- Temperature rating: -5°C ~ +60°C intermittent to 70°C
- Flammability: 'Halogen Free' UL 94 VO, Oxygen Index 29%
- IP55 Rated

Models:

Model:	Description
CT1118	20(Ø) mm Polypropolene Flexible Conduit Reel Size: 100 metres
CT1119	25(Ø) mm Polypropolene Flexible Conduit Reel Size: 30 metres
CT1112	20(Ø) mm Polypropolene Flexible Conduit Gland & Locknut
CT1113	25(Ø) mm Polypropolene Flexible Conduit Gland & Locknut



• Polypropolene Slit Conduit

Features:

- Corrugated conduit manufactured from formulated Polypropolene
- Temperature rating: -5°C ~ +60°C intermittent to 70°C
- Flammability: 'Halogen Free' UL 94 VO, Oxygen Index 29%
- IP55 Rated

Models:

Model:	Description
CT1120	20(Ø) mm Polypropolene Slit Conduit Reel Size: 50 metres
CT1121	25(Ø) mm Polypropolene Slit Conduit Reel Size: 50 metres





Clever Little Box

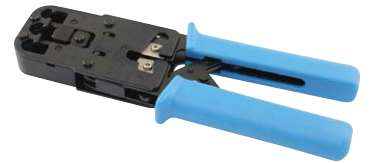
- **TO1019:** RJ11/12 Crimp Tool



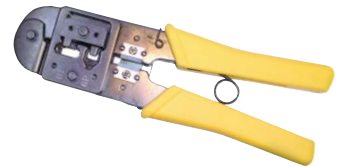
- **TO1020:** RJ45 Crimp Tool



- **TO1021:** Universal RJ Crimp Tool



- **TO1022:** BT Crimp Tool



- **TO1024:** Krone Punchdown Tool



- **TO1025:** 110 Punchdown Tool



- **TO1026:** Cyclops UTP Cable Stripper



www.cie-group.com

CIE-Group Widdowson Close Blenheim Ind Est Bulwell Nottingham NG6 8WB England
T: +44(0)115 9770075 F: +44(0)115 9770081 E: info@cie-group.com W: www.cie-group.com

cie-group
A better way to buy AV

X-ON Electronics

Largest Supplier of Electrical and Electronic Components

Click to view similar products for [clever little box manufacturer](#):

Other Similar products are found below :

[LPVGA-M/M-1.0M-FP](#) [CVT02-05CA0202](#) [MIGRIP-HDMI-5](#) [CLB-JL-8141](#) [STA-TSL001](#) [LPVGAMM5.0M](#) [LPVGA-M/M-10.0M-FP](#)
[MIGRIP-HDMI-0.5](#) [CLB-JL-8128](#) [LPVGAMM3.0M](#) [STA-201A-AC -3M](#) [CVT01-03CA0203](#) [LPVGA-M/F-3.0M-FP](#) [CLB-JL73](#)
[LPVGAMF5.0M](#) [LPVGAMM1.0M](#) [CVT01-05CA0203](#) [STA-5010-10M](#) [LPVGA-M/F-5.0M-FP](#) [CLB-JL-8137](#) [CVT02-03CA0202](#)
[LPVGAMF3.0M](#) [STA-201A-CC -1M](#) [MIGRIP-HDMI-3](#) [CLB-JL-8106](#) [CVT01-03CA0205](#) [CLB-JL-8131](#) [CLB-JL-8142](#) [CLB-JL-8111](#)
[CLB-JLB75](#) [CVT01-04CA0203](#) [CLB-JL-8143](#) [CLB-JL-8109](#) [CLB-JL-8129](#) [CVT01-04CA0205](#) [CLB-JL53](#) [STA-5010-1M](#) [CLB-JL-8130](#)
[CLB-JL-8105](#) [CLB-JL-8159](#) [CLB-JL-8154](#) [CLB-JL-8146](#) [CLB-JL-8147](#) [CLB-JL-8148](#) [CLB-JLR59-1](#) [CLB-JL-8144](#) [CLB-JL-8149](#) [CLB-JL-8158](#) [CLB-JL-8103](#) [CLB-JL-8156](#)