

320 5046

Plastic bodied compact limit switches

Tiny Ti2

Compact design
 Protection class IP 65
 Mounting measurements according to DIN EN 50047
 With captive locking lid



Designation

Part no.

Switching diagram

⊕ positive break according to IEC 947-5-1 Chap. 3

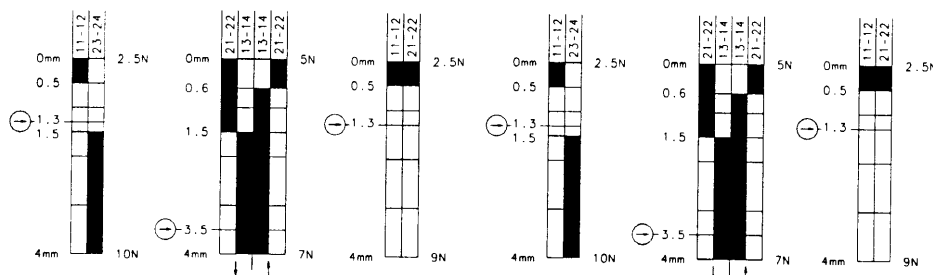
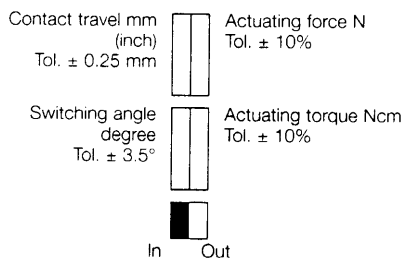
Za: changeover contact is not galvanically isolated

Zb: changeover contact is galvanically isolated

Slow-action contact/snap-action contact

Gasket inside (iw)/outside (w)

Ti2-U1Z w	Ti2-SU1Z w	Ti2-A2Z w	Ti2-U1Z Riw	Ti2-SU1Z Riw	Ti2-A2Z Riw
608.8103.001	608.8153.002	608.8803.003	608.8117.007	608.8167.008	608.8817.009
⊕ Zb	⊕ Zb	⊕ Zb	⊕ Zb	⊕ Zb	⊕ Zb
●/-	-/●	●/-	●/-	-/●	●/-
w	w	w	iw	iw	iw



Voltage	max.
Continuous current	max.
Making current, acc. to IEC 947-5-1 AC 15/DC 13	

250 V AC	250 V AC	250 V AC	250 V AC	250 V AC	250 V AC
10 A	10 A	10 A	10 A	10 A	10 A
●	●	●	●	●	●

Switching frequency	max.
Mech. operational life – number of switching cycles	
Ambient temperature	min./max.

100/min.	100/min.	100/min.	100/min.	100/min.	100/min.
3 x 10 ⁶	3 x 10 ⁶	3 x 10 ⁶	3 x 10 ⁶	3 x 10 ⁶	3 x 10 ⁶
-30 °C/+80 °C	-30 °C/+80 °C	-30 °C/+80 °C	-30 °C/+80 °C	-30 °C/+80 °C	-30 °C/+80 °C
-22 °F/+176 °F	-22 °F/+176 °F	-22 °F/+176 °F	-22 °F/+176 °F	-22 °F/+176 °F	-22 °F/+176 °F

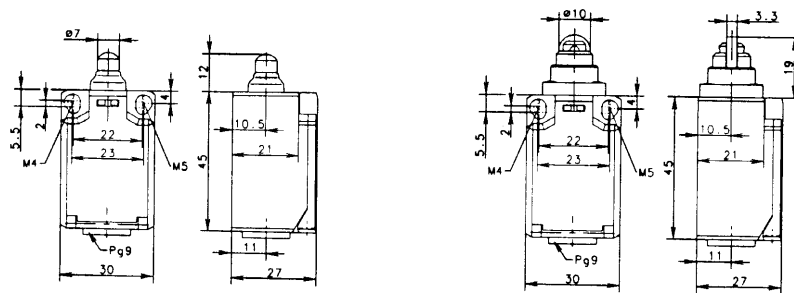
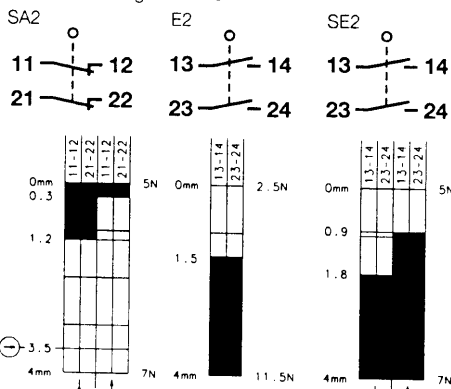
Approvals

Weight

Type of storage/time of delivery as agreed

UL, CSA	UL, CSA	UL, CSA	UL, CSA	UL, CSA	UL, CSA
BG	BG	BG	BG	BG	BG
0.04 kg	0.04 kg	0.04 kg	0.05 kg	0.05 kg	0.05 kg
●/-	●/-	●/-	●/-	●/-	●/-

Further switching functions



Dimensions

All dimensions in mm (inch)

X-ON Electronics

Largest Supplier of Electrical and Electronic Components

Click to view similar products for [Limit Switches](#) category:

Click to view products by [Bernstein](#) manufacturer:

Other Similar products are found below :

[6LS2-4PG](#) [5ML1-E1](#) [5ML31](#) [LZG1](#) [LZL1-6C](#) [622EN114-R](#) [622EN18-6](#) [622EN224-6B](#) [622EN230](#) [622EN237-R](#) [622EN69-3](#) [622EN85-RB](#)
[MA-10019](#) [6PA109](#) [7LS51](#) [83547001](#) [83725002](#) [83830001](#) [83840001](#) [83840701](#) [83841001](#) [83870104](#) [83881140](#) [8AS42](#) [8LS10](#) [8LS125-](#)
[4PG](#) [8LS152-4PGN20](#) [914CE16-3A](#) [914CE16-AQ](#) [914CE3-3L1](#) [915PA10](#) [91MCE16-P2O](#) [924CE16-Y3](#) [924CE1-S6](#) [924CE1-T25A](#)
[924CE1-T3](#) [924CE1-T9A](#) [924CE2-T9](#) [924CE31-Y20-X5](#) [924CE31-Y3L1](#) [GL-10054](#) [GL-85710](#) [GL-85714](#) [GLAB26J2B](#) [GLDB03C-6](#)
[GLZ324](#) [PS21R-NT11N7-YK0](#) [D4A-1106N](#) [D4A1201N](#) [D4A-3E02N](#)