

Betaduct PVC Grey Open Slot

Supplied with Lid



Open Slot PVC Betaduct provides a lightweight self-extinguishing cable trunking with excellent rigidity and performance characteristics. Wide fingers give additional cable support and terminated wires can be re-routed easily. Ideal for use when bundles, cables and wires need supporting in control panels, distribution boards and switchgear. Ideal for all panel building applications.

STANDARD COLOURS

Grey RAL 7030

FLAMMABILITY

UL94 V-O Rated Material

APPROVALS

RoHS, CSA, UL and Lloyds Register

MATERIAL

Self-extinguishing PVC

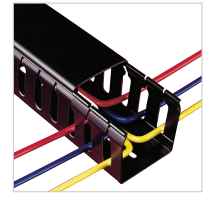
SERVICE TEMPERATURE RANGE

15°C to +60°C

STANDARDS

Base Slots to DIN 43659.

Nominal Size Inner W x H (mm)	Nominal Size Outer W x H (mm)	Farnell Part. PVC Grey RAL 7030	Betaduct Manufacturer Part. PVC Grey RAL 7030	Total Metres Per Pack
25 x 37.5	29 x 37.5	1578131	10451022	4M
25 x 37.5	29 x 37.5	1630243	10450022	12M
25 x 50	29 x 54	1578132	10451023	4M
25 x 50	29 x 54	1630244	10450023	12M
25 x 75	29 x 79	1630245	10450024	8M
37.5 x 37.5	41 x 41	1630247	10450032	12M
37.5 x 50	41 x 54	1630248	10450033	8M
37.5 x 75	39 x 79	1630249	10450034	8M
50 x 25	54 x 28	1578134	10451051	4M
50 x 50	54 x 54	1578135	10451053	4M
50 x 50	54 x 54	1630250	10450053	8M
50 x 75	55 x 79	1630251	10450054	8M
50 x 100	56 x 105	1630252	10450055	4M
75 x 75	80 x 80	1630253	10450074	8M
75 x 100	80 x 105	1630254	10450075	4M
100 x 50	107 x 54	1630255	10450103	4M
100 x 75	107 x 80	1630256	10450104	4M
100 x 100	107 x 104	1630257	10450105	4M
125 x 75	131 x 78	1630259	10450124	4M



Betaduct PVC Black Open Slot

Supplied with Lid



Open Slot PVC Betaduct provides a lightweight self-extinguishing cable trunking with excellent rigidity and performance characteristics. Wide fingers give additional cable support and terminated wires can be re-routed easily. Ideal for use when bundles, cables and wires need supporting in control panels, distribution boards and switchgear. Ideal for all panel building applications.

STANDARD COLOURS

Black RAL 9005

FLAMMABILITY

UL94 V-O Rated Material

APPROVALS

RoHS, CSA, UL and Lloyds Register

MATERIAL

Self-extinguishing PVC

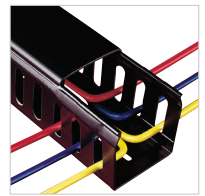
SERVICE TEMPERATURE RANGE

15°C to +60°C

STANDARDS

Base Slots to DIN 43659.

Nominal Size Inner W x H (mm)	Nominal Size Outer W x H (mm)	Farnell Part. PVC Black RAL 9005	Betaduct Manufacturer Part. PVC Black RAL 9005	Total Metres Per Pack
25 x 37.5	29 x 37.5	1630261	09810000	12M
25 x 50	29 x 54	1630262	09130000	12M
25 x 75	29 x 79	1630263	09140000	8M
50 x 50	54 x 54	1630264	09160000	8M
50 x 75	55 x 79	1630265	09170000	8M
50 x 100	56 x 105	1630266	09920000	4M
75 x 75	80 x 80	1630267	09190000	8M
100 x 75	107 x 80	1630268	09990000	4M



Betaduct PVC Black Closed Slot

Supplied with Lid



Closed Slot PVC Betaduct provides lightweight self-extinguishing cable trunking with excellent rigidity and performance characteristics. It has excellent cable retention with enhanced protection for installers. For use when bundles, cables and wires need supporting in control panels, distribution boards and switchgear. Ideal for all panel building applications.

STANDARD COLOURS

Black RAL 9005

FLAMMABILITY

UL94 V-O Rated Material

APPROVALS

RoHS, CSA, UL and Lloyd's Register

MATERIAL

Self-extinguishing PVC

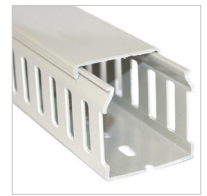
SERVICE TEMPERATURE RANGE

15°C to +60°C

STANDARDS

Base Slots to DIN 43659.

Nominal Size Inner W x H (mm)	Nominal Size Outer W x H (mm)	Farnell Part. PVC Black RAL 9005	Betaduct Manufacturer Part. PVC Black RAL 9005	Total Metres Per Pack
15 x 15	17 x 17	1578127	08700000	4M
25 x 20	29 x 23	1578128	08710000	4M
25 x 20	29 x 23	1630290	09010000	12M
25 x 37.5	29 x 41	1630291	09510000	12M
25 x 50	29 x 54	1578129	08720000	4M
25 x 50	29 x 54	1630292	09030000	12M
25 x 75	29 x 79	1630293	09040000	8M
50 x 25	54 x 28	1578129	08720000	4M
50 x 50	54 x 54	1578130	08730000	4M
50 x 50	54 x 54	1630294	09060000	8M
50 x 75	55 x 79	1630296	09070000	8M
75 x 75	80 x 80	1630297	09090000	8M
100 x 75	107 x 80	1630298	09690000	4M
125 x 75	131 x 78	1630299	09400000	4M



Betaduct PVC Grey Closed Slot

Supplied with Lid



Closed Slot PVC Betaduct provides lightweight self-extinguishing cable trunking with excellent rigidity and performance characteristics. It has excellent cable retention with enhanced protection for installers. For use when bundles, cables and wires need supporting in control panels, distribution boards and switchgear. Ideal for all panel building applications.

STANDARD COLOURS

Grey RAL 7035

FLAMMABILITY

UL94 V-O Rated Material

APPROVALS

RoHS, CSA, UL and Lloyds Register

MATERIAL

Self-extinguishing PVC

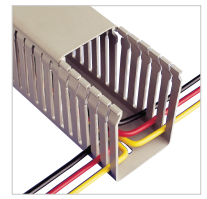
SERVICE TEMPERATURE RANGE

15°C to +60°C

STANDARDS

Base Slots to DIN 43659.

Nominal Size Inner W x H (mm)	Nominal Size Outer W x H (mm)	Farnell Part. PVC Grey RAL 7035	Betaduct Manufacturer Part. PVC Grey RAL 7035	Total Metres Per Pack
25 x 20	29 x 23	1630280	10460021	12M
25 x 37.5	29 x 41	1630281	10460022	12M
25 x 50	29 x 54	1630282	10460023	12M
25 x 75	29 x 79	1630284	10460024	8M
50 x 50	54 x 54	1630285	10460053	8M
50 x 75	55 x 79	1630286	10460054	8M
75 x 75	80 x 80	1630287	10460074	8M
100 x 75	107 x 80	1630288	10460104	4M
125 x 75	131 x 78	1630289	10460124	4M



Betaduct PVC Grey Narrow Slot

Supplied with Lid



Narrow Slot PVC Betaduct provides a lightweight self extinguishing cable trunking with excellent rigidity and performance characteristics. Ideal for use with slimmer terminal blocks where more access is required, it improves appearance of panels with cables out in best position. For use when bundles, cables and wires need supporting in control panels, distribution boards and switchgear. Ideal for all panel building applications.

STANDARD COLOURS

Grey RAL 7030

FLAMMABILITY

UL94 V-O Rated Material

APPROVALS

RoHS, CSA, UL and Lloyd's Register

MATERIAL

Self-extinguishing PVC

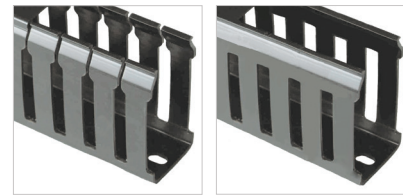
SERVICE TEMPERATURE RANGE

15°C to +60°C

STANDARDS

Base Slots to DIN 43659.

Nominal Size Inner W x H (mm)	Nominal Size Outer W x H (mm)	Farnell. Part PVC Grey RAL 7030	Manufacturer Betaduct PVC Grey RAL 7030	Total Metres Per Pack
25 x 37.5	29 x 37.5	1630269	10470022	12
25 x 50	29 x 54	1630270	10470023	12
25 x 75	29 x 79	1630272	10470024	8
37.5 x 50	41 x 54	1630273	10470033	8
37.5 x 75	39 x 79	1630274	10470034	8
50 x 50	54 x 54	1630275	10470053	8
50 x 75	55 x 79	1630276	10470054	8
50 x 100	56 x 105	1630277	10470055	4
75 x 75	80 x 80	1630278	10470074	8
100 x 75	107 x 80	1630279	10470104	4



Betaduct Noryl Open Slot, Closed Slot.

Supplied with Lid



Betaduct Noryl is manufactured from high grade NH6010B Noryl, which is a modified polymer manufactured by SABIC Innovative Plastics IPBV.

Noryl is halogen-free and has excellent low smoke characteristics. No other manufacturer extrudes ducting from this grade of Noryl. It is recommended for areas where human life or electronic components are a risk. It is designed and specified for installations in hazardous applications such as rail, underground, marine, mass transit and military applications. It is also widely used in petrochemical plants and offshore oil and gas installations, accommodation modules, rail and mass transit applications.

Available in open slot, closed slot or solid wall, in a wide range of sizes with 19mm pitching.

STANDARD COLOURS

Black RAL 9004

FLAMMABILITY

UL94 V-1 Rated Material

APPROVALS

RoHS, UL and cULus Approved

MATERIAL

Self-extinguishing Noryl Extra, Halogen-Free NH6010B

SERVICE TEMPERATURE RANGE

30°C to +120°C

STANDARDS

Base Slots to DIN 43659.

OPEN SLOT

Nominal Size Inner W x H (mm)	Nominal Size Outer W x H (mm)	Farnell Part. Noryl Black RAL 9004	Manufacturer Betaduct Noryl Black RAL 9004	Total Metres Per Pack
25 x 37.5	29 x 38	1630300	23461000	12
25 x 50	29 x 54	1630302	23462000	12
25 x 75	29 x 79	1630303	23463000	8

CLOSED SLOT

Nominal Size Inner W x H (mm)	Nominal Size Outer W x H (mm)	Farnell Part. Noryl Black RAL 9004	Manufacturer Betaduct Noryl Black RAL 9004	Total Metres Per Pack
25 x 37.5	29 x 38	1630304	23451000	12
25 x 50	29 x 54	1630305	23452000	12
25 x 75	29 x 79	1630306	23453000	8

X-ON Electronics

Largest Supplier of Electrical and Electronic Components

Click to view similar products for [Wire Identification category](#):

Click to view products by [Beta manufacturer](#):

Other Similar products are found below :

[CU6337-000](#) [CU6342-000](#) [FCA-410-12](#) [11631010](#) [1-1768037-1](#) [1-1768037-2](#) [1-1768050-0](#) [PXLK-VI](#) [Q62184-1](#) [A64304-000](#) [QMT221](#)
[HK032WE1NF038B](#) [1330-0519-10](#) [1395199-1](#) [1395200-1](#) [1395202-1](#) [DMVF050WE-300S6](#) [D-SCE-1K-2.4-50-4-CS7834](#) [1538738-1](#)
[E90935-000](#) [EC1238-000](#) [EC1465-000](#) [EC1855-000](#) [EC1859-000](#) [EC1863-000](#) [EC5415-000](#) [EC7277-000](#) [EC7352-000](#) [EC7603-000](#)
[EC7707-000](#) [EC7735-000](#) [EC7768-000](#) [EC7828-000](#) [EC7854-000](#) [EC7952-000](#) [EC8128-000](#) [1768037-8](#) [1768041-7](#) [NC-127191-10-9](#)
[HS048WE2NF038B](#) [C03232-000](#) [HTCM-SCE-14-4H-9](#) [HTMS-3/16-9](#) [HT-SCE-1/4-2.0-4](#) [HT-SCE-3/16-2.0-4](#) [HTTMS-1/2-1.50-9](#) [HTTMS-](#)
[CM-1/2-4H-9](#) [HX-SCE-19.0-50-9](#) [HX-SCE-6.4-50-4](#) [C25254-000](#)