



### Order Code

**MHRJ — 45SRI — SM — R**

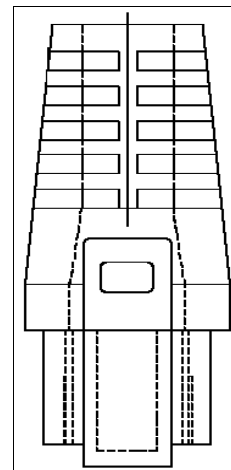
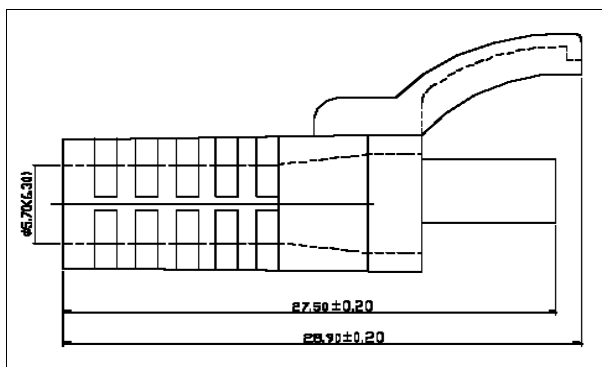
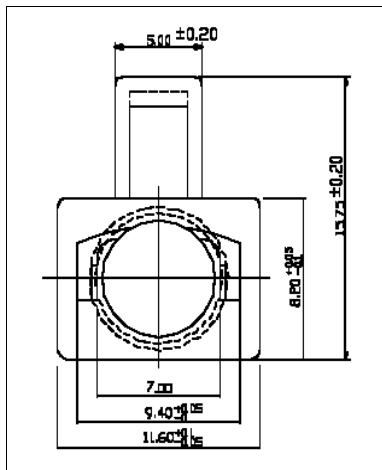
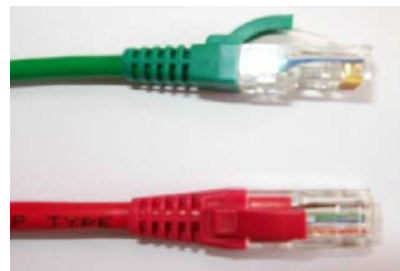
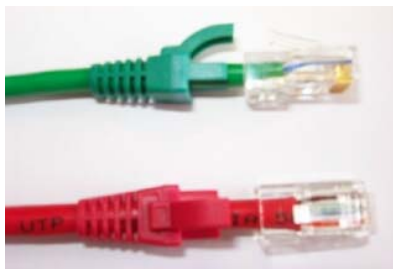
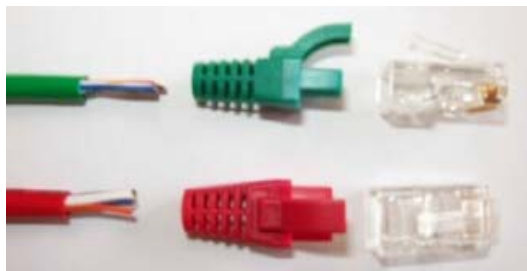
Series \_\_\_\_\_

Strain Relief Insert \_\_\_\_\_

Style:  
SM=Small, Omit=Standard \_\_\_\_\_

Colour: \_\_\_\_\_  
 DG = Light Grey, BK = Black, R = Red  
 G = Green, BL = Blue, Y = Yellow

- Ideal as a replacement for moulded boots
- Available in 6 standard colours
- Custom colours available on request
- Ideal with MHRJ458P8CR, the MH RJ45 Plug [Page 4](#)
- Standard version accommodates cables with OD to 6 mm
- Small version accommodates cables with OD to 5.5 mm
- Low profile. Insert does not overlap the outside of the plug. Ideal for high density applications.
- The insert locks into place when the plug is assembled with a standard assembly tool.



### Related Products:

- MHRJ45SRB—RJ45 Strain Relief Boots [Page 1](#)
- MHRJ45SRB-SM—RJ45 Strain Relief Boots, Small. [Page 1](#)
- MHRJ45SRB-RET—RJ45 Strain Relief Boots, Retrofit [Page 1](#)
- MHRJ45SRB-QR—RJ45 Strain Relief Boots, Quick Release [Page 4](#)

## X-ON Electronics

Largest Supplier of Electrical and Electronic Components

*Click to view similar products for [mh connectors](#) manufacturer:*

Other Similar products are found below :

[MHDCMR37-ULP](#) [CCOV-37SC-BLACK](#) [C88E310000](#) [DSSKP15L-DB15S-K](#) [MHD45ZK25-DM25P-K](#) [MHHDS26-F-T-B-S](#) [MHCCOV-25SC-BK](#) [MHDTZK15-RA-K](#) [DSSKM15L-DB15S-K](#) [MHDM25-DM25P-K](#) [BNC4MML1MRG58](#) [RJ45SRB-RET-O](#) [MHDPPK25-Y-K](#) [MHDM9-DB9P-K](#) [MHCCOV-9ME](#) [BNCL2.0MRG58](#) [MHDD15-F-T-B-M](#) [MHDTZK25-K](#) [MHRJ126P6CR](#) [RJ45SRB-LGREY](#) [MHED-DS25S](#) [BNCL1.0MRG58](#) [MHDM25-K](#) [RG58SRB-G](#) [MHD45PK37-K](#) [MHDTPPK25-DB25SK](#) [MHDU45ZK09-K](#) [DA9-PMJ8-B-K](#) [MHD45ZK50-K](#) [MHDD25-M-T-B-S](#) [RG58SRB-R](#) [MHDB50SP](#) [MH3101S-8821](#) [RJ45SRB-RED](#) [MHRJ116P4CR](#) [MHTRI-M-9-K](#) [MHDM35-9-K](#) [DSSKM25L-DB25P-K](#) [MHDPPK-M-37-K](#) [MHDTPPK37-K](#) [MHRJJ44NFV](#) [GA0909FFLGK-RC](#) [DA9-SMJ8-R-K](#) [RG58SRB-BE](#) [MHDM25-DB25P-K](#) [MHCCOV-15SN-LG](#) [MHDTZK9-RA-K](#) [MHDVSL25-K](#) [MHCCOV-25SC-LG](#) [DJF-14](#)