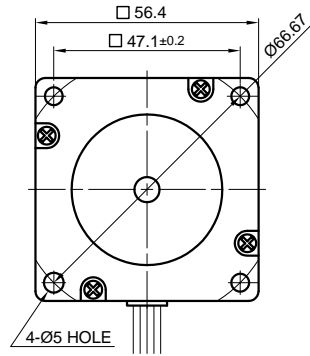
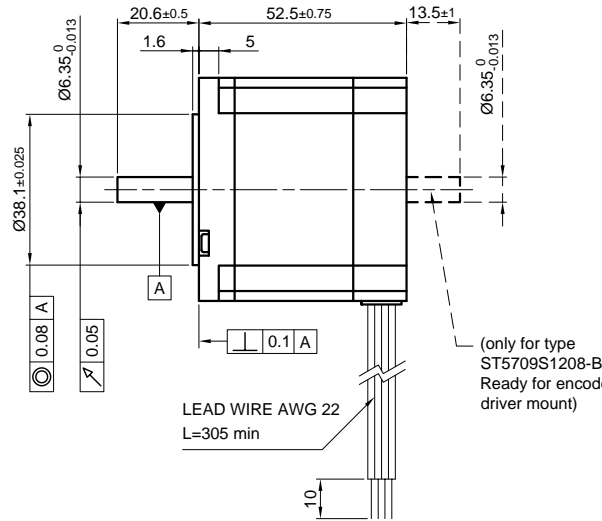


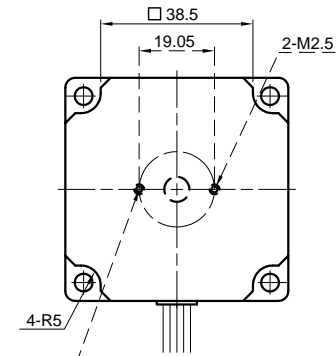
Front view and mounting



Side view

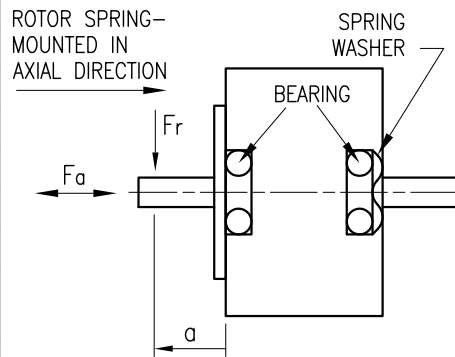


Rear view



SPECIFICATION	CONNECTION		BIPOLAR	
	UNIPOLAR OR BIPOLAR-1 WINDING	SERIAL	PARALLEL	
VOLTAGE (VDC)	6.0			
AMPS/PHASE	1.2	0.85	1.7	
RESISTANCE/PHASE (Ohms)@25°C	5.0±15%	10±15%	2.5±15%	
INDUCTANCE/PHASE (mH) @1KHz	11.6±20%	46.4±20%	11.6±20%	
HOLDING TORQUE (Nm) [lb-in]	0.75 [6.637]	1.06 [9.381]	1.06 [9.381]	
DETTENT TORQUE (Nm) [lb-in]	0.0225 [0.199]			
STEP ANGLE (°)	0.9			
STEP ACCURACY (NON-ACCUM)	±5%			
ROTOR INERTIA (Kg-m <sup>2</sup> ) [lb-in <sup>2</sup> ]	2.75x10 <sup>-5</sup> [0.094]			
WEIGHT (Kg) [lb]	0.65 [1.433]			

PERMISSIBLE RADIAL+AXIAL FORCE



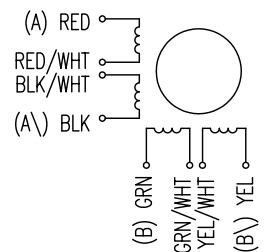
	AXIAL-FORCE Fa (N)	
	Fa=10	
AMBIENT TEMPERATURE -10°~ 50°C [14°F ~ 122°F]	DISTANCE a (mm)	5 10 15 20
INSULATION RESISTANCE 100 MOhm (UNDER NORMAL TEMPERATURE AND HUMIDITY)	RADIAL-FORCE Fr (N)	130 90 70 52
INSULATION CLASS B 130° [266°F]		AXIAL RADIAL
DIELECTRIC STRENGTH 500VAC FOR 1 MIN. (BETWEEN THE MOTOR COILS AND THE MOTOR CASE)	SHAFT PLAY (mm)	0.075 0.025
AMBIENT HUMIDITY MAX. 85% (NO CONDENSATION)	AT LOAD MAX: (N)	10 5.0

TYPE OF CONNECTION (EXTERN)	BIPOLAR			MOTOR		
	UNIPOLAR	1WINDING	SERIAL	PARALLEL	LEADS	WINDING
A	—	A	A	A	RED	A
COM	—	—	—	—	RED/WHT	
A\	—	A\	A\	A\	BLK/WHT	A\
B	—	B	B	B	BLK	B
COM	—	—	—	—	GRN	
B\	—	B\	B\	B\	GRN/WHT	B\
					YEL/WHT	
					YEL	

FULL STEP 2 PHASE-Ex., WHEN FACING MOUNTING END (X)

STEP	A	B	A\	B\	CCW	CW
1	+	+	-	-	↓	↑
2	-	+	+	-	↓	↑
3	-	-	+	+	↓	↑
4	+	-	-	+	↓	↑

WIRING DIAGRAM



REV	DESCRIPTION	DATE	APVD

NANOTEC:  
ST5709S1208

SCALE	APVD	DATE
FREE	S.Hα.	15.01.07
X ±0.5	CHKD	
1PL ±0.2	DRN	J.W. 05.07.06
2PL ±0.1	SIGNATURE	DATE
ANGLE ±30'		

**STEPPING MOTOR**  
DWG.NO ST5709S1208

## **X-ON Electronics**

Largest Supplier of Electrical and Electronic Components

*Click to view similar products for [nanotec](#) manufacturer:*

Other Similar products are found below :

[LSNUT-T6X2-F](#) [STF2818X0504-A](#) [SP2575M0206-A](#) [DB59C024035-A](#) [SP1518M0204-A](#) [ST5918M3008-A](#) [ST6018L3008-A](#) [ZKRS485-USB](#) [SP3575M0906-A](#) [C5-01](#) [ST2818S1006-B](#) [SMCI35](#) [ST4118L1804-A](#)