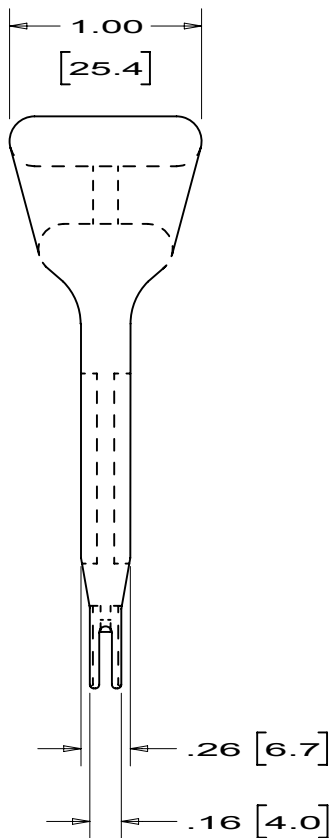
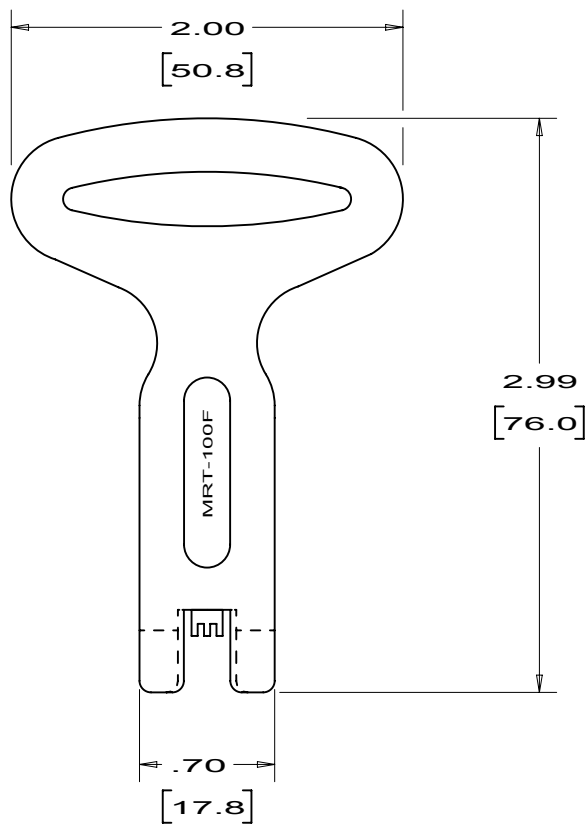


THIS COPY IS PROVIDED ON A RESTRICTED BASIS AND IS NOT TO BE USED IN ANY WAY DETRIMENTAL TO THE INTERESTS OF PANCON.



**NOTES:**

1. MATERIAL: NYLON
2. COLOR: BLACK
3. PART WEIGHT: .9 OUNCES  
(25 GRAMS)
4. PART NUMBER: MRT-100F

PDF FILE AVAILABLE  
KA-10100 / LAYER 1

REV	DATE	BY	CHK	DESCRIPTION	ECN	R	CUST	SUP
5	02/15 02	JAT		ADDED PDF FILE AND REVISED MFG LOCATION	2025			
4		JEP		RELEASED	1865			

**PANCON**  
CONNECTORS  
www.pancon.de / GERMANY  
www.panconconnectors.com / USA  
BOLINGBROOK, ILLINOIS

**MAS-CON<sup>®</sup>, .100" MRT  
MANUAL TERMINATION TOOL**

UNLESS OTHERWISE SPECIFIED,  
DIMENSIONAL TOLERANCES ARE:  
(.X) ± (.XXX) ± .005(.1)  
(.XX) ± .01(.3) ANGLES ±

UNLESS OTHERWISE SPECIFIED, ALL DIMENSIONS ARE GIVEN IN INCHES. THIRD ANGLE PROJECTION.

DRAWN BY  
**JEP**  
DATE  
**3-31-88**  
CHK'D  
**WJH**

MAT'L.  
**SEE NOTES**

SCALE  
**1:1**  
DRAWING NO.  
**KA-10100**  
DWG  
**A**  
SIZE

## X-ON Electronics

Largest Supplier of Electrical and Electronic Components

*Click to view similar products for [pancon](#) manufacturer:*

Other Similar products are found below :

[MCT](#) [CE156F18-10-C\\_E](#) [CTD-100F](#) [MMIT-156F](#) [100-932-432](#) [100-932-033](#) [625309B](#) [100-096-033](#) [CTD-156F](#) [625222E](#) [CE100F24-9-C](#)  
[CE156F20-7-C](#) [CE156F24-3-D\\_E](#) [SCC100F-6-C](#) [CE100F22-5-D\\_E](#) [625581C](#) [CTP100F24-5-D](#) [CE156F20-5-D\\_E](#) [CE156F20-07-C](#)  
[MLSS156-13-C](#) [100-032-033](#) [MUAS100-8-C\\_E](#) [100-964-433](#) [CE156F24-4-D\\_E](#) [CE156F18-7-C\\_E](#) [100-964-033](#) [CE156F20-8-C\\_E](#)  
[MTSS156-8-C](#) [CE156F24-2-D\\_E](#) [CE100F22-7-C\\_E](#) [100-096-432](#) [100-348-033](#) [SCC100F-3-D](#) [MUAS100-6-C\\_E](#) [120-964-435](#) [CE100F22-](#)  
[10-C\\_E](#) [CE100F24-10-C\\_E](#) [MUAS100-5-D\\_E](#) [MLAS100-10-C](#) [100-032-432](#) [MUAS100-2-D\\_E](#) [MUSS100-10-C\\_E](#) [SCC156F-4-D](#)  
[CE100F24-16-C\\_E](#) [MTAS156-6-C](#) [CE156F18-5-D\\_E](#) [CE100F24-8-C\\_E](#) [CE100F28-6-C\\_E](#) [MTSS156-12-C](#) [CE156F20-12-C\\_E](#)