

boxes with entries, size < 105x105 mm

- IP55, IK07 (2J); incandescent wire resistance: 650°C.
- Used as junction box for normal circuits (in ERPs to art. EL10, housing and industry).

boxes with entries, size ≥ 105x105 mm

- IP55, IK07 (2J); incandescent wire resistance: 750°C.
- Used as junction box or incorporated in electrical control panel (in ERPs to Art. EL9, housing and industry).



2 colours available

- Grey RAL7035 or white RAL9010 to adapt to all installation types: from basements to laboratories to collective kitchens.

entries with EVA membrane or stepped for cables and conduits

- Direct introduction without tools of rigid cables up to diameter 14 mm.
- Introduction of cables > Ø 14 mm and of conduits by removing step of the appropriate diameter.
- All entries are interchangeable.

practical

- Identification of entry step diameters.
- Numbering of entries to facilitate circuit identification.

boxes with entries < 105 x 105 mm

internal dimensions (mm)			IP55 IK07 650°C		cover	entries for cables and conduit (Ø min - max)			
H	W	D	grey	white		4/20	4/25	4/32	4/40
60		40	05001	05021	clip-in	4	-	-	-
65	65	45	05002	05022	clip-in	4	-	-	-
65	65	45	05032	05072	clip-in	7	-	-	-
105	65	55	05003	05023	clip-in	8	-	-	-
80	80	45	05004	05024	clip-in	7	-	-	-

boxes with entries ≥ 105 x 105 mm

internal dimensions (mm)			IP55 IK07 750°C		cover	entries for cables and conduit (Ø min - max)			
H	W	D	grey	white		4/20	4/25	4/32	4/40
105	105	55	05005	05025	1/4-turn screw	-	7	-	-
150	105	80	05007	-	1/4-turn screw	-	10	-	-
175	150	80	05010	-	1/4-turn screw	-	10	2	-
225	175	100	05013	-	1/4-turn screw	-	4	8	-
275	225	120	05017	-	1/4-turn screw	-	-	16	4
325	275	120	05019	-	1/4-turn screw	-	-	10	6



entries and accessories

see page 14

ducting connection

see page 17

safety circuits boxes with entries

- IP55, IK07 (2J); incandescent wire resistance: 960°C.
- Used as junction box for safety circuits (in ERPs to Art. EL10, housing and industry).

special boxes for safety circuits

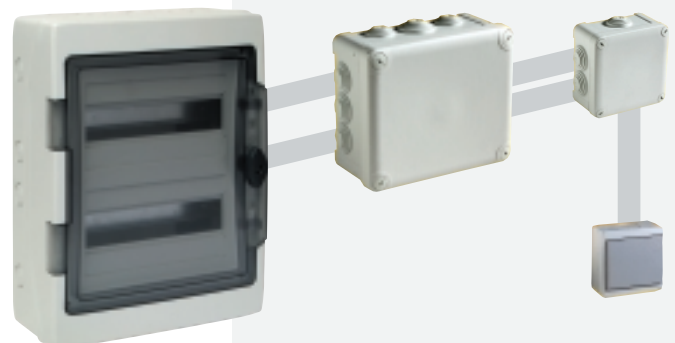
internal dimensions (mm)			IP55 IK07 960°C		cover	entries for cables and conduit (Ø min - max)	
H	W	D	red			4/20	4/25
80	80	45	05164		clip-in	7	-
105	105	55	05165		1/4-turn screw	-	7
150	105	80	05167		1/4-turn screw	-	10

smart

- Red box to connect safety circuits.

it's pro!

- MUREVA family products can be associated for simplified installation offering professional quality.
- A rugged, sealed and perfectly aligned installation.



When ordering in the UK please add the prefix ENN to the reference number

X-ON Electronics

Largest Supplier of Electrical and Electronic Components

Click to view similar products for [schneider manufacturer](#):

Other Similar products are found below :

[LU9M1](#) [7D](#) [7S](#) [7XA1](#) [FNQR2](#) [8501RS44V24](#) [8501RSD14P14V51](#) [8501XO20V03Y414](#) [9001KXRK](#) [9001SKR9P35RH25](#) [9001SKT35L31](#)
[9003K2C003GA](#) [9007AA1](#) [9007BA1](#) [9007C54D](#) [9007C62A2](#) [9007CA11](#) [9007FA3](#) [9007HA4](#) [9007HA6](#) [9007KA1](#) [9007KB11](#)
[9007MS01S0206](#) [9007MS02S0300](#) [9012GAR4](#) [9012GAW2](#) [9012GBW1](#) [9012GDW5E3](#) [9012GFW1](#) [9012GNG1](#) [9012GNG3](#) [9012GNG6](#)
[9013FHG39J69](#) [9013GHG2J30](#) [9050JCK2F30V14](#) [GV2ME32](#) [GVAN20](#) [GZ1E02](#) [ABL8RPS24030](#) [DL1BLB](#) [ATS01N206QN](#) [RSL1PRJU](#)
[9001KA35](#) [9001KA3G](#) [9001KA4](#) [9001KR1GH5](#) [9001KR1U](#) [9001KXSDC](#) [9007C52A2](#) [9007C54A2](#)