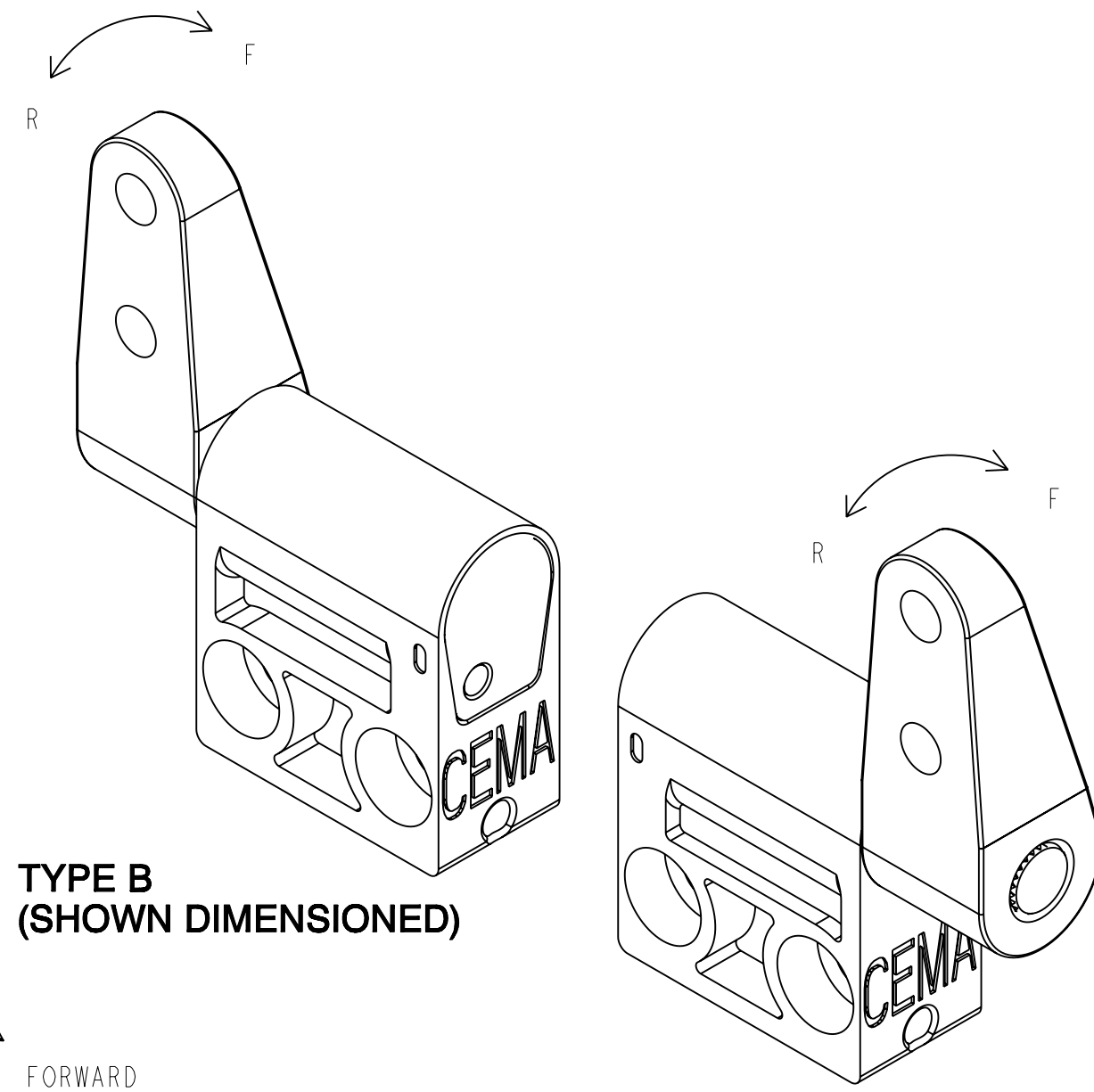
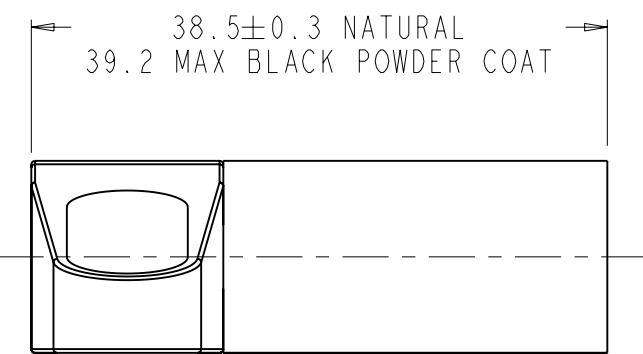


PROPRIETY ITEM - EXCEPT FOR USES EXPRESSLY GRANTED IN WRITING.  
 INFORMATION DISCLOSED HEREON IS CONFIDENTIAL AND ALL RIGHTS  
 PATENT AND OTHERWISE ARE RESERVED BY SOUTHCO, INC.

REVISION RECORD			
SYMB	DESCRIPTION	BY	DATE
A	PRN: P2006-0566	JM	13APR06
B	PRN: P2006-0736	AJH/RLR	27MAY2006
C	PRN: P2007-0719	AJH	24AUG2007
D	PRN: P2008-0041	MJS/TBH	16JAN2008

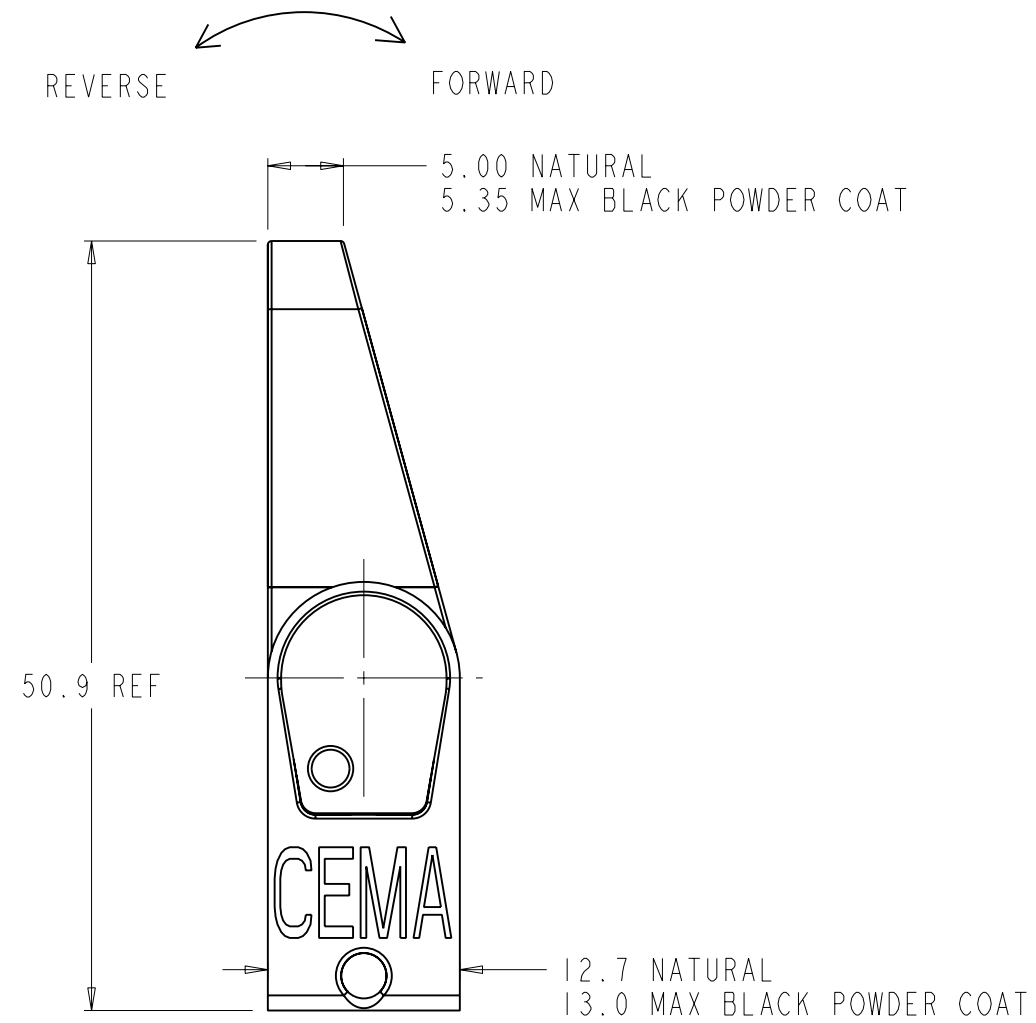
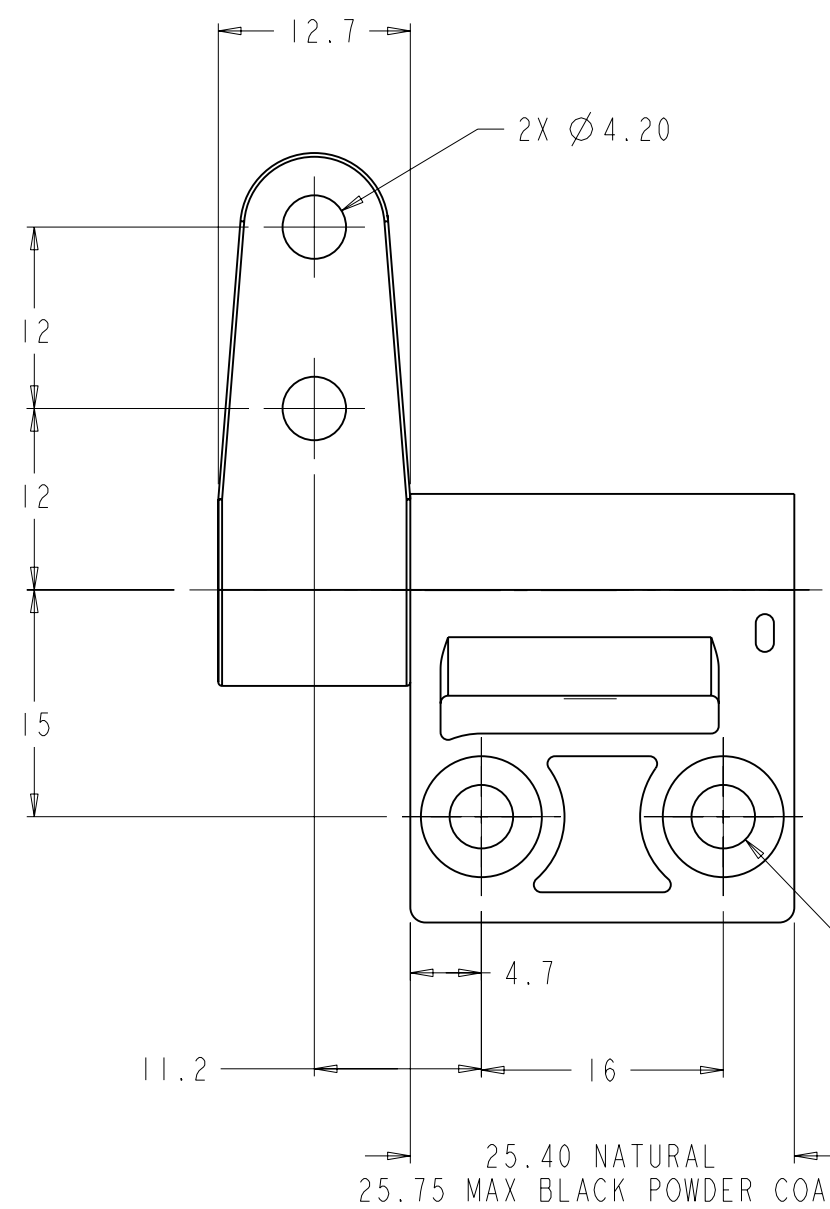
NOTES:

- MATERIAL & FINISH:  
 HOUSING AND ADAPTER - ZINC ALLOY,  
 FOR FINISH SEE TABLE.  
 SHAFT AND TORQUE ELEMENTS - HARDENED STEEL
- INSTALL HINGE USING A No. 8 OR M4 SOCKET HEAD CAP SCREW
- FOR PROPER FUNCTION, ASSEMBLY MUST INCLUDE  
 (1) TYPE "A" & (1) TYPE "B" HINGE

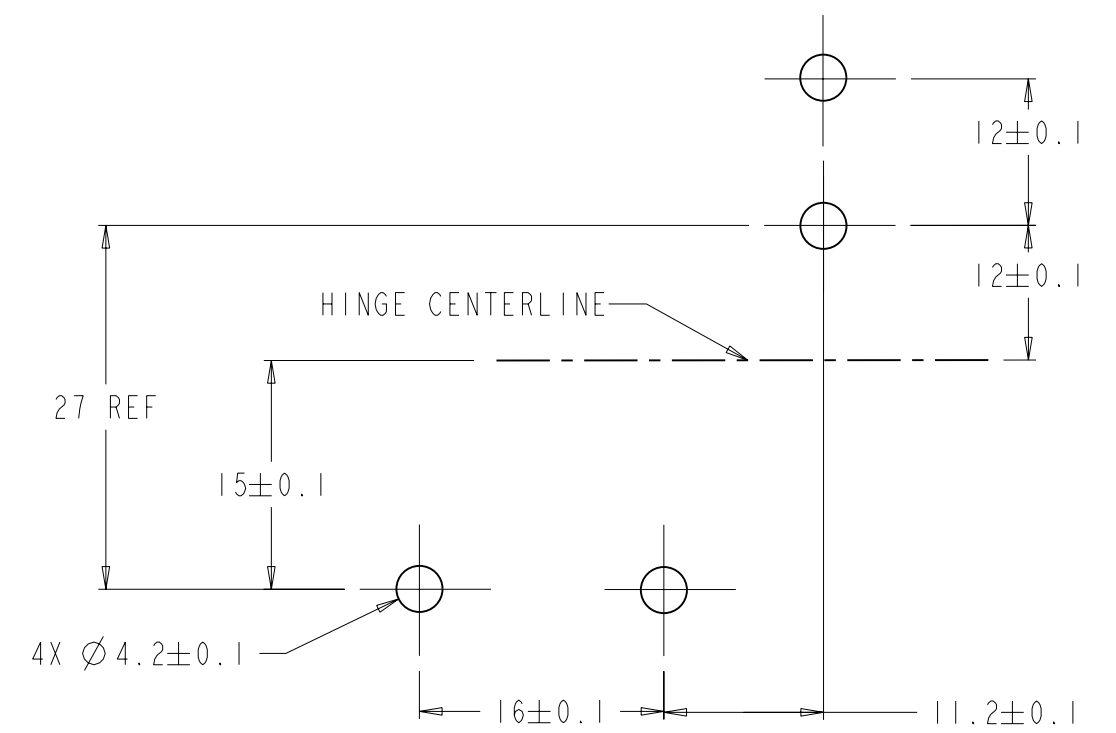


**TYPE B  
 (SHOWN DIMENSIONED)**

**TYPE A**



2X Ø 4.20 NATURAL  
 Ø 4.05 MIN BLACK POWDER COAT  
 Ø 8.0 NATURAL  
 7.6 MIN BLACK POWDER COAT  
 ▽ 4.2 BOTH SIDES



**PANEL PREPARATION**

PART NUMBER	DESCRIPTION	FINISH
ST-12A-XXXX-33	ASSEMBLY - AS CAST	NATURAL
ST-12A-XXXX-10	ASSEMBLY - COATED	WHITE POWDER COAT
ST-12A-XXXX-50	ASSEMBLY - COATED	BLACK POWDER COAT

PART NUMBER		STATIC TORQUE	
TYPE A	TYPE B	FORWARD (IN-LBF)	REVERSE (IN-LBF)
ST-12A-120SA-XX	ST-12A-120SB-XX	12	12
ST-12A-200SA-XX	ST-12A-200SB-XX	20	20
ST-12A-280SA-XX	ST-12A-280SB-XX	28	28
ST-12A-360SA-XX	ST-12A-360SB-XX	36	36
ST-12A-200FA-XX	ST-12A-200FB-XX	20	12*
ST-12A-280FA-XX	ST-12A-280FB-XX	28	16.8*
ST-12A-360FA-XX	ST-12A-360FB-XX	36	21.6*
ST-12A-440FA-XX	ST-12A-440FB-XX	44	26.4*
ST-12A-200RA-XX	ST-12A-200RB-XX	12*	20
ST-12A-280RA-XX	ST-12A-280RB-XX	16.8*	28
ST-12A-360RA-XX	ST-12A-360RB-XX	21.6*	36
ST-12A-440RA-XX	ST-12A-440RB-XX	26.4*	44

\*TOLERANCE IN LOW TORQUE DIRECTION ±30%

ALL DIMENSIONS  
 ARE IN MILLIMETERS  
 ALL DIMENSIONS  
 WITHOUT  
 TOLERANCES  
 ARE FOR  
 REFERENCE  
 ONLY

**southco®**

DESIGNED BY AS 10FEB06  
 APPROVED BY JM 10FEB06

MODEL NAME ST127-R  
 SCALE 2.000

3.2 ALL SURFACES EXCEPT AS NOTED

TITLE ST-12A HINGE ASSEMBLY	
DWG No J-ST-12A	REVISION D
MATERIAL AS NOTED	
CALC. WEIGHT	FORMAT C

## **X-ON Electronics**

Largest Supplier of Electrical and Electronic Components

*Click to view similar products for [southco manufacturer](#):*

Other Similar products are found below :

[C5-22-45](#) [E3-13-4](#) [24-20-412-35](#) [E3-59-52](#) [C5-34-35](#) [R4-EM-21-161](#) [44-99-222-71](#) [MF-02-210-60](#) [EA-A01-001](#) [E3-129-065](#) [C5-41-25](#)  
[MA-01-220-02-20](#) [E3-15-11](#) [R4-50-42-101-10](#) [E3-56-52](#) [01-13-51](#) [C5-23-45](#) [MA-01-220-01-10](#) [E3-15-12](#) [EA-W52-506-80](#) [97-50-260-11](#)  
[57-40-702-85](#) [C5-41-45](#) [C2-32-101](#) [E5-2-015-040](#) [EM-05-21-101](#) [E3-16-12](#) [AC-C0H0-4-0250-048](#) [E3-109-045](#) [N2-2-300-01-20](#) [E3-113-95](#)  
[44-T-1](#) [E3-31-31](#) [AC-C0H0-4-1250-048](#) [EM-05-11-100](#) [F6-23-S16AW](#) [68-50-301-20](#) [E3-122-045](#) [E3-105-075](#) [E5-9014](#) [P8-096-31-M4-11-3](#)  
[82-15-400-16](#) [PK-24-01](#) [R4-10-41-201-10](#) [97-50-230-12](#) [TM-10-101-24](#) [E3-38-25](#) [E3-105-095](#) [57-10-811-10](#) [97-50-320-12](#)