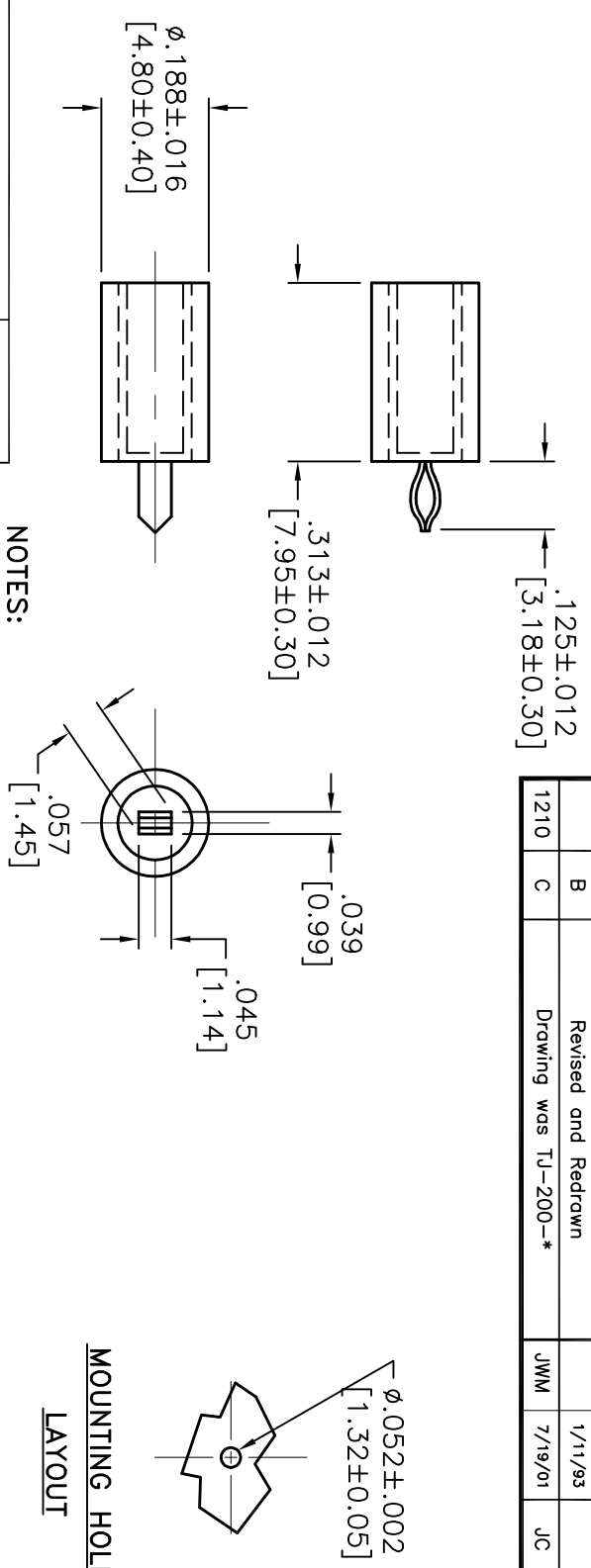


ALL RIGHTS RESERVED. NO PORTION OF THIS PUBLICATION, WHETHER IN WHOLE OR IN PART CAN BE REPRODUCED WITHOUT THE EXPRESS WRITTEN CONSENT OF SPC TECHNOLOGY.

REVISIONS		DOC. NO. SPC-F005	* Effective: 12/21/98	* DCP No: 880				
DCP #	REV	DESCRIPTION	DRAWN	DATE	CHECKD	DATE	APPRVD	DATE
1210	C	Drawing was TJ-200-*	JMM	7/19/01	JC	7/19/01	JC	7/19/01
	B	Revised and Redrawn		1/11/93			JL	



MOUNTING HOLE LAYOUT

PART NUMBER	COLOR
TJ-200-BK	BLACK
TJ-200-BL	BLUE
TJ-200-GR	GREEN
TJ-200-R	RED
TJ-200-W	WHITE

- NOTES:**
- MATERIAL: CONTACT: BERYLLIUM COPPER
PER QQ-C-533
BODY: NYLON 66 PER ASTM D4066
 - CONTACT FINISH: SILVER
 - CURRENT RATING: 5 AMPS
 - BREAKDOWN VOLTAGE: 3500 VRMS MIN.
 - CONTACT RESISTANCE: .010 OHMS MAX.
 - FLAMMABILITY: UL94V-2
SELF-EXTINGUISHING
 - CONTINUOUS USE TEMPERATURE: -40°F (-40°C) TO 185°F (85°C)
 - ADJACENT JACK CAP.: 1 pF MAX AT 1 MHZ
 - FOR STANDARD TIP PLUG: Ø.080"
 - SPRING LOADED.
 - CONTACT PROTECTED FROM FLUX AND SOLDER.
 - FORMED CONTACT.

DISCLAIMER:
ALL STATEMENTS AND TECHNICAL INFORMATION CONTAINED HEREIN ARE BASED UPON INFORMATION AND/OR TESTS WE BELIEVE TO BE ACCURATE AND RELIABLE SINCE CONDITIONS OF USE ARE BEYOND OUR CONTROL. THE USER SHALL DETERMINE THE SUITABILITY OF THE PRODUCT FOR THE INTENDED USE AND ASSUME ALL RISK AND LIABILITY WHATSOEVER IN CONNECTION THEREWITH.



Tolerances: Unless Otherwise Specified:		DRAWING TITLE:	
X = ±.015	XX = ±.010	XX = ±.010	XXX = ±.005
JP	1/11/93	TA-372	ELECTRONIC FILE
JC	1/14/93	TA-372.dwg	REV
JL	1/19/93		C

SIZE	DWG. NO.	SCALE:	NTS	SHEET:	1 OF 1
A	TA-372	U.O.M.:	INCHES [mm]		

X-ON Electronics

Largest Supplier of Electrical and Electronic Components

Click to view similar products for [tenma](#) manufacturer:

Other Similar products are found below :

[21-10164](#) [21-10158](#) [BC0024434](#) [72-7712](#) [76-009](#) [CBB019217](#) [CBB018722](#) [72-9170](#) [72-13668](#) [72-13686](#) [72-13688](#) [72-13736](#) [72-13742](#)
[72-13818](#) [72-13822](#) [72-13824](#) [72-13836](#) [72-13856](#) [72-13858](#) [72-13872](#) [72-13874](#) [72-13908](#) [72-13950](#) [72-13986](#) [72-14060](#) [72-14302](#) [72-3099](#) [76-1448](#) [76-1556](#) [76-019](#) [76-024](#) [76-1568](#) [21-670](#) [72-14400](#) [72-13762](#) [72-13826](#) [72-13832](#) [72-13888](#) [72-13942](#) [72-14008](#) [72-14014](#)
[72-14048](#) [72-14148](#) [72-14230](#) [72-17175](#) [72-2655](#) [72-7615](#) [76-1446](#) [76-022](#) [72-14425](#)