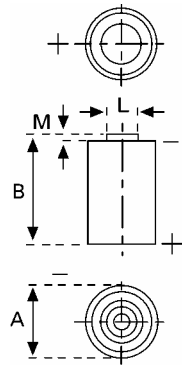


Data Sheet



Type Number 6117
Designation IEC ---
System Li-Manganese dioxide / Organic Electrolyte

UL Recognition:..... MH 13654 (N)
Nominal Voltage 3 V
Typical Capacity C 2000 mAh
 Load 1.0 kOhm, at 20°C down to 2 V

Weight (approx.) 21,5 g
Volume 8,5 ccm
Coding..... Date of Manufacturing Quarter/Year

Temperature Ranges

	min	max.
Storage	-55°C	75 °C
Discharge	-30°C	75°C

Dimensions

	min	max.
Diameter (A)	14,45	14,75
Height (B)	49,5	50,5
Shoulder Diameter[L]	7	
Shoulder Height [M]	0,6	

Segment Electronic

Main Applications Electronic

Typical Capacities (at 20°C)

Discharge Type	Load	End Voltage:	2.0 V
Continuous 24h/d,7d/w	1000 Ω	Time:	745 h
		Capacity [mAh]:	2000
		Energy [mWh]:	5600
Discharge Type	Load	End Voltage:	2.0 V
Continuous 24h/d,7d/w	620 Ω	Time:	430 h
		Capacity [mAh]:	1850
		Energy [mWh]:	5000

All Data contained herein is for single cells

For battery applications, performance data may vary from single cell data, depending on specific battery configuration

X-ON Electronics

Largest Supplier of Electrical and Electronic Components

Click to view similar products for [varta manufacturer](#):

Other Similar products are found below :

[56456 702 099](#) [18750](#) [4610 726 406](#) [4122 210 511](#) [LCD-CHARGER + 4XAA 2400MAH](#) [449915B](#) [4607 726 406](#) [55171403014](#)
[55625603059](#) [55615602940](#) [4112101411](#) [4 022 211 111](#) [4 106 101 436](#) [4 020 211 111](#) [MINI CHARGER + 2XAA 2100MAH](#) [MINI-CHARGER](#) [17730](#) [LCD-SMART-CHARGER](#) [414086X](#) [POCKET-CHARGER + 4XAA 2100MAH](#) [458980A](#) [LCD MULTI CHARGER](#)
[CG511-150-PB](#) [EE UNIVERSAL CHARGER](#) [CG401D-050-PB](#) [CG511-050-PB](#) [CU303-018-PB](#) [CG381D-G-100-PB](#) [413675G](#) [CU202-030-PB](#) [55615603059](#) [CG381D-G-150-PB](#) [CG481G-050-PB](#) [CU303-030-PB](#) [CG511D-030-PB](#) [CA317-PB](#) [CG511D-100-PB](#) [CU201G-B-030-PB](#)
[095668F](#) [4600 726 406](#) [CG511-030-PB](#) [CA418-PB](#) [CG481G-030-PB](#) [CG511D-150-PB](#) [CG381D-G-050-PB](#) [CU302-030-PB](#) [CG341-030-PB](#)
[CU201G-B-050-PB](#) [CA089-PB](#) [CU202G-B-030-PB](#)