

REVISIONS	
REV	ECN, ERN NO.
F	PRODUCT DRAWING (EAR 14157) APR26/13 K.L.

ORDERING CODE: F C E 1 7 - E 0 9 S B - 4 E 0 G

SERIES
 FCE17=FILTERED D=SUB, ROHS
 SIZE/NUMBER OF CONTACTS
 E09, A15, B25, OR C37
 CONNECTOR STYLE
 P=PIN
 S=SOCKET
 TERMINATION TYPE
 B=.405" [10.29] FOOTPRINT
 MOUNTING
 3=#4-40 UNC SELF-LOCKING THREAD
 2=#4-40 UNC THREAD
 1=#4-40 UNC THREAD
 6=M3 x 0.5 THREAD
 E=CODE 4 MOUNTING WITH #4-40 UNC
 HEX JACK SOCKET SUPPLIED.
 F=#4-40 UNC THREAD IN
 Ø.187 [Ø4.75] FIXED JACK SOCKET

FILTER CAPACITANCE
 D=50 pF
 B=100 pF
 6=1500 pF
 T=220 pF
 J=1500 pF
 F=330 pF
 L=380 pF
 9=5600 pF
 1=470 pF
 2=680 pF
 4=820 pF

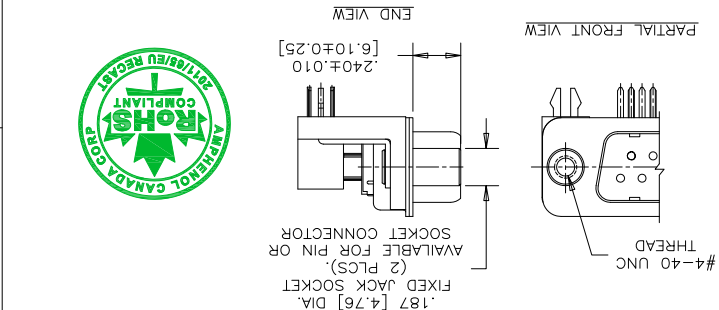
NO DIGIT=STANDARD 15 MICRONS
 [0.38 MICRONS] GOLD ON
 MATING AREA
 G=50 MICRONS [1.27 MICRONS]
 GOLD ON MATING AREA
 MODIFIER
 0=STANDARD

CONTACT FINISH/GOLD THICKNESS

NO DIGIT=STANDARD 15 MICRONS
 [0.38 MICRONS] GOLD ON
 MATING AREA
 G=50 MICRONS [1.27 MICRONS]
 GOLD ON MATING AREA
 MODIFIER
 0=STANDARD

FILTER CAPACITANCE
 D=50 pF
 B=100 pF
 6=1500 pF
 T=220 pF
 J=1500 pF
 F=330 pF
 L=380 pF
 9=5600 pF
 1=470 pF
 2=680 pF
 4=820 pF

REFER TO AMPHENOL CATALOGUE FOR
 FILTER PERFORMANCE CHARACTERISTICS



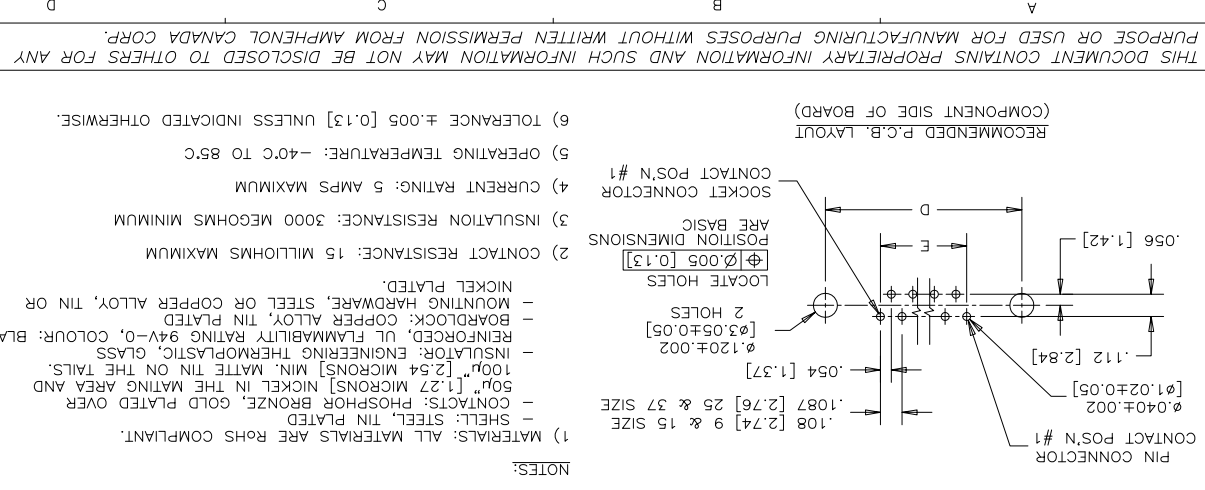
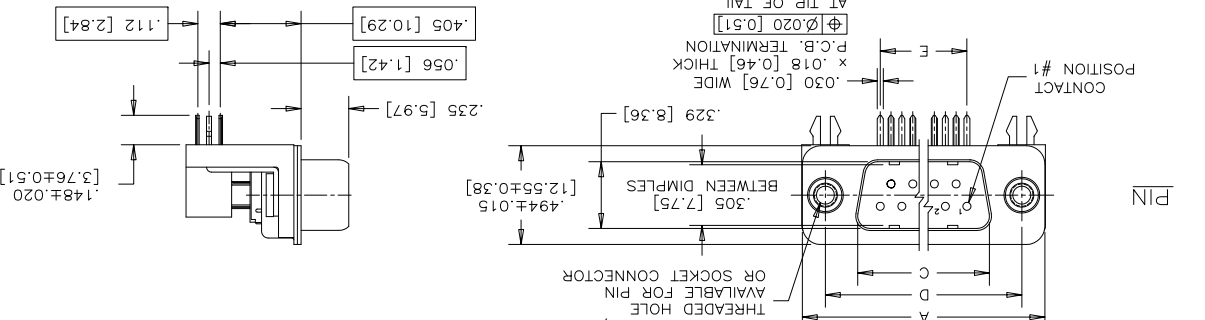
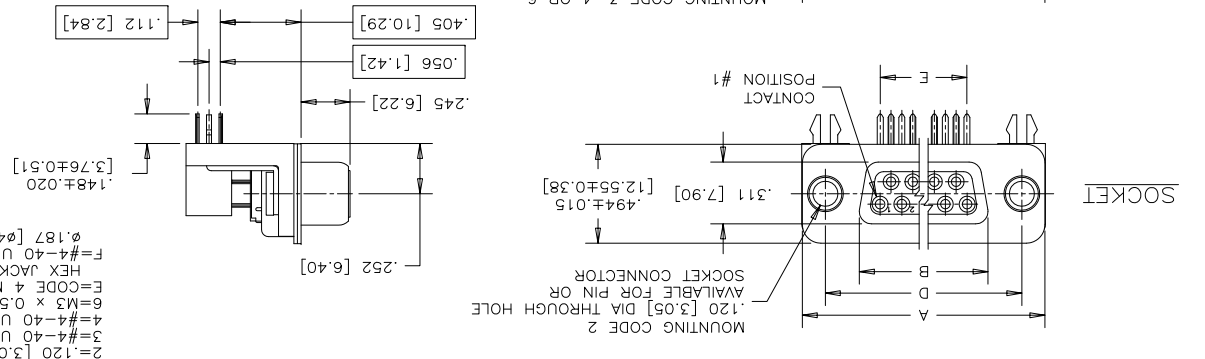
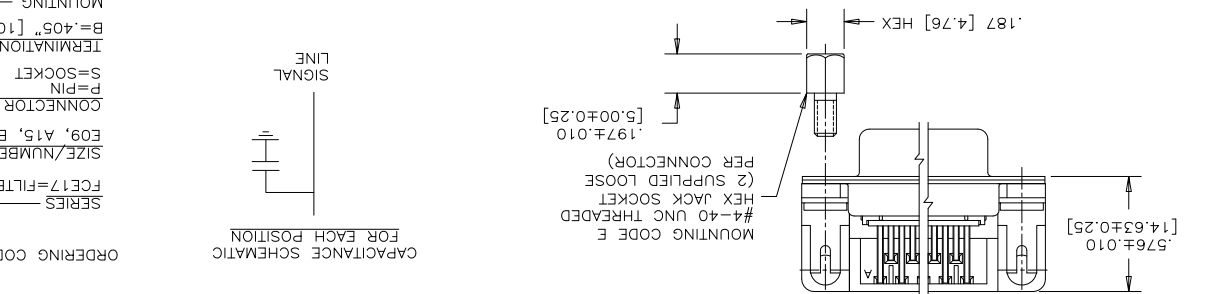
SIZE	STYLE	±.015	±.005	±.005	±.005	E BSC.
E09	PIN	1.213	[30.81]	1.213	.984	[10.97]
	SOCKET	.643 [16.53]	.994 [25.25]	1.312	1.312	[7.56]
A15	PIN	1.541	.971 [24.66]	1.312	1.312	[19.20]
	SOCKET	[39.14]	.971 [24.66]	1.312	1.312	[19.20]
B25	PIN	2.088	1.534 [38.96]	1.852	1.852	[33.12]
	SOCKET	[53.04]	1.511 [38.38]	1.852	1.852	[33.12]
C37	PIN	2.729	2.159 [54.84]	2.500	2.500	[149.68]
	SOCKET	[69.32]	2.182 [55.42]	2.500	2.500	[149.68]

DATE	DEC19/05
DESIGNED	S.BUENAVIDES
CHECKED	K.LAMBIE
L. E. APPRD.	
Q. A. APPRD.	
DWG. APPRD.	
ENG. REL. NO.	
REF. EAR 12892	
DIMENSIONS ARE IN INCHES [mm]	0354
SCALE	2/1
WT.	
SURF.	
SHEET	1 OF 1

Amphenol Canada Corp.

FCE17 SERIES FILTERED D-SUB CONNECTOR,
 PIN & SOCKET, RIGHT ANGLE .405 [10.29] F/P,
 PLASTIC BRACKET & BOARDLOCK, ROHS COMPLIANT

DWG. DRAWING NO. P-FCE17-XXXXB-XXOX



NOTES:

- 1) MATERIALS: ALL MATERIALS ARE ROHS COMPLIANT.
- 2) CONTACT RESISTANCE: 15 MILLIOHMS MAXIMUM
- 3) INSULATION RESISTANCE: 3000 MEGOHMS MINIMUM
- 4) CURRENT RATING: 5 AMPS MAXIMUM
- 5) OPERATING TEMPERATURE: -40°C TO 85°C
- 6) TOLERANCE ±.005 [0.13] UNLESS INDICATED OTHERWISE.

1) MATERIALS: ALL MATERIALS ARE ROHS COMPLIANT.
 SHELL: STEEL, TIN PLATED
 CONTACTS: PHOSPHOR BRONZE, GOLD PLATED OVER
 50µ" [1.27 MICRONS] NICKEL IN THE MATING AREA AND
 100µ" [2.54 MICRONS] MIN. MATTE TIN ON THE TAILS.
 INSULATOR: ENGINEERING THERMOPLASTIC, GLASS
 REINFORCED, UL FLAMMABILITY RATING 94V-0, COLOUR: BLACK
 BOARDLOCK: COPPER ALLOY, TIN PLATED
 MOUNTING HARDWARE, STEEL OR COPPER ALLOY, TIN OR
 NICKEL PLATED.

THIS DOCUMENT CONTAINS PROPRIETARY INFORMATION AND SUCH INFORMATION MAY NOT BE DISCLOSED TO OTHERS FOR ANY PURPOSE OR USED FOR MANUFACTURING PURPOSES WITHOUT WRITTEN PERMISSION FROM AMPHENOL CANADA CORP.

X-ON Electronics

Largest Supplier of Electrical and Electronic Components

Click to view similar products for [D-Sub Standard Connectors](#) category:

Click to view products by [Amphenol](#) manufacturer:

Other Similar products are found below :

[DCM37S732N](#) [DAM15P500](#) [DEV09S364GTLF](#) [DEM09P032N](#) [DDM50P732N](#) [DAM15S332N](#) [173109-2218](#) [173109-2466](#) [173109-2436](#)
[173109-2435](#) [56F706-005-LI](#) [56F711-015](#) [015-0341-000](#) [015-0372-008](#) [015-8544-011](#) [017041-0005](#) [020419-0104](#) [012-0515-000](#) [012-9507-](#)
[034](#) [012-9507-114](#) [012-9534-001](#) [020745-0008](#) [609-25P](#) [M24308/2-23Z](#) [M243082310F](#) [M243082410F](#) [M243082411F](#) [M24308/4-21](#)
[CT1A18-11PSA206](#) [CT1N36-5SC](#) [CT2-16S-17PS](#) [CT2-20-15PCAU](#) [CT2-24-12PS](#) [CT2-24-28PSF127A206](#) [CT2-32-9PC](#) [CT6F9767-14-4-](#)
[14S-5PC](#) [CT6FA10SL-4PS](#) [CT7-18-10SC](#) [CT7-18-10SCAU](#) [CT7-18-12SCAU](#) [CT7-18-1PC](#) [CT7-18-1PCAU](#) [CT7-18-21SCAU](#) [M83513/01-](#)
[FC](#) [M83723/76W24619 L/C](#) [M85049/48-3-2F](#) [69001-865](#) [6STD09PCM99B70X](#) [6STD09SCM99B30X](#) [6STD09SCT99S40X](#)