

IRON POWDER SURFACE MOUNT FIXED INDUCTOR

TYPE FDA1254

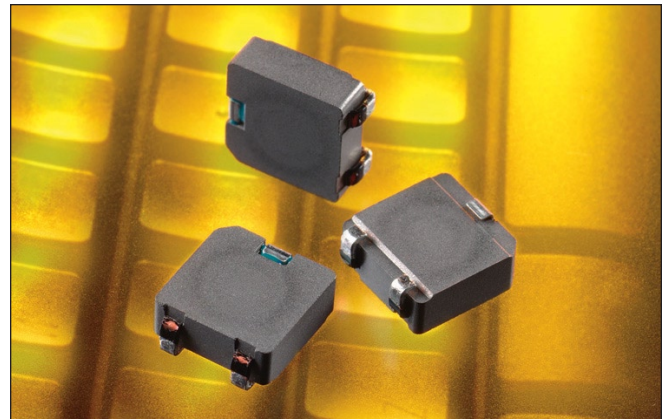
Inductance Range: 0.68 - 8.0μH
Frequency Range: 0.1 - 5MHz

Description

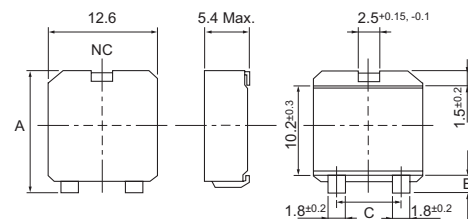
The TOKO FDA1254 Series is a compact, high-current surface mount fixed inductor with a maximum DC current rating of 23 Amps. Manufactured with a proprietary iron powder composition and process, the product is specifically designed for high current, space constrained DC-DC converter applications in portable computing, point-of-load modules, and computer peripherals.

Features

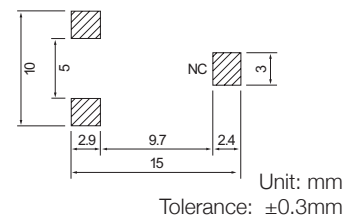
- Compact size: 13.8mm x 12.9mm
- Low profile: 5.4mm maximum
- High DC current: 23.7A at 0.68μH
- Magnetically shielded
- Low DC resistance
- Low audible noise
- Reflow solderable
- Packaged on 500 piece reels
- Lead-free terminations



Dimensions & Recommended Patterns:



TOKO Part No.	A	B	C
FDA1254-R68M=P3	13.5	1.8	7.7
FDA1254-1R0M=P3	13.5	1.8	7.7
FDA1254-1R2M=P3	13.5	1.8	7.7
FDA1254-2R2M=P3	13.2	1.5	7.6
FDA1254-3R3M=P3	12.9	1.2	7.6
FDA1254-4R7M=P3	12.9	1.2	7.6
FDA1254-8R0M=P3	12.9	1.2	7.6



STANDARD PARTS SELECTION GUIDE

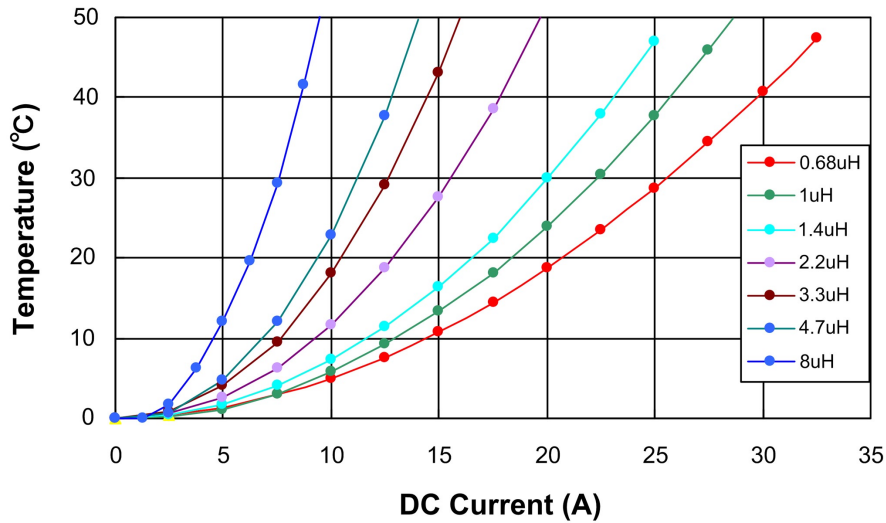
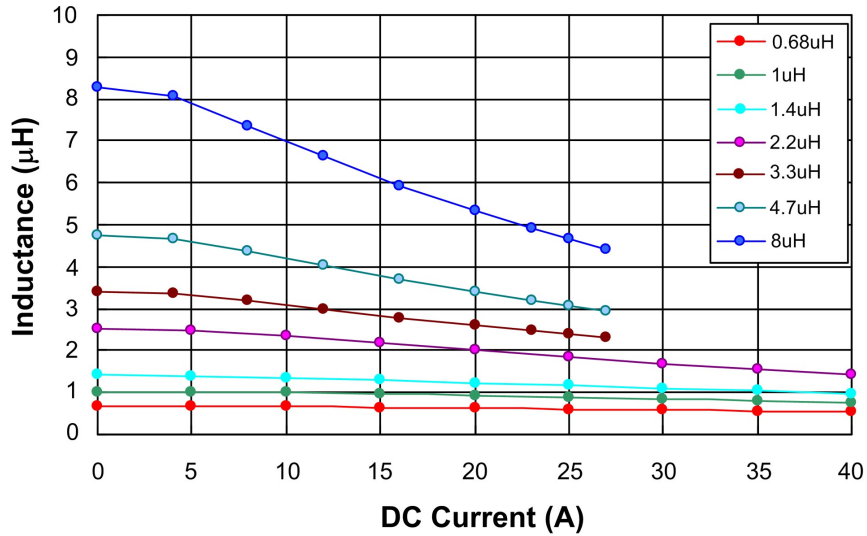
- (1) Inductance is measured by LCR-meter 4284A (Agilent) or equivalent.
- (2) DC resistance is measured by Digital Multimeter 34420A (Agilent) or equivalent.
- (3) Maximum allowable DC current is that which causes a 20% inductance reduction from the initial value, or coil temperature to rise by 40°C, whichever is smaller. (Reference ambient temperature 20°C).

TYPE FDA1254

TOKO Part Number	Inductance ⁽¹⁾ (μH)	Tolerance (%)	Test Freq. (kHz)	DC ⁽²⁾ Resistance (mΩ) max.	Inductance ⁽³⁾ Decrease Current [-20%] (A) max.	Temperature ⁽³⁾ Rise Current [+40°C] (A) max.	Absolute Max. Voltage (V)
FDA1254-R68M=P3	0.68	±20	100	1.5	29.1	23.7	30
FDA1254-1R0M=P3	1.0	±20	100	2.0	25.2	20.5	30
FDA1254-1R2M=P3	1.2	±20	100	2.6	20.2	18.4	30
FDA1254-2R2M=P3	2.2	±20	100	4.5	14.7	14.2	30
FDA1254-3R3M=P3	3.3	±20	100	7.0	13.1	11.5	30
FDA1254-4R7M=P3	4.7	±20	100	8.8	11.2	10.2	30
FDA1254-8R0M=P3	8.0	±20	100	16.0	9.1	7.1	30

Note: =P3 is added to each part number to indicate tape and reel packaging.

TYPICAL CHARACTERISTICS



The information furnished by TOKO, Inc. is believed to be accurate and reliable. However, TOKO reserves the right to make changes or improvements in the design, specification or manufacture of its products without further notice. TOKO does not assume any liability arising from the application or use of any product or circuit described herein, nor for any infringements of patents or other rights of third parties which may result from the use of its products. No license is granted by implication or otherwise under any patent or patent rights of TOKO, Inc.

X-ON Electronics

Largest Supplier of Electrical and Electronic Components

Click to view similar products for [murata](#) manufacturer:

Other Similar products are found below :

[786028C](#) [MGJ1D121905MPC-R7](#) [MGJ2D051515SC](#) [82103C](#) [82224C](#) [82473C](#) [GCM32EC71H106MA03L](#) [GRM2165C1H101FA01D](#)
[PTGL09AS2R2K3B51B0](#) [11R683C](#) [DD1274AS-H-220M=P3](#) [DFE252012P-1R0M=P2](#) [BL02RN1R2P1A](#) [BPM15-120-Q12P-C](#) [NMK1212SC](#)
[NMV1212DAC](#) [LQH43MN330J03L](#) [GJM0335C1E220GB01D](#) [GRM1885C1H150FA01J](#) [RF1211C](#) [MGJ2D121509SC](#) [MGJ6D122005LMC-](#)
[R7](#) [#B953AS-330M=P3](#) [BLM18AG601SN1J](#) [HN-214](#) [HN-214X](#) [TZ03P450](#) [UEE-12/12.5-D48NB-C](#) [LBWB1ZZYDZ-DTEMP-SNIC-](#)
[UART-A](#) [LLM315R70J225MA11L](#) [46334C](#) [DR4103](#) [SCA830-D07-PCB](#) [NKE1212DC](#) [NMA1215SC](#) [UVQ-48/2.5-D24PB-C](#) [IML-0642](#)
[HPR105C](#) [HPQ-12/25-D48PB-C](#) [UWS-5/10-Q48N-C](#) [UWR-5/2000-D24E-C](#) [UHE-152000-D24-C](#) [782485/35C](#) [UEI-3.3/15-Q12PR-C](#)
[MGJ2D242005SC](#) [MEV1S0505SC](#) [MEMS-EVAL-BOARD](#) [MEJ2D0512SC](#) [MEE3S1215SC](#) [MEE1S1509SC](#)