

**Features:**

- High segment intensity
- Extra wide viewing angle - almost 180° 'actual' viewing
- Single or multiple digit modules by interlocking
- Lightweight - less than 0.5 kg

- Very thin in cross section - 15 mm depth
- Interlock dovetails have a light friction fit between units for ease of assembly
- Grey face colour, White segment colour
- Low power consumption
- Characters can be viewed from distances up to 150 metres

**Font design**

Product not shown  
actual size



**Electro/Optical Characteristics - I<sub>F</sub> = 80 mA/segment 20 mA DP (\*B05 & G05 I<sub>F</sub> = 40 mA/segment 10 mA DP) T<sub>a</sub> = 25° C**

Part Number - Common Cathode		Part Number - Common Anode		Emitting Colour	Wavelength Peak λ <sub>P</sub>	Forward Voltage V <sub>F</sub>		Luminous Intensity I <sub>V</sub>	
Farnell	Forge Europa	Farnell	Forge Europa			typical	max	min	typical
366-5320	FEM-7901R0300GW	366-5331	FEM-7902R0300GW	GaAlAs Red	660	10.50	12.50	-	144
366-5343	FEM-7901R0100GW	366-5355	FEM-7902R0100GW	GaAlAs Red	660	9.25	10.00	-	96
366-5367	FEM-7901G0100GW	366-5379	FEM-7902G0100GW	Green	568	10.50	12.50	-	48
366-5380	FEM-7901G0500GW	366-5392	FEM-7902G0500GW	* HE Green	518	16.50	18.50	-	144
366-5409	FEM-7901B0500GW	366-5410	FEM-7902B0500GW	* HE Blue	465	16.50	18.50	-	96
Units					nm	V		mcd per segment	

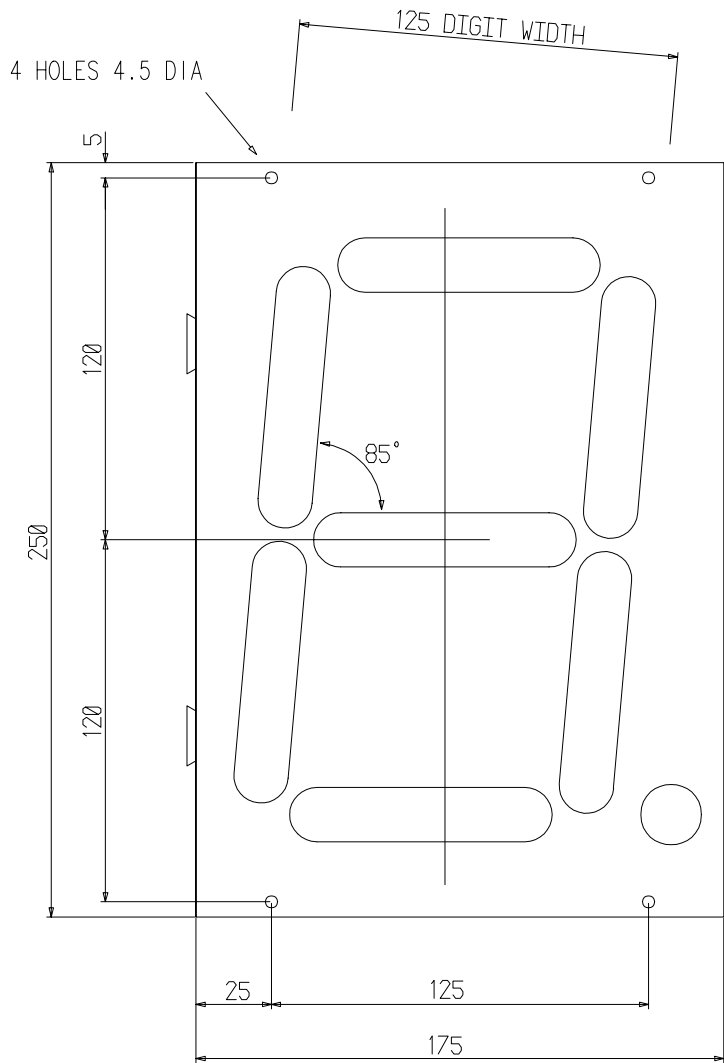
**Maximum Ratings T<sub>a</sub> = 25° C - Derate above 25° C**

Characteristic	Condition	Symbol	Rating	Units
Pulse Forward Current	0.1 duty cycle @ 1KHz ( B05 & G05 )	I <sub>FP</sub>	400 (140)	mA
DC Forward Current	( B05 & G05 )	I <sub>F</sub>	100 (60)	mA
Reverse Voltage	I <sub>R</sub> = 100 μA	V <sub>R</sub>	20	V
Power Dissipation		P <sub>D</sub>	340	mW
Operating Temperature		T <sub>opr</sub>	- 25 to + 80	° C
Storage Temperature		T <sub>stg</sub>	- 30 to + 85	° C
Lead soldering temperature	1.6 mm from body - max 3 seconds		260	° C

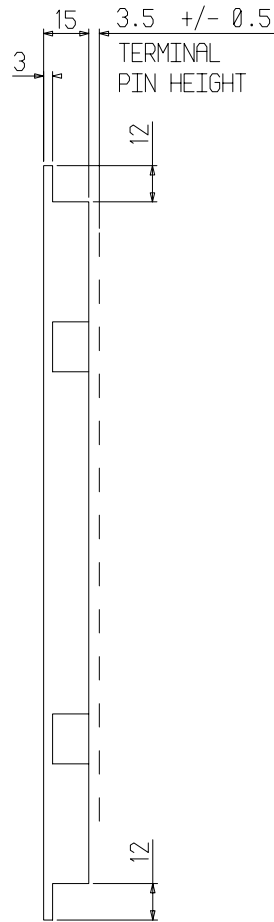
**Note**

Industry standard procedures regarding static must be observed when handling product produced with blue and green (518nm) die material.

**Package Outline and Diagram**

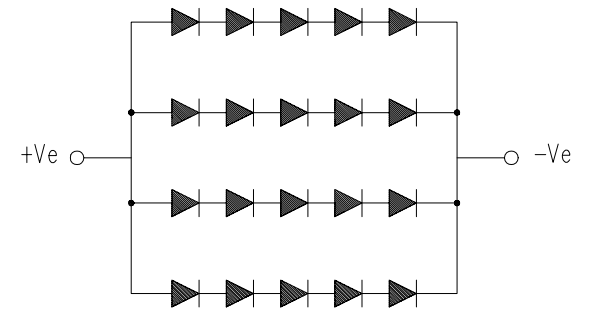


GEN TOL  
+/- 0.25



Tolerance  
± 0.25 mm unless stated

SEGMENT DIAGRAM



DP DIAGRAM



NOTE  
EACH SEGMENT AND THE DP HAS  
2 - 0.6 SQ TERMINALS (REAR CENTRE)

## X-ON Electronics

Authorized Distributor

*Click to view similar products for [Forge Europa](#) manufacturer.*

Other Similar products are found below :

[FCLP5DR078G03B12WCCI](#) [FELF115B15V12](#) [FELF115R2112V12](#) [FELF115W28V12](#) [FN10311B2300GW](#) [FN10312B2300GW](#)  
[FN10392B230JGW](#) [FN10562B230SGW](#) [FN10801B230SGW](#) [FN10802B220SGW](#) [FN10802B230SGW](#) [FNLU300B22CDSL](#)  
[FNLU300B22WCSL](#) [FNLU300B23CDSL](#) [FNLU300B23WCSL](#) [FNLU500B22CDSL](#) [FNLU500B22WCSL](#) [FNLU500B23CDSL](#)  
[FNLU501B22WCSL](#)