



E-Z-Code®

EZL-100 Thermal Label Printer

EZ as 1-2-3...press, type, and print!

E-Z-Code®

EZL-100® Thermal Label Printer

- One-touch hotkeys create labels instantly for wire wrapping, terminal blocks, device covers, patch panels, and labels in a series
- Symbols for common electrical and datacom applications, including ohm, ground, phone, data, and fax
- Five print sizes including XS, S, M, L, and XL
- Horizontal and vertical print orientation
- Automatically underlines the number 9 to prevent confusion on wire and cable
- Memory stores up to eight custom labels and automatically recalls last label
- Auto-shutoff saves battery life by turning printer off after five minutes (if idle)
- Backlit display can be turned on or off for use in low lighting conditions
- Multiple line printing of up to four lines per label
- Barcode printing of two of the most commonly used barcodes — Code-39 and Code-128
- Durable/non-smearing thermal transfer technology
- Multiple power sources uses six "AA" batteries or AC adapter (not included)
- Large display with 2-line x 15-character views (30 total)



A Large, Backlit Display

B One-Touch Hot Keys

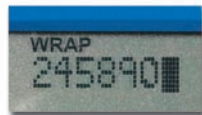
C Electrical and Datacom Symbols

D Rugged Printer Construction with Rubber Boot Included

1 Press



2 Type



3 Print



...and that's it!



At last, a label printer designed for electricians and the way they work! T&B's new EZL-100 Label Printer packs everything you need to make wire marking fast and simple.

T&B's EZL-100 printer features handy "Hot Keys," a one-touch method to make labels for wire wrapping, patch panels, labels in a series, terminal blocks, and more. There are also common electrical and datacom symbols at your touch. And its rugged design ensures years of use.

Best of all, our permanent-adhesive labels won't smear. You'll wrap up your job with attractive, easy-to read wire labels that'll make your work easier and safer. All for a price that's easy on your wallet.

Specifications

- Dimensions: 4.5" (114mm) W x 8.3" (212mm) H x 2.8" (70mm) D
- Power: 9V DC, using 6 "AA" batteries or AC adapter
- Weight: 2.0 lbs. (890 grams)

CAT. NO.	DESCRIPTION
EZL-100	Printer (includes (1) 3/4" white nylon, quick-load cassette tape, quick start card, and user manual). AC power adapter not included
EZL-100-Kit	Kit (includes EZL-Case, EZL-100 Printer (1), EZ-MP34 (1) and EZ-WN34, (1) tape, EZL-ADP adapter, and batteries
EZL-Case	Hard Case for EZL-100 Printer
EZL-ADP	Adapter for EZL-100 Printer 9V, 1.5A

Thomas & Betts

www.tnb.com

United States
Tel: 901.252.8000
800.816.7809
Fax: 901.252.1354

Canada
Tel: 450.347.5318
Fax: 450.347.1976

Technical Services
Tel: 888.862.3289

E-Z-Code®

EZL-75 Thermal Label Printer and EZL Printer Labels

Quick and cost-effective labeling solution!

EZL-75 Thermal Label Printer

If your labeling needs don't quite justify all the high-end features of T&B's EZL-100, now there's a lower cost solution for simple labeling. The EZL-75 thermal label printer is just as easy to use as the EZL-100. Simply type and print. Or don't even bother typing. Instead, use hot keys to choose among the EZL-75's built-in library of symbols and more than 150 commonly used words for security, location and voice/data/video labeling.



- Hot keys provide one-touch flagging for wires and cables and fixed-length labels for faceplates and security panels
- Incremental alpha and numeric printing makes printing distribution panel labels fast and simple
- 13-character backlit display enhances readability
- Multiple line printing supports up to 2 lines per label
- Durable bumper safeguards against damage in the tool box
- Uses the same label cassettes (up to 1/2" width) as EZL-100

Specifications

- Dimensions: 4.5" (114mm) W x 7.5" (191mm) H x 2.1" (53mm) D
- Weight: 0.8 lbs. (363 grams)
- Power: 9V DC, using 6 "AA" (not included) batteries or AC adapter

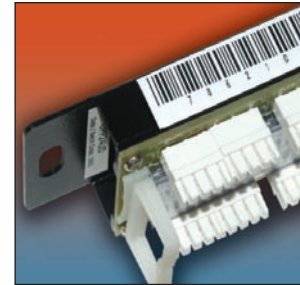
CAT. NO.	DESCRIPTION
EZL-75	Printer (includes (1) 1/2" white nylon quick-load cassette tape, quick start card, and user manual. AC power adapter not included)
EZL-ADP	Adapter for EZL-75 Printer 9V, 1.5A

Surface Applications		Vinyl and Flex Nylon	Perm. Polyester	Heat Shrink
Wire		•		•
Cable		•		•
Curved		•		
Smooth		•	•	
Flat		•	•	
Textured		•	•	
Highly Textured		•		
Length		11.5'	18.0'	5.0"
Width		1/2", 3/4"	3/8", 1/2"	1/4", 3/8"
		3/4"	3/4"	1/2", 3/4"

High-performance labels that last!

Wire Marker Labels for EZL Printers

- Perfect for wire and cable
- Print heat-shrink sleeves on the spot!
- Clear, non-smudging lettering
- Chemical/solvent resistant
- Available in yellow, white, and metallic markers
- Flame retardant, Polyolefin material, 3:1 shrink ratio
- Easy-to-peel, split-back design



Easy barcode printing!

E-Z-Code®

CAT. NO.	LABEL SIZE (IN.)	RECOMMENDED WIRE SIZE (AWG)	LENGTH
Clear Polyester			
EZ-CP12	1/2"	Flat Applications Only	18'
EZ-CP34*	3/4"	Flat Applications Only	18'
Red Vinyl			
EZ-RV34*	3/4"	Any	18'
White Permanent Polyester			
EZ-WP38	3/8"	Flat Applications Only	18'
EZ-WP12	1/2"	Flat Applications Only	18'
EZ-WP34*	3/4"	Flat Applications Only	18'
Metallic Permanent Polyester			
EZ-MP38	3/8"	Flat Applications Only	18'
EZ-MP12	1/2"	Flat Applications Only	18'
EZ-MP34*	3/4"	Flat Applications Only	18'
White Flexible Nylon			
EZ-WN12	1/2"	Any	12.5'
EZ-WN34*	3/4"	Any	12.5'
Yellow Flexible Nylon			
EZ-YN12	1/2"	Any	12.5'
EZ-YN34*	3/4"	Any	12.5'
Heat-Shrink White Polyolefin Labels			
EZ-WHS14	1/4"	10 – 16	5'
EZ-WHS38	3/8"	6 – 14	5'
EZ-WHS12	1/2"	4 – 6	5'
EZ-WHS34*	3/4"	2 – 4	5'
Heat-Shrink Yellow Polyolefin Labels			
EZ-YHS14	1/4"	10 – 16	5'
EZ-YHS38	3/8"	6 – 14	5'
EZ-YHS12	1/2"	4 – 6	5'
EZ-YHS34*	3/4"	2 – 4	5'

Order in multiples of 5 cassettes.
* Labels fit EZL-100 only.

United States
Tel: 901.252.8000
800.816.7809
Fax: 901.252.1354

Canada
Tel: 450.347.5318
Fax: 450.347.1976

Technical Services
Tel: 888.862.3289

Thomas&Betts

www.tnb.com

H-5

X-ON Electronics

Largest Supplier of Electrical and Electronic Components

Click to view similar products for [Wire Identification category](#):

Click to view products by [ABB manufacturer](#):

Other Similar products are found below :

[CU6337-000](#) [CU6342-000](#) [FCA-410-12](#) [11631010](#) [1-1768037-1](#) [1-1768037-2](#) [1-1768050-0](#) [PXLK-VI](#) [Q62184-1](#) [A64304-000](#) [QMT221](#)
[HK032WE1NF038B](#) [1330-0519-10](#) [1395199-1](#) [1395200-1](#) [1395202-1](#) [DMVF050WE-300S6](#) [D-SCE-1K-2.4-50-4-CS7834](#) [1538738-1](#)
[E90935-000](#) [EC1238-000](#) [EC1465-000](#) [EC1855-000](#) [EC1859-000](#) [EC1863-000](#) [EC5415-000](#) [EC7277-000](#) [EC7352-000](#) [EC7603-000](#)
[EC7707-000](#) [EC7735-000](#) [EC7768-000](#) [EC7828-000](#) [EC7854-000](#) [EC7952-000](#) [EC8128-000](#) [1768037-8](#) [1768041-7](#) [NC-127191-10-9](#)
[HS048WE2NF038B](#) [C03232-000](#) [HTCM-SCE-14-4H-9](#) [HTMS-3/16-9](#) [HT-SCE-1/4-2.0-4](#) [HT-SCE-3/16-2.0-4](#) [HTTMS-1/2-1.50-9](#) [HTTMS-](#)
[CM-1/2-4H-9](#) [HX-SCE-19.0-50-9](#) [HX-SCE-6.4-50-4](#) [C25254-000](#)