

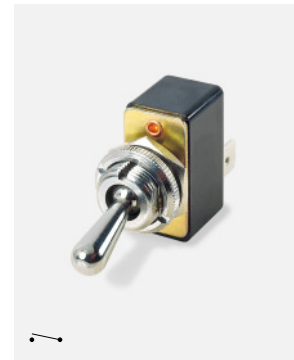
# 0600 Lever Switches 1A 250Vac

**In house test** 1A 250Vac  
10A 6/24Vdc

3mm contact gap  
Technical data on pages 4 & 5



C0600HD - - -



C0600CC - - -

**C 0600 H D - - -**

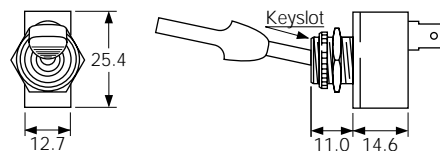
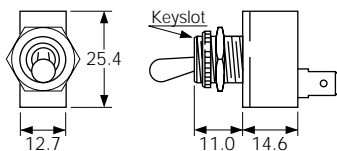
TERMINAL    FUNCTION    ACTUATOR    BODY    OPTIONS

▶ TERMINAL	▶ FUNCTION	▶ ACTUATOR	▶ BODY	▶ OPTIONS
<p><b>C</b></p> <p>6.3 x 0.8</p>	<p><b>0600</b></p> <p>ON - OFF</p> <p><b>0602</b></p> <p>ON - OFF (momentary ON)</p>	<p><b>C</b> Chromed brass (0600)</p> <p>15.0</p> <p><b>U</b> Nylon (0600)</p> <p>12.1</p> <p><b>G</b> Nylon (0600)</p> <p>27.0</p> <p><b>H</b> Nylon (0600)</p> <p>17.0</p> <p><b>S</b> Chromed brass stem/ nylon paddle (0602 only)</p> <p>41.8</p>	<p><b>D</b> Nylon neck and top plate (Used with actuator codes U, G and H)</p> <p><b>C</b> Metal neck and top plate (Used with actuator codes C and S)</p> <p>Panel thickness - 3.5mm Back nut must be fitted</p> <p><b>Fixing nuts</b> (Standard is M506 &amp; T92)</p> <p><b>T5</b> Hex brass</p> <p>15.2</p> <p><b>M506</b> Hex nylon</p> <p>3.0 (M506) 2.0 (T5)</p> <p><b>T92</b> Knurled brass</p> <p>16.0</p> <p><b>M279</b> Knurled nylon</p> <p>16.2</p> <p>4.1</p>	<p><b>Cover M331</b> (C Actuator only)</p> <p><b>Seal M539</b> (C,H &amp; U Actuators) Actuator visible</p> <p><b>Cover M1080</b> (C Actuator only)</p> <p>Covers have internal nylon nuts</p>

## Dimensions (mm)

**0600** (U actuator shown)

**0602**

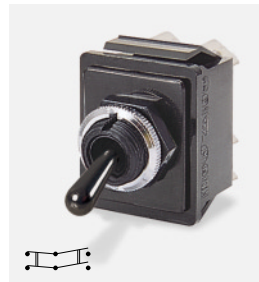




C1700RO ---



C1700HO ---



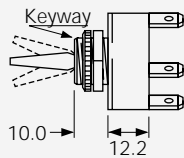
C1760RO ---



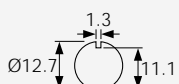
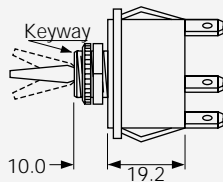
C1750HO ---

**BODY**

**0**  
Single pole



**0**  
Double pole



Panel hole (all types)  
Panel thickness (Max)  
Both nuts - 3.5mm  
Less backnut - 6.5mm

**OPTIONS**

**Neck Seal M539**  
Rubber -57T145  
(H & R Actuators)  
Actuator visible



**Cover M1080**  
Rubber -57T145  
(R Actuator only)



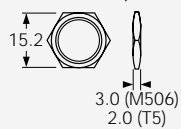
**Cover M331**  
PVC -5T85  
(R Actuator only)



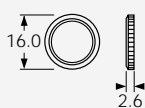
Covers have internal nylon nuts

**Fixing nuts** (Standard is M506 & T92)

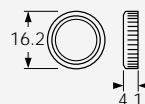
T5 Hex brass  
M506 Hex nylon



T92 Knurled brass



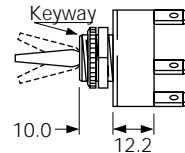
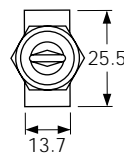
M279 Knurled nylon



**DIMENSIONS (mm)**

**Single Pole**

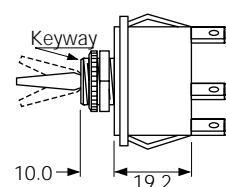
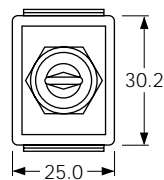
(C terminals shown)



Optional  
P232 plate  
SP or DP

**Double Pole**

(C terminals shown)



Optional terminal barrier M441 is available

## X-ON Electronics

Largest Supplier of Electrical and Electronic Components

*Click to view similar products for [arcoelectric](#) manufacturer:*

Other Similar products are found below :

[F0167LOAAA](#) [H8300ABBB](#) [H8550XBDDR076R](#) [H8553VBBG3](#) [H8553VBBG3076W](#) [H8553VBBA3](#) [H8620VBBB](#) [H8650VBBB076W](#)  
[H8650VBBB](#) [R13112BBR3](#) [R13112LPBR1](#) [NL275C3A-CHROME](#) [C1510AABW](#) [C1550WABWCL050B](#) [C5503PLBR5](#) [C5503PLBR3](#)  
[C7053AFBA3](#) [279672](#) [H8500XBDDR076R](#) [H8550VBBB](#) [H8601VBBB](#) [H8660VBBB](#) [H8800VABB](#) [R13112B2BR6](#) [R13112BBG3](#)  
[R13208FBB](#) [C1550WABB602AW](#) [C6053ALBR31197W](#) [C6053ALBG31197W](#) [3700](#) [LE2870C5G](#) [LHM62R](#) [512F10AE222](#) [64F500FA383](#)  
[C1350XBMBBG](#) [C1353ATMBG3602AW](#) [C1520ALMBB730W](#) [C1300AAAAA](#) [C1353VQGBR3602AW](#) [C1353VQGBG3602AW](#)  
[C1500XAMBBR](#) [T0340RA](#) [L104100FAF](#) [H8503VBNAE](#) [NL67C2R](#) [C3900BA](#) [NL2950BWL2A](#) [C6053ALBG31197WB](#) [NL177WL2R](#)  
[C480AABA7](#)