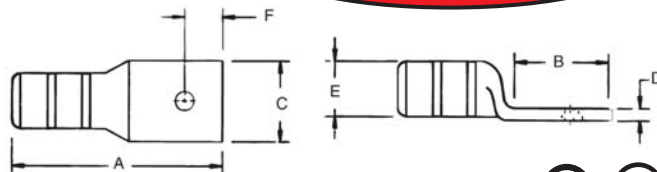


## Connectors for Copper Conductors

**One-Hole Lugs – Long Barrel**  
**Certified to 600V**  
**and Recommended up to 35 kV\***



Peep Holes Available!  
 Add suffix -PH



Material: High-Conductivity Wrought Copper  
 Finish: Electro Tin Plate

C O M P R E S S I O N

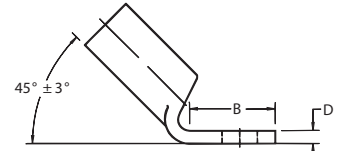
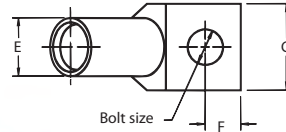
CAT. NO.	WIRE SIZE		Bolt Size	Dimensions in. (mm)						Die Code	Die Color
	Code	Flex Class G, H, I, K, M		A	B	C	D	E	F		
54901BE	#14-10 AWG		1/4	1.23 (31.2)	0.56 (14.2)	0.50 (12.7)	0.05 (1.3)	0.20 (5.1)	0.25 (6.4)	ERG2002	N/A
54929BE	#8 AWG	#8 AWG 37/24	#10	1.65 (41.9)	0.65 (16.5)	0.42 (10.7)	0.08 (2.0)	0.26 (6.6)	0.25 (6.4)	21	Red
54930BE			1/4	1.65 (41.9)	0.65 (16.5)	0.42 (10.7)	0.08 (2.0)	0.26 (6.6)	0.25 (6.4)	21	Red
54904BE	#6 AWG	#6 AWG 61/24	#10	1.65 (41.9)	0.65 (16.5)	0.44 (11.2)	0.08 (2.0)	0.30 (7.6)	0.25 (6.4)	24	Blue
54905BE			1/4	1.65 (41.9)	0.65 (16.5)	0.44 (11.2)	0.08 (2.0)	0.30 (7.6)	0.25 (6.4)	24	Blue
54908BE	#4 AWG	#5 AWG 91/24	#10	1.70 (43.2)	0.65 (16.5)	0.52 (13.2)	0.10 (2.5)	0.37 (9.4)	0.25 (6.4)	29	Grey
54906BE			1/4	1.70 (43.2)	0.65 (16.5)	0.52 (13.2)	0.10 (2.5)	0.37 (9.4)	0.25 (6.4)	29	Grey
54933BE	#2-3 AWG	#3 AWG 125/24	#10	1.88 (47.8)	0.65 (16.5)	0.59 (15.0)	0.11 (2.8)	0.41 (10.4)	0.25 (6.4)	33	Brown
54942BE			5/16	2.03 (51.6)	0.88 (22.4)	0.59 (15.0)	0.11 (2.8)	0.41 (10.4)	0.38 (9.7)	33	Brown
54945BE	#1 AWG	#2 AWG 150/24	#10	1.95 (49.5)	0.65 (16.5)	0.68 (17.3)	0.11 (2.8)	0.47 (11.9)	0.25 (6.4)	37	Green
54947BE			5/16	2.18 (55.4)	0.88 (22.4)	0.68 (17.3)	0.11 (2.8)	0.47 (11.9)	0.38 (9.7)	37	Green
54946BE	1/0 AWG	#1 AWG 225/24	#10	1.95 (49.5)	0.65 (16.5)	0.75 (19.1)	0.13 (3.3)	0.52 (13.2)	0.25 (6.4)	42	Pink
54949BE			5/16	2.18 (55.4)	0.88 (22.4)	0.75 (19.1)	0.13 (3.3)	0.52 (13.2)	0.38 (9.7)	42	Pink
54909BE			3/8	2.23 (56.6)	0.93 (23.6)	0.75 (19.1)	0.13 (3.3)	0.52 (13.2)	0.38 (9.7)	42	Pink
54950BE			1/2	2.55 (64.8)	1.25 (31.8)	0.75 (19.1)	0.13 (3.3)	0.52 (13.2)	0.50 (12.7)	42	Pink
54910BE	2/0 AWG	1/0 AWG 275/24	3/8	2.28 (57.9)	1.25 (31.8)	0.83 (21.1)	0.13 (3.3)	0.57 (14.5)	0.38 (9.7)	45	Black
54951BE			1/2	2.60 (66.4)	1.25 (31.8)	0.83 (21.1)	0.13 (3.3)	0.57 (14.5)	0.50 (12.7)	45	Black
54965BE	3/0 AWG	2/0 AWG 325/24	1/2	2.70 (68.6)	1.25 (31.8)	0.92 (23.4)	0.13 (3.3)	0.63 (16.0)	0.50 (12.7)	50	Orange
256-30695-1252	4/0 AWG	3/0 AWG, 3/0 Weld 450/24	1/4	2.35 (59.7)	0.65 (16.5)	1.03 (33.0)	0.14 (3.6)	0.70 (17.8)	0.75 (19.1)	54	Purple
256-30695-1253			3/8	2.95 (74.9)	1.25 (31.8)	1.03 (33.0)	0.14 (3.6)	0.70 (17.8)	0.38 (9.7)	54	Purple
54970BE			1/2	2.95 (74.9)	1.25 (31.8)	1.03 (33.0)	0.14 (3.6)	0.77 (19.6)	0.50 (12.7)	54	Purple
54913BE	250 kcmil	4/0 AWG, 4/0 Weld 550/24	1/2	3.15 (80.1)	1.25 (31.8)	1.13 (28.7)	0.14 (3.6)	0.85 (21.6)	0.50 (12.7)	62	Yellow
54914BE	300 kcmil	250 kcmil 650/24 = 262 kcmil	1/2	3.50 (88.9)	1.25 (31.8)	1.25 (31.8)	0.15 (3.8)	0.93 (23.6)	0.50 (12.7)	66	White
54915BE	350 kcmil		1/2	3.68 (93.5)	1.58 (40.1)	1.36 (34.5)	0.18 (4.6)	0.96 (24.4)	0.50 (12.7)	71	Red
54916BE	400 kcmil	775/24 = 300/313 kcmil	1/2	3.75 (95.3)	1.25 (31.8)	1.41 (35.8)	0.17 (4.3)	0.96 (24.4)	0.50 (12.7)	76	Blue
54917BE			5/8	4.03 (102.4)	1.58 (40.1)	1.41 (35.8)	0.17 (4.3)	1.10 (27.9)	0.63 (16.0)	76	Blue
54918BE	500 kcmil	400 kcmil 925/24 = 373 kcmil	1/2	4.25 (108.0)	1.25 (31.8)	1.61 (40.9)	0.22 (5.6)	1.10 (27.9)	0.50 (12.7)	87	Brown
54919BE			5/8	4.57 (116.8)	1.58 (40.1)	1.61 (40.9)	0.22 (5.6)	1.20 (30.5)	0.63 (16.0)	87	Brown
54921BE	600 kcmil	1100/24 = 444 kcmil	1/2	4.10 (104.1)	1.25 (31.8)	1.75 (44.5)	0.24 (6.1)	1.20 (30.5)	0.50 (12.7)	94	Green
54920BE			5/8	4.39 (111.6)	1.58 (40.1)	1.75 (44.5)	0.24 (6.1)	1.20 (30.5)	0.63 (16.0)	94	Green
54979BE		1325/24 = 535 kcmil	1/2	4.40 (111.8)	1.25 (31.8)	1.80 (45.7)	0.24 (6.1)	1.25 (31.8)	0.50 (12.7)	99	Pink
54922BE	750 kcmil	1325/24 = 535 kcmil	1/2	4.40 (111.8)	1.25 (31.8)	1.94 (49.3)	0.27 (6.9)	1.33 (33.8)	0.50 (12.7)	106	Black
54923BE		1325/24 = 535 kcmil	5/8	4.72 (119.9)	1.58 (40.1)	1.94 (49.3)	0.27 (6.9)	1.33 (33.8)	0.63 (16.0)	106	Black
54984BE		1600/24 = 646 kcmil	5/8	4.73 (120.1)	1.58 (40.1)	1.94 (49.3)	0.27 (6.9)	1.33 (33.8)	0.63 (16.0)	106	Black
58926BE	900 kcmil	1925/24 = 777 kcmil	5/8	5.23 (132.8)	1.58 (40.1)	2.17 (55.1)	0.31 (7.9)	1.50 (38.1)	0.63 (16.0)	115	Yellow
54928BE	1000 kcmil		5/8	5.24 (134.0)	1.58 (40.1)	2.27 (57.7)	0.30 (7.6)	1.55 (39.4)	0.63 (16.0)	125	N/A
256-30695-918			7/8	5.42 (137.7)	1.82 (46.2)	2.38 (60.5)	0.30 (7.6)	1.55 (39.4)	0.88 (22.4)	125	N/A

Tooling: pp. 116-145 Die Selector Chart: pp.146-153  
 \* For installations from 16 kV up to 35 kV, consult shielded cable manufacturers for stress relief and insulation requirements.

## Connectors for Copper Conductors

### One-Hole Lugs – 45° Long Barrel Certified to 600V and Recommended up to 35 kV\*

Peep Holes Available!  
Add suffix -PH



Material: High-Conductivity  
Wrought Copper  
Finish: Electro Tin Plate

C o m p r e s s i o n

CAT. NO.	WIRE SIZE			Dimensions in. (mm)					Die Code	Die Color
	Code	Flex Class G, H, I, K, M	Bolt Size	B	C	D	E	F		
54929BEUF	#8 AWG		#1/0	0.65 (16.5)	0.42 (10.7)	0.08 (2.0)	0.26 (6.6)	0.25 (6.4)	21	Red
54930BEUF	#8 AWG	37/24	1/4	0.65 (16.5)	0.42 (10.7)	0.08 (2.0)	0.26 (6.6)	0.25 (6.4)	21	Red
54904BEUF	#6 AWG	61/24, #6 AWG	#1/0	0.65 (16.5)	0.44 (11.2)	0.08 (2.0)	0.30 (7.6)	0.25 (6.4)	24	Blue
54905BEUF			1/4	0.65 (16.5)	0.44 (11.2)	0.08 (2.0)	0.30 (7.6)	0.25 (6.4)	24	Blue
54908BEUF			#1/0	0.65 (16.5)	0.52 (13.2)	0.10 (2.5)	0.37 (9.4)	0.25 (6.4)	29	Grey
54806BEUF	#4 AWG	#5 AWG, 91/24	1/4	0.65 (16.5)	0.52 (13.2)	0.10 (2.5)	0.37 (9.4)	0.25 (6.4)	29	Grey
54933BEUF	#2-3 AWG	125/24	#1/0	0.65 (16.5)	0.59 (15.0)	0.11 (2.8)	0.41 (10.4)	0.25 (6.4)	33	Brown
54942BEUF	#3 AWG		5/16	0.88 (22.4)	0.59 (15.0)	0.11 (2.8)	0.41 (10.4)	0.88 (22.4)	33	Brown
54945BEUF			#1/0	0.65 (16.5)	0.68 (17.3)	0.11 (2.8)	0.47 (11.9)	0.25 (6.4)	37	Green
54947BEUF	#1 AWG	#2 AWG, 150/24 – 175/24	5/16	0.88 (22.4)	0.68 (17.3)	0.11 (2.8)	0.47 (11.9)	0.38 (9.7)	37	Green
54946BEUF			#1/0	0.65 (16.5)	0.75 (19.1)	0.13 (3.3)	0.52 (13.2)	0.25 (6.4)	42	Pink
54949BEUF	1/0 AWG	#1 AWG 225/24	5/16	0.88 (22.4)	0.75 (19.1)	0.13 (3.3)	0.52 (13.2)	0.38 (9.7)	42	Pink
54909BEUF			3/8	0.93 (23.6)	0.75 (19.1)	0.13 (3.3)	0.52 (13.2)	0.38 (9.7)	42	
54950BEUF			1/2	1.25 (31.8)	0.75 (19.1)	0.13 (3.3)	0.52 (13.2)	0.50 (12.7)	42	
54910BEUF			3/8	0.93 (23.6)	0.83 (21.1)	0.13 (3.3)	0.57 (14.5)	0.38 (9.7)	45	Black
54951BEUF	2/0 AWG	1/0 AWG, 275/24, 111 kcmil	1/2	1.25 (31.8)	0.83 (21.1)	0.13 (3.3)	0.57 (14.5)	0.50 (12.7)	45	Black
54965BEUF	3/0 AWG	325/24 – 2/0 AWG	1/2	1.25 (31.8)	0.92 (23.4)	0.13 (3.3)	0.63 (16.0)	0.50 (12.7)	50	Orange
54970BEUF04	4/0 AWG	450/24 3/0 Weld	1/4	1.00 (25.4)	1.03 (26.1)	0.14 (3.6)	0.70 (17.8)	0.25 (6.4)	54	Purple
54970BEUF06			3/8	1.13 (23.6)	1.03 (26.1)	0.14 (3.6)	0.70 (17.8)	0.38 (9.7)	54	
54970BEUF			1/2	1.25 (31.8)	1.03 (26.1)	0.14 (3.6)	0.70 (17.8)	0.50 (12.7)	54	
54913BEUF	250 kcmil	550/24 – 4/0 AWG, 4/0 Weld	1/2	1.25 (31.8)	1.13 (28.7)	0.14 (3.6)	0.77 (19.6)	0.50 (12.7)	62	Yellow
54914BEUF	300 kcmil	250 kcmil 650/24 = 262 kcmil	1/2	1.25 (31.8)	1.25 (31.8)	0.15 (3.8)	0.85 (21.6)	0.50 (12.7)	66	White
54915BEUF	350 kcmil	650/24, 262 kcmil	1/2	1.25 (31.8)	1.36 (34.8)	0.18 (4.6)	0.93 (23.6)	0.50 (12.7)	71	Red
54916BEUF	400 kcmil	775/24, 313 kcmil	1/2	1.25 (31.8)	1.41 (35.8)	0.17 (4.3)	0.96 (24.4)	0.50 (12.7)	76	Blue
54917BEUF			5/8	1.58 (40.1)	1.41 (35.8)	0.17 (4.3)	0.96 (24.4)	0.63 (16.0)	76	
54918BEUF	500 kcmil	925/24, 373 kcmil, 400 kcmil	1/2	1.25 (31.8)	1.61 (40.9)	0.22 (5.6)	1.10 (27.9)	0.50 (12.7)	87	Brown
54919BEUF			5/8	1.58 (40.1)	1.61 (40.9)	0.22 (5.6)	1.10 (27.9)	0.63 (16.0)	87	Brown
54921BEUF	600 kcmil	1100/24, 444 kcmil	1/2	1.25 (31.8)	1.75 (44.5)	0.24 (6.1)	1.20 (30.5)	0.50 (12.7)	94	Green
54920BEUF			5/8	1.58 (40.1)	1.75 (44.5)	0.24 (6.1)	1.20 (30.5)	0.63 (16.0)	94	
54922BEUF	750 kcmil	1325/24, 500/535 kcmil	1/2	1.25 (31.8)	1.94 (49.3)	0.27 (6.9)	1.33 (33.8)	0.50 (12.7)	106	Black
54923BEUF			5/8	1.58 (40.1)	1.94 (49.3)	0.27 (6.9)	1.33 (33.8)	0.63 (16.0)	106	
58984BEUF		1600/24, 646 kcmil	5/8	1.58 (40.1)	1.94 (49.3)	0.27 (6.9)	1.33 (33.8)	0.63 (16.0)	106	Black
58926BEUF	900 kcmil	1925/24, 777 kcmil	5/8	1.58 (40.1)	2.17 (55.1)	0.31 (7.9)	1.50 (38.1)	0.63 (16.0)	115	Yellow
54928BEUF	1000 kcmil		5/8	1.58 (40.1)	2.27 (57.7)	0.30 (7.6)	1.55 (39.4)	0.63 (16.0)	125	N/A
54928BEUF12			7/8	1.83 (46.5)	2.37 (60.2)	0.30 (7.6)	1.55 (39.4)	0.88 (22.4)	125	

Tooling: pp. 116–145

Die Selector Chart: pp.146–153

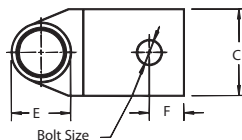
\* For installations from 16 kV up to 35 kV, consult shielded cable manufacturers for stress relief and insulation requirements.

## Connectors for Copper Conductors

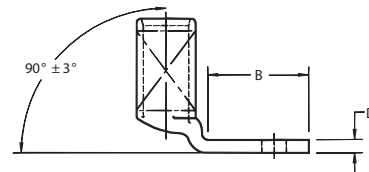
**One-Hole Lugs –  
90° Long Barrel  
Certified to 600V  
and Recommended  
up to 35 kV\***

Material: High-Conductivity  
Wrought Copper

Finish: Electro Tin Plate



**Peep Holes Available!**  
Add suffix **-PH**



C O M P R E S S I O N

CAT. NO.	WIRE SIZE		Bolt Size	Dimensions in. (mm)					Die Code	Die Color
	Code	Flex Class G, H, I, K, M		B	C	D	E	F		
54929BEUB	#8 AWG	37/24	#10	0.65 (16.5)	0.42 (10.7)	0.08 (2.0)	0.26 (6.6)	0.25 (6.4)	21	Red
54930BEUB			1/4	0.65 (16.5)	0.42 (10.7)	0.08 (2.0)	0.26 (6.6)	0.25 (6.4)	21	Red
54904BEUB	#6 AWG	#6 AWG, 61/24	#10	0.65 (16.5)	0.44 (11.2)	0.08 (2.0)	0.30 (7.6)	0.25 (6.4)	24	Blue
54905BEUB			1/4	0.65 (16.5)	0.44 (11.2)	0.08 (2.0)	0.30 (7.6)	0.25 (6.4)	24	Blue
54908BEUB	#4 AWG	#5 AWG, 91/24	#10	0.65 (16.5)	0.52 (13.2)	0.10 (2.5)	0.37 (9.4)	0.25 (6.4)	29	Grey
54806BEUB			1/4	0.65 (16.5)	0.52 (13.2)	0.10 (2.5)	0.37 (9.4)	0.25 (6.4)	29	Grey
54933BEUB	#2-3 AWG	125/24	#10	0.65 (16.5)	0.59 (15.0)	0.11 (2.8)	0.41 (10.4)	0.25 (6.4)	33	Brown
54942BEUB			5/16	0.88 (22.4)	0.59 (15.0)	0.11 (2.8)	0.41 (10.4)	0.38 (9.7)	33	Brown
54945BEUB	#1 AWG	#2 AWG, 150/24 – 175/24	#10	0.65 (16.5)	0.68 (17.3)	0.11 (2.8)	0.47 (11.9)	0.25 (6.4)	37	Green
54947BEUB			5/16	0.88 (22.4)	0.68 (17.3)	0.11 (2.8)	0.47 (11.9)	0.38 (9.7)	37	Green
54946BEUB	1/0 AWG	#1 AWG 225/24	#10	0.65 (16.5)	0.75 (19.1)	0.13 (3.3)	0.52 (13.2)	0.25 (6.4)	42	Pink
54949BEUB			5/16	0.88 (22.4)	0.75 (19.1)	0.13 (3.3)	0.52 (13.2)	0.38 (9.7)	42	
54909BEUB			3/8	0.93 (23.6)	0.75 (19.1)	0.13 (3.3)	0.52 (13.2)	0.38 (9.7)	42	
54950BEUB			1/2	1.25 (31.8)	0.75 (19.1)	0.13 (3.3)	0.52 (13.2)	0.50 (12.7)	42	
54910BEUB	2/0 AWG	1/0 AWG, 275/24	3/8	0.93 (23.6)	0.83 (21.1)	0.13 (3.3)	0.57 (14.5)	0.38 (9.7)	45	Black
54951BEUB			1/2	1.25 (31.8)	0.83 (21.1)	0.13 (3.3)	0.57 (14.5)	0.50 (12.7)	45	
54965BEUB	3/0 AWG	2/0 AWG – 325/24	1/2	1.25 (31.8)	0.92 (23.4)	0.13 (3.3)	0.63 (16.0)	0.50 (12.7)	50	Orange
54970BEUB04	4/0 AWG	3/0 AWG, 450/24 3/0 Weld	1/4	1.00 (25.4)	1.03 (26.2)	0.14 (3.6)	0.70 (17.8)	0.25 (6.4)	54	Purple
54970BEUB06			3/8	1.13 (28.7)	1.03 (26.2)	0.14 (3.6)	0.70 (17.8)	0.38 (9.7)	54	
54970BEUB			1/2	1.25 (31.8)	1.03 (26.2)	0.14 (3.6)	0.70 (17.8)	0.50 (12.7)	54	
54913BEUB	250 kcmil	550/24 – 4/0 AWG, 4/0 Weld	1/2	1.25 (31.8)	1.13 (28.7)	0.14 (3.6)	0.77 (19.6)	0.50 (12.7)	62	Yellow
54914BEUB	300 kcmil	250 kcmil, 650/24 = 262 kcmil	1/2	1.25 (31.8)	1.25 (31.8)	0.15 (3.8)	0.85 (21.6)	0.50 (12.7)	66	White
54915BEUB	350 kcmil	650/24, 262 kcmil	1/2	1.25 (31.8)	1.36 (34.5)	0.18 (4.6)	0.93 (23.6)	0.50 (12.7)	71	Red
54916BEUB	400 kcmil	775/24, 300/313 kcmil	1/2	1.58 (40.1)	1.41 (35.8)	0.17 (4.3)	0.96 (24.4)	0.50 (12.7)	76	Blue
54917BEUB			5/8	1.25 (31.8)	1.41 (35.8)	0.17 (4.3)	0.96 (24.4)	0.63 (16.0)	76	
54918BEUB	500 kcmil	925/24, 350/373 kcmil 400 kcmil	1/2	1.58 (40.1)	1.61 (40.9)	0.22 (5.6)	1.10 (27.9)	0.50 (12.7)	87	Brown
54919BEUB			5/8	1.25 (31.8)	1.61 (40.9)	0.22 (5.6)	1.10 (27.9)	0.63 (16.0)	87	
54921BEUB	600 kcmil	1100/24, 444 kcmil	1/2	1.58 (40.1)	1.75 (44.5)	0.24 (6.1)	1.20 (30.5)	0.50 (12.7)	94	Green
54920BEUB			5/8	1.25 (31.8)	1.75 (44.5)	0.24 (6.1)	1.20 (30.5)	0.63 (16.0)	94	
54922BEUB	750 kcmil	1325/24, 500/535 kcmil	1/2	1.25 (31.8)	1.94 (49.3)	0.27 (6.9)	1.33 (33.8)	0.50 (12.7)	106	Black
54923BEUB			5/8	1.58 (40.1)	1.94 (49.3)	0.27 (6.9)	1.33 (33.8)	0.63 (16.0)	106	
58984BEUB			5/8	1.58 (40.1)	1.94 (49.3)	0.27 (6.9)	1.33 (33.8)	0.63 (16.0)	106	
58926BEUB	900 kcmil	1925/24, 777 kcmil	5/8	1.58 (40.1)	2.17 (55.1)	0.31 (7.9)	1.50 (38.1)	0.63 (16.0)	115	Yellow
54928BEUB	1000 kcmil		5/8	1.58 (40.1)	2.27 (57.7)	0.30 (7.6)	1.55 (39.4)	0.63 (16.0)	125	N/A
54928BEUB12			7/8	1.58 (46.5)	2.37 (60.2)	0.30 (7.6)	1.55 (39.4)	0.88 (22.4)	125	

Tooling: pp. 116–145

Die Selector Chart: pp.146–153

\* For installations from 16 kV up to 35 kV, consult shielded cable manufacturers for stress relief and insulation requirements.

## X-ON Electronics

Largest Supplier of Electrical and Electronic Components

*Click to view similar products for [abb](#) manufacturer:*

Other Similar products are found below :

[TV10-516R](#) [017667013](#) [RF727](#) [2CMA100178R1000](#) [5SDD 92Z0401](#) [ESV14-BS](#) [EZS-21-250](#) [F204AC-40/0.03](#) [F362-25/0.03](#)

[GJL1211001R0011](#) [GJL1211201R8000](#) [GJL1211501R8000](#) [GJL1213001R0017](#) [GJL1213001R0101](#) [GJL1311001R0101](#) [GJL1311001R8010](#)

[GJL1311201R0001](#) [GJL1313001R0011](#) [GJL1313001R0101](#) [GJL1317201R0001](#) [AF09-30-01-11](#) [AF460-30-11-68](#) [1455](#) [EF45-30](#) [ERG297](#)

[HSC2-20](#) [1SAM201904R1001](#) [1SAM350000R1003](#) [1SAZ721201R1009](#) [1SAZ721201R1014](#) [1SAZ721201R1025](#) [1SFA611101R1002](#)

[1SFA611130R1103](#) [1SFA611131R1101](#) [1SFA611143R1101](#) [1SFA611202R1108](#) [1SFA611203R1108](#) [1SFA611215R1001](#)

[1SFA611216R1108](#) [1SFA611285R1002](#) [1SFA611702R6006](#) [1SFA616162R1025](#) [1SFA619100R3015](#) [1SVR730020R0200](#) [IPC4111](#)

[OS30FACC12](#) [OS60GJ03](#) [OVR1N160277PS](#) [OXC1L48](#) [254](#)