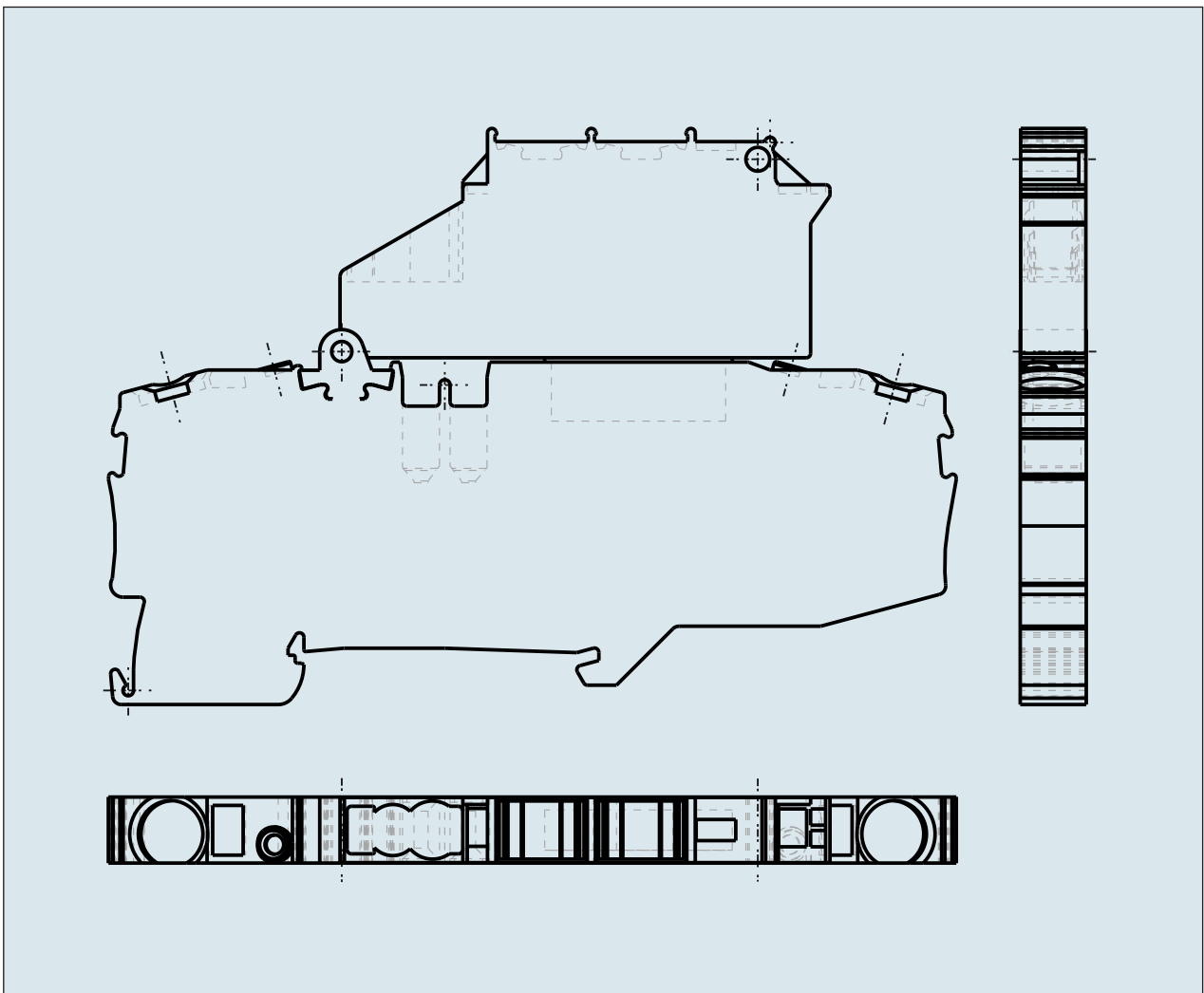
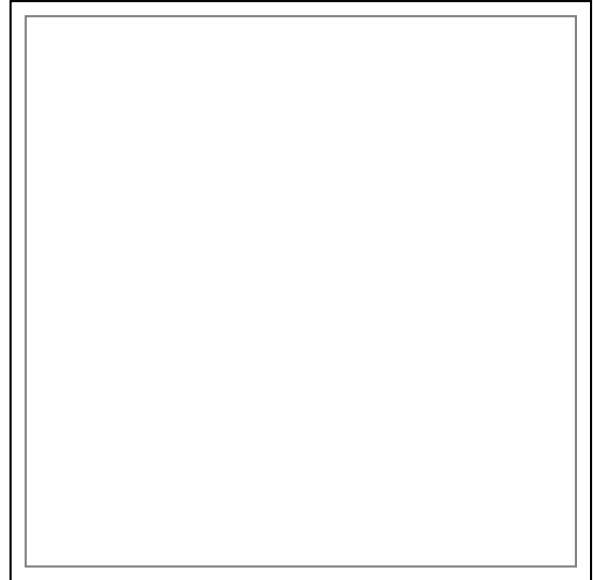
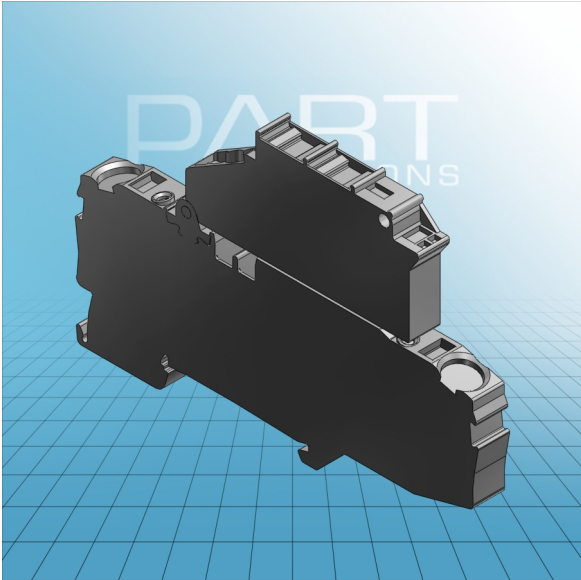


**FUSED DISCONNECT TERMINAL
BLOCK WITH PIVOTABLE FUSE
HOLDER for miniature fuses 1/4" x 1/4"
WITH BLOWN FUSE INDICATION BY**



**FUSED DISCONNECT TERMINAL
BLOCK WITH PIVOTABLE FUSE
HOLDER for miniature fuses 1/4" x 1/4"
WITH BLOWN FUSE INDICATION BY
LED**
2006-1631/1000-541

ITEM-NO. (ITEM-NO.)	2006-1631/1000-541
Cross section1 (Cross section / mm²)	0.5 - 6 (10)
Cross section2 (Cross section / AWG)	20 - 8
Strip length (Strip length / mm)	13 - 15
Measured voltage (Measured voltage / V)	800
Measured shock voltage (Measured shock voltage / kV)	8
Pollution degree (Pollution degree)	3
Current intensity (Current intensity / A)	10
Height (Height / mm)	59
Width (Width / mm)	7.5
Depth (Depth / mm)	93.3
No. of connection Points (No. of connection Points)	2
No. of potentials (No. of potentials)	1
COLOR (COLOR)	grau
Comment (Comment)	12 - 30 V

X-ON Electronics

Largest Supplier of Electrical and Electronic Components

Click to view similar products for [wago](#) manufacturer:

Other Similar products are found below :

[750-460](#) [231-118/026-000](#) [231-303/026-000](#) [231-620/019-000](#) [257-403](#) [280-438](#) [280-831](#) [284-624](#) [210-111](#) [231-303/037-000](#) [231-446/001-000_NR](#) [232-216/026-000](#) [234-510](#) [264-726](#) [280-339](#) [0283-0671](#) [830-800/000-305](#) [750-512](#) [750-455](#) [51251782](#) [286-312](#) [713-1428/107-000](#) [731-138/048-000](#) [750-459](#) [750-517](#) [750-602](#) [793-3505](#) [826-172](#) [859-304](#) [280-335](#) [231-535/001-000](#) [2604-1105](#) [2604-1106](#) [2604-1504](#) [2606-1103/020-000](#) [2624-1103](#) [2626-3103/020-000](#) [821-104](#) [713-1107](#) [852-1411](#) [2106-1307](#) [2116-5307](#) [832-1205](#) [832-3604](#) [2009-110](#) [281-512/281-501](#) [286-336](#) [750-421](#) [750-838](#) [753-559](#)