

## Datasheet - AZM 170-02ZRK 24 VAC/DC

Solenoid interlock / AZM 170



- thermoplastic enclosure
- Double-insulated
- Compact design
- 90 mm x 84 mm x 30 mm
- 1 Cable entry M 20 x 1.5
- Interlock with protection against incorrect locking.
- Long life
- High holding force
- IDC method of termination
- Manual release

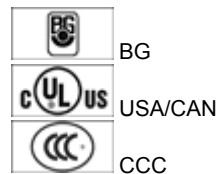
(Minor differences between the printed image and the original product may exist!)

### Ordering details

Product type description	AZM 170-02ZRK 24 VAC/DC
Article number	1140795
EAN code	4030661119830

### Approval

Approval




### Classification

Standards	EN ISO 13849-1
B <sub>10d</sub> Opener (NC)	2.000.000
Mission time	20 Years
notice	$MTTF_d = \frac{B_{10d}}{0,1 \times n_{op}}$ $n_{op} = \frac{d_{op} \times h_{op} \times 3600 \text{ s/h}}{t_{zyklus}}$

### Global Properties

Product name	AZM 170
--------------	---------

Standards	EN 60947-5-1, BG-GS-ET-19
Compliance with the Directives (Y/N) 	Yes
Number of actuating directions	2 piece
Active principle	electromechanical
Duty cycle	Magnet 100 %
Materials	
- Material of the housings	Plastic, glass-fibre reinforced thermoplastic, self-extinguishing
- Material of the contacts	Silver
Housing coating	None
Weight	288 g

## Mechanical data

---

Design of electrical connection	IDC method of termination
Cable section	
- Min. Cable section	1 x 0,75 mm <sup>2</sup>
- Max. Cable section	1 x 1.0 mm <sup>2</sup> , flexible
Mechanical life	> 1.000.000 operations
Emergency unlocking device (Y/N)	No
Manual release (Y/N)	Yes
- bottom	
Emergency release (Y/N)	No
Latching force	30 N
Positive break force	17 N
positive break travel	11 mm
Clamping force F <sub>max</sub>	1000 N
Max. Actuating speed	2 m/s

## Ambient conditions

---

Ambient temperature	
- Min. environmental temperature	- 25°C
- Max. environmental temperature	+ 60°C
Protection class	IP67 to IEC/EN 60529

## Electrical data

---

Design of control element	Opener (NC)
Switching principle	Creep circuit element
Number of auxiliary contacts	0 piece
Number of safety contacts	2 piece
Power to unlock	Yes
Power to lock	No
Rated control voltage U <sub>s</sub>	24 VAC/DC
Power consumption	max. 10 W
Rated impulse withstand voltage U <sub>imp</sub>	4 kV
Rated insulation voltage U <sub>i</sub>	250 V
Thermal test current I <sub>the</sub>	10 A
Utilisation category	AC-15: 230 V / 4 A, DC-13: 24 V / 4 A
Max. fuse rating	6 A gG D-fuse

## ATEX

---

Explosion protection categories for gases	None
---	------

Explosion protected category for dusts

None

### Miscellaneous data

Applications



sliding safety guard,



removable guard,



hinged safety guard

### Dimensions

Dimensions of the sensor

- Width of sensor 90 mm
- Height of sensor 84 mm
- Length of sensor 30 mm

### notice

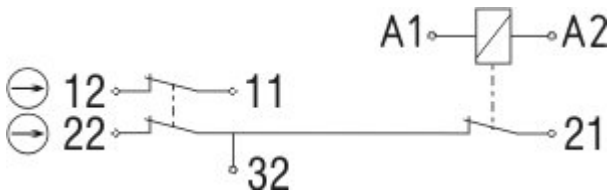
This type termination (IDC) method enables simple connection of flexible conductors without the need for the use of conductor ferrules

Individual coding available on request

Manual release

- For manual release using M5 triangular key, available as accessory

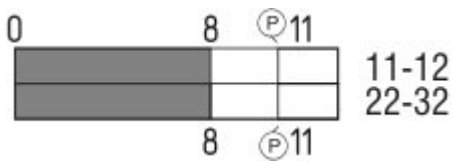
### Diagram



Note Diagram

- positive break NC contact
- active
- no active
- Normally-open contact
- Normally-closed contact

### Switch travel diagram



Notes Switch travel diagram

- Contact closed
- Contact open
- Setting range
- Break point
- Positive opening sequence/- angle
- VS** adjustable range of NO contact

VÖ adjustable range of NC contact  
N after travel

## Ordering suffix

---

The applicable ordering suffix is added at the end of the part number of the safety switch.  
Order example: AZM 170-02ZRK 24 VAC/DC-**1637**

---

...- <b>1637</b>	0,3 µm gold-plated contacts
... <b>ST-2431</b>	connector M12 , Individual solenoid monitoring

---

## Ordering code

---

AZM 170(1)-(2)Z(3)K(4)-(5)-(6)-(7)

(1)

*without* IDC method of termination  
**SK** Screw connection

(2)

**11** 1 Normally open contact (NO) / 1 Opener (NC)  
**02** 2 Opener (NC)  
**12/0.0** 1 Normally open contact (NO), 2 Opener (NC) / -

(3)

*without* Latching force 5 N  
**R** Latching force 30 N  
**I** Individual coding

(4)

*without* Power to unlock  
**A** Power to lock

(5)

*without* cable gland  
**ST** Connector M12 x 1  
**ST-2431** Connector M12 x 1, Individual solenoid monitoring

(6)

**24VAC/DC** U<sub>s</sub> 24 VAC/DC  
**110VAC** U<sub>s</sub> 110 VAC  
**230VAC** U<sub>s</sub> 230 VAC

(7)

*without* Manual release  
**2197** Manual release from side (Power to unlock)  
**1637** gold-plated contacts

**AZM 170ST and AZM 170SK**

**AZM 170ST-(1)Z(2)K(3)-(4)-(5)-024**

**AZM 170SK-(1)Z(2)K(3)-(4)-(5)-024**

(1)

**11/11** 1 Normally open contact (NO), 1 Opener (NC) / 1 Normally open contact (NO), 1 Opener (NC)  
**11/02** 1 Normally open contact (NO), 1 Opener (NC) / 2 Opener (NC)  
**12/00** 1 Normally open contact (NO), 2 Opener (NC) / -  
**12/11** 1 Normally open contact (NO), 2 Opener (NC) / 1 Normally open contact (NO), 1 Opener (NC)  
**12/02** 1 Normally open contact (NO), 2 Opener (NC) / 2 Opener (NC)

<b>02/01</b>	2 Opener (NC), - / 1 Opener (NC), -
<b>02/10</b>	2 Opener (NC), - / 1 Normally open contact (NO), -
<b>(2)</b>	
<i>without</i>	Latching force 5 N
<b>R</b>	Latching force 30 N
<b>(3)</b>	
<i>without</i>	Power to unlock
<b>A</b>	Power to lock
<b>(4)</b>	
<b>1637</b>	gold-plated contacts
<b>(5)</b>	
<b>2197</b>	Manual release for Power to unlock

## Documents

---

**Operating instructions and Declaration of conformity** (jp) 709 kB, 14.04.2011  
[http://127.0.0.1/Bilddata/Azm/Pdf/Azm170/bedien/azm170/jp/mrl\\_azm170\\_jp.pdf](http://127.0.0.1/Bilddata/Azm/Pdf/Azm170/bedien/azm170/jp/mrl_azm170_jp.pdf)

**Operating instructions and Declaration of conformity** (es) 665 kB, 25.03.2010  
[http://127.0.0.1/Bilddata/Azm/Pdf/Azm170/bedien/azm170/es/mrl\\_azm170\\_es.pdf](http://127.0.0.1/Bilddata/Azm/Pdf/Azm170/bedien/azm170/es/mrl_azm170_es.pdf)

**Operating instructions and Declaration of conformity** (en) 746 kB, 12.03.2010  
[http://127.0.0.1/Bilddata/Azm/Pdf/Azm170/bedien/azm170/en/mrl\\_azm170\\_en.pdf](http://127.0.0.1/Bilddata/Azm/Pdf/Azm170/bedien/azm170/en/mrl_azm170_en.pdf)

**Operating instructions and Declaration of conformity** (fr) 670 kB, 01.07.2010  
[http://127.0.0.1/Bilddata/Azm/Pdf/Azm170/bedien/azm170/fr/mrl\\_azm170\\_fr.pdf](http://127.0.0.1/Bilddata/Azm/Pdf/Azm170/bedien/azm170/fr/mrl_azm170_fr.pdf)

**Operating instructions and Declaration of conformity** (nl) 720 kB, 23.09.2010  
[http://127.0.0.1/Bilddata/Azm/Pdf/Azm170/bedien/azm170/nl/mrl\\_azm170\\_nl.pdf](http://127.0.0.1/Bilddata/Azm/Pdf/Azm170/bedien/azm170/nl/mrl_azm170_nl.pdf)

**Operating instructions and Declaration of conformity** (de) 573 kB, 18.02.2011  
[http://127.0.0.1/Bilddata/Azm/Pdf/Azm170/bedien/azm170/de/mrl\\_azm170\\_de.pdf](http://127.0.0.1/Bilddata/Azm/Pdf/Azm170/bedien/azm170/de/mrl_azm170_de.pdf)

**Operating instructions and Declaration of conformity** (it) 645 kB, 09.04.2010  
[http://127.0.0.1/Bilddata/Azm/Pdf/Azm170/bedien/azm170/it/mrl\\_azm170\\_it.pdf](http://127.0.0.1/Bilddata/Azm/Pdf/Azm170/bedien/azm170/it/mrl_azm170_it.pdf)

**BG-test certificate** (en) 574 kB, 05.01.2011  
[http://127.0.0.1/Bilddata/Azm/Pdf/Azm170/baumuste/z\\_m17p02.pdf](http://127.0.0.1/Bilddata/Azm/Pdf/Azm170/baumuste/z_m17p02.pdf)

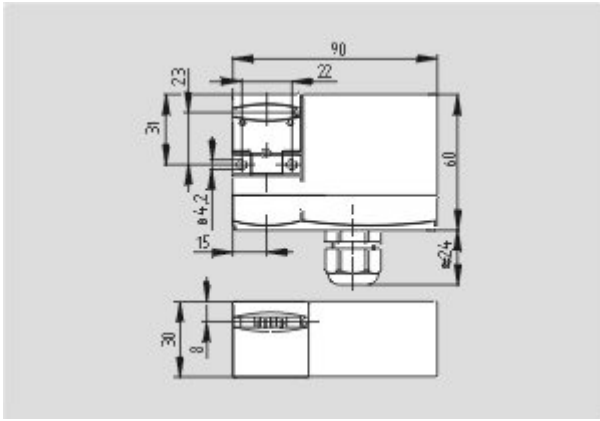
**BG-test certificate** (de) 589 kB, 05.01.2011  
[http://127.0.0.1/Bilddata/Azm/Pdf/Azm170/baumuste/z\\_m17p01.pdf](http://127.0.0.1/Bilddata/Azm/Pdf/Azm170/baumuste/z_m17p01.pdf)

**CCC certification** (en) 747 kB, 12.12.2006  
[http://127.0.0.1/Bilddata/Azm/Pdf/Azm161/zertifikat/q\\_371p02.pdf](http://127.0.0.1/Bilddata/Azm/Pdf/Azm161/zertifikat/q_371p02.pdf)

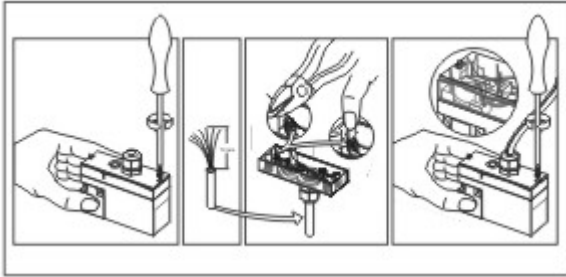
**CCC certification** (cn) 725 kB, 12.12.2006  
[http://127.0.0.1/Bilddata/Azm/Pdf/Azm161/zertifikat/q\\_371p03.pdf](http://127.0.0.1/Bilddata/Azm/Pdf/Azm161/zertifikat/q_371p03.pdf)

## Images

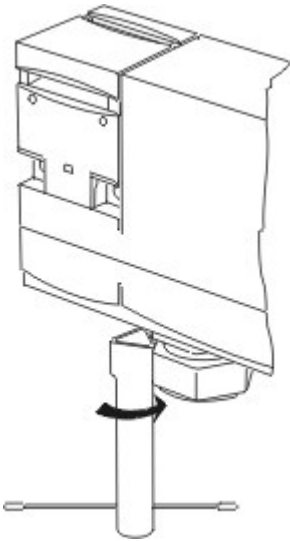
---



Dimensional drawing (basic component)



Assembly example



Detail photo

## System components

### Actuator



**1122893 - AZ 17/170-B1**

- Particularly suitable for sliding doors

**1137406 - AZ 17/170-B1-2245**

- Damps vibration on guard device



---

**1122895 - AZ 17/170-B5**

- Particularly suitable for hinged guards (front mounting)



---

**1139788 - AZ 17/170-B11**

- Particularly suitable for sliding doors



---

**1139789 - AZ 17/170-B15**

- Particularly suitable for hinged guards (front mounting)



---

**1123391 - AZM 170-B6**

- For very small actuating radii
- The direction of actuation can be selected by applicable insertion of the insert

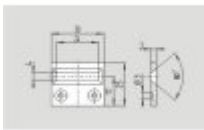


---

**Accessories**

**1208493 - AZM 170-B CENTERING GUIDE**

- for AZ 17 and AZM 170



---

**1100887 - TRIANGULAR KEY M5**

- For manual release using M5 triangular key, available as accessory
- For maintenance, installation, etc.



## X-ON Electronics

Largest Supplier of Electrical and Electronic Components

*Click to view similar products for [Limit Switches](#) category:*

*Click to view products by [Schmersal](#) manufacturer:*

Other Similar products are found below :

[6LS2-4PG](#) [5ML1-E1](#) [5ML31](#) [LZG1](#) [LZL1-6C](#) [622EN114-R](#) [622EN18-6](#) [622EN224-6B](#) [622EN230](#) [622EN237-R](#) [622EN69-3](#) [622EN85-RB](#)  
[MA-10019](#) [6PA109](#) [7LS51](#) [83547001](#) [83725002](#) [83830001](#) [83840001](#) [83840701](#) [83841001](#) [83870104](#) [83881140](#) [8AS42](#) [8LS10](#) [8LS125-](#)  
[4PG](#) [8LS152-4PGN20](#) [914CE16-3A](#) [914CE3-3L1](#) [915PA10](#) [91MCE16-P2O](#) [924CE16-Y3](#) [924CE1-S6](#) [924CE1-T25A](#) [924CE1-T3](#) [924CE1-](#)  
[T9A](#) [924CE2-T9](#) [924CE31-Y20-X5](#) [924CE31-Y3L1](#) [GL-10054](#) [GL-85710](#) [GL-85714](#) [GLAB26J2B](#) [GLDB03C-6](#) [GLZ324](#) [PS21R-](#)  
[NT11N7-YK0](#) [D4A-1106N](#) [D4A-3E02N](#) [D4A-4510N](#) [D4A-4516N](#)