

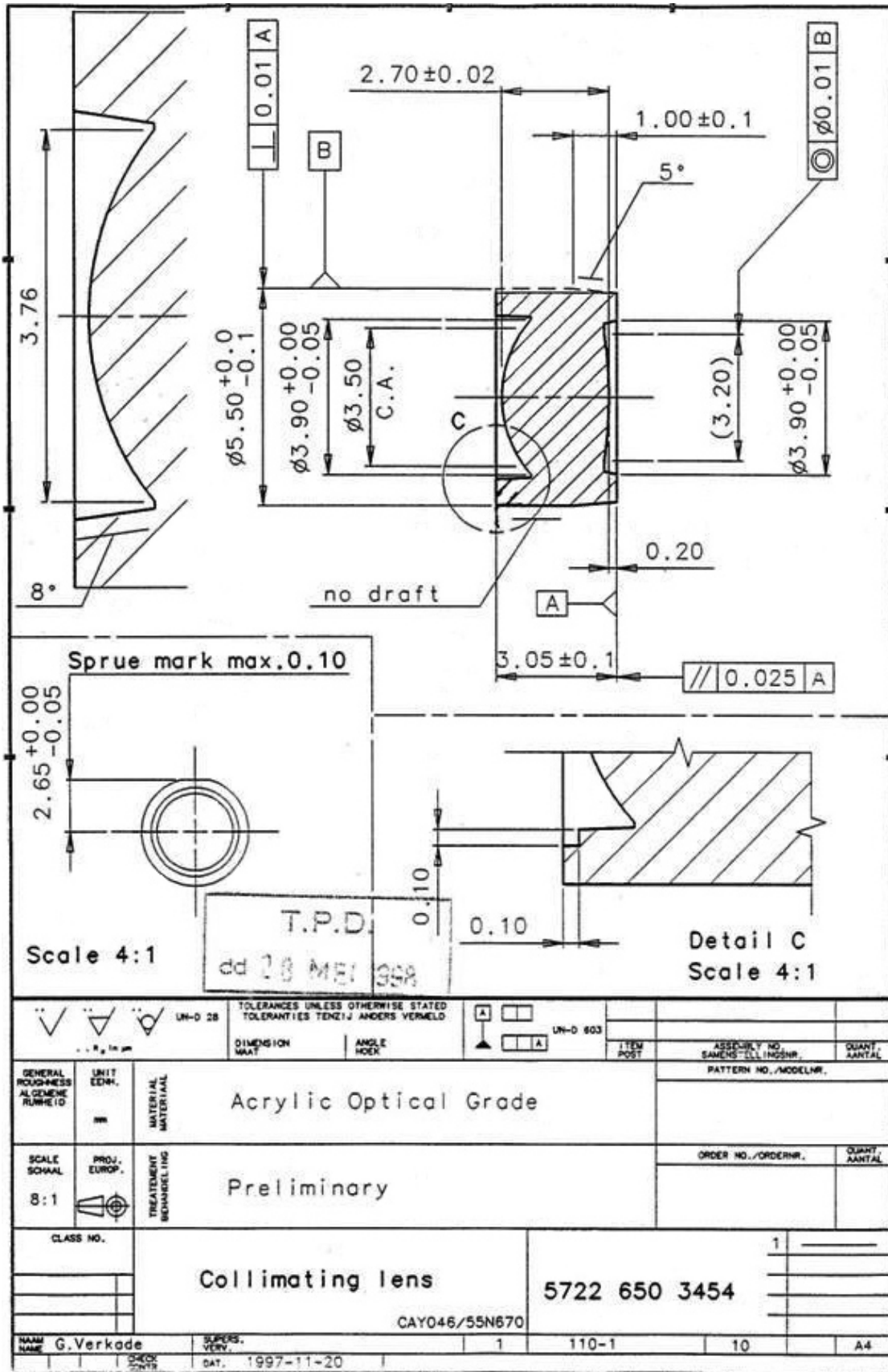
Datasheet Plastic Collimator Lens CAY046-034N670¹

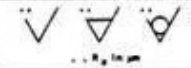
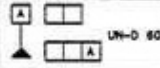
These data concern a full plastic a-spherical lens. It is for use as a collimator in combination with a diode laser. It can be mounted by use of glue or spring-loaded. Mechanical lock-mounting is not advisable because of possible distortions.

Parameters					Unit
Design conditions (670 nm)					
N.A.	0.37				--
Clear Aperture (<i>Exit Pupil</i>)	3.4				mm
Clear Aperture (<i>Entrance Pupil</i>)	2.6				mm
Optical parameters					
	Wavelength				nm
	546	632	670	780	
Effective Focal Length ¹⁾	4.55	9.87	4.60	4.62	mm
Back Focal Length ¹⁾	3.04	8.46	3.09	3.12	mm
Free Working Distance ¹⁾	2.84	2.85	2.89	2.92	mm
RMS mean ¹⁾	36	31	30	25	mλ
	on axis				
RMS max. ($\pm 3\sigma$) ¹⁾	49	42	40	34	mλ
	on axis				
Field Radius	0.10				mm
1) Remark: without 4 mm SF11 glass or 1.25 mm BK7 glass					
1) Optical Tolerance	+/- 0.10				mm
Mechanical parameters					
Mounting hole diameter D_{mh}	\varnothing 5.50 (+ 0.03)				mm
Lens Thickness	2.70				mm
Optical Eccentricity	< 30				μm
Environmental stability					
Storage Temperature	-25 to 70				°C
Operating Temperature	5 to 65				°C
General Data:					
Transmission [%]:	> 90	(non coated)			
Lens Material:	PMMA				

¹ **Specifications subject to change without notice.**

© Helvoet Rubber & Plastic Technologies NV. All rights reserved. Reproduction prohibited without written permission from the copyright owner



		UN-D 28	TOLERANCES UNLESS OTHERWISE STATED TOLERANTIES TENZIJ ANDERS VERMELD			UN-D 603	ITEM POST	ASSEMBLY NO. SAMENS-TLLINGENHR.	QUANTITY AANTAL	
GENERAL ROUGHNESS ALGEMENE RUWHEID	UNIT EENH.	MATERIAL	Acrylic Optical Grade				PATTERN NO./MODELNR.			
SCALE SCHAAL	PROV. EUROP.	TREATMENT BEHANDELING	Preliminary				ORDER NO./ORDERNR.			
CLASS NO.		Collimating lens				5722 650 3454				
NAME NAAM		G.Verkaide		SUPER-VIEW		1		110-1		
CHECK CONTROLE		DATE DAT.		1997-11-20		1		10		
								A4		

X-ON Electronics

Largest Supplier of Electrical and Electronic Components

Click to view similar products for [laser components manufacturer](#):

Other Similar products are found below :

[FP-HD-L-635-7-30-F](#) [IG22X1000S4I](#) [FP-D-520-1-C-F](#) [FP-D-650-1D-C-F](#) [FP-LR-635-1-C-F](#) [FP-MV18-ST-660-20-30-F-STD](#) [FP-D-405-16-E-F](#) [FP-D-635-17-C-F](#) [FP-D-635-3-E-F](#) [FP-D-635-7-E-F](#) [FP-D-650-25-E-F](#) [FP-D-650-3-E-F](#) [FP-D-660-40-C-F](#) [FP-D-670-1-C-F](#) [FP-D-670-5-C-F](#) [FP-D-785-50-C-F](#) [FP-D-850-1-C-F](#) [FP-D-850-5-E-F](#) [FP-L-635-5-50-C](#) [FP-L-850-3-50-C](#) [FP-L-905-5-50-C](#) [FP-MG-19](#) [FP-MS-11.5](#) [FP-D-650-1-C-F](#) [IG17X1300S4I](#) [LC-LMD-635-03-03-A](#) [LC-LMD-650-05-01-A](#) [FP-MINI-635-1-F](#) [FP-MINI-650-1-F](#) [IG22X250S4I](#) [ILM12F-DOE-520-7-259-F](#) [FP-D-635-13-E-F](#) [FP-D-635-40-C-F](#) [FP-D-905-7-E-F](#) [FP-L-405-15-50-C](#) [FP-L-635-1-50-C](#) [FP-L-650-1-50-C](#) [LC-LMP-635-287-03-A](#) [FP-D-520-5-C-F](#) [IG17X250S4I](#) [ILM12F-DOE-635-7-247-F](#) [FP-D-635-1-C-F](#) [FP-D-635-1-C-F-24V](#) [ILM12F-D-520-1-C-F](#) [FP-D-650-20-C-F-24](#) [ADL-65104TA4](#) [ILM12F-L-520-7-58-F](#) [ADL-65104TL](#) [LC-LMD-635-02-03-A](#) [FP-HD-DOE-520-7-289-F](#)