

Motoriduttori Gear-motors

Series B 138 F

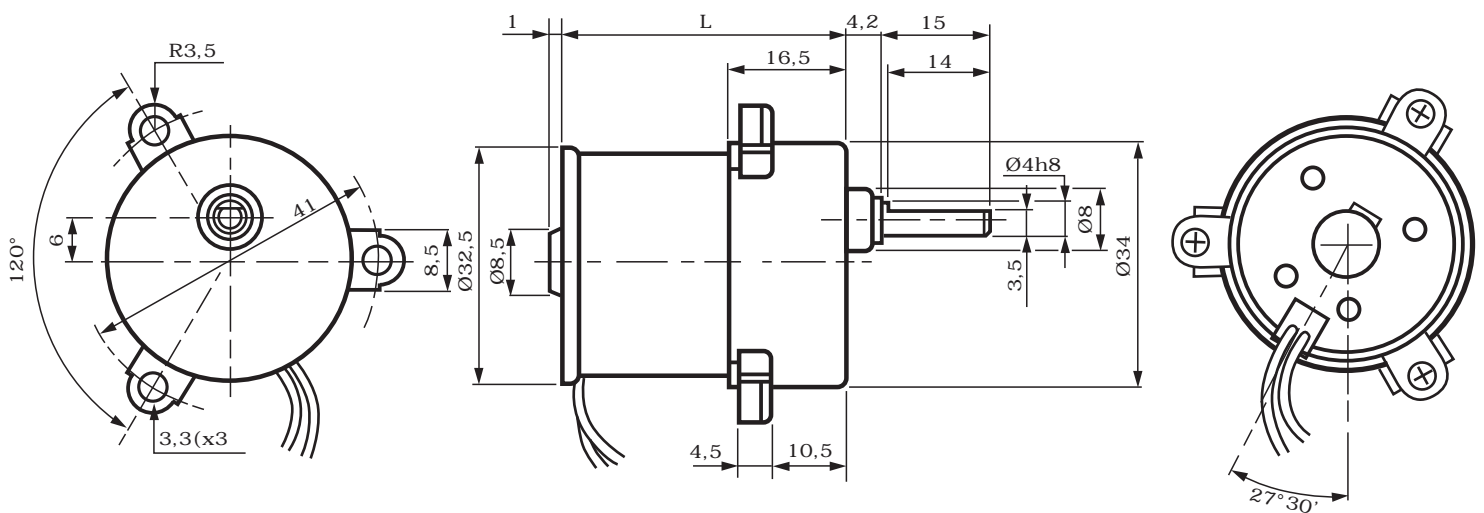
Soppressione disturbi con VDR sul collettore
 Direzione di rotazione secondo polarità
 Può essere montato in ogni posizione
 Massimo carico radiale: 20N
 Massimo carico assiale: 5N
 Temperatura di esercizio: -20°C/60°C
 Peso approssimativo: 85g

VDR interference suppression on the collector
Direction of rotation depending on polarity
Can be mounted in any position
Maximum radial shaft load: 20N
Maximum axial shaft load: 5N
Temperature range: -20°C/60°C
Approx weight: 85g

Valori tipici a temperatura ambiente +20°
Tolleranza +/- 10%

Typical values at ambient temperature +20°
Tolerance +/- 10%

TIPO TYPE	TENSIONE NOMINALE	L	RAPPORTO :1 RATIO TO :1	COPPIA MASSIMA MAXIMUM TORQUE	VELOCITA' SPEED		CORRENTE CURRENT	
	NOMINAL VOLTAGE				SENZA CARICO NO LOAD	CON MAX COPPIA AT MAX TORQUE	SENZA CARICO NO LOAD	CON MAX COPPIA AT MAX TORQUE
	V				mm	Ncm	rpm	mA
B 138 F • $\frac{6}{12}$ • 12	6 12	37,5	12,25	1,5	220	155	<30 <20	100 55
B 138 F • $\frac{6}{12}$ • 21	6 12	37,5	21,14	2,5	125	85	<30 <20	100 55
B 138 F • $\frac{6}{12}$ • 36	6 12	37,5	35,73	4	73	53	<30 <20	95 50
B 138 F • $\frac{6}{12}$ • 72	6 12	37,5	71,54	7	37	28	<30 <20	95 50
B 138 F • $\frac{6}{12}$ • 149	6 12	37,5	149,05	14	18	13	<30 <20	95 50
B 138 F • $\frac{6}{12}$ • 208	6 12	37,5	208,66	20	13	9	<30 <20	95 50
B 138 F • $\frac{6}{12}$ • 608	6 12	37,5	608,61	50	4,3	3,3	<30 <20	90 48
B 138 F • $\frac{6}{12}$ • 1470	6 12	37,5	1470,82	50	1,8	1,6	<30 <20	58 30



**micro
motors** s.r.l.

Viale Piave, 80/82 - 23879 VERDERIO INF. (LC) ITALY
Tel. 039510611-499 Fax 039513617
www.micromotorsrl.com, www.micromotors.eu e-mail: micromo@tin.it

X-ON Electronics

Largest Supplier of Electrical and Electronic Components

Click to view similar products for [micromotors](#) manufacturer:

Other Similar products are found below :

[E192-24-5](#) [B138 F-12-1470](#) [B138 F-12-149](#)