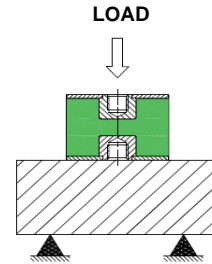
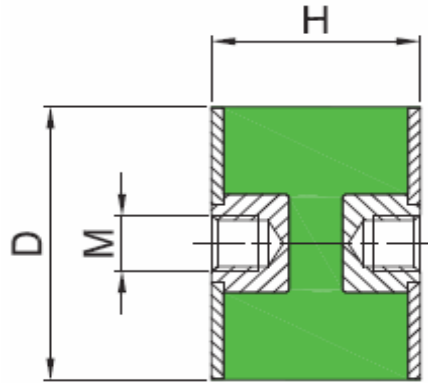
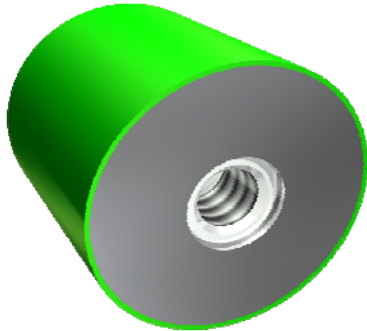


## Bobbin Mounts - Type DD (Female - Female)



The Type DD Bobbin Mounts are designed to be used on a wide range of applications, and can be used in compression or shear.

They are manufactured from Natural Rubber in a variety of hardnesses to suit the application, and have zinc plated steel end sections with either welded or cold formed threads.

This range comes with a Female thread on either end that are captive to avoid compromise to the integrity or functionality of the Rubber section.

Farnell Ref:	Fibet Ref:	D	H	M	IRHD	Stiffness (DaN/mm)	Max. Static Deflection (mm)	Maximum Stiffness (DaN)
4996630	2020DD06-45	20	20	M6	45	4.6	4.0	18.4
4996641	2020DD06-60	20	20	M6	60	8.6	4.0	34.4
4996677	2515DD06-70	25	15	M6	70	42.0	3.0	126.0
4996690	2525DD06-60	25	25	M6	60	11.9	5.0	59.5
4996707	4030DD08-60	40	30	M8	60	25.0	6.0	150.0
4996732	4035DD10-60	40	35	M10	60	18.7	7.0	130.9
4996744	4040DD08-60	40	40	M8	60	15.8	8.0	126.4
4996756	5030DD10-45	50	30	M10	45	28.4	5.0	142.0
4996781	5045DD10-45	50	45	M10	45	11.5	9.0	103.5
4996800	5045DD10-70	50	45	M10	70	30.0	9.0	270.0

## **X-ON Electronics**

Largest Supplier of Electrical and Electronic Components

*Click to view similar products for [fivistop](#) manufacturer:*

Other Similar products are found below :

[2025VD18-45](#) [5045DD10-45](#) [3025VD20-45](#) [2020VE18-60](#) [2522VV20-60](#) [2515VD18-45](#) [4030DD08-60](#) [2520VE18-60](#) [1008VD10-45](#)  
[1008VV10-60](#) [1008VE10-45](#) [2515VE18-60](#) [2020VV18-45](#) [2513VV13-45](#) [0808VV06-45](#)