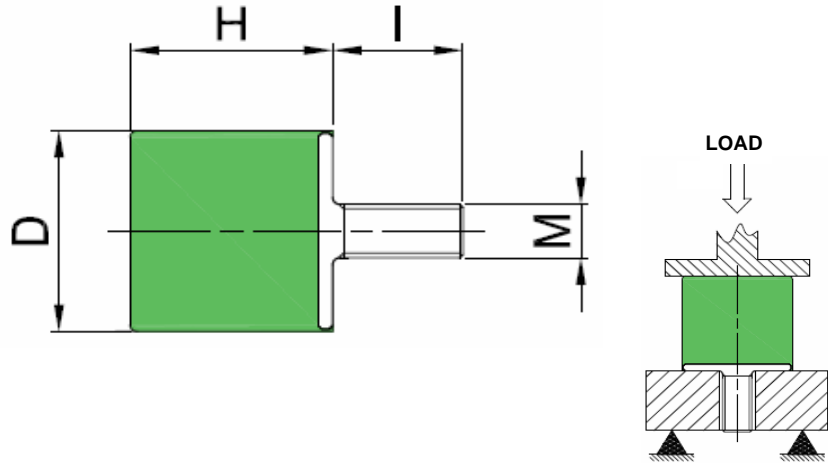
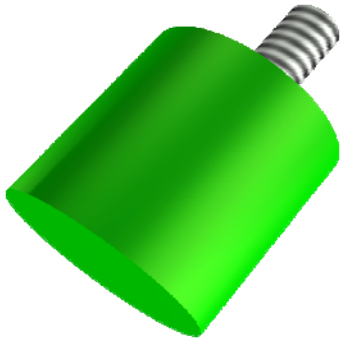




Bobbin Mount End Stop - Type VE (Male)



The Type VE Bobbin Mount End Stops are designed to be used on a wide range of applications to prevent shocks and over-loading thanks to their progressive absorption.

They are manufactured from Natural Rubber in a variety of hardnesses to suit the application, and have a zinc plated steel end section with either welded or cold formed threads.

This range comes with a Male thread on one end.

| Farnell Ref: | Fibet Ref: | D | H | M x I | IRHD | Stiffness (DaN/mm) | Max. Static Deflection (mm) | Maximum Stiffness (DaN) |
|--------------|-------------|----|----|----------|------|--------------------|-----------------------------|-------------------------|
| 1471947 | 0808VE06-45 | 8 | 8 | M3 X 6 | 45 | 2.9 | 1.6 | 4.6 |
| 4997220 | 1008VE10-45 | 10 | 8 | M4 X 10 | 45 | 3.6 | 1.6 | 5.8 |
| 4997244 | 2020VE18-60 | 20 | 20 | M6 X 18 | 60 | 7.4 | 4.0 | 29.6 |
| 4997256 | 2515VE18-45 | 25 | 15 | M6 X 18 | 45 | 13.8 | 3.0 | 41.4 |
| 4997268 | 2515VE18-60 | 25 | 15 | M6 X 18 | 60 | 26.4 | 3.0 | 79.2 |
| 4997270 | 2520VE18-60 | 25 | 20 | M6 X 18 | 60 | 17.7 | 4.0 | 70.8 |
| 4997281 | 4027VE23-60 | 40 | 27 | M8 X 23 | 60 | 26.0 | 5.4 | 140.4 |
| 4997293 | 4035VE23-45 | 40 | 35 | M8 X 23 | 45 | 9.0 | 7.0 | 63.0 |
| 4997359 | 7530VE37-70 | 75 | 30 | M12 X 37 | 70 | 229.5 | 6.0 | 1377.0 |
| | | | | | | | | |
| | | | | | | | | |
| | | | | | | | | |
| | | | | | | | | |
| | | | | | | | | |
| | | | | | | | | |
| | | | | | | | | |
| | | | | | | | | |
| | | | | | | | | |

X-ON Electronics

Largest Supplier of Electrical and Electronic Components

Click to view similar products for [fivistop](#) manufacturer:

Other Similar products are found below :

[2025VD18-45](#) [5045DD10-45](#) [3025VD20-45](#) [2020VE18-60](#) [2522VV20-60](#) [2515VD18-45](#) [4030DD08-60](#) [2520VE18-60](#) [1008VD10-45](#)
[1008VV10-60](#) [1008VE10-45](#) [2515VE18-60](#) [2020VV18-45](#) [2513VV13-45](#) [0808VV06-45](#)