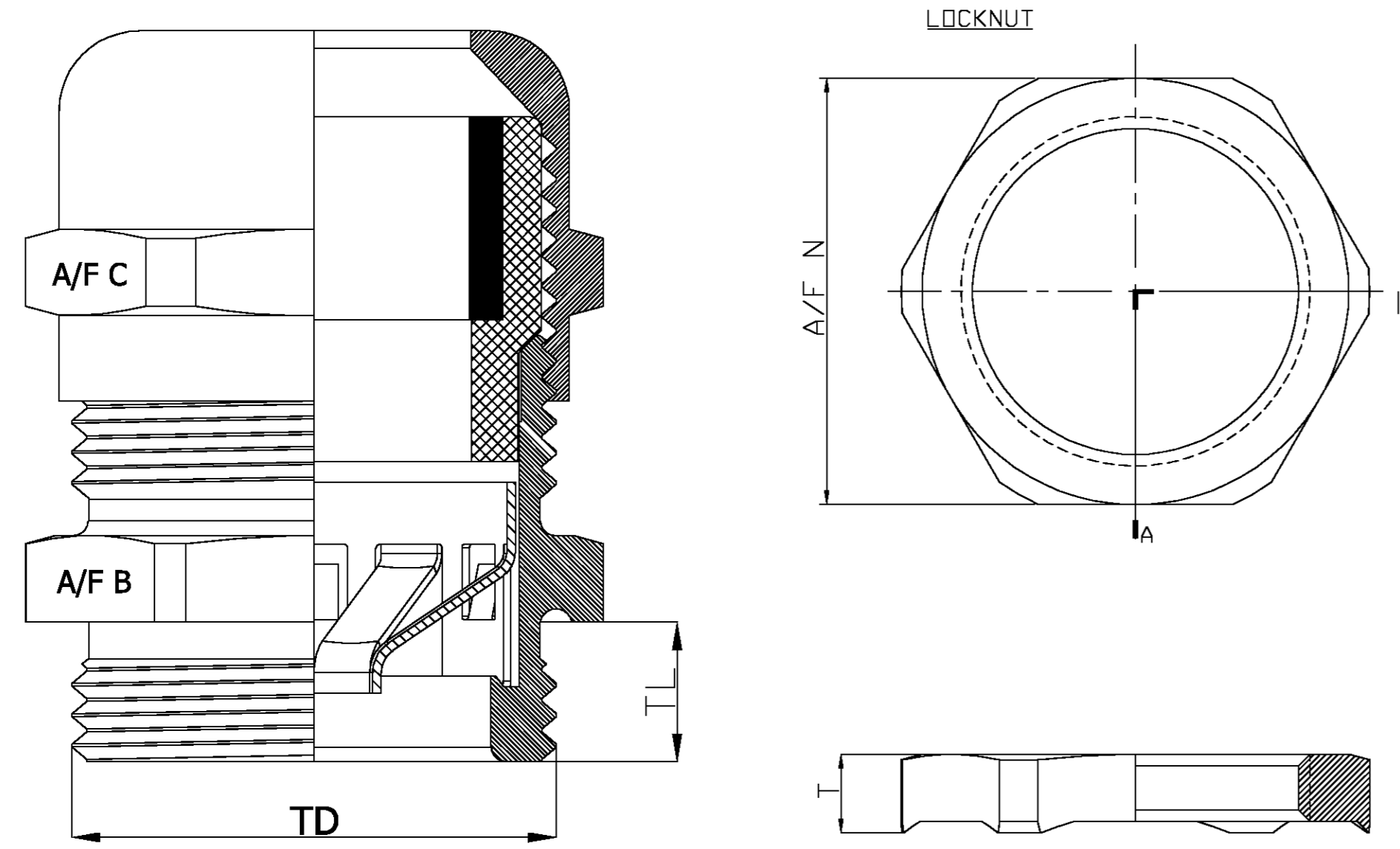


THIS DRAWING IS UNPUBLISHED. RELEASED FOR PUBLICATION  
 © COPYRIGHT BY TYCO ELECTRONICS CORPORATION. ALL RIGHTS RESERVED.

LOC		DIST		REVISIONS			
P	LTR	DESCRIPTION	DATE	DWN	APVD		
	A	FIRST ISSUE	6-11-02	PB	FWK		
	B	EBDO-0175-03	07-07-03	PB	FWK		
	C	EBDO-0184-03	11-07-03	PB	FWK		

NOTES:

- FOR TECHNICAL DATA REFER TO YOUR LOCAL TYCO ELECTRONICS SALES OFFICE.
- ALL DIMENSIONS ARE NOMINAL FOR REFERENCE ONLY UNLESS OTHERWISE STATED.
- FOR PACKAGING INFORMATION SEE PACKING SPECIFICATION 107-3315 TABLE ABOVE SHOWS PACKING LABEL DETAILS.
- 1 ASSEMBLY COMPRISES OF 1 OFF GLAND & CAP (AS SHOWN) INCLUDING NEOPRENE SEAL.



SIZE	TD mm	TL mm	T mm	Min. Shield Diameter mm	A/F BODY	A/F CAP	A/F NUT	Clamping Range ø mm	
PG 7	13.0	10.0	3.3	2.5	14	14	15	3.0	6.5
PG 9	16.0	10.0	3.3	3.0	17	17	18	4.0	8.0
PG 11	19.0	10.0	3.5	4.0	20	20	21	5.0	10.0
PG 13,5	21.0	10.0	3.5	5.0	22	22	23	6.0	12.0
PG 16	23.0	10.0	3.5	8.0	24	24	26	10.0	14.0
PG 21	29.0	12.0	4.0	11.0	30	30	32	13.0	18.0
PG 29	37.0	12.0	4.6	16.0	40	40	41	18.0	25.0
PG 36	47.0	14.0	5.6	19.0	50	50	51	22.0	32.0
PG 42	54.0	16.0	5.6	27.0	58	58	60	30.0	38.0
PG 48	59.0	18.0	6.1	30.0	64	64	64	34.0	44.0

Bag with Tyco Label & Instruction Sheet	1	PG EMC Gland PG48	Nickel Plate	1-1478885-0
	1	PG EMC Gland PG42	Nickel Plate	1478885-9
	1	PG EMC Gland PG36	Nickel Plate	1478885-8
	1	PG EMC Gland PG29	Nickel Plate	1478885-7
	1	PG EMC Gland PG21	Nickel Plate	1478885-6
	1	PG EMC Gland PG16	Nickel Plate	1478885-5
	5	PG EMC Gland PG13.5	Nickel Plate	1478885-4
	5	PG EMC Gland PG11	Nickel Plate	1478885-3
	5	PG EMC Gland PG9	Nickel Plate	1478885-2
	5	PG EMC Gland PG7	Nickel Plate	1478885-1
Packaging Style	Bag Qty	Description	Finish	Part No.

Part No.	Packing Label Description Line 1	Packing Label Description Line 2	Packing Label Description Line 3	Packing Label Description Line 4
1478885-1	EMC Gland with Locknut	PG7 (Long Thread 10mm)	Brass Nickel Plated	IP 68
1478885-2	EMC Gland with Locknut	PG9 (Long Thread 10mm)	Brass Nickel Plated	IP 68
1478885-3	EMC Gland with Locknut	PG11 (Long Thread 10mm)	Brass Nickel Plated	IP 68
1478885-4	EMC Gland with Locknut	PG13.5 (Long Thread 10mm)	Brass Nickel Plated	IP 68
1478885-5	EMC Gland with Locknut	PG16 (Long Thread 10mm)	Brass Nickel Plated	IP 68
1478885-6	EMC Gland with Locknut	PG21 (Long Thread 12mm)	Brass Nickel Plated	IP 68
1478885-7	EMC Gland with Locknut	PG29 (Long Thread 12mm)	Brass Nickel Plated	IP 68
1478885-8	EMC Gland with Locknut	PG36 (Long Thread 14mm)	Brass Nickel Plated	IP 68
1478885-9	EMC Gland with Locknut	PG42 (Long Thread 16mm)	Brass Nickel Plated	IP 68
1-1478885-0	EMC Gland with Locknut	PG48 (Long Thread 18mm)	Brass Nickel Plated	IP 68

THIS DRAWING IS A CONTROLLED DOCUMENT.

DWN: P.Bates 06NOV2002  
 CHK: F.W.King 6-11-02  
 APVD: F.W.King 6-11-02

Tyco Electronics Corporation  
 Stanmore, Middlesex, HA7 4RS

EMC GLAND AND LOCKNUT  
 BRASS - NICKEL PLATE (PG7 - PG48)

SIZE: A2 CAGE CODE: 00779 DRAWING NO: C=1478885 RESTRICTED TO: -

SCALE: 1:1 SHEET: 1 OF 1 REV: C

CUSTOMER DRAWING

## X-ON Electronics

Largest Supplier of Electrical and Electronic Components

*Click to view similar products for [Wire Identification](#) category:*

*Click to view products by [TE Connectivity](#) manufacturer:*

Other Similar products are found below :

[CU6337-000](#) [CU6342-000](#) [FCA-410-12](#) [11631010](#) [1-1768037-1](#) [1-1768037-2](#) [1-1768050-0](#) [PXLK-VI](#) [Q62184-1](#) [A64304-000](#) [QMT221](#)  
[HK032WE1NF038B](#) [1330-0519-10](#) [1395199-1](#) [1395200-1](#) [1395202-1](#) [DMVF050WE-300S6](#) [D-SCE-1K-2.4-50-4-CS7834](#) [1538738-1](#)  
[E90935-000](#) [EC1238-000](#) [EC1465-000](#) [EC1855-000](#) [EC1859-000](#) [EC1863-000](#) [EC5415-000](#) [EC7277-000](#) [EC7352-000](#) [EC7603-000](#)  
[EC7707-000](#) [EC7735-000](#) [EC7768-000](#) [EC7828-000](#) [EC7854-000](#) [EC7952-000](#) [EC8128-000](#) [1768037-8](#) [1768041-7](#) [NC-127191-10-9](#)  
[HS048WE2NF038B](#) [C03232-000](#) [HTCM-SCE-14-4H-9](#) [HTMS-3/16-9](#) [HT-SCE-1/4-2.0-4](#) [HT-SCE-3/16-2.0-4](#) [HTTMS-1/2-1.50-9](#) [HTTMS-](#)  
[CM-1/2-4H-9](#) [HX-SCE-19.0-50-9](#) [HX-SCE-6.4-50-4](#) [C25254-000](#)