



DeviceNet Field Attachable Connectors, 7/8"

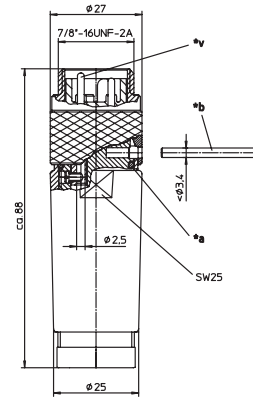
0936 DMC 301 | 0936 DMC 303



5-Pole, Male

DeviceNet, 5-pole, male field attachable 7/8" connector with screw terminal connection, cable outlet suitable for THIN and THICK DeviceNet cable.

0936 DMC 301 | 0936 DMC 303



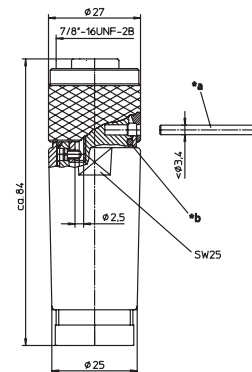
0936 DFC 301 | 0936 DFC 303



5-Pole, Female

DeviceNet, 5-pole, female field attachable 7/8" connector with screw terminal connection, cable outlet suitable for THIN and THICK DeviceNet cable.

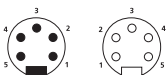
0936 DFC 301 | 0936 DFC 303



Pin Assignments

Face Views / 7/8"

5 pole





Be Certain with Belden

DeviceNet Field Attachable Connectors, M12

0936 DMC 301 | 0936 DMC 303 | 0936 DFC 301 | 0936 DFC 303

Technical Data

Environmental

Degree of protection IP 67 / NEMA 6P
 Operating temperature range -40°C (-40°F) / +90°C (+194°F)

Materials

Housing / Molded body PA
 Insert TPU, self-extinguishing
 Contact CuZn, pre-nickel and 0.8 microns gold-plated
 Coupling nut Aluminum, black anodized
 O-ring NBR

Mechanical

Mode of connection Screw terminals
 Connectable conductor max. 1.5 mm²

Electrical

Current rating 8 A
 Voltage rating 250 V

Part Number		Pins	Cable Type	Characteristics
0936 DMC 301		5	Thin	UL
0936 DMC 303		5	Thick	UL
	0936 DFC 301	5	Thin	UL
	0936 DFC 303	5	Thick	UL

X-ON Electronics

Largest Supplier of Electrical and Electronic Components

Click to view similar products for [Circular Metric Connectors](#) category:

Click to view products by [Lumberg](#) manufacturer:

Other Similar products are found below :

[1424048](#) [1021212](#) [600X518037X](#) [6STD09SAM99B70X](#) [6STD15PCR99B70A](#) [8R4000A16M020](#) [1200910002](#) [1201150041](#) [1203580030](#)
[1200700064](#) [1200700263](#) [1200700416](#) [1200730102](#) [1200770002](#) [1-2823588-2](#) [130203-0054](#) [1300140026](#) [1300150099](#) [1-3637-600-5205](#)
[1545399](#) [1594331](#) [1600413](#) [1612606](#) [1612618](#) [1614660](#) [1A4000-348](#) [CA06EW24-10P-B-03](#) [21036836414](#) [2823064-1](#) [1610759](#) [A1642LK-](#)
[II-T](#) [1R3006A20M005](#) [41-01016](#) [41-40011](#) [41-40017](#) [42-00006](#) [42-01015](#) [4-22279-4](#) [4-22281-1](#) [4-22284-9](#) [43-00002](#) [43-00113](#) [43-00130](#)
[43-01028](#) [43-01034](#) [43-01088](#) [43-01090](#) [43-01203](#) [43-01209](#) [43-01335](#)