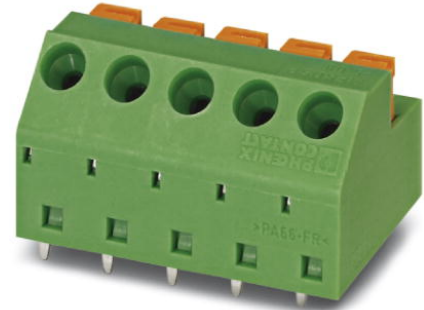


## MFKDSP/ 6-5,08

Order No.: 1791884

The illustration shows the 5-pos. version

<http://eshop.phoenixcontact.net/phoenix/treeViewClick.do?UID=1791884>

PC terminal block, Nominal current: 12 A, Nom. voltage: 250 V, Pitch: 5.08 mm, Number of positions: 6, Type of connection: Spring-cage conn., Assembly: Soldering, Conductor/PCB connection direction: 45 °, Color: green

### Commercial data

|                          |                    |
|--------------------------|--------------------|
| EAN                      | 4017918044480      |
| Pack                     | 50 pcs.            |
| Customs tariff           | 85369010           |
| Weight/Piece             | 0.007053 KG        |
| Catalog page information | Page 120 (CC-2009) |

### Product notes

WEEE/RoHS-compliant since:  
01/01/2003



<http://www.download.phoenixcontact.com>  
Please note that the data given here has been taken from the online catalog. For comprehensive information and data, please refer to the user documentation. The General Terms and Conditions of Use apply to Internet downloads.

### Technical data

#### Dimensions / positions

|             |         |
|-------------|---------|
| Length      | 16.2 mm |
| Pitch       | 5.08 mm |
| Dimension a | 25.4 mm |

|                     |            |
|---------------------|------------|
| Number of positions | 6          |
| Pin dimensions      | 0,5 x 1 mm |
| Hole diameter       | 1.3 mm     |

**Technical data**

|                                    |                                                         |
|------------------------------------|---------------------------------------------------------|
| Insulating material group          | I                                                       |
| Rated surge voltage (III/3)        | 4 kV                                                    |
| Rated surge voltage (III/2)        | 4 kV                                                    |
| Rated surge voltage (II/2)         | 4 kV                                                    |
| Rated voltage (III/2)              | 320 V                                                   |
| Rated voltage (II/2)               | 630 V                                                   |
| Connection in acc. with standard   | EN-VDE                                                  |
| Nominal current $I_N$              | 12 A                                                    |
| Nominal voltage $U_N$              | 250 V                                                   |
| Nominal cross section              | 1 mm <sup>2</sup>                                       |
| Maximum load current               | 12 A (with 1.5 mm <sup>2</sup> conductor cross section) |
| Insulating material                | PA                                                      |
| Inflammability class acc. to UL 94 | V0                                                      |
| Stripping length                   | 10 mm                                                   |

**Connection data**

|                                                                            |                      |
|----------------------------------------------------------------------------|----------------------|
| Conductor cross section solid min.                                         | 0.2 mm <sup>2</sup>  |
| Conductor cross section solid max.                                         | 1.5 mm <sup>2</sup>  |
| Conductor cross section stranded min.                                      | 0.2 mm <sup>2</sup>  |
| Conductor cross section stranded max.                                      | 1 mm <sup>2</sup>    |
| Conductor cross section stranded, with ferrule without plastic sleeve min. | 0.25 mm <sup>2</sup> |
| Conductor cross section stranded, with ferrule without plastic sleeve max. | 0.75 mm <sup>2</sup> |
| Conductor cross section stranded, with ferrule with plastic sleeve min.    | 0.25 mm <sup>2</sup> |
| Conductor cross section stranded, with ferrule with plastic sleeve max.    | 0.75 mm <sup>2</sup> |
| Conductor cross section AWG/kcmil min.                                     | 24                   |
| Conductor cross section AWG/kcmil max                                      | 16                   |

**Certificates / Approvals**



Certification CSA, CUL, GOST, UL

**CSA**

|                       |       |
|-----------------------|-------|
| Nominal voltage $U_N$ | 300 V |
| Nominal current $I_N$ | 10 A  |
| AWG/kcmil             | 22-18 |

**CUL**

|                       |       |
|-----------------------|-------|
| Nominal voltage $U_N$ | 300 V |
| Nominal current $I_N$ | 3.6 A |
| AWG/kcmil             | 22-18 |

**UL**

|                       |       |
|-----------------------|-------|
| Nominal voltage $U_N$ | 300 V |
| Nominal current $I_N$ | 3.6 A |
| AWG/kcmil             | 22-18 |

**Accessories**

| Item           | Designation              | Description                                                                                                                                                                 |
|----------------|--------------------------|-----------------------------------------------------------------------------------------------------------------------------------------------------------------------------|
| <b>Marking</b> |                          |                                                                                                                                                                             |
| 0804303        | SK 5,08/3,8: 0-9         | Marker card, printed horizontally, self-adhesive, 10-section marker strip, 12 identical decades marked 0-9, sufficient for 120 terminal blocks                              |
| 0804293        | SK 5,08/3,8:FORTL.ZAHLEN | Marker card, printed horizontally, self-adhesive, 12 identical decades marked 1-10, 11-20 etc. up to 91-(99)100, sufficient for 120 terminal blocks                         |
| 0805085        | SK 5,08/3,8:SO           | Marker card, special printing, self-adhesive, labeled acc. to customer requirements, 12 identical marker strips per card, max. 25-position labeling per strip, color: white |
| 0805412        | SK 5,08/3,8:UNBEDRUCKT   | Marker cards, unprinted, with pitch divisions, self-adhesive, 10-section marker strips, 12 strips per card, can be labeled with the M-PEN                                   |

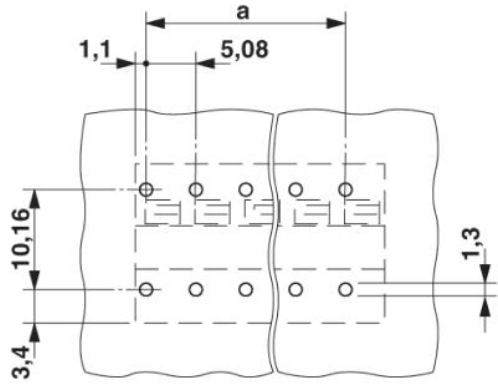
**Plug/Adapter**

|         |        |            |
|---------|--------|------------|
| 0201744 | MPS-MT | Metal part |
|---------|--------|------------|

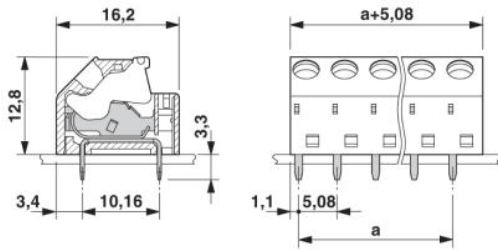
|         |     |                            |
|---------|-----|----------------------------|
| 0201647 | RPS | Reducing plug, Color: gray |
|---------|-----|----------------------------|

**Diagrams/Drawings**

Drilling plan/solder pad geometry



Dimensioned drawing



**Address**

PHOENIX CONTACT GmbH & Co. KG  
Flachsmarktstr. 8  
32825 Blomberg, Germany  
Phone +49 5235 3 00  
Fax +49 5235 3 41200  
<http://www.phoenixcontact.com>



© 2010 Phoenix Contact  
Technical modifications reserved;

## X-ON Electronics

Largest Supplier of Electrical and Electronic Components

*Click to view similar products for [phoenix contact manufacturer](#):*

Other Similar products are found below :

[1203259](#) [3240366](#) [1893300](#) [1623633](#) [2814605](#) [3240098](#) [0201391](#) [CRIMPFOX 16 S](#) [CRIMPSET 25](#) [7001438](#) [ETD-BL-1T-F-300S](#) [MCR-1CLP-I-I-00](#) [MCR-4CLP-I-I-00](#) [MCR-DAC 8-I- 4-BUS](#) [FL EPA WMS](#) [FLK 50/EZ-DR/ 400/KONFEK/S](#) [FLS PB M12 DO 8 M12-2A](#) [PPS CD BLADE](#) [PSI-MOS-DNET CAN/FO 660/BM](#) [PSM-ME-RS232/RS232-P](#) [PSM PTK-4](#) [PSM-SET-FSMA/4-KT](#) [PSR-SCP-24DC/TS/SDI8/SDIO](#) [PSR-SCP- 24DC/URD3/4X1/2X2](#) [PT 2X2- 5DC-ST](#) [1202580](#) [1203534](#) [1205985](#) [1206308](#) [1207420](#) [QUINT-BAT/24DC/12AH](#) [1204038](#) [1212041](#) [1212096](#) [1212162](#) [1212171](#) [1212202](#) [1212250](#) [1212304](#) [1212380](#) [1212480](#) [1212485](#) [1212488](#) [1212500](#) [1212511](#) [1212578](#) [1212584](#) [1212585](#) [1212592](#) [1212646](#)