

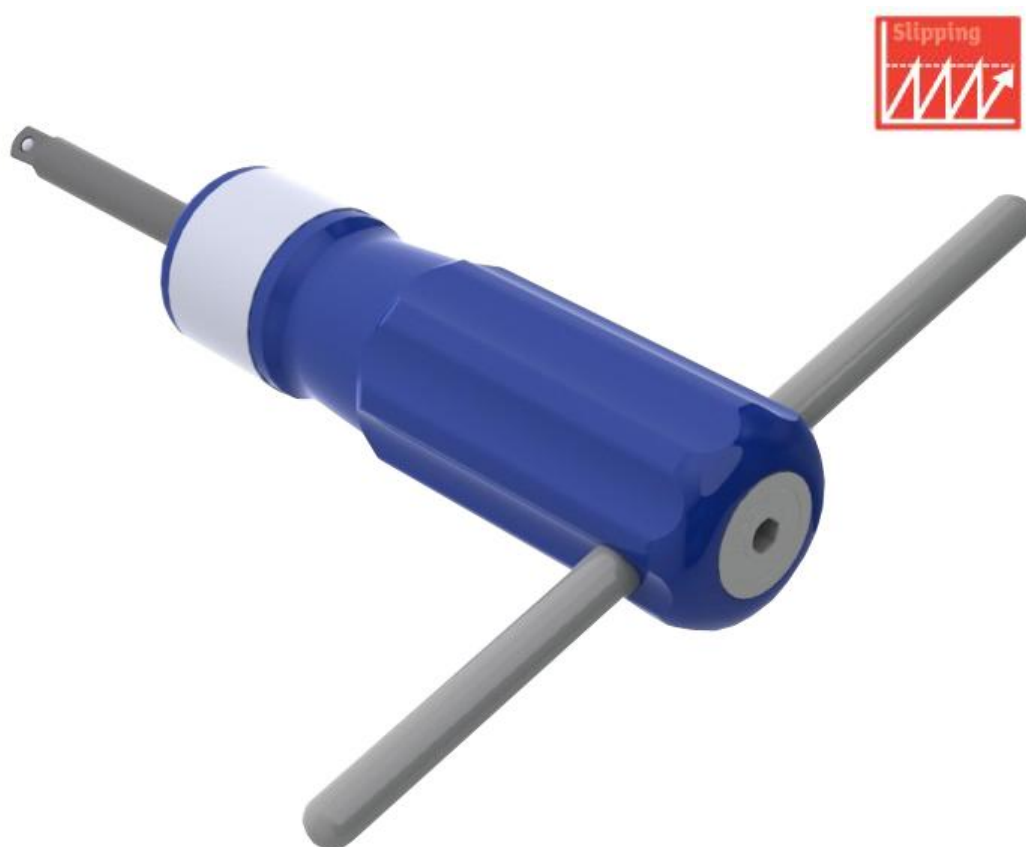


TAKING THE RISK
OUT OF TIGHTENING

Preset Torque Screwdrivers

Minor, Standard, TLS0022, TLS1360

Drehmomentbegrenzende Schraubendreher,
Tournevis dynamométrique a Pre-Reglage,
Atornilladores Con Limitador De Par – Grifiviti Limitadori Di Coppia



Operators Manual

Instruction Part Number P17050 Issue 3



Products:	TLS0022, Minor, Standard, TLS1360
Mechanism Type:	Slipping
ISO 6789 Designation:	Type 2, Class F
Repeatability:	+/- 6% of Torque Setting
Calibration Period:	Every 12 Months or 5000 cycles (minimum)

Safety & Maintenance

- Use only as a Torque Screwdriver.
- Do not use as a hammer, chisel or pry bar.
- Only hold the tool using the hand grip.
- For increased leverage, use the sliding T-Bar provided (TLS1360 Only)
- Always ensure that the screwdriver is in correct alignment with the fastener.
- Torque tools should be regularly calibrated and inspected to ensure correct operation.
- Ensure the tool is clean and free of oil, grease and water before use.
- Never dip into cleaning fluid or petroleum.

Spare parts, servicing and calibration instructions are available from **Torqueleader**. Please contact us or visit www.torqueleader.com for further information.

Adjustment Procedure

1



Check Setting

Using a Torque Analyser, check the setting of the screwdriver.

2

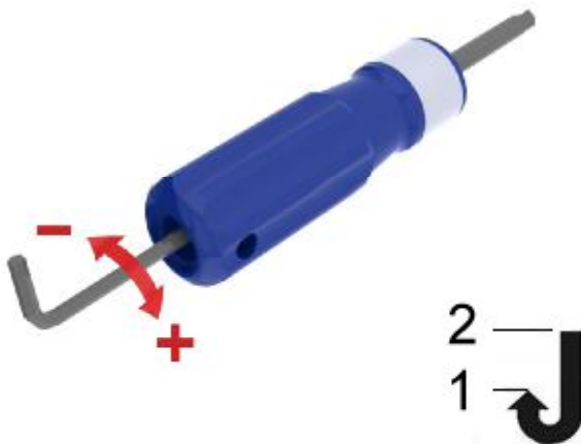


Insert Adjusting Key

If adjustment is necessary, use a 3/16" Hexagon Key to remove the plastic end cap and engage with the adjusting screw inside.

On the TLS 1360, the 'T-Bar' must be removed.

3



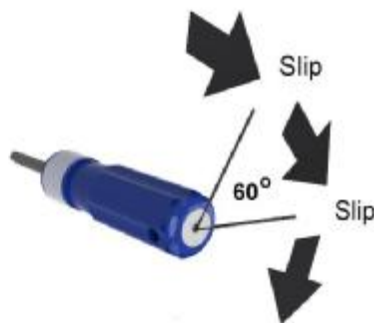
Increase Torque

Rotate the key clockwise until the correct torque is shown consistently on the analyser. (10 readings).

Reduce Torque

When adjusting, always approach the required torque from a lower setting.

To reduce the torque, rotate the key anti-clockwise past your setting, then increase torque to the required value.



Torque Limiting Screwdrivers are designed for use with sockets, screwdriver bits and blades.

At the set torque, the handle rotates through an angle of 60° before resetting.

Torqueleader – Taking The Risk out Of Tightening

Measure



- Torque measuring tools are used in Research, Development, Inspection and Quality Control where there is a need to check torque settings. This type of tool can also be used in a servicing or Production environment to apply torque.
- Measuring Torque Tools feature a dial or digital readout and are available in screwdriver or wrench formats, covering torque values up to 2000 N.m.

Apply



- Torque applying tools are used to apply a set torque to a fastener. The tool will **Click**, **Break** or **Slip** to signal to the operator when the set torque has been achieved.
- **Preset** tools are ideal for production areas where the same torque is applied repeatedly.
- **Calibrated Scale** tools are operator adjustable and are ideal for servicing applications where ease of adjustment is essential.

Calibrate



Torqueleader offer two types of Torque Analyser:

- **Mechanical** Analysers offer a low cost robust and easy to use device, designed to set and calibrate low range torque tools.
- **Digital** Analysers allow the user to download test results, test powered torque tools and reach higher torque values than are possible using mechanical analysers.

Torqueleader's Calibration Service

Professional, Quality and Competitive



- Regular calibration to International Standards is vital to ensure that your torque equipment is operating at its peak performance.
- We have a UKAS Calibration Laboratory, accredited to ISO/IEC 17025:2005 on site, capable of recalibrating most Hand Torque Tools, Analysers and Transducers in accordance with the International Standards.

Torqueleader, Tannery Lane, Gosden Common,
Bramley, Guildford, Surrey. GU5 0AJ

Sales Hotline: +44 (0) 1483 894476
Switchboard: +44 (0) 1483 892772
Faxsmile: +44 (0) 1483 898536
Email: salesandrepairs@torqueleader.co.uk



TAKING THE RISK OUT OF TIGHTENING

Torqueleader is a partner in the **GEORE** Group

www.torqueleader.com

X-ON Electronics

Largest Supplier of Electrical and Electronic Components

Click to view similar products for [torqueleader](#) manufacturer:

Other Similar products are found below :

[CRS 100-1360 FH](#) [QTC 55 0.9-55NM 035220](#) [ESD 450 FH](#) [ADS 25](#) [TT 50 F/HEX](#) [ESD 25 FH](#) [PRO 150 FH](#) [PRO 450 FH](#) [PRIME 450 FH](#)
[017500](#) [016500](#) [015200](#) [QSN 120 FH](#) [ESD 1350 FH](#) [CRS 100-0135 FH](#)