

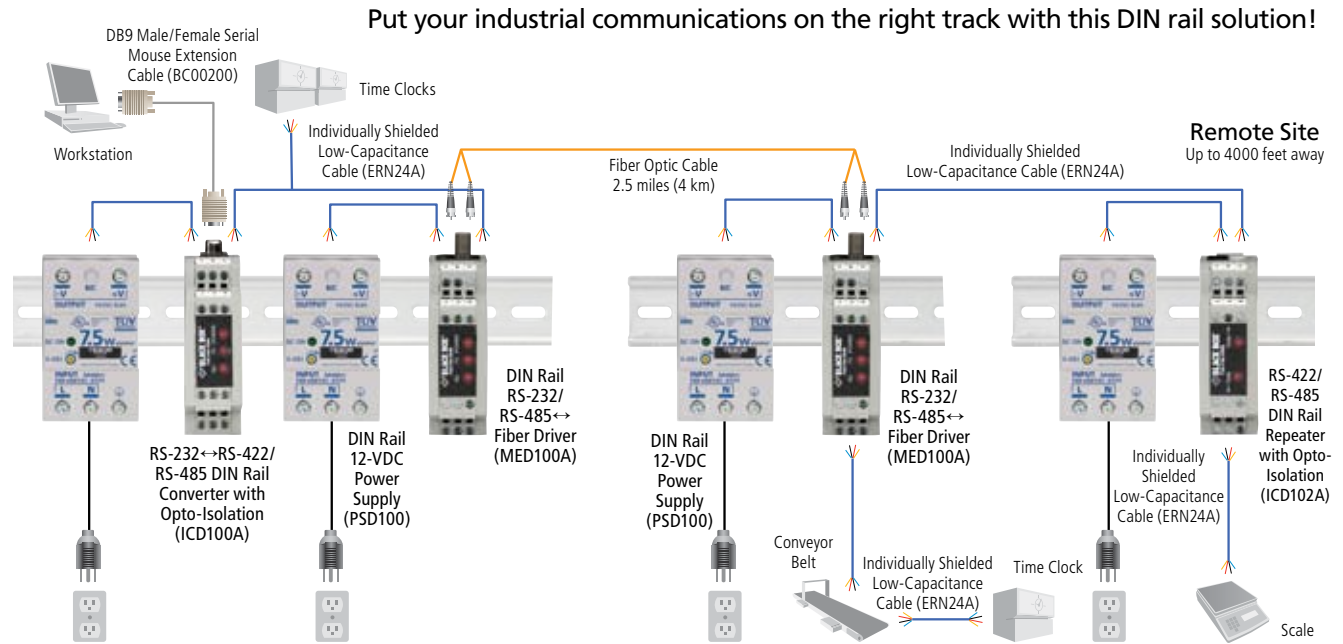
DIN Rail RS-232/RS-485↔Fiber Driver

Put your industrial communications
on the right track with
this convenient DIN rail
fiber driver.



FEATURES

- » Enables any two async serial devices to communicate half- or full-duplex over two multimode ST® fibers at distances up to 2.5 miles (4 km).
- » RS-232 signals are supported up to 115.2 kbps; RS-422 or RS-485 signals are supported up to 460.8 kbps.
- » Replaces converters and isolators when you connect remote equipment.



Technically Speaking

DIN rail usage.

DIN rail is an industry-standard metal rail, usually installed inside an electrical enclosure, which serves as a mount for small electrical devices specially designed for use with DIN rails. These devices snap right onto the rails, sometimes requiring a set screw, and are then wired together.

Different devices are available for mounting on DIN rails: terminal blocks, interface converters, media converters, switches, repeaters, surge protectors, or PLCs, to name a few.

DIN rails are a space-saving way to accommodate components. And because DIN rail devices are so easy to install, replace, maintain, and inspect, this is an exceptionally convenient system that has become very popular in recent years.

A standard DIN rail is 35 millimeters wide with raised-lip edges, its dimensions outlined by the Deutsche Institut für Normung, a German standardization body. Rails are generally available in aluminum or steel and may be cut for installation. Depending on the requirements of the mounted components, the rail may need to be grounded.

TECH SPECS

- Distance (Maximum)** — 2.5 mi. (4 km)
Operation — RS-232: Half- or full-duplex;
 RS-485: 2-wire half-duplex or 4-wire full-duplex;
 RS-422: Full-duplex;
 Fiber ring: Half-duplex over multimode; all transmissions are async
Speed — RS-232: Up to 115.2 kbps;
 RS-422/RS-485: Up to 460.8 kbps
CE Approval — Yes
Connectors — (2) 6-position terminal blocks, (1) pair of ST
Operating Environment — Temperature: -40 to +176°F (-40 to +80°C);
 Humidity: Up to 95% noncondensing
Power — 10–30 VDC, 140 mA
Size — 1" H x 2.3" W x 4.3" D (2.5 x 5.8 x 10.9 cm)

Item	Code
DIN Rail RS-232/RS-485↔Fiber Driver	MED100A
You may also need...	
DIN Rail, 1-m (3.2-ft.)	DR100
DB25 to Terminal Block Adapter	IC980
To power four fiber drivers, order...	
DIN Rail 12-VDC Power Supply	PSD100

X-ON Electronics

Largest Supplier of Electrical and Electronic Components

Click to view similar products for [black box manufacturer](#):

Other Similar products are found below :

[MED100A](#) [BC00231](#) [IC820A](#) [EVNSL81-0020](#) [LGH008A](#) [LBH100AE-H-PS](#) [FT3401](#) [FMTP5ES-10PAK](#) [LBS005A](#) [EL06MS-04](#) [FA440-R2](#)
[EL04MS-04](#) [FMT1081](#)