

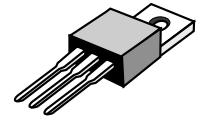
Switchmode Dual Ultrafast Power Rectifiers

... Designed for use in switching power supplies, inverters and as free wheeling diodes. These state-of-the-art devices have the following features:

- * High Surge Capacity
- * Low Power Loss, High efficiency
- * Glass Passivated chip junctions
- * 150 °C Operating Junction Temperature
- * Low Stored Charge Majority Carrier Conduction
- * Low Forward Voltage , High Current Capability
- * High-Switching Speed 35 Nanosecond Recovery Time
- * Plastic Material used Carries Underwriters Laboratory

**ULTRA FAST
RECTIFIERS**

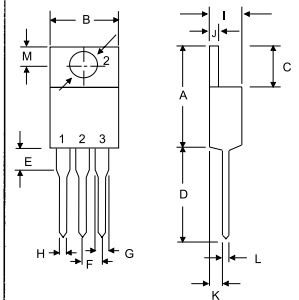
**16 AMPERES
50 -- 200 VOLTS**



TO-220AB

MAXIMUM RATINGS

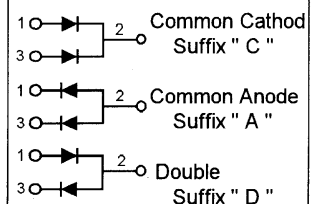
Characteristic	Symbol	U16C				Unit
		05	10	15	20	
Peak Repetitive Reverse Voltage Working Peak Reverse Voltage DC Blocking Voltage	V_{RRM} V_{RWM} V_R	50	100	150	200	V
RMS Reverse Voltage	$V_{R(RMS)}$	35	70	105	140	V
Average Rectifier Forward Current Per Leg Per Total Device $T_c=125^\circ\text{C}$	$I_{F(AV)}$	8.0 16				A
Peak Repetitive Forward Current (Rate V_R , Square Wave, 20kHz, $T_c=125^\circ\text{C}$)	I_{FM}	16				A
Non-Repetitive Peak Surge Current (Surge applied at rate load conditions halfwave, single phase, 60Hz)	I_{FSM}	150				A
Operating and Storage Junction Temperature Range	T_J, T_{stg}	- 65 to + 150				°C



DIM	MILLIMETERS	
	MIN	MAX
A	14.68	15.32
B	9.78	10.42
C	6.01	6.52
D	13.06	14.62
E	3.57	4.07
F	2.42	2.66
G	1.12	1.36
H	0.72	0.96
I	4.22	4.98
J	1.14	1.36
K	2.20	2.97
L	0.33	0.55
M	2.48	2.98
O	3.70	3.90

ELECTRICAL CHARACTERISTICS

Characteristic	Symbol	U16C				Unit
		05	10	15	20	
Maximum Instantaneous Forward Voltage ($I_F=8.0$ Amp, $T_c = 25^\circ\text{C}$) ($I_F=8.0$ Amp, $T_c = 100^\circ\text{C}$)	V_F	0.975 0.880				V
Maximum Instantaneous Reverse Current (Rated DC Voltage, $T_c = 25^\circ\text{C}$) (Rated DC Voltage, $T_c = 125^\circ\text{C}$)	I_R	10 500				uA
Reverse Recovery Time ($I_F = 0.5$ A, $I_R = 1.0$, $I_{rr} = 0.25$ A)	T_{rr}	35				ns
Typical Junction Capacitance (Reverse Voltage of 4 volts & f=1 MHz)	C_p	120				pF



U16C05 Thru U16C20

FIG-1 TYPICAL FORWARD CHARACTERISTICS

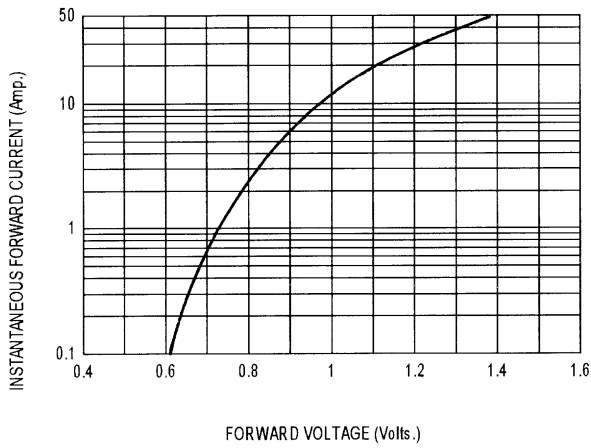


FIG-2 TYPICAL REVERSE CHARACTERISTICS

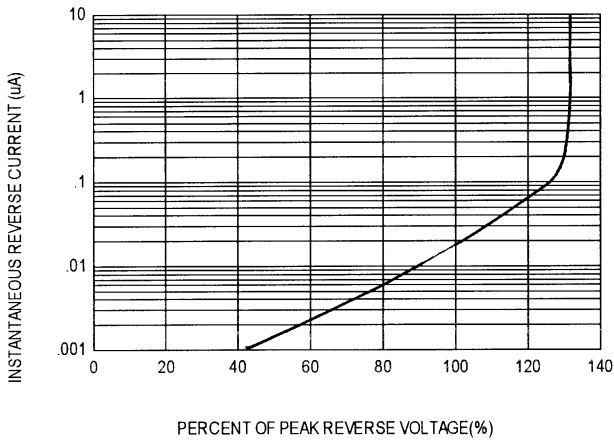


FIG-3 FORWARD CURRENT DERATING CURVE

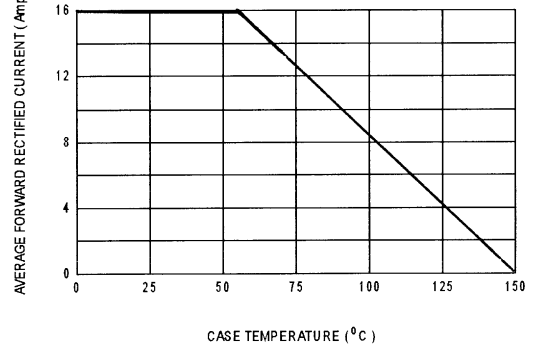


FIG-4 TYPICAL JUNCTION CAPACITANCE

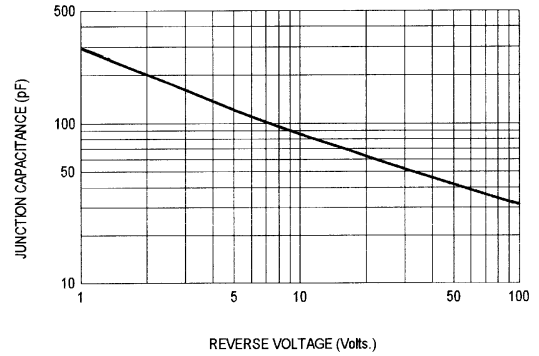
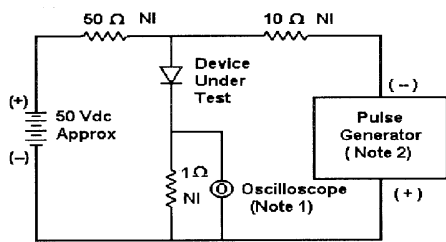
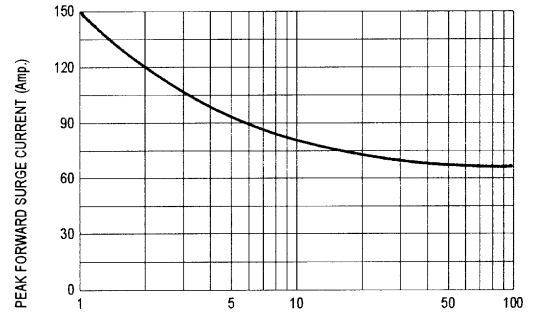
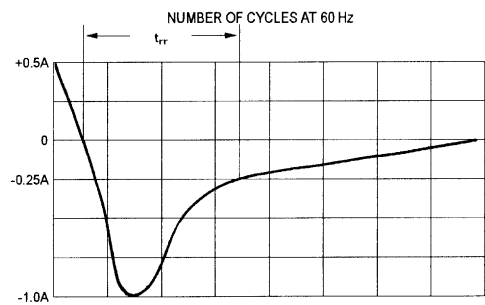


FIG-5 PEAK FORWARD SURGE CURRENT



- Notes:
 1. Rise Time = 7 ns max. Input Impedance = 1 M Ω, 22 pF
 2. Rise Time = 10 ns max. Input Impedance = 50 Ω



Set time base for 10 ns/div

Fig-6 Reverse Recovery Time Characteristic and Test Circuit Diagram

X-ON Electronics

Largest Supplier of Electrical and Electronic Components

Click to view similar products for [mospec](#) manufacturer:

Other Similar products are found below :

[MBRF10200C](#) [MBR10100CK](#) [MBR10150CK](#) [MBRF20150C](#) [MBRF10200CK](#) [MBR10100CL](#) [MBR10150CL](#) [MBRF20150CK](#)
[MBRF20200CL](#) [SR5100M](#) [SR2100M](#) [SR24](#) [MBRF20200CK](#) [MBRF20100CL](#) [MBR30100CT](#) [U30D40C](#) [SR3150M](#) [SK24](#) [SR5100L](#)
[SR306M](#) [SK310](#) [ABS8](#) [SR504M](#) [SR506M](#) [SR504L](#) [SR306L](#) [SRT5100M](#) [SR304M](#) [U30D20A](#) [MBRF10150CK](#) [SF34](#) [SR506L](#) [SRM504M](#)
[SR5150M](#) [SR3100M](#) [SRT5150](#) [SRT3100M](#) [U12C20A](#) [SR3100L](#) [ABS10](#) [SR2100L](#) [U16C20C](#) [MB8F 46MIL](#)