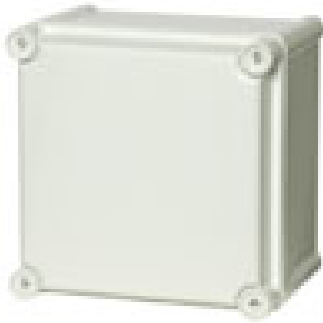


SOLID PC 1919 13 G



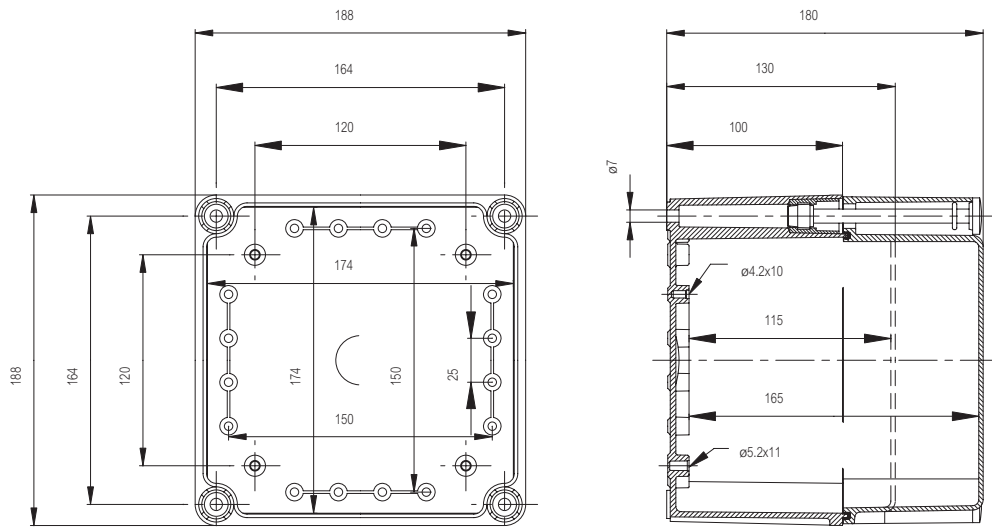
Sample photo

Order symbol: PC 1919 13 G
Product nbr: 5330359
Description: Enclosure, PC
Remarks: Grey cover

EAN: 6418074005403
El. number:
Finland: 3423701
Italy: 7401010
Sweden: 2539406

Including: Base with screws for mounting plate/DIN-rail, cover with PUR gasket and polyamide cover screws.

Dimensions:		Length	Width	Height	Rating:
mm:		188	188	130	Ingress Protection (EN 60529): IP 66/67
inch:		7.4	7.4	5.1	Impact Resistance (EN 62262): IK 08/09
Materials:					
Material:		Polycarbonate			Electrical insulation: Totally insulated
Base colour:		RAL 7035			Halogen free (DIN/VDE 0472, Part 815): Yes
Cover colour:		RAL 7035			UV resistance: UL 508
Cover screws material:		Polyamide			Flammability Rating (UL 746 C 5): UL 746C 5V
Cover screws colour:		Grey			Glow Wire Test (IEC 695-2-1) °C: 960
Gasket material:		Polyurethane			NEMA Class: NEMA 1, 3, 3S, 4, 4X, 6, 6P, 12
Temperatures:					
Short term:		-40 ... 120 °C			Certificates:
Continuous:		-40 ... 80 °C			Underwriters Laboratories
Short term:		-40 ... 250 °F			Fimko
Continuous:		-40 ... 175 °F			Europe EN 62208: 2003
Accessories:					
EKHVT		Mounting plate			UL Canada
EKHXT		Mounting plate Pertinax			Gost R
EKV 12		DIN-35 Mounting rail			



X-ON Electronics

Largest Supplier of Electrical and Electronic Components

Click to view similar products for [fibox manufacturer](#):

Other Similar products are found below :

[PCM 175/75 T](#) [ABQ3 364015](#) [ABS 150/60 HG](#) [ABS 175/60 HG](#) [ABS 175/75 HG](#) [ABS F 65 G](#) [ARCA 403015](#) [EKMVT](#) [CAB P 302017](#)
[CAB PC 303018 G3B](#) [CAB PCQ 302017 T](#) [9822003](#) [ABS 150/125 HG](#) [ABS 150/75 HG](#) [ABS 175/100HG](#) [ABS 95/75 HG](#) [ABS F 85 G](#) [PCT](#)
[081206](#) [ARCA 302015](#) [PC 5628 13 T](#) [TAM 090706 MC](#) [ARCA 406021](#) [MP 6040](#) [ARCA 604021](#) [ARCA 806030](#) [5330360](#) [EKOE 130 G](#)
[2539543](#) [PC 100/125 HG](#) [PC 100/75 HT](#) [PC 300/150 ZG](#) [PCM 175/150 G](#) [PCM 125/100 G](#) [PC 125/125 HG](#) [ABS D 65 G](#) [7811060](#) [7811130](#)
[ALN 121208](#) [ARCA 403021N](#) [7094220](#) [7094450](#) [PC 1919 13 T-2FSH](#) [PC 200/150 HT](#) [PCM 175/100 T](#) [PCT 121210](#) [9821007](#) [EKPE 130 G](#)
[ENCLOSURE](#) [ABS 175/125 HG](#) [ABS 175/150 HG](#) [ABS 1919 13 G](#)