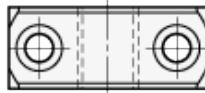
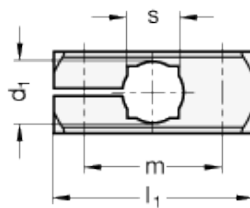
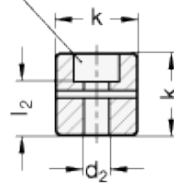


# GN 477

Clamp mountings



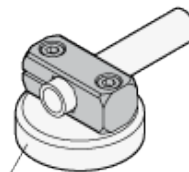
Countersunk for  
socket cap screw DIN 912



Adjustable  
clamping lever GN 511



Application example



Retaining magnet GN 51.6



## technical informations

### Material

Aluminium.

### Finish

- Version MT: matte, ground.
- Version ELS: anodised, black.

### Features and applications

The clamp mountings GN 477 have no thread. Fixing or clamping is made via two threads on the attachment side. The bore spacing  $m$  of the clamp mountings GN 477 is matched with the foot clamp mountings GN 473 as well as retaining magnets GN 51.6 and the flanged bolts GN 480.

### Accessories

Clamping kits [GN 511](#) (clamping handles GN 300.1 with distance bushing)

| Standard Elements | Main dimensions                 |    |       |       |       |    |            | Clamping kits | Weight |
|-------------------|---------------------------------|----|-------|-------|-------|----|------------|---------------|--------|
| Description       | $d_1$ Bore B for shaft tol. h11 | k  | $d_2$ | $l_1$ | $l_2$ | m  | s Square V | for $d_3$     | g      |
| GN 477-B8-MT      | B8                              | 14 | M 4   | 31.5  | 10    | 22 | -          | GN 511-M4-20  | 11     |
| GN 477-B10-MT     | B10                             | 16 | M 5   | 38    | 10.5  | 27 | 8          | GN 511-M5-25  | 18     |
| GN 477-B12-MT     | B12                             | 16 | M 5   | 38    | 10.5  | 27 | 10         | GN 511-M5-25  | 37     |
| GN 477-B15-MT     | B15                             | 20 | M 6   | 45    | 14    | 32 | 12         | GN 511-M6-25  | 40     |
| GN 477-B16-MT     | B16                             | 20 | M 6   | 45    | 14    | 32 | -          | GN 511-M6-25  | 29     |
| GN 477-B20-MT     | B20                             | 25 | M 6   | 50    | 14    | 36 | 16         | GN 511-M6-32  | 52     |
| GN 477-B8-ELS     | B8                              | 14 | M 4   | 31.5  | 10    | 22 | -          | GN 511-M4-20  | 11     |
| GN 477-B10-ELS    | B10                             | 16 | M 5   | 38    | 10.5  | 27 | 8          | GN 511-M5-25  | 18     |
| GN 477-B12-ELS    | B12                             | 16 | M 5   | 38    | 10.5  | 27 | 10         | GN 511-M5-25  | 20     |
| GN 477-B15-ELS    | B15                             | 20 | M 6   | 45    | 14    | 32 | 12         | GN 511-M6-25  | 31     |
| GN 477-B16-ELS    | B16                             | 20 | M 6   | 45    | 14    | 32 | -          | GN 511-M6-25  | 29     |
| GN 477-B20-ELS    | B20                             | 25 | M 6   | 50    | 14    | 36 | 16         | GN 511-M6-32  | 52     |



STANDARD MACHINE ELEMENTS WORLDWIDE

## X-ON Electronics

Largest Supplier of Electrical and Electronic Components

*Click to view similar products for [Sensor Fixings & Accessories](#) category:*

*Click to view products by [Elesa & Ganter](#) manufacturer:*

Other Similar products are found below :

[EC18-WELL](#) [FMD411](#) [SA9Z-F11](#) [E4R-R12A-CS3M010](#) [E4R-R12A-CS3M020](#) [BS-1T CHITAN](#) [ICAB-1](#) [SA9Z-S07PN02](#) [ECT18-WELL](#)  
[57142-000](#) [79450811](#) [734209100](#) [ASI M12 VS](#) [440148](#) [430233](#) [440101](#) [440102](#) [440121](#) [440122](#) [440131](#) [440132](#) [440135](#) [440147](#)  
[XSZB108](#) [Y92E-BC12](#) [Y92E-BC18](#) [10901](#) [0909](#) [UAC 101](#) [810-12AC/DC](#) [843-12AC/DC](#) [844-12AC/DC](#) [771000-6011](#) [771000-6202](#) [812-](#)  
[12AC/DC](#) [834-12AC/DC](#) [909G](#) [910G](#) [913G](#) [92.031.9058.1](#) [92.032.9058.1](#) [925G](#) [771000-6010](#) [GN 473-B12-MT](#) [GN 474-B12-B12-MT](#)  
[GN 474-B16-B16-MT](#) [GN 479-B12-30](#) [XSZB118](#) [XSZB112](#) [XSZB130](#) [611-12DC](#) [08 2424 010 000](#) [733877001](#) [ELST-M PG9](#)