

GN 479

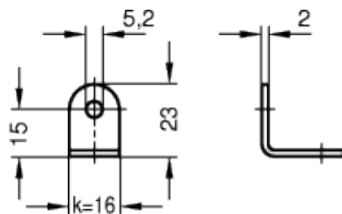
Sensor holders



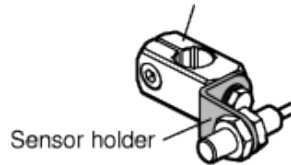
INOX
Stainless Steel



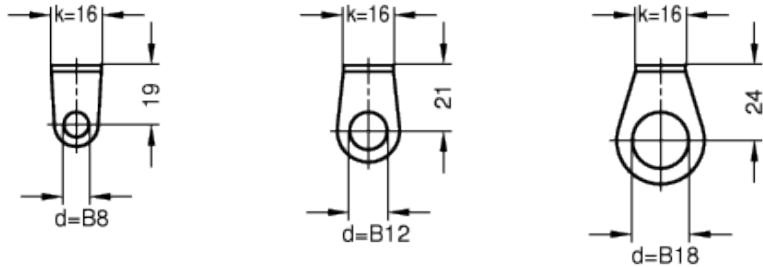
Swivel width $k=16$



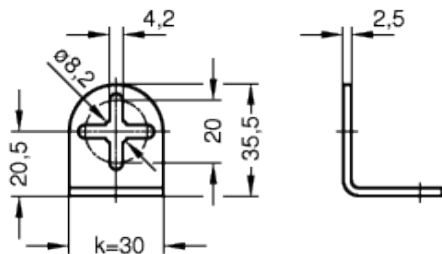
Clamp mounting GN 478



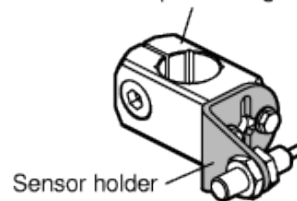
Front views for different bore- $\varnothing d$



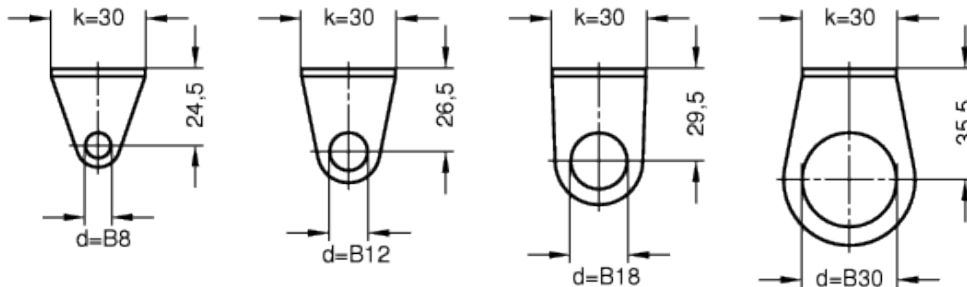
Swivel width $k=30$



Clamp mounting GN 478



Front views for different bore- $\varnothing d$



technical informations

Material

AISI 304 stainless steel, matte shot-blasted.

Assembly

Fixing screws are not included parts of the order.

Features and applications

The sensor holders GN 479 are designed for holding sensors attached with two lock nuts.

The attachment bore matches the central thread of clamp mountings GN 478. For $k=30$, the cross-shaped oblong holes long provide extra adjustability and allow the use of two fixing screws.

Fixing screws to be ordered separately.

Standard Elements	Main dimensions		Weight
Description	d Bore B	k	g
GN 479-B8-16	B8	16	9
GN 479-B8-30	B8	30	24
GN 479-B12-16	B12	16	10
GN 479-B12-30	B12	30	26
GN 479-B18-16	B18	16	13
GN 479-B18-30	B18	30	30
GN 479-B30-30	B30	30	36



STANDARD MACHINE ELEMENTS WORLDWIDE

X-ON Electronics

Largest Supplier of Electrical and Electronic Components

Click to view similar products for [Sensor Fixings & Accessories](#) category:

Click to view products by [Elesa & Ganter](#) manufacturer:

Other Similar products are found below :

[EC18-WELL](#) [FMD411](#) [SA9Z-F11](#) [E4R-R12A-CS3M010](#) [E4R-R12A-CS3M020](#) [BS-1T CHITAN](#) [ICAB-1](#) [SA9Z-S07PN02](#) [ECT18-WELL](#) [57142-000](#) [79450811](#) [734209100](#) [ASI M12 VS](#) [440148](#) [430233](#) [440101](#) [440102](#) [440122](#) [440131](#) [440132](#) [440135](#) [440147](#) [XSZB108](#) [Y92E-BC12](#) [Y92E-BC18](#) [10901](#) [0909](#) [UAC 101](#) [810-12AC/DC](#) [843-12AC/DC](#) [844-12AC/DC](#) [771000-6011](#) [771000-6202](#) [812-12AC/DC](#) [834-12AC/DC](#) [909G](#) [910G](#) [913G](#) [92.031.9058.1](#) [92.032.9058.1](#) [925G](#) [771000-6010](#) [GN 473-B12-MT](#) [GN 474-B12-B12-MT](#) [GN 474-B16-B16-MT](#) [GN 479-B12-30](#) [XSZB118](#) [XSZB112](#) [XSZB130](#) [611-12DC](#) [08 2424 010 000](#) [733877001](#) [ELST-M PG9](#) [1410-12AC/DC](#)