


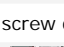








Euromas II, lid with membrane area

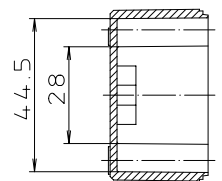
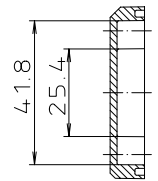
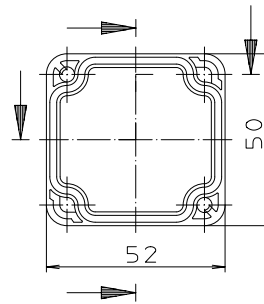
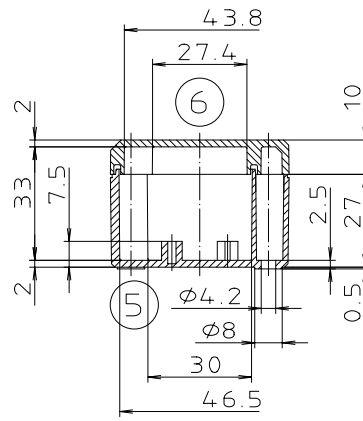
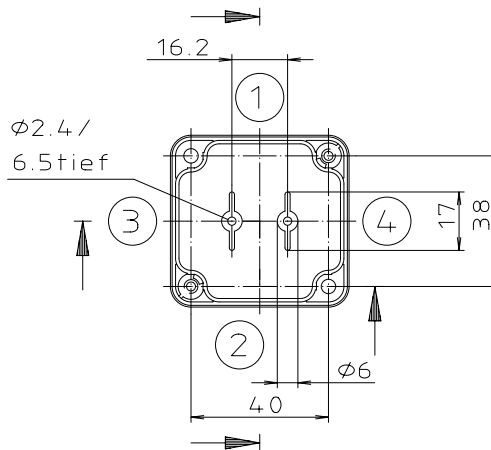
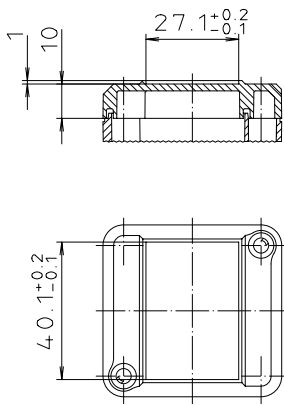
**Product no.:** 63205200  
**Length:** 52  
**Width:** 50  
**Height:** 37  
**Material:** ABS (acrylonitrile-butadiene-styrene)  
**Sealing material:** Neoprene  
**Color:** light grey  
**Ingress protection:** IP 65  
**PDF:**   
**DXF:** 

**Accessories:**

Product no.	Model	Description
22009000	GF	  Rubber feet, Polyurethane, black, 65-75 Shore, 1 set = 4 pcs.
22080000	SA	screw covers (6 pcs), for Euromas II
22010000	EM-WL	  wall bracket set = 4 pcs, for Euromas II
22000100	M	  Mounting plate, for Euromas M/T 205

„Schutzvermerk nach DIN 34 beschriften“

Ausführung EM/ET 205 F



## X-ON Electronics

Largest Supplier of Electrical and Electronic Components

*Click to view similar products for [bopla](#) manufacturer:*

Other Similar products are found below :

[62240000](#) [63233000](#) [82600124](#) [82703124](#) [94242200.MT1](#) [96033125](#) [96036335](#) [ATPH1850-100 MT6](#) [ATPH1850-250 MT1](#) [ATPH1865-250 MT6](#) [94122150.MT2](#) [34501000](#) [34700000](#) [34751000](#) [34910002](#) [ATPH1850-200 MT6](#) [ATPH1865-200 MT6](#) [46400000](#) [46300000](#) [46600000](#) [1124000](#) [1123000](#) [62221000](#) [82200124](#) [82600135](#) [84680100 MT1](#) [02244000](#) [B 080805 ABS GRAPHITE GREY](#) [B 140806 ABS GRAPHITE GREY](#) [ATPH 1850-150](#) [EG1240P](#) [B 140806 ABS LIGHT GREY](#) [B 261706 PC-V0-G GRAPHITE GREY](#) [82200135](#) [T890](#) [02208000](#) [02250000](#) [94122150](#) [41250109](#) [01123000](#) [01104000](#) [92800200](#) [BOP 500 BE4MC-9005](#) [BOP 500 BE4MC-9016](#) [BOP 7.0-9016](#) [BOP 700 BE4MN-9016](#) [BOP 900-9016](#) [BOP 900 BE4MN-9016](#) [ABP 1600-200](#) [96031115](#)