

482.6 mm (19") installation

482.6 mm (19")/metric installation



Captive nuts M5/M6

For the attachment of rack-mounted electronic equipment, 482.6 mm (19") installed equipment and blanking plates to mounting angles, 482.6 mm (19").

For use with metal thickness from 0.8 – 2.0 mm. In areas of narrow tolerance, captive nuts for metal thicknesses of 1.2 – 1.5 mm should be used. Optionally with or without contact of the installed equipment to the 482.6 mm (19") section/enclosure.

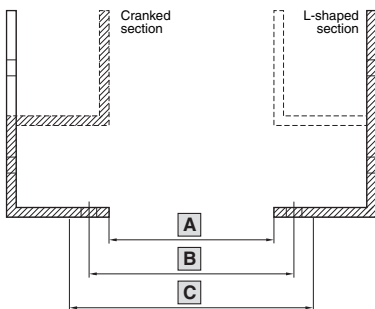
Captive nut M5

Design	For metal thicknesses mm	Packs of	Model No. EL
With contact	0.8 – 2.0	50	2094.500
Without contact	0.8 – 2.0	50	2092.500

Captive nut M6

Design	For metal thicknesses mm	Packs of	Model No. EL
With contact	0.8 – 2.0	50	2094.200
Without contact	0.8 – 2.0	50	2092.200
With contact	1.2 – 1.5	50	2094.300
Without contact	1.2 – 1.5	50	2092.300

Explanation of the fastening dimensions in interior installations



- A** = Clearance width
- B** = Mounting dimension
- C** = External dimension of the rack-mounted equipment or of the front panels

Installation width	A mm	B mm	C mm
19"	450	465	482.6
21"	500	515	533.4
23"	552	567	584.2
24"	577	592	609.6
10"/39 HP	221.4	236	254
1/2 19"/42 HP	236.6	251.2	269.2
9.5"	208.7	223.3	241.3
18 SU	450	465	485
20 SU	500	515	535

X-ON Electronics

Largest Supplier of Electrical and Electronic Components

Click to view similar products for [rittal](#) manufacturer:

Other Similar products are found below :

[3688117](#) [EB1554](#) [KS1434](#) [KS1483](#) [1002.600](#) [1004.600](#) [1037.500](#) [1077.500](#) [1302.600](#) [1578.450](#) [1578.530](#) [1579.450](#) [9516.000](#) [9521.050](#)
[9522.000](#) [1522.010](#) [1523.010](#) [1524.010](#) [1525.010](#) [1526.010](#) [1527.010](#) [1529.010](#) [1530.010](#) [1530.510](#) [1536.510](#) [1538.510](#) [1541.510](#)
[1542.510](#) [1547.500](#) [2383250](#) [2383300](#) [2383350](#) [2384010](#) [2384020](#) [9101.210](#) [9107.210](#) [9108.210](#) [9111.210](#) [9112.210](#) [9113.210](#) [9113700](#)
[9114.210](#) [9116.210](#) [9117.210](#) [9118.210](#) [9119.210](#) [9516.100](#) [9518.000](#) [9519.000](#) [9519.100](#)