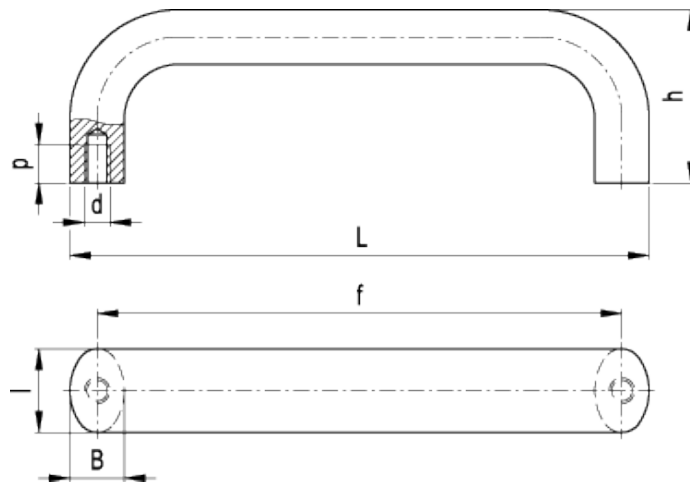


# GN 565

Handles



## technical informations

### Material

Aluminium. Oval cross section bar.

- Version BL: natural aluminium, bright finish.
- Version SW: RAL 9005 black colour, matte finish, epoxy resin coating.
- Version EL: anodised, natural colour, matte finish.
- Version RT: RAL 3000 red colour, epoxy resin coating.

### Assembly

Tapped blind holes.

*Special executions on request (For sufficient quantities)*

Different lengths.

Standard Elements	Main dimensions					Mounting holes		Weight
Description	L	f	h	B	l	d	p	g
GN 565-20-100-*	113	100	49	13	20	M6	10	87
GN 565-20-112-*	125	112	49	13	20	M6	10	97
GN 565-20-117-*	130	117	49	13	20	M8	10	-
GN 565-20-120-*	132	120	49	13	20	M6	10	-
GN 565-20-128-*	141	128	51	13	20	M6	10	107
GN 565-20-160-*	173	160	51	13	20	M6	10	127
GN 565-26-112-*	129	112	55	17	26	M8	12	160
GN 565-26-117-*	134	117	55	17	26	M8	12	166
GN 565-26-120-*	137	120	55	17	26	M8	12	-
GN 565-26-125-*	142	125	55	17	26	M8	12	180
GN 565-26-128-*	145	128	55	17	26	M8	12	183
GN 565-26-160-*	177	160	57	17	26	M8	12	211
GN 565-26-179-*	196	179	57	17	26	M8	12	234
GN 565-26-192-*	209	192	57	17	26	M8	12	245
GN 565-26-300-*	317	300	57	17	26	M8	12	350
GN 565-26-400-*	417	400	57	17	26	M8	12	445
GN 565-26-500-*	517	500	57	17	26	M8	12	538

\* Complete the description of the standard item needed by adding the index of the finish: BL (natural aluminium), SW (black), EL (natural anodised aluminium), RT (red).

This product had the following design awards:



ELESA and GANTER models all rights reserved in accordance with the law. Always mention the source when reproducing our drawings.

STANDARD MACHINE ELEMENTS WORLDWIDE

## X-ON Electronics

Largest Supplier of Electrical and Electronic Components

*Click to view similar products for [Mounting Fixings](#) category:*

*Click to view products by [Elesa & Ganter](#) manufacturer:*

Other Similar products are found below :

[5912235-2](#) [007310](#) [007541](#) [6-141-P](#) [620HA038NF09](#) [620HA038NF11](#) [CTJ420E028-513](#) [M81714/60-12-01](#) [M81714/60-22-01](#) [L/C](#)  
[MA1EAF1200](#) [70-584649-01P](#) [71-074914-006](#) [71-215091-8S](#) [712HA170B23128-N](#) [71-344699-4S](#) [71-441549-19S](#) [71-441864-5S](#) [71-](#)  
[490451-4H](#) [EX-13-3-B-16-325PN](#) [75-69116-8S](#) [75-69211-3P](#) [75-69220-27S](#) [75-69224-5S](#) [75-69614-2S](#) [770-006A109](#) [770-006A109R](#) [770-](#)  
[006A207](#) [770-006A208W1](#) [770-006A209](#) [770-006A306](#) [770-006A703W1](#) [770-006A704](#) [770-006A704W1](#) [770-006A705](#) [770-006A706](#)  
[770-006A706W1](#) [770-006A707](#) [770-006A709](#) [770-007A203](#) [770-007A203W1](#) [770-007A204W1](#) [770-007A207W1](#) [770-007A703](#) [770-](#)  
[007A704W1](#) [770-007A706](#) [770-007A707W1](#) [770-010Y208](#) [770-010Y308](#) [770-010Y705](#) [770-010Y706](#)