

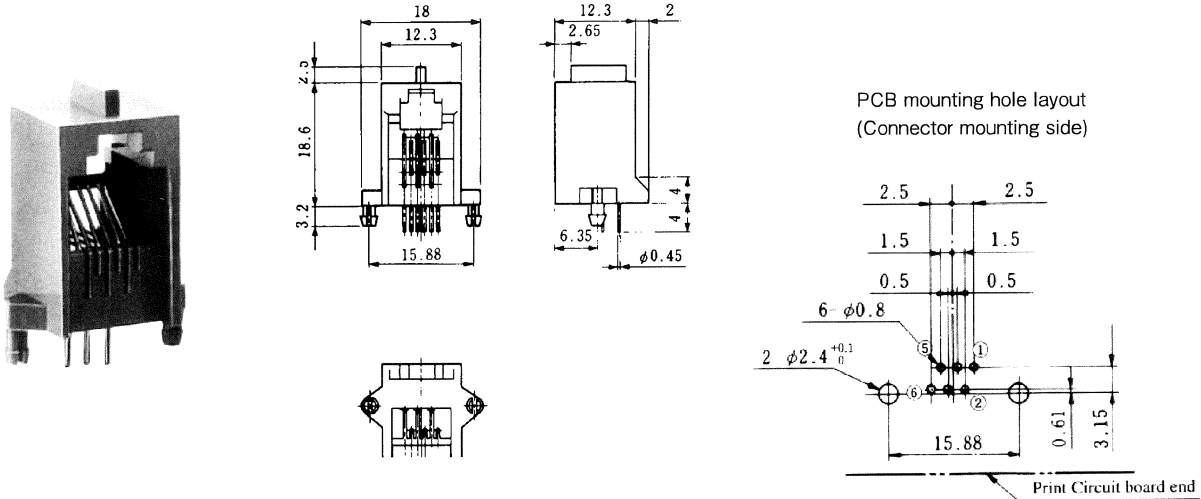
# MODULAR CONNECTORS

CL 222 TM

## Right Angle Dip Type

### ●TM5RC-\*\*(50)

| CL No.        | Part No.      | RoHS |
|---------------|---------------|------|
| 222-0270-9-50 | TM5RC-44 (50) | YES  |
| 222-0338-0-50 | TM5RC-64 (50) |      |
| 222-0337-8-50 | TM5RC-66 (50) |      |

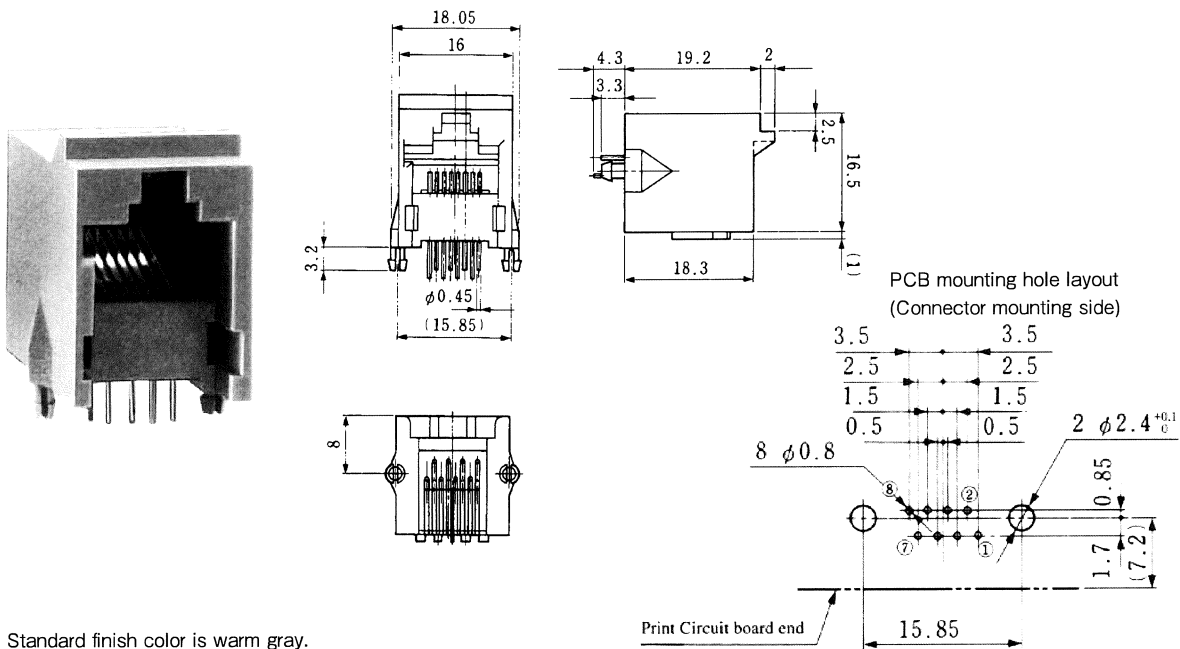


Note 1: Standard finish color is gray.

Note 2: The drawing is shown sample of TM5RC-66(50).

### ●TM5RC-88(50)

| CL No.        | Part No.      | RoHS |
|---------------|---------------|------|
| 222-0339-3-50 | TM5RC-88 (50) | YES  |



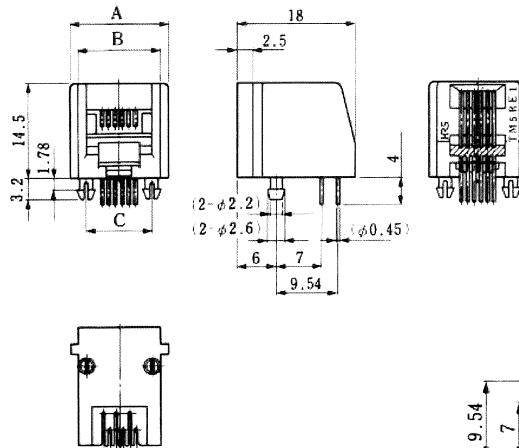
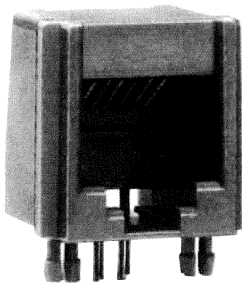
Note : Standard finish color is warm gray.

# MODULAR CONNECTORS

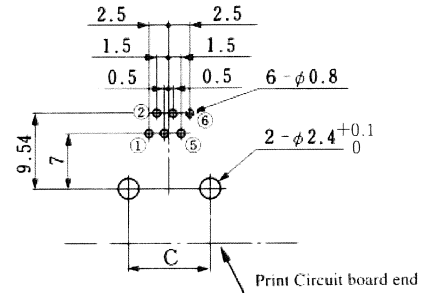
## CL 222 TM

### ●TM5RE1- \*\* (20)

| CL No.        | Part No.       | A  | B    | C  | RoHS |
|---------------|----------------|----|------|----|------|
| 222-0538-0-20 | TM5RE1-44 (20) | 13 | 10.4 | 8  | YES  |
| 222-0539-2-20 | TM5RE1-62 (20) | 15 | 12.4 | 10 |      |
| 222-0540-1-20 | TM5RE1-64 (20) | 15 | 12.4 | 10 |      |
| 222-0541-4-20 | TM5RE1-66 (20) | 15 | 12.4 | 10 |      |



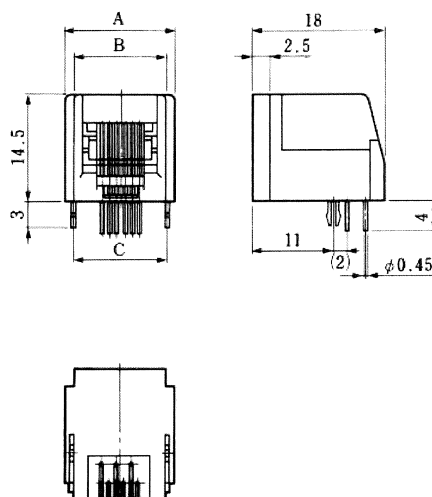
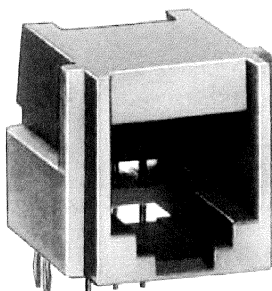
PCB mounting hole layout  
(Connector mounting side)



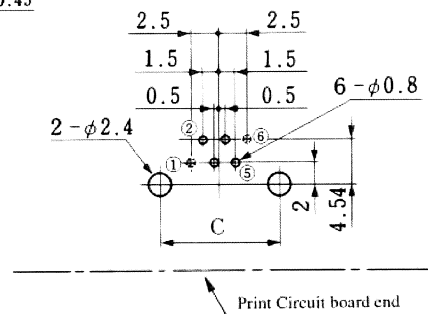
Note 1: Standard finish color is dark gray.  
 Note 2: The drawing is shown sample of TM5RE1-66 (20).

### ●TM5RE2- \*\* (20)

| CL No.        | Part No.       | A  | B    | C    | RoHS |
|---------------|----------------|----|------|------|------|
| 222-1222-1-20 | TM5RE2-44 (20) | 13 | 10.4 | 10.8 | YES  |
| 222-1224-7-20 | TM5RE2-62 (20) | 15 | 12.4 | 12.8 |      |
| 222-1223-4-20 | TM5RE2-64 (20) | 15 | 12.4 | 12.8 |      |
| 222-1225-0-20 | TM5RE2-66 (20) | 15 | 12.4 | 12.8 |      |



PCB mounting hole layout  
(Connector mounting side)



Note 1: Standard finish color is dark gray.  
 Note 3: The drawing is shown sample of TM5RE2-66 (20).

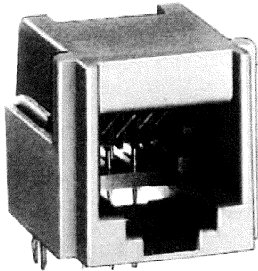
The product information in this catalog is for reference only. Please request the Engineering Drawing for the most current and accurate design information.  
 All non-RoHS products have been discontinued, or will be discontinued soon. Please check the products status on the Hirose website RoHS search at [www.hirose-connectors.com](http://www.hirose-connectors.com), or contact your Hirose sales representative.

# MODULAR CONNECTORS

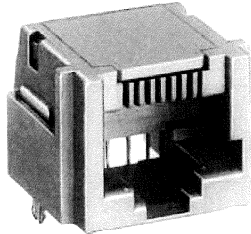
## CL 222 TM

### ● TM5RE3-\*(20)

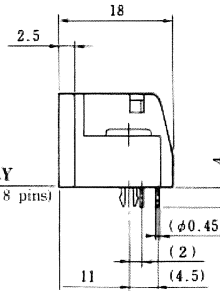
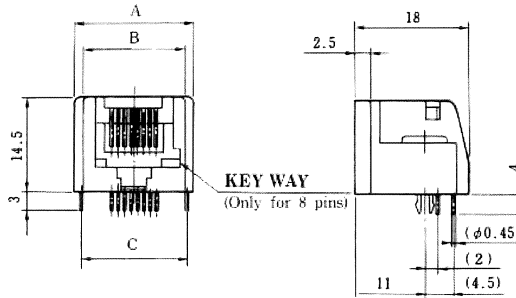
| CL No.        | Part No.       | A    | B    | C    | RoHS |
|---------------|----------------|------|------|------|------|
| 222-1406-4-20 | TM5RE3-44 (20) | 13   | 10.4 | 10.8 | YES  |
| 222-1407-7-20 | TM5RE3-62 (20) | 15   | 12.4 | 12.8 |      |
| 222-1427-4-20 | TM5RE3-64 (20) | 15   | 12.4 | 12.8 |      |
| 222-1428-7-20 | TM5RE3-66 (20) | 15   | 12.4 | 12.8 |      |
| 222-1702-7-20 | TM5RE3-88 (20) | 18.6 | 16   | 16.4 |      |



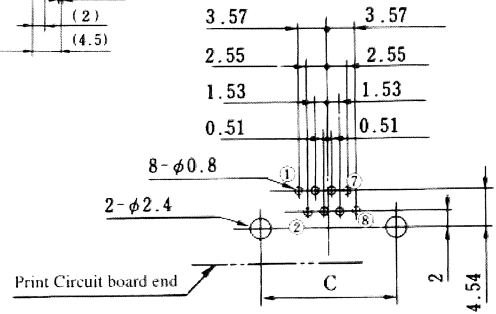
TM5RE3-66 (20)



TM5RE3-88 (20)



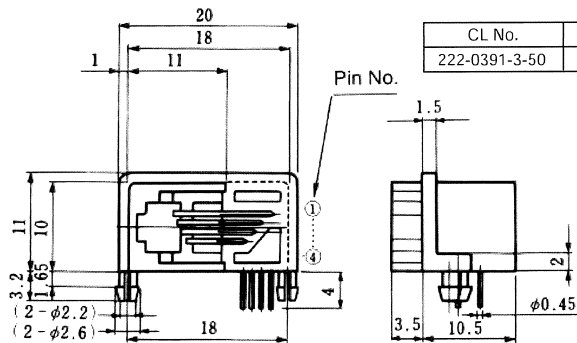
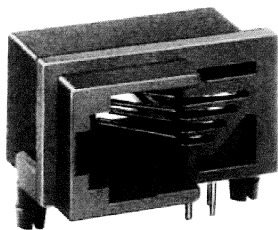
PCB mounting hole layout  
(Connector mounting side)



Note 1: Standard finish color is dark gray.

Note 2: The drawing is shown sample of TM5RE3-88 (20).

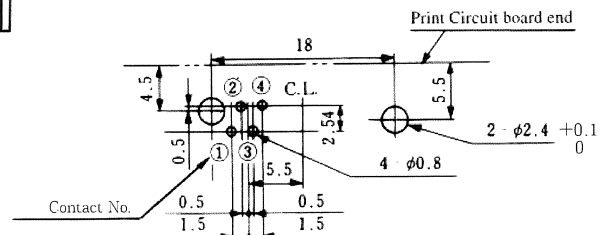
### ● TM5RF-44 (50)



| CL No.        | Part No.      | RoHS |
|---------------|---------------|------|
| 222-0391-3-50 | TM5RF-44 (50) | YES  |

PCB mounting hole layout  
(Connector mounting side)

C.L. : Center Line



Note 1: Standard finish color is gray.

Note 2: Backboard size is shown the connector mounting side of PCB.

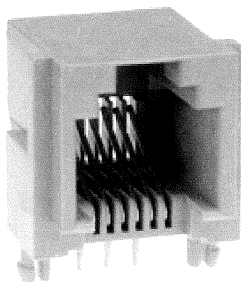


# MODULAR CONNECTORS

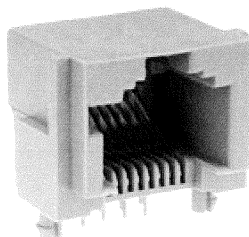
CL 222 TM

## ●TM5RJ2- \*(50)

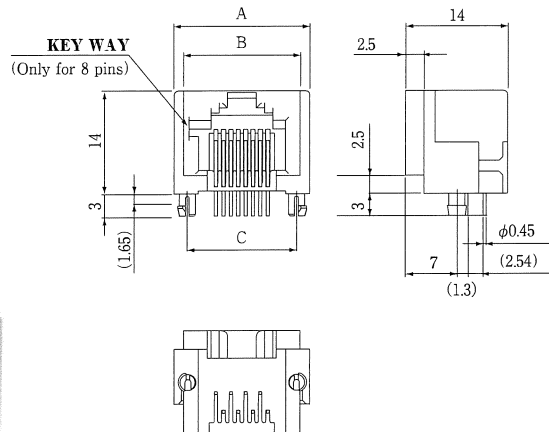
| CL No.        | Part No.       | A    | B    | C  | RoHS |
|---------------|----------------|------|------|----|------|
| 222-1459-0-50 | TM5RJ2-44 (50) | 12.8 | 10.2 | 10 | YES  |
| 222-1486-3-50 | TM5RJ2-62 (50) | 14.8 | 12.2 | 12 |      |
| 222-1460-0-50 | TM5RJ2-64 (50) | 14.8 | 12.2 | 12 |      |
| 222-1461-2-50 | TM5RJ2-66 (50) | 14.8 | 12.2 | 12 |      |
| 222-1462-5-50 | TM5RJ2-88 (50) | 18.6 | 16   | 15 |      |



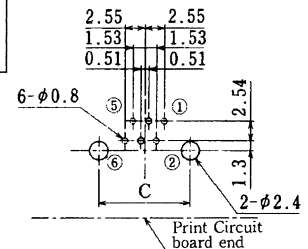
TM5RJ2-66(50)



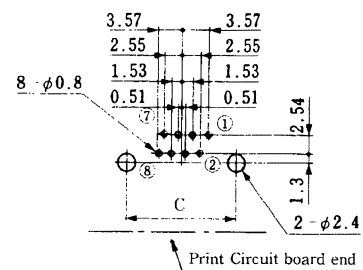
TM5RJ2-88(50)



PCB mounting hole layout  
(Connector mounting side)



TM5RJ2-44,6\*



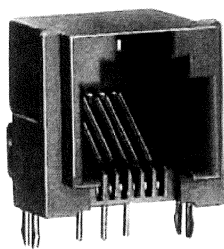
TM5RJ2-88(50)

Note 1: Standard finish color is gray.

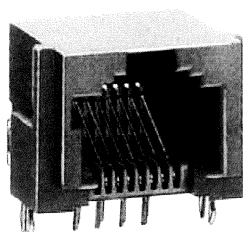
Note 2: The drawing is shown sample of TM5RJ2-88(50).

## ●TM5RJ3- \*(50)

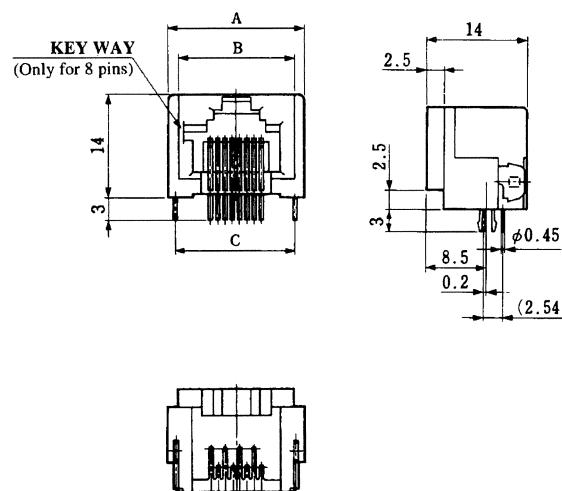
| CL No.        | Part No.       | A    | B    | C     | RoHS |
|---------------|----------------|------|------|-------|------|
| 222-1363-3-50 | TM5RJ3-44 (50) | 12.8 | 10.2 | 10.76 | YES  |
| 222-1487-6-50 | TM5RJ3-62 (50) | 14.8 | 12.2 | 12.8  |      |
| 222-1463-8-50 | TM5RJ3-64 (50) | 14.8 | 12.2 | 12.8  |      |
| 222-1464-0-50 | TM5RJ3-66 (50) | 14.8 | 12.2 | 12.8  |      |
| 222-1465-3-50 | TM5RJ3-88 (50) | 18.6 | 16   | 16.6  |      |



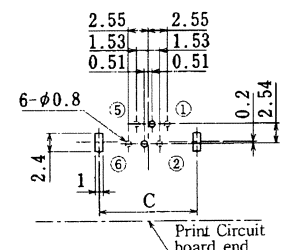
TM5RJ3-66(50)



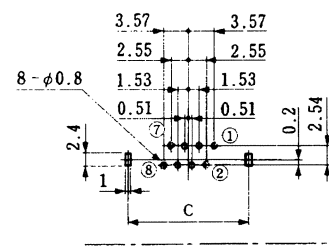
TM5RJ3-88(50)



PCB mounting hole layout  
(Connector mounting side)



TM5RJ3-44, 6\*



TM5RJ3-88(50)

Note 1: Standard finish color is gray.

Note 2: The drawing is shown sample of TM5RJ3-88(50).



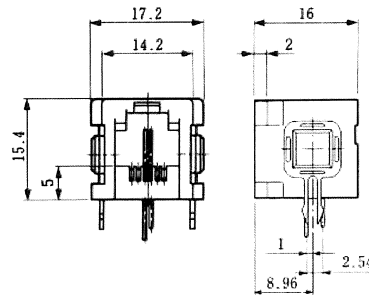
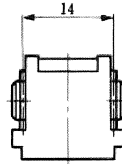
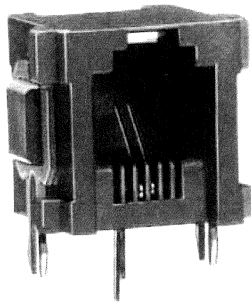
# MODULAR CONNECTORS

CL 222 TM

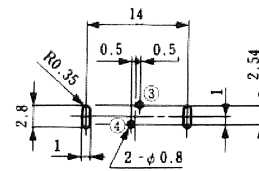
## Gang-Jacks Right Angle Dip Type

### ●TM2REA-06 \*\* (50)

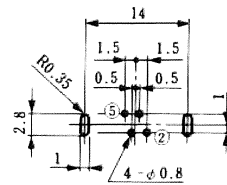
| CL No.        | Part No.         | RoHS |
|---------------|------------------|------|
| 222-1277-3-50 | TM2REA-0602 (50) | YES  |
| 222-1466-6-50 | TM2REA-0604 (50) |      |
| 222-1467-9-50 | TM2REA-0606 (50) |      |



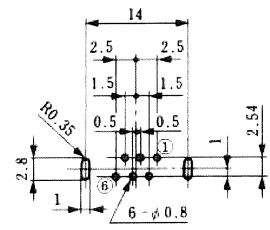
PCB mounting hole layout  
(Connector mounting side)



TM2REA-0602 (50)



TM2REA-0604 (50)



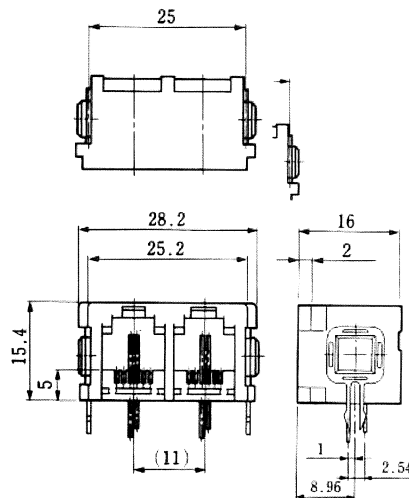
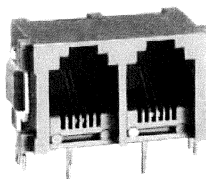
TM2REA-0606 (50)

Note 1: Standard finish color is gray.

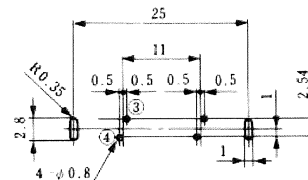
Note 2: The drawing is shown sample of TM2REA-0602 (50).

### ●TM2REA-12 \*\* (50)

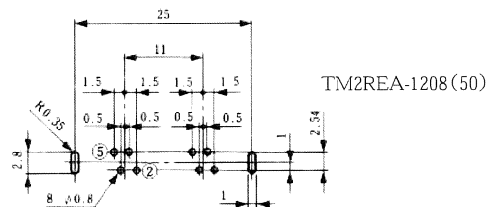
| CL No.        | Part No.         | RoHS |
|---------------|------------------|------|
| 222-0802-6-50 | TM2REA-1204 (50) | YES  |
| 222-0799-3-50 | TM2REA-1208 (50) |      |
| 222-0681-3-50 | TM2REA-1212 (50) |      |



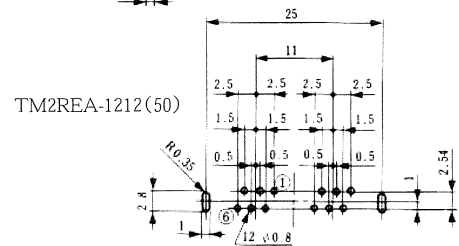
PCB mounting hole layout  
(Connector mounting side)



TM2REA-1204 (50)



TM2REA-1208 (50)



TM2REA-1212 (50)

Note 1: Standard finish color is gray.

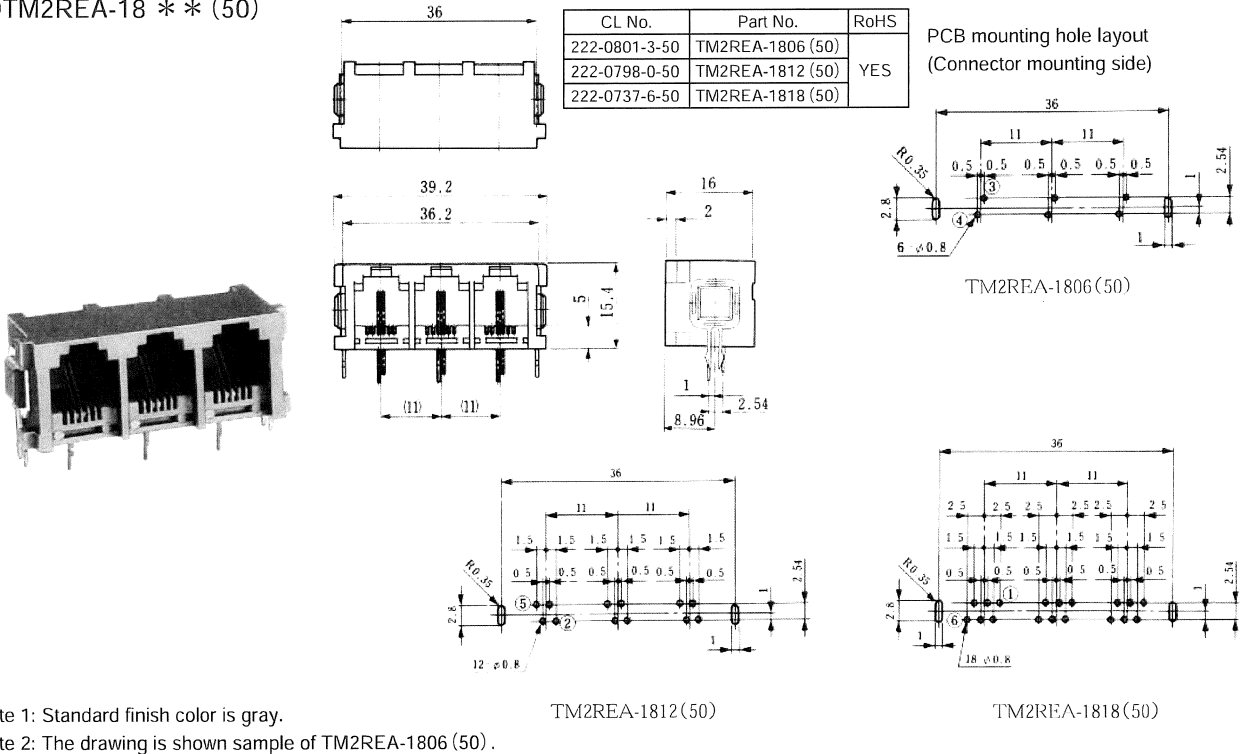
Note 2: The drawing is shown sample of TM2REA-1204 (50).

The product information in this catalog is for reference only. Please request the Engineering Drawing for the most current and accurate design information.  
 All non-RoHS products have been discontinued, or will be discontinued soon. Please check the products status on the Hirose website RoHS search at [www.hirose-connectors.com](http://www.hirose-connectors.com), or contact your Hirose sales representative.

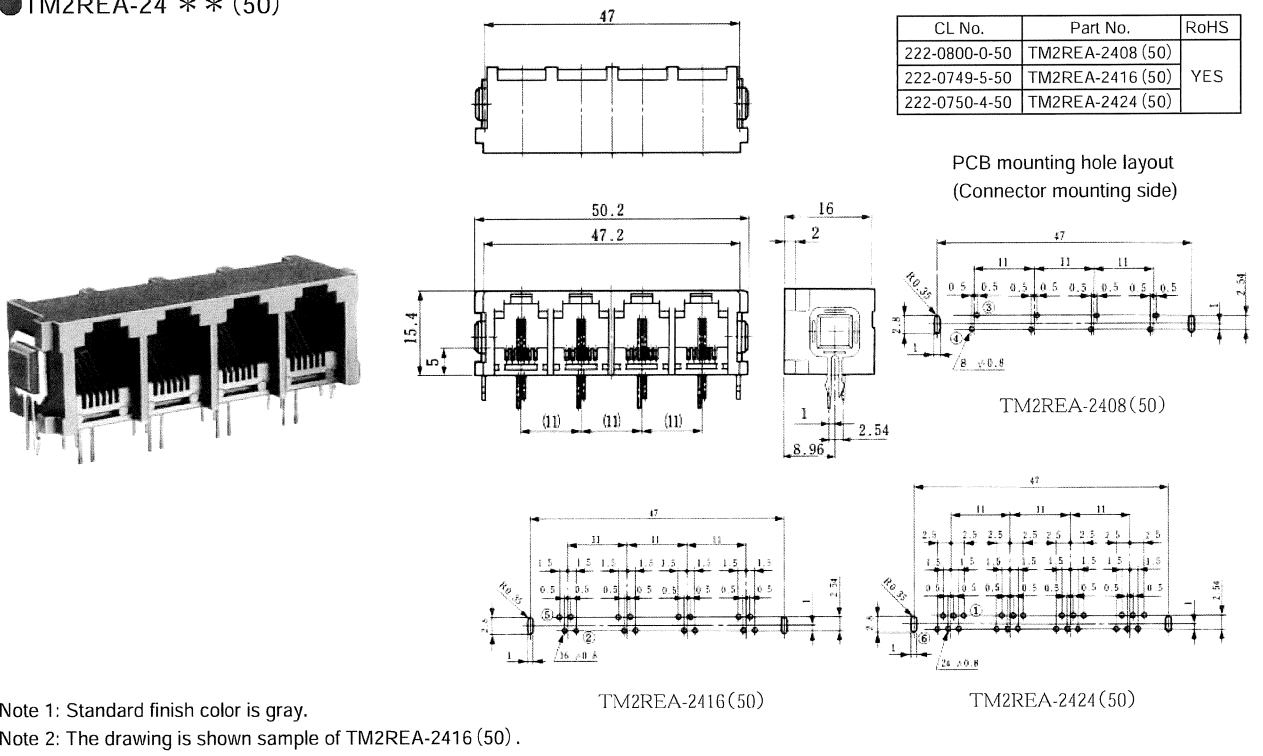
# MODULAR CONNECTORS

## CL 222 TM

### ●TM2REA-18 \*\* (50)



### ●TM2REA-24 \*\* (50)

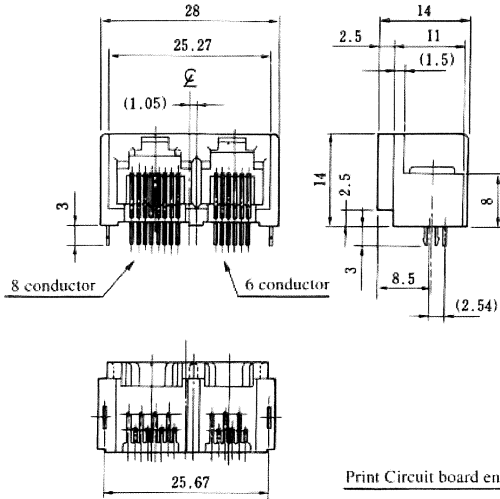
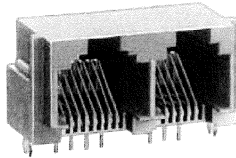




# MODULAR CONNECTORS

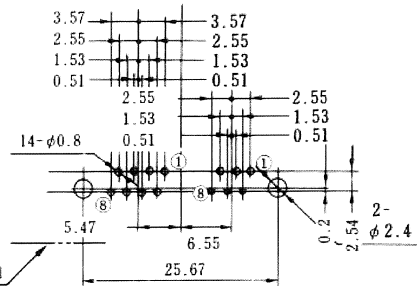
## CL 222 TM

### ● TM5RQ-1414 (50)



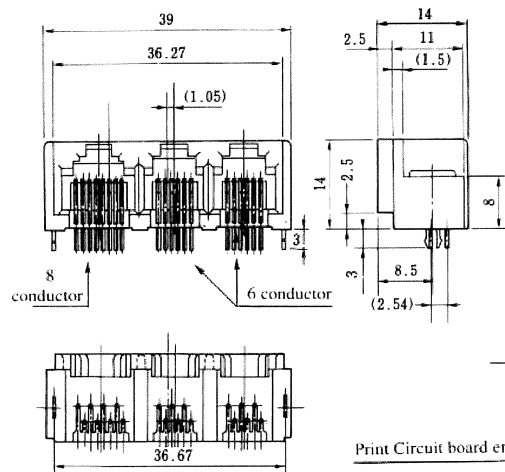
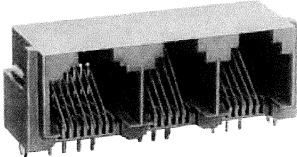
| CL No.        | Part No.        | RoHS |
|---------------|-----------------|------|
| 222-1504-3-50 | TM5RQ-1414 (50) | YES  |

PCB mounting hole layout  
(Connector mounting side)



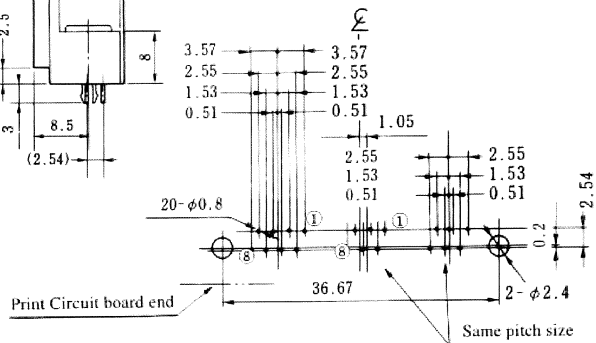
Note : Standard finish color is gray.

### ● TM5RQ-2020 (50)



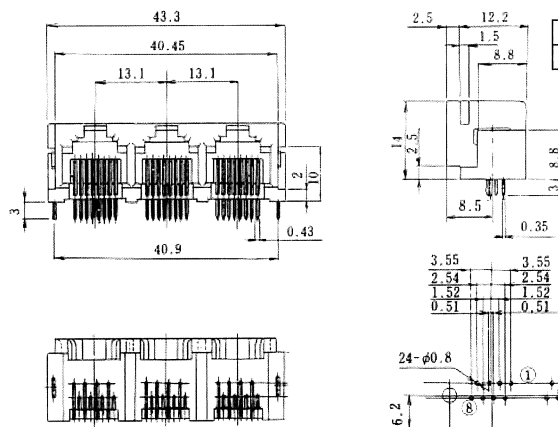
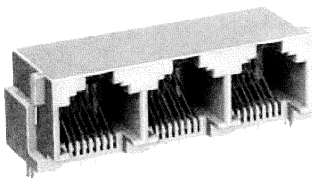
| CL No.        | Part No.        | RoHS |
|---------------|-----------------|------|
| 222-1645-5-50 | TM5RQ-2020 (50) | YES  |

PCB mounting hole layout  
(Connector mounting side)



Note : Standard finish color is gray.

### ● TM5RSA-2424 (50)



| CL No.        | Part No.         | RoHS |
|---------------|------------------|------|
| 222-3264-2-50 | TM5RSA-2424 (50) | YES  |

PCB mounting hole layout (Connector mounting side)

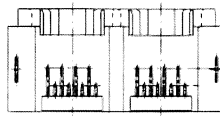
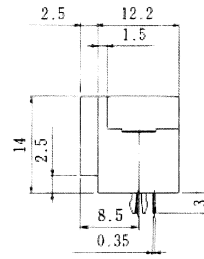
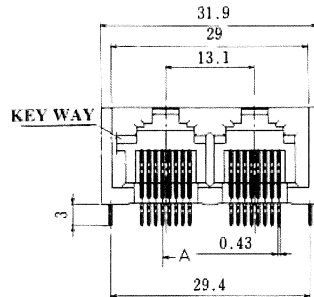
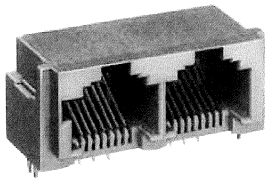
Note : Standard finish color is gray.

The product information in this catalog is for reference only. Please request the Engineering Drawing for the most current and accurate design information.  
 All non-RoHS products have been discontinued, or will be discontinued soon. Please check the products status on the Hirose website RoHS search at [www.hirose-connectors.com](http://www.hirose-connectors.com), or contact your Hirose sales representative.

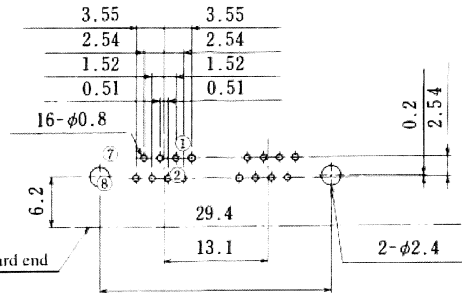
# MODULAR CONNECTORS

CL 222 TM

● TM5RSB-1616 (50)



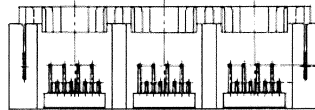
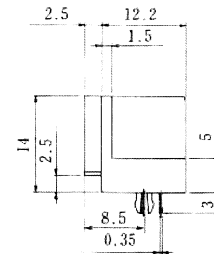
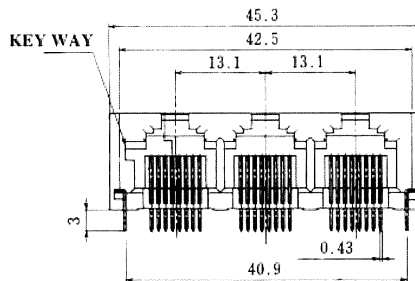
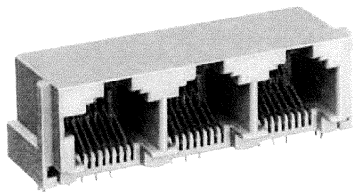
PCB mounting hole layout  
(Connector mounting side)



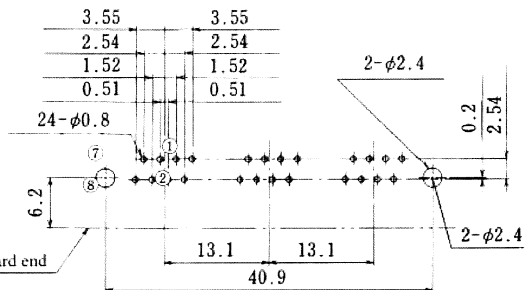
| CL No.        | Part No.         | RoHS |
|---------------|------------------|------|
| 222-3712-1-50 | TM5RSB-1616 (50) | YES  |

Note : Standard finish color is gray.

● TM5RSB-2424 (50)



PCB mounting hole layout  
(Connector mounting side)



| CL No.        | Part No.         | RoHS |
|---------------|------------------|------|
| 222-3423-4-50 | TM5RSB-2424 (50) | YES  |

Note : Standard finish color is gray.



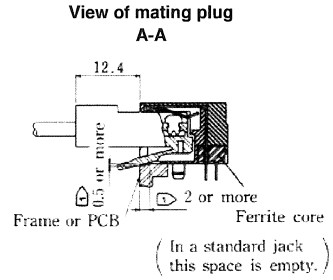
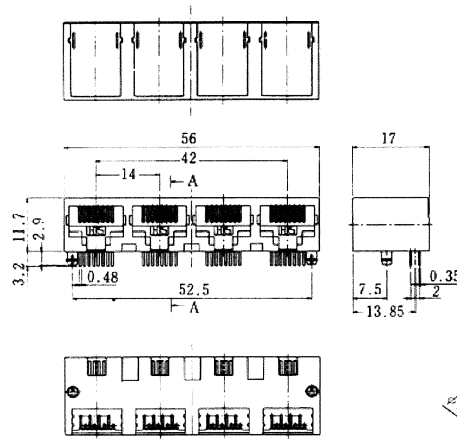
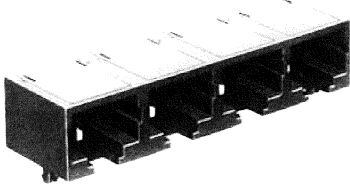
# MODULAR CONNECTORS

CL 222 TM

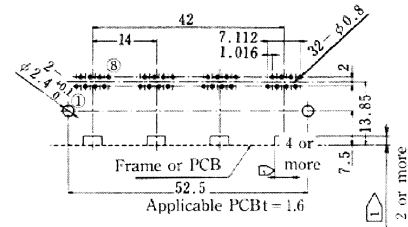
## Quadruplet right-angle dip

●TM5RL \*-3232 (50)

| CL No.        | Part No.         | Type              | RoHS |
|---------------|------------------|-------------------|------|
| 222-2671-0-50 | TM5RL-3232 (50)  | Standard          | YES  |
| 222-2711-3-50 | TM5RLF-3232 (50) | With ferrite core | YES  |



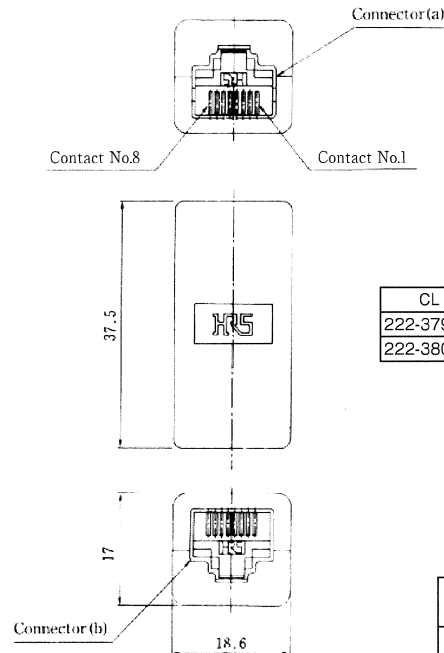
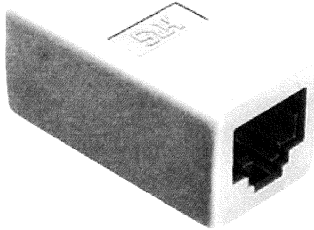
**Mounting dimensions for reference  
(PCB mounting side)**



Note : When preparing frames or PCBs, provide the above  $\nabla$  for the connector.

## Eight-conductor extension adapter

●TM5RL \*-88-JJ (50)



| CL No.        | Part No.          | Type              | RoHS |
|---------------|-------------------|-------------------|------|
| 222-3798-7-50 | TM5RL-88-JJ (50)  | Standard          | YES  |
| 222-3805-0-50 | TM5RLF-88-JJ (50) | With ferrite core | YES  |

Terminal numbers

|                                       |   |   |   |   |   |   |   |   |
|---------------------------------------|---|---|---|---|---|---|---|---|
| Connector(a) terminal No.<br>TM5RL-88 | 1 | 2 | 3 | 4 | 5 | 6 | 7 | 8 |
| Connector(b) terminal No.<br>TM5RL-88 | 1 | 2 | 3 | 4 | 5 | 6 | 7 | 8 |

## X-ON Electronics

Largest Supplier of Electrical and Electronic Components

*Click to view similar products for [Modular Connectors](#) / [Ethernet Connectors](#) category:*

*Click to view products by [Hirose](#) manufacturer:*

Other Similar products are found below :

[RJE231881317T](#) [MP1010RX-1000](#) [MP44RX-1000](#) [GAX-3-66](#) [GAX-8-62](#) [93606-0253](#) [GD-A-44](#) [GDCX-PA-66-50](#) [GDCX-PN-64](#) [GDCX-PN-66](#) [GDCX-PN-66-50](#) [GDLX-A-66](#) [GDLX-A-88](#) [GDLX-N-66](#) [GDLX-S-88K](#) [GDTX-S-88-50](#) [GDX-PA-1010](#) [GLX-N-1010M-BLK](#) [GLX-N-44M](#) [GLX-S-88M-BLK](#) [GMX-N-1010](#) [GMX-S-1010](#) [GMX-S-66](#) [GMX-SMT2-N-1010](#) [GMX-SMT2-N-64-50](#) [GMX-SMT2-S6-88](#) [GMX-SMT4-N-88](#) [GPX-2-64](#) [GRT1-BT1-5](#) [GSGX-N-2-88](#) [GSX-NS2-88-3.05](#) [GSX-NS2-88-3.05-50](#) [GSX-NS-88-3.05-30](#) [GSX-NS-88-3.05-50](#) [GSX-NS-88-3.68](#) [1-1775629-2](#) [GWLX-S-88-GR](#) [GWLX-S9-88-YG](#) [1300500326](#) [1300500227](#) [1300530003](#) [1300570002](#) [1324640-4](#) [RJ11FTVC2G](#) [RJ11FTVC2N](#) [RJFTVX2SA1G](#) [132764-001](#) [1400000](#) [1413176](#) [1413235](#)