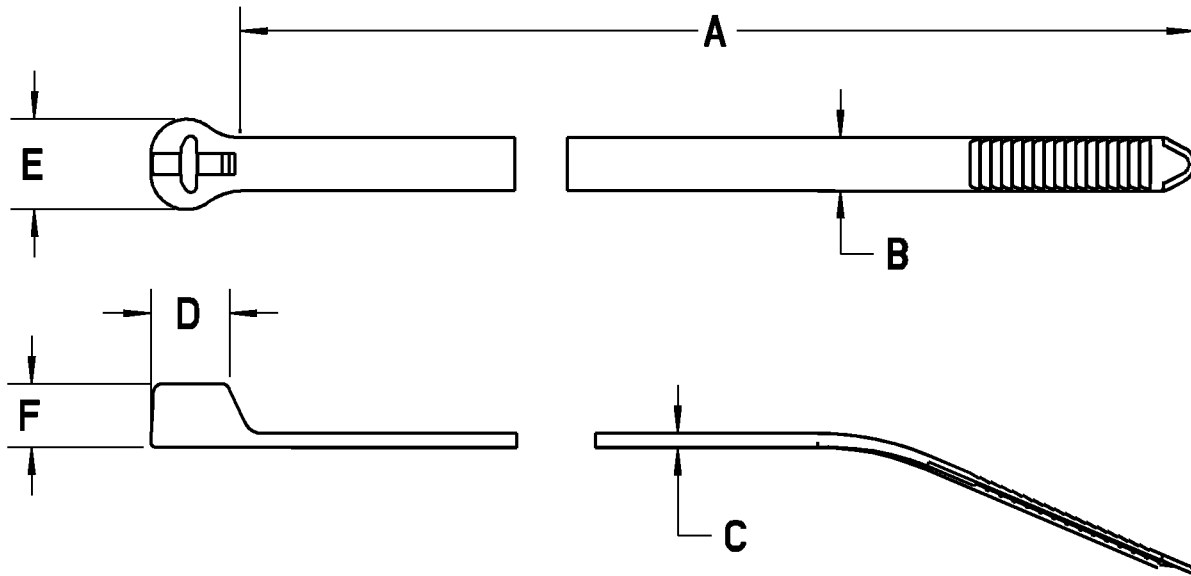


TYPE 1



NOTES:

1. MATERIAL: NYLON 4/6 HEAT STABILIZED.
2. COLOR: NATURAL (OLIVE)
3. TYPE I OPERATING TEMPERATURE RANGE: -40°F/-40°C TO 302°F/150°C
TYPE II OPERATING TEMPERATURE RANGE: -40°F/-40°C TO 266°F/130°C
4. FLAMMABILITY: UL94 V-2
5. MINIMUM INSTALLATION TEMPERATURE: 0°F/-18°C
6. COMPLIES WITH IEC 62275, EN62275 AND NMX-J-623-ANCE, TYPE I

CAT. NO.	A	B	C	D	E	F	MIN TENSILE RATING LBS/[N]	MIN WIRE BUNDLE	MAX. WIRE BUNDLE	PKG QTY	TOOL/SETTING
TYHT23M	3.62 [91.9]	.092 [2.34]	.036 [0.91]	.130 [3.30]	.185 [4.70]	.153 [3.88]	18/80	.062 [1.57]	.787 [20.0]	1,000	ERG50/1-3 OR WT199/1-3 (MS90387-1)
TYHT24M	5.5 [139.7]	.140 [3.55]	.045 [1.14]	.156 [3.96]	.250 [6.35]	.180 [4.57]	40/178	.062 [1.57]	1.14 [29.0]	1,000	ERG50/3-5 OR WT199/3-5 (MS90387-1)
TYHT25M	7.31 [186]	.188 [4.77]	.048 [1.22]	.250 [6.35]	.315 [8.00]	.220 [5.89]	50/222	.187 [4.75]	1.77 [45.0]	1,000	ERG50/6-8 OR WT199/6-8 (MS90387-1)
TYHT27M	13.4 [340]	.270 [6.86]	.063 [1.60]	.360 [9.14]	.480 [12.2]	.320 [8.13]	120/534	.187 [4.75]	3.50 [89.0]	500	ERG120/5-8 OR WT197/5-8 (MS90387-2)
TYHT28M	14.2 [361]	.187 [4.75]	.050 [1.27]	.250 [6.35]	.315 [8.00]	.220 [5.89]	50/222	.187 [4.75]	4.00 [102.0]	1,000	ERG50/6-8 OR WT199/6-8 (MS90387-1)

GENERAL NOTES

1. ALL DIMENSIONS ARE FOR REFERENCE ONLY.
2. DIMENSIONS IN BRACKETS [] ARE IN METRIC UNITS.

REVISIONS

- | | |
|---|---|
| 6 | SEE ERN 2013330 FOR APPROVAL SIGNATURES & RELEASE DATE.
PROJECT NO: FM401183 |
|---|---|

Thomas & Betts
www.tnb.com

DESCRIPTION: **TYHT SERIES EXTRA HIGH TEMP
TY-RAP CABLE TIES**

ORIGINAL PROJECT NO / (ERN NO)	SHEET NO:	REV. NO:	DRAWING NO:
FM401181 / (2005322)	1 OF 1	6	WSD-000156

X-ON Electronics

Largest Supplier of Electrical and Electronic Components

Click to view similar products for [Wire Identification category](#):

Click to view products by [ABB manufacturer](#):

Other Similar products are found below :

[CU6337-000](#) [CU6342-000](#) [FCA-410-12](#) [11631010](#) [1-1768037-1](#) [1-1768037-2](#) [1-1768050-0](#) [PXLK-VI](#) [Q62184-1](#) [A64304-000](#) [QMT221](#)
[HK032WE1NF038B](#) [1330-0519-10](#) [1395199-1](#) [1395200-1](#) [1395202-1](#) [DMVF050WE-300S6](#) [D-SCE-1K-2.4-50-4-CS7834](#) [1538738-1](#)
[E90935-000](#) [EC1238-000](#) [EC1465-000](#) [EC1855-000](#) [EC1859-000](#) [EC1863-000](#) [EC5415-000](#) [EC7277-000](#) [EC7352-000](#) [EC7603-000](#)
[EC7707-000](#) [EC7735-000](#) [EC7768-000](#) [EC7828-000](#) [EC7854-000](#) [EC7952-000](#) [EC8128-000](#) [1768037-8](#) [1768041-7](#) [NC-127191-10-9](#)
[HS048WE2NF038B](#) [C03232-000](#) [HTCM-SCE-14-4H-9](#) [HTMS-3/16-9](#) [HT-SCE-1/4-2.0-4](#) [HT-SCE-3/16-2.0-4](#) [HTTMS-1/2-1.50-9](#) [HTTMS-](#)
[CM-1/2-4H-9](#) [HX-SCE-19.0-50-9](#) [HX-SCE-6.4-50-4](#) [C25254-000](#)