

5

4

3

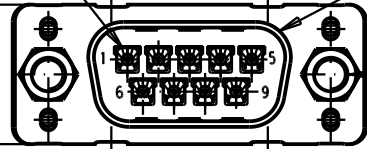
2

1

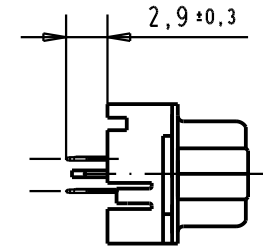
Mating face according to : MIL-C-24308 / DIN 41652 / CECC 75301-802

No. 1 contact

12,5 max.



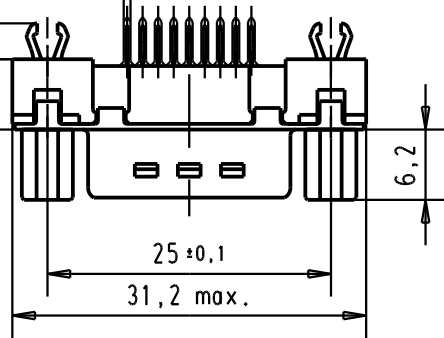
screw lock thread



6,2

3,2 max.

0,6



25 ± 0,1

31,2 max.

Printed board layout component side

4x2,74=10,96

3x2,74=8,22

2,74

No.1 contact

2,84

1,42

No.6 contact

2,74

25

No.9 contact

∅3,1 ± 0,1

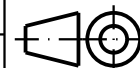
∅0.1

∅1 ± 0,1 ∅0.05

Connector retention and insertion forces on the PCB = 25 / 80 newtons

09 65 169 3733	M3	1				
09 65 169 6733	M3	2				
09 65 169 7733	M3	3				
09 65 169 3713	4-40 UNC	1				
09 65 169 6713	4-40 UNC	2	31892	22/04/04	JH	
09 65 169 7713	4-40 UNC	3	31084	04/SEP/02	YT	
Part number	Screw lock thread	Performance level	Mod.	Dat.	Name	

	Dat.	Name
Detail.	04/SEP/02	YT
Insp.		
Stand.		
HARTING EURL F-95972 Paris		



All Dim. in mm
Orig. Size DIN A 4



D-Sub, High temperature, 9 poles, male, straight with solder pins 2.9, screw lock and grounding board lock.

TB 09 65 169 x7x3

Sub.

Maßstab/
Scale

1,5:1

Blatt/ Page

1

X-ON Electronics

Largest Supplier of Electrical and Electronic Components

Click to view similar products for [D-Sub Micro-D Connectors](#) category:

Click to view products by [HARTING](#) manufacturer:

Other Similar products are found below :

[M243082311F](#) [M2430834F](#) [M24308/4-6F](#) [65-1920-15](#) [M83513/01-HN](#) [M83513/03-A10N](#) [M83513/03-B14C](#) [M83513/03-D09C](#) [M83513/03-D11N](#) [M83513/03-G02N](#) [M83513/03-G05N](#) [M83513/03-G08C](#) [M83513/03-G09N](#) [M83513/03-G12N](#) [M83513/03-H13N](#) [M83513/04-E15N](#) [M83513/04-G04C](#) [M83513/10-E01NP](#) [M83513/13-B01NP](#) [M83513/13-C01NN](#) [M83513/16-A01CP](#) [M83513/22-D01NP](#) [M83513/25-B01NP](#) [6R2004A30F015](#) [6R4006A28A120](#) [703006A13F060](#) [704002A03F200](#) [705001A13F120](#) [7-1532020-5](#) [748567-1-P](#) [MDB1-31SH003](#) [MDM-15PBS-L58](#) [MDM-15PCBRM7T](#) [MDM-15PH003B-A174](#) [75-068624-59S](#) [MDM-15PH034B](#) [MDM-15SH001L](#) [MDM-15SH004B](#) [MDM-21PH003K](#) [MDM-25PH003B-A174](#) [MDM-25PHW01F-A174](#) [MDM-37PH006L-A174](#) [MDM-37PH048M5-A174](#) [MDM-37SCBRP-A174](#) [MDM-51PBS-L56](#) [MDM-51PSF](#) [MDM-51SH003M7](#) [MDM-51SSM7-A174](#) [MDM-9PBSP-L58](#) [MDM-9PH003M7](#)