

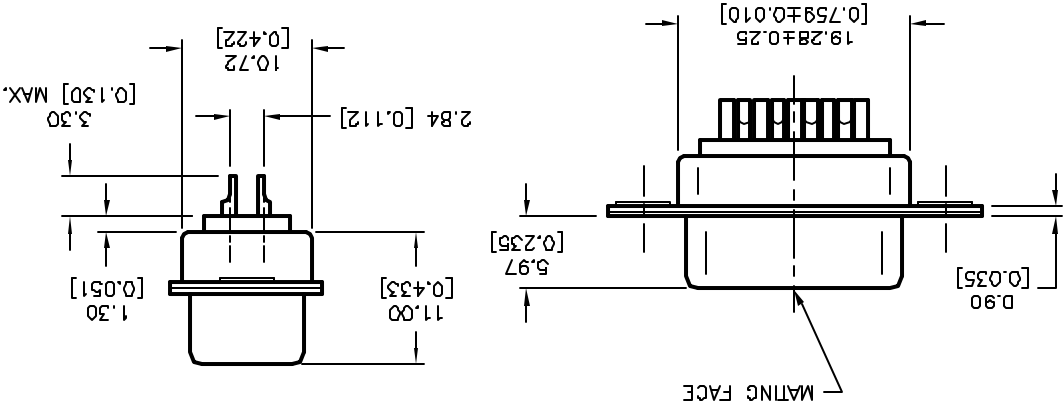
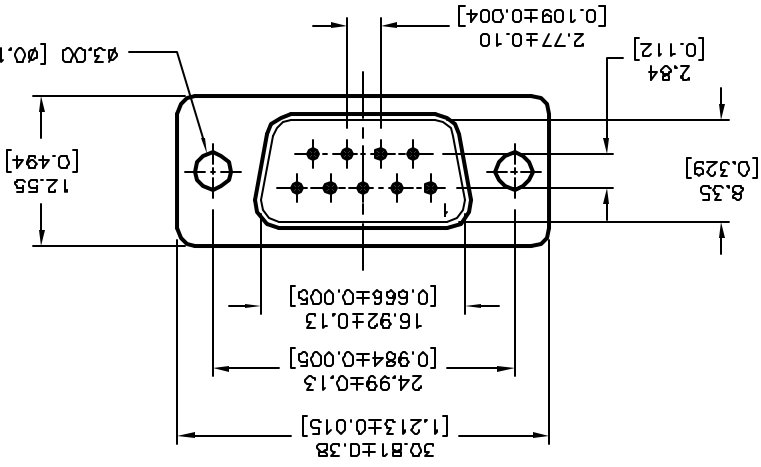
ALL RIGHTS RESERVED. NO PORTION OF THIS PUBLICATION, WHETHER IN WHOLE OR IN PART, CAN BE REPRODUCED WITHOUT THE EXPRESS WRITTEN CONSENT OF SPC TECHNOLOGY.

SPC-FD05.DWG

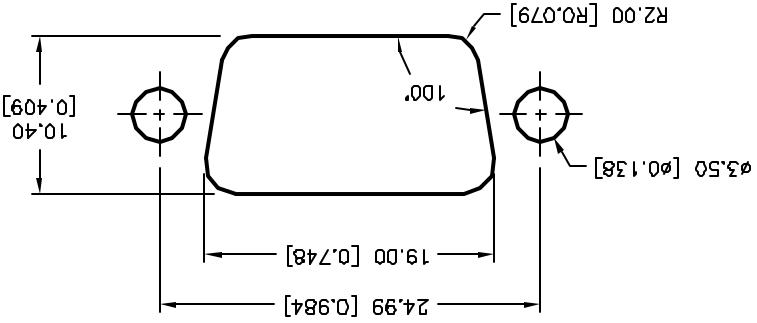
REVISIONS

DCP #	REV	DESCRIPTION	DRAWN	DATE	CHECKD	DATE	APPRVD	DATE
1876	A	RELEASED	EO	07/25/06	JN	2/13/06	JN	2/13/06
1959	B	Shell Plate was Zinc	JN	2/13/06	JN	2/13/06	JN	2/13/06

DOC. NO. SPC-FD05 + Effective 7/8/02 + DCP No. 1398



PANEL CUTOUT



- SPECIFICATIONS:**
1. Shell: Steel, Tin-Plate
 2. Contact: Brass, Stamped Gold 5µ Min.- Plated over Nickel
 3. Insulator: PBT & Fiber-Glass Reinforced, Blue Color
 4. Current Rating: 5 Amps
 5. Dielectric Strength: 1000 V for One Minute
 6. Insulator Resistance: 1000 Megohms Min. at 500 VDC
 7. Temperature: -50°C ~ +105°C

TOLERANCES:

Unless Otherwise Specified

.X ±0.2 [0.008]

.XX ±0.12 [0.005]

DISCLAIMER:
ALL STATEMENTS AND TECHNICAL INFORMATION CONTAINED HEREIN ARE BASED UPON INFORMATION AND/OR TESTS WE BELIEVE TO BE ACCURATE AND RELIABLE. SINCE CONDITIONS OF USE ARE BEYOND OUR CONTROL, THE USER SHALL DETERMINE THE SUITABILITY OF THE PRODUCT FOR THE INTENDED USE AND ASSUME ALL RISK AND LIABILITY WHATSOEVER IN CONNECTION THEREWITH.

DATE:	07/25/06	DATE:	2/13/08
DRAWN BY:	EKLAS ODISH	CHECKED BY:	Jason Nash
DATE:	07/25/06	DATE:	2/13/08
DRAWN BY:	EKLAS ODISH	APPROVED BY:	Jason Nash

DRAWING TITLE:	9 Pin D-Sub Plug, Stamped Contacts	SCALE:	NTS	U.O.M.:	mm [INCHES]
SIZE:	DWG. NO.	DATE:	2/13/08	SHEET:	1 OF 1
REV	79K5015.DWG	REV	B		

X-ON Electronics

Largest Supplier of Electrical and Electronic Components

Click to view similar products for [spc technology manufacturer](#):

Other Similar products are found below :

[2N5884](#) [2N6438](#) [SPC19947](#) [2N5886](#) [SPC19942](#) [SPC19944](#) [MJE15030](#) [SPC15477](#) [SPC15391](#) [2N5320](#)