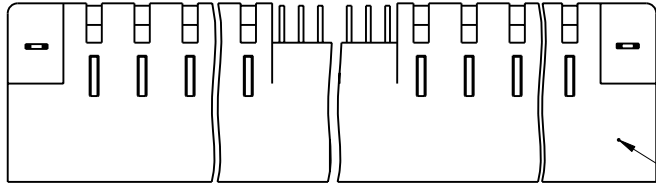


Tous droits strictement réservés. Reproduction ou communication o des liers interalle sous quelque forme que ce soit sans autorisation écrite du propriétaire. Propriete de c F.C.I. Droits de reproduction F.C.I.

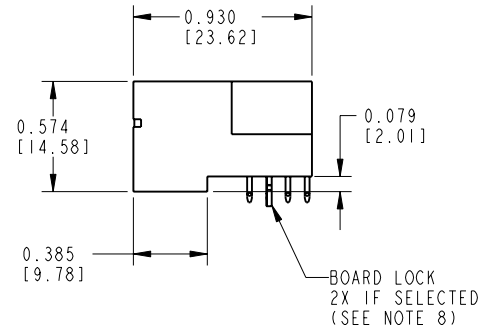
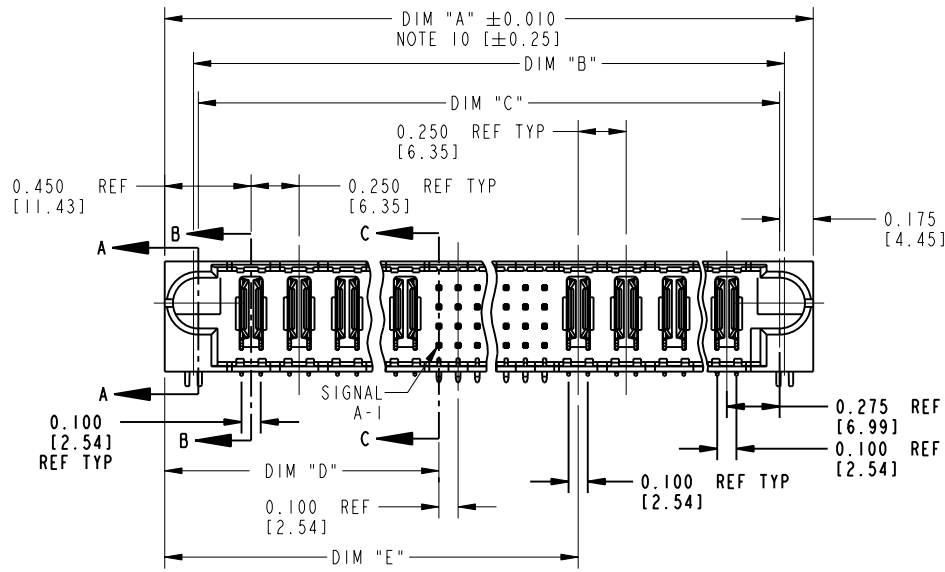
All rights strictly reserved. Reproduction or issue to third parties in any form, whomever is not permitted without written authority from the proprietor. Property of F.C.I. Copyright F.C.I.



|                               |
|-------------------------------|
| PRODUCT NUMBER                |
| 51720- ABBCCCODEF..<br>NOTE ① |
| SEE NOTE 1                    |



SEE NOTE 9



|                          |           |       |          |  |          |                  |   |             |                    |
|--------------------------|-----------|-------|----------|--|----------|------------------|---|-------------|--------------------|
| mat'l code<br>SEE NOTE 2 |           |       |          | tolerances unless<br>otherwise specified |          | CUSTOMER<br>COPY |   | ELECTRONICS |                    |
| ltr                      | ecn no.   | dr    | date     | linear                                   | angles   |                  |   | projection  | www.fciconnect.com |
| J                        | DG05-0132 | SJ    | 05/23/05 | .XXX±.005/.XX±.13                        | 0°±2°    |                  | title<br>RIGHT ANGLE HEADER w/GUIDE PIN<br>POWER / SIGNAL / POWER |             |                    |
| K                        | DG05-0485 | GuoJM | 11/21/05 | .XXX±.0020/.XXX±.051                     | dr       |                  | C. BAROT  | 05-04-99    | product family     |
|                          |           |       |          | engr                                     | J. BROWN | 05-04-99         | PwrBlade  | code        |                    |
|                          |           |       |          | chr                                      | J. BROWN | 05-04-99         | size  | 213         |                    |
|                          |           |       |          | appd                                     | J. BROWN | 05-04-99         | dwg no  | SHEET       |                    |
| sheet                    | revision  | K     | K        | K  |          |                  | A   | 1 OF 3      |                    |
| index                    | sheet     | 1     | 2        | 3  |          |                  |   |             |                    |

form no. 7530-001-103

cage code 22526

Tous droits strictement réservés. Reproduction ou communication o des liers interalle sous quelque forme que ce soit sans autorisation écrite du propriétaire. Propriete de c FCI. Droits de reproduction FCI.


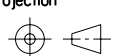
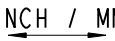
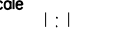
All rights strictly reserved. Reproduction or issue to third parties in any form, whenever is not permitted without written authority from the proprietor. Property of FCI. Copyright FCI.

|                              |         |   |
|------------------------------|---------|---|
| PRODUCT NUMBER               | DIM     | LENGTH FORMULAS (SEE NOTE 10)   |
| 51720- ABBCCDDEF..<br>NOTE ① | DIM "A" | .250 [6.35] x BB + .100 [2.54] x (CCC/4) + .250 [6.35] x DD + .650 [16.51](NOTE 10) |
| SEE NOTE 1                   | DIM "B" | .250 [6.35] x BB + .100 [2.54] x (CCC/4) + .250 [6.35] x DD + .350 [8.89]           |
|                              | DIM "C" | .250 [6.35] x BB + .100 [2.54] x (CCC/4) + .250 [6.35] x DD + .300 [7.62]           |
|                              | DIM "D" | .250 [6.35] x BB + .375 [9.53]  |
|                              | DIM "E" | .250 [6.35] x BB + .100 [2.54] x (CCC/4) + .450 [11.43]                             |
|                              | DIM "F" | .250 [6.35] x BB + .100 [2.54] x (CCC/4) + .250 [6.35] x DD + .680 [17.27]          |
|                              | DIM "G" | .250 [6.35] x BB + .225 [5.72]  |
|                              | DIM "H" | .250 [6.35] x BB + .100 [2.54] x (CCC/4) + .250 [6.35]                              |

CONNECTOR NOTES

- ① PRODUCT NUMBER CODE:  
51720 - A BB CCC DD E F LF  
  - A - BOARD LOCK (REQUIRES .098 + .002, -.001 [2.49 +0.05, -0.03] THRU HOLE IN PCB).
  - BB - MOUNTING FOOT THICKNESS: .220[5.59]
  - CCC - MOUNTING FOOT THICKNESS: .158±.003 [4.01±08] THRU HOLE IN PCB).
  - DD - MOUNTING FOOT THICKNESS: .160[4.06]
  - E - MANUFACTURE'S NAME, P/N, AND DATE CODE TO APPEAR ON THIS SURFACE.
  - F - THE MAXIMUM OVERALL LENGTH (DIM A) OF A PART IS 8.00 [203.2]
  - LF - PRODUCT SPECIFICATION GS-12-149
- ② HOUSING MATERIAL: GLASS FILLED V-O HIGH TEMP THERMO PLASTIC.  
SIGNAL CONTACT MATERIAL: COPPER ALLOY  
POWER CONTACT MATERIAL: COPPER ALLOY
- ③ PLATING OPTION:  
1 = SIGNAL CONTACTS: 50u" / 1.27um Ni UNDER ALL; 30u" / 0.76um Au ON THE CONTACT AREA AND WITH 100u"/2.54um SnPb OR 78u"/2.00um Sn ON PCB INTERFACE  
POWER CONTACTS: 50u" / 1.27um Ni UNDER ALL; WITH 30u" / 76um Au ON CONTACT AREA WITH 100u"/2.54um SnPb OR 78u"/2.00um Sn ON PCB INTERFACE  
3 = SIGNAL CONTACTS: 50u" / 1.27um Ni UNDER ALL; 30u" / 0.76um Au ON THE CONTACT AREA AND WITH 5u"/0.13um Au ONPCB INTERFACE  
POWER CONTACTS: 50u" / 1.27um Ni UNDER ALL; WITH 30u" / 76um Au ON CONTACT AREA WITH 5u"/0.13um Au ON PCB INTERFACE
- ④ LEFT END POWER CONTACTS, 01 TO 20 AVAILABLE.  
MAXIMUM OF 20 POWER CONTACTS PER CONNECTOR.
- ⑤ SIGNAL CONTACTS, 004 TO 148 AVAILABLE.
- 6. RIGHT END POWER CONTACTS, 01 TO 20 AVAILABLE.  
MAXIMUM OF 20 POWER CONTACTS PER CONNECTOR.
- 7. TAIL OPTIONS:  
A = .135 [3.43] SOLDER TO BOARD
- 8. RETENTION TO PCB OPTIONS:  
A = BOARD LOCK (REQUIRES .098 + .002, -.001 [2.49 +0.05, -0.03] THRU HOLE IN PCB).
- 9. MANUFACTURE'S NAME, P/N, AND DATE CODE TO APPEAR ON THIS SURFACE.
- 10. THE MAXIMUM OVERALL LENGTH (DIM A) OF A PART IS 8.00 [203.2]
- 11. PRODUCT SPECIFICATION GS-12-149
- 12. REFERENCE 51697 FOR SPECIALS WORKSHEET.
- PCB NOTES:  
13. ALL DIMENSIONS ARE BASIC UNLESS OTHERWISE SPECIFIED.  
14. ALL THROUGH HOLES ARE LOCATED WITH A TRUE POSITION OF .004[0.10]  
15. ALL HOLE DIAMETERS ARE FINISHED HOLE SIZE.  
16. Ø0.0453 ±.001 [1.151 ±0.02] DRILLED HOLES PLATED WITH 0.0003 [0.007] MIN SnPb OVER 0.001 [1.03] TO .003 [0.08] PLATING TO ACHIEVE A .040±.003 [1.02±08] HOLE.

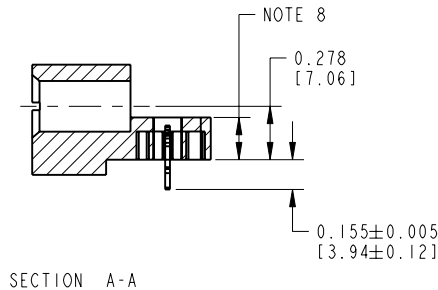
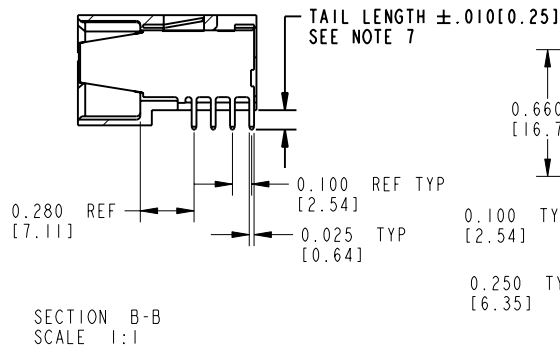
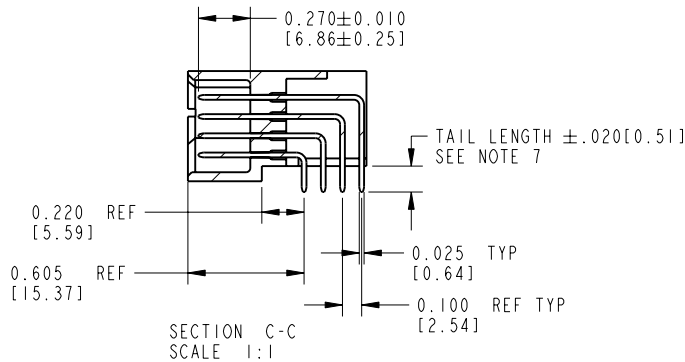
THIS FILE WAS ORIGINALLY CREATED IN THE PRO ENGINEER ENVIRONMENT AND ANY FUTURE REVISIONS TO THIS FILE MUST BE MADE IN THE PRO ENGINEER ENVIRONMENT

|             |                |    |      |                                       |   |   |  |
|-------------|----------------|----|------|---------------------------------------|---|---|--|
| mat'l code  |                |    |      | tolerances unless otherwise specified |   | CUSTOMER COPY   |  <b>ELECTRONICS</b><br>www.fciconnect.com |
| ltr         | ecr no.        | dr | date | linear                                | projection  | title   |  |
| K           |                |    |      | .XX±.01/.X±.3                         |  | RIGHT ANGLE HEADER w/GUIDE PIN POWER / SIGNAL / POWER |  |
|             |                |    |      | .XXX±.005/.XX±.13                     |  | product family  |  |
|             |                |    |      | .XXX±.0020/.XXX±.051                  |   | PwrBlade  | code   |
|             |                |    |      | angles                                |  | size  | 213  |
|             |                |    |      | 0°±2°                                 |   | A   | 51720  |
|             |                |    |      | dr                                    | C. BAROT  | 05-04-99  |  |
|             |                |    |      | engr                                  | J. BROWN  | 05-04-99  |  |
|             |                |    |      | chr                                   | J. BROWN  | 05-04-99  |  |
|             |                |    |      | appd                                  | J. BROWN  | 05-04-99  |  |
| sheet index | revision sheet |    |      |                                       |   |   |  |

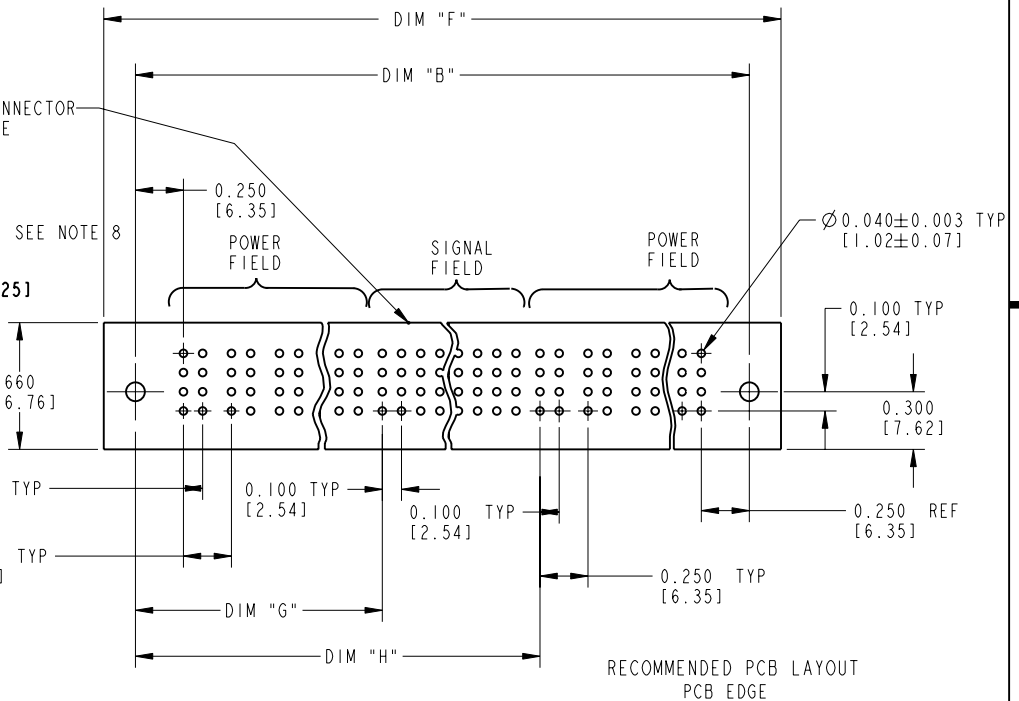
Tous droits strictement réservés. Reproduction ou communication o des liers interdite sous quelque forme que ce soit sans autorisation écrite du propriétaire. Propriete de c FCI. Droits de reproduction FCI.

All rights strictly reserved. Reproduction or issue to third parties in any form, whatever is not permitted without written authority from the proprietor. Property of FCI. Copyright FCI.

PRODUCT NUMBER  
51720- ABBCCDDEF...  
NOTE ①



MECHANICAL CONNECTOR STAY-AWAY ZONE



|             |         |                |      |                                       |                       |               |  |  |  |
|-------------|---------|----------------|------|---------------------------------------|-----------------------|---------------|--|--|--|
| mat'l code  |         |                |      | tolerances unless otherwise specified |                       | CUSTOMER COPY |  | <b>ELECTRONICS</b><br>www.fciconnect.com                 |  |
| lfr         | ecn no. | dr             | date | linear                                | .XX±.01/.X±.3         | projection    |  | title  |  |
| K           |         |                |      | angles                                | .XXX±.005/.XX±.13     |               |  | RIGHT ANGLE HEADER w/GUIDE PIN<br>POWER / SIGNAL / POWER |  |
|             |         |                |      | dr                                    | .XXXX±.0020/.XXX±.051 | INCH / MM     |  | product family   |  |
|             |         |                |      | engr                                  | 0°±2°                 | scale 1:1     |  | PwrBlade   |  |
|             |         |                |      | chr                                   |                       |               |  | code   |  |
|             |         |                |      | appd                                  |                       |               |  | 213  |  |
| sheet index |         | revision sheet |      |                                       |                       |               |  | size   |  |
|             |         |                |      |                                       |                       |               |  | dwg no   |  |
|             |         |                |      |                                       |                       |               |  | 51720  |  |
|             |         |                |      |                                       |                       |               |  | SHEET 3 OF 3   |  |

form no. 7530-001-103

code code 22526

PDM: Rev:K

STATUS:Released

Printed: Oct 07, 2006

## X-ON Electronics

Largest Supplier of Electrical and Electronic Components

*Click to view similar products for [Power to the Board](#) category:*

*Click to view products by [Amphenol](#) manufacturer:*

Other Similar products are found below :

[10131318-08512GRLF](#) [6450171-4](#) [6450552-7](#) [6600323-8](#) [6643429-1](#) [6646040-2](#) [6651939-1](#) [6766604-1](#) [120959-1](#) [1393557-2](#) [1393532-2](#)  
[1393532-3](#) [1393532-4](#) [1393557-1](#) [1600812-5](#) [1-6450861-2](#) [1645595-1](#) [1743490-1](#) [1744132-7](#) [1761122-1](#) [1766169-1](#) [1766250-1](#) [18362](#)  
[1892109-1](#) [1-967627-6](#) [2226808-1](#) [2-6450860-5](#) [2-6450860-6](#) [2-6450870-0](#) [93003-0502](#) [953552-1](#) [1-6450161-4](#) [1-6450850-6](#) [1645526-2](#) [1-](#)  
[6600130-0](#) [1743419-1](#) [1766150-1](#) [2005243-2](#) [211110-1](#) [2-6600130-2](#) [TE34-12-16P-F0](#) [51700-10201602AALF](#) [5-6450830-6](#) [5646956-4](#)  
[36662-0005](#) [40585-3000](#) [4-6450830-9](#) [4-6600333-3](#) [51142-0214](#) [10125416-4050LF](#)